

LITHIUM-ION ENERGY STORAGE BATTERY

PRINCIPLE



How does a lithium battery work? When the battery is charging, the lithium ions flow from the cathode to the anode, and the electrons move from the anode to the cathode. As long as lithium ions are making the trek from one electrode to another, there is a constant flow of electrons. This provides the energy to keep your device running.



Why do lithium ion batteries need to be charged? Simply storing lithium-ion batteries in the charged state also reduces their capacity (the amount of cyclable Li^+) and increases the cell resistance (primarily due to the continuous growth of the solid electrolyte interface on the anode).



Are lithium ion batteries good for stationary energy storage? As of 2023 [update], LiFePO_4 is the primary candidate for large-scale use of lithium-ion batteries for stationary energy storage (rather than electric vehicles) due to its low cost, excellent safety, and high cycle durability. For example, Sony Fortelion batteries have retained 74% of their capacity after 8000 cycles with 100% discharge. [99]



What is a lithium ion battery? "Liion" redirects here. Not to be confused with Lion. A lithium-ion or Li-ion battery is a type of rechargeable battery that uses the reversible intercalation of Li^+ ions into electronically conducting solids to store energy.



How does recharging a lithium ion battery work? Here is the full reaction (left to right = discharging, right to left = charging): $\text{LiC}_6 + \text{CoO}_2 \rightleftharpoons \text{C}_6 + \text{LiCoO}_2$ How does recharging a lithium-ion battery work? When the lithium-ion battery in your mobile phone is powering it, positively charged lithium ions (Li^+) move from the negative anode to the positive cathode.

LITHIUM-ION ENERGY STORAGE BATTERY PRINCIPLE



Why is lithium ion a good battery? The lithium ions are small enough to be able to move through a micro-permeable separator between the anode and cathode. In part because of lithium's small atomic weight and radius (third only to hydrogen and helium), Li-ion batteries are capable of having a very high voltage and charge storage per unit mass and unit volume.



OverviewHistoryDesignFormatsUsesPerformanceLifespanSafety



The current energy density of sodium-ion batteries is 120-150wh/kg, which is lower than the current lithium battery energy density of 150-180wh/kg, and there is a certain gap between the energy density of ternary lithium batteries of 200-250wh/kg. Due to the energy density gap with lithium batteries, sodium batteries can only be used in low



Discover the principles and importance of battery energy storage, including how it works, its advantages, types, and why lithium-ion is the first choice. and why lithium-ion is the first choice. Skip to content. Be Our Distributor. Lithium Battery Menu Toggle. Deep Cycle Battery Menu Toggle. 12V Lithium Batteries Home / blog / Battery



Lithium-ion Battery. A lithium-ion battery, also known as the Li-ion battery, is a type of secondary (rechargeable) battery composed of cells in which lithium ions move from the anode through an electrolyte to the cathode during discharge and back when charging.. The cathode is made of a composite material (an intercalated lithium compound) and defines the name of the Li-ion ???

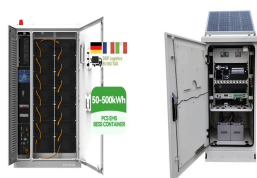
LITHIUM-ION ENERGY STORAGE BATTERY PRINCIPLE



Parts of a lithium-ion battery ((C) 2019 Let's Talk Science based on an image by ser_igor via iStockphoto).. Just like alkaline dry cell batteries, such as the ones used in clocks and TV remote controls, lithium-ion batteries provide power through the movement of ions. Lithium is extremely reactive in its elemental form. That's why lithium-ion batteries don't use elemental ???



Flywheel energy storage technology is an emerging energy storage technology that stores kinetic energy through a rotor that rotates at high speed in a low-friction environment, and belongs to mechanical energy storage technology. It has the characteristics of high power, fast response, high frequency and long life, and is suitable for transportation, emergency power supply, ???



Sony launched the first Lithium-ion batteries in the market in 1990. Lithium-ion batteries show several benefits, including a well energy density, long cycle life etc [1]. Lithium-ion batteries have been employed in various applications, for instance, electric/hybrid electric vehicles, numerous electronics, a lot of energy storage systems etc.

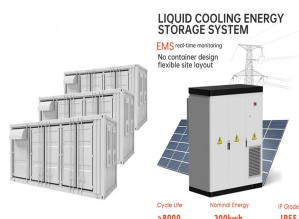


Lithium-ion batteries are widely utilized in various fields, including aerospace, new energy vehicles, energy storage systems, medical equipment, and security equipment, due to their high energy

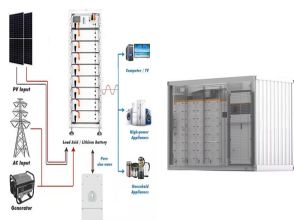


Download scientific diagram | The principle of the lithium-ion battery (LiB) showing the intercalation of lithium-ions (yellow spheres) into the anode and cathode matrices upon charge and

LITHIUM-ION ENERGY STORAGE BATTERY PRINCIPLE



In the electrical energy transformation process, the grid-level energy storage system plays an essential role in balancing power generation and utilization. Batteries have considerable potential for application to grid-level energy storage systems because of their rapid response, modularization, and flexible installation. Among several battery technologies, lithium ???



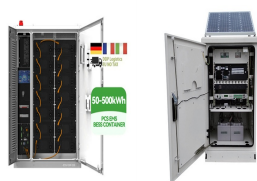
Lithium iron phosphate (LFP) and lithium nickel manganese cobalt oxide (NMC) are the two most common and popular Li-ion battery chemistries for battery energy applications. Li-ion batteries are small, lightweight and have a high capacity and energy density, requiring minimal maintenance and provide a long lifespan.



Lithium-ion batteries are the state-of-the-art electrochemical energy storage technology for mobile electronic devices and electric vehicles. Accordingly, they have attracted ???



Lithium-ion batteries are pivotal in powering modern devices, utilizing lithium ions moving across electrodes to store energy efficiently. and is the amount of energy the battery can store with respect to its mass. Power density is measured in watts per kilogram (W/kg) and is the amount of power that can be generated by the battery with



11. The voltage level of a lithium-ion battery does not drop and is maintained constantly throughout the use. 12. The capacity of a lithium-ion battery is approximately 25-50% more than the lead-acid battery. 13. They require low maintenance. 14. Lithium-ion batteries are non-hazardous as they do not emit any toxic gas. Disadvantages of Lithium

LITHIUM-ION ENERGY STORAGE BATTERY PRINCIPLE



The lithium-ion battery (LIB) is a rechargeable battery used for a variety in applications for large-scale energy storage systems. The LIB can also In principle, it is limited to around 1.5 V, the voltage at which water . of the electrolyte begins to dissociate by ???



However it has a lower energy density compared to lithium-ion batteries. Its working principle and cell construction are similar to those of lithium-ion battery (LIB) types, but it replaces lithium with sodium as the intercalating ion. Some sodium based batteries can also operate safely at high temperatures (sodium???sulfur battery).



In modern society, lithium-ion batteries (LIBs) have been regarded as an essential energy storage technology. Rechargeable LIBs power most portable electronic devices and are increasingly in demand for electric vehicle and grid storage applications [1,2,3].Therefore, improving the energy density of the cathode materials is the main goal of LIB research.



Illustration of first full cell of Carbon/LiCoO₂ coupled Li-ion battery patterned by Yohsino et al., with 1-positive electrode, 2-negative electrode, 3-current collecting rods, 4-SUS nets, 5



A rise in interest in sodium-ion batteries was noticed in the year 2000, partly due to the rising demand for and price of raw materials used to produce lithium-ion batteries. A potassium-ion battery is similar to lithium-ion battery but uses potassium ions for charge transfer. A chemist Ali Eftekhari invented it in the year of 2004.

LITHIUM-ION ENERGY STORAGE BATTERY PRINCIPLE



Li-ion batteries are highly advanced as compared to other commercial rechargeable batteries, in terms of gravimetric and volumetric energy. Figure 2 compares the energy densities of different commercial rechargeable ???



"Compared to traditional lithium-ion, [lithium iron phosphate] is environmentally friendly, and very stable," Niu says. "But it's important for this material to be well understood." While the discovery of the SSZ was made in LiFePO_4 , Li says, "The same principle may apply to other electrode materials. People are looking for high



A hybrid energy-storage system (HESS), which fully utilizes the durability of energy-oriented storage devices and the rapidity of power-oriented storage devices, is an efficient solution to managing energy and power legitimately and symmetrically. Hence, research into these systems is drawing more attention with substantial findings. A battery???supercapacitor ???



A lithium-ion (Li-ion) battery is a type of rechargeable battery that uses lithium ions as the main component of its electrochemical cells. It is characterised by high energy density, fast charge, long cycle life, and wide temperature range operation. Lithium-ion batteries have been credited for revolutionising communications and transportation, enabling the rise of super-slim ???



Basic Research Needs for Next Generation Electrical Energy Storage; Materials Project and Electrolyte Genome; The Hidden Architecture of Energy Storage; Peering into Batteries: X-Rays Reveal Lithium-Ion's Mysteries; Charging Up the Development of Lithium-Ion Batteries; Science Highlight: A Cousin of Table Salt Could Make Energy Storage Faster

LITHIUM-ION ENERGY STORAGE BATTERY PRINCIPLE



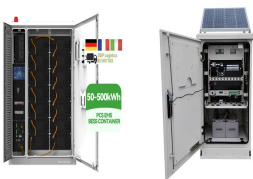
A. Physical principles A Lithium Ion (Li-Ion) Battery System is an energy storage system based on electrochemical charge/discharge reactions that occur between a positive electrode (cathode) that contains some lithiated metal oxide and a negative Energy Storage Technology Descriptions - EASE - European Association for Storage of Energy



Batteries are valued as devices that store chemical energy and convert it into electrical energy. Unfortunately, the standard description of electrochemistry does not explain specifically where or how the energy is stored in a battery; explanations just in terms of electron transfer are easily shown to be at odds with experimental observations. Importantly, the Gibbs energy reduction ???



Lithium-ion battery (LIB) is one of rechargeable battery types in which lithium ions move from the negative electrode (anode) to the positive electrode (cathode) during discharge, and back when charging. It is the most popular choice for consumer electronics applications mainly due to high-energy density, longer cycle and shelf life, and no memory effect.



A Lithium-Ion Battery Charging (Image Let's Talk Science) Lithium-Ion Batteries Are Ideal for Mobile Applications. Battery size and weight are important for mobile devices like smartphones and wearables. Lithium-ion technology currently has the greatest charge density (stored energy) per weight and volume: Lithium is the most electro-positive



The most commonly used electrode materials in lithium organic batteries (LOBs) are redox-active organic materials, which have the advantages of low cost, environmental safety, and adjustable structures. Although the use of organic materials as electrodes in LOBs has been reported, these materials have not attained the same recognition as inorganic electrode materials, mainly due ???

LITHIUM-ION ENERGY STORAGE BATTERY

PRINCIPLE



How lithium-ion batteries work. Like any other battery, a rechargeable lithium-ion battery is made of one or more power-generating compartments called cells. Each cell has essentially three components: a positive electrode (connected to the battery's positive or + terminal), a negative electrode (connected to the negative or - terminal), and a chemical electrolyte.