

# LITHIUM IRON ENERGY STORAGE BATTERY

## CAR STARTING



114KWh ESS



Are lithium iron phosphate batteries the new normal for electric cars? See all posts by Steve Hanley Lithium iron phosphate batteries may be the new normal for electric cars, which could lower EV prices and ease consumer fears about the cost of replacing a battery.

114KWh ESS



Are lithium-ion batteries the future of electric cars & trucks? Long live the lithium iron battery! Those words signal a revolutionary change in battery technology, one that will cause a dramatic increase in the demand for electric cars and trucks. Over the past decade, zillions of hours and billions of dollars have been invested in figuring out how to make solid-state lithium-ion batteries.

114KWh ESS



What are lithium iron phosphate batteries? Lithium iron phosphate batteries are a type of rechargeable battery made with lithium-iron-phosphate cathodes. Since the full name is a bit of a mouthful, they're commonly abbreviated to LFP batteries (the 'F' is from its scientific name: Lithium ferrophosphate) or  $\text{LiFePO}_4$ .

114KWh ESS



Will electric cars be made out of lithium ion batteries? The German auto giant also agreed to set up a joint venture with the company to mass-produce the batteries and says they'll be in its electric cars and trucks on the road by 2025. In a conventional lithium-ion battery, one of the two electrodes, the anode, is made mostly from graphite.

114KWh ESS



Are lithium iron phosphate batteries safe? But taken overall, lithium iron phosphate battery lifespan remains remarkable compared to its EV alternatives. While studies show that EVs are at least as safe as conventional vehicles, lithium iron phosphate batteries may make them even safer.

# LITHIUM IRON ENERGY STORAGE BATTERY

## CAR STARTING

114KWh ESS



Why are lithium batteries not good for starting? Charging them in sub-freezing temperatures can cause lithium plating, a process that will cause a loss of battery capacity and also cause short circuits, causing permanent damage to the battery. Why Aren't Lithium Batteries Good for Starting? The issue isn't necessarily with the power output of the batteries.

114KWh ESS



Car Start-Stop Lithium Battery GROUP 24 12V 60AH Car Battery with 1100CCA Litime 12V 100Ah TM Low-Temp Protection LiFePO4 Battery Built-in 100A BMS, Group 31 Deep Cycle, Lithium Iron Phosphate Battery Perfect for Trolling Motors, Yacht, Marine, Boat, RV, Home Energy 200. \$239.99 \$ 239. 99. 7:35 . Marine, Camping, Home Energy Storage (2



CARKU-Lithium battery Solutions. CARKU boasts a top-tier research team and 13 years of experience in the battery industry. From the introduction of the world's first lithium battery multi-functional Automotive Jump Starter to becoming a leader in LIFE BMS Portable Power Station, and the groundbreaking release of Heavy Truck Starting & Energy Storage Battery, we have ???



Energy storage through Lithium-ion Batteries (LiBs) is acquiring growing presence both in commercially available equipment and research activities. The LiB is a Lithium iron phosphate battery of 5.0 kW manufactured by BYD. The data provided by the in-built BMU is transmitted to an in-house IoT server and displayed through a user interface



Table 3: Characteristics of Lithium Cobalt Oxide. Lithium Manganese Oxide ( $\text{LiMn}_2\text{O}_4$ ) ??? LMO. Li-ion with manganese spinel was first published in the Materials Research Bulletin in 1983. In 1996, Moli Energy commercialized a Li-ion cell with lithium manganese oxide as cathode material.

# LITHIUM IRON ENERGY STORAGE BATTERY CAR STARTING



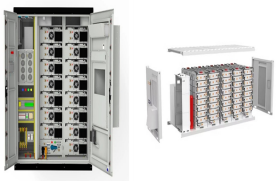
This paper presents an overview of the research for improving lithium-ion battery energy storage density, safety, and renewable energy conversion efficiency. the theoretical energy density of lithium iron phosphate batteries is lower than that of ternary lithium-ion batteries, and the installed capacity of lithium iron phosphate batteries



LiFePO<sub>4</sub> batteries charge by applying a constant voltage to the battery, allowing lithium ions to move from the cathode to the anode and increasing the battery's energy storage capacity. During discharge, the stored energy is released, and the lithium ions move from the anode to the cathode, creating an electric current.



The cathode of a lithium iron battery is typically made of a lithium iron phosphate material, which provides stability, safety, and high energy density. The anode is typically made of carbon, while the electrolyte allows the movement of lithium ions between the cathode and anode during charging and discharging cycles.



Buy NERMAK 12V 100Ah Lithium LiFePO<sub>4</sub> Deep Cycle Battery, 4000+ Cycles Lithium Iron Phosphate Rechargeable Battery for Solar, RV, Marine, Home Energy Storage, Off-Grid Applications Built-in 100A BMS: (AGM/Gel/SLA..) Car Battery Charger,Trickle Charger, Maintainer/deep Cycle Charger,12V/20A and 24V/10A,for Boat,Motorcycle,Lawn Mower,Golf ???



The applications of lithium-ion batteries (LIBs) have been widespread including electric vehicles (EVs) and hybridelectric vehicles (HEVs) because of their lucrative characteristics such as high energy density, long cycle life, environmental friendliness, high power density, low self-discharge, and the absence of memory effect [[1], [2], [3]] addition, other features like ???

# LITHIUM IRON ENERGY STORAGE BATTERY

## CAR STARTING



Power battery packs; Lithium iron phosphate batteries (LiFePO4 batteries) Lithium battery cells; Energy storage battery packs; Gotion was founded in May 2006, and it manufactures lithium-ion power batteries and their components from scratch. Ltd. is actively working on starting a mass production unit for 4680 and 4695 batteries for next



Energy Storage Battery Menu Toggle. Server Rack Battery; Powerwall Battery; All-in-one Energy Storage System; Application Menu Toggle. content. Starting Battery Truck Battery Car start Batteries Motorcycle Starter Battery. Energy Storage System C& I ESS also known as the lithium iron phosphate battery, consists of a cathode made of lithium



This document outlines a U.S. lithium-based battery blueprint, developed by the . Federal Consortium for Advanced Batteries (FCAB), to guide investments in . the domestic lithium-battery manufacturing value chain that will bring equitable . clean-energy manufacturing jobs to America. FCAB brings together federal agencies interested



For businesses in sectors like electric vehicles (EVs) and energy storage systems, it is crucial to choose suitable battery technology. Two of these are lithium iron phosphate (LFP) and nickel manganese cobalt (NMC) batteries.



10 Best Lithium Car Battery 2024 ??? High-Quality Picks for Storage Energy. By. Azher89 - December 12, 2022. The PC925 delivers high starting power to meet vehicle demand. This battery is specially designed to cope up with the changes in the car industry. While buying a lithium car battery, you must ensure that the battery has at least

# LITHIUM IRON ENERGY STORAGE BATTERY

## CAR STARTING



A lithium-ion starting battery is a type of battery that is specifically designed to provide the initial power needed to start a vehicle's engine. Unlike traditional lead-acid batteries, which use lead plates and acid electrolytes to generate electricity, lithium-ion batteries use lithium ions to store and release energy.



fully charged. The state of charge influences a battery's ability to provide energy or ancillary services to the grid at any given time. Round-trip efficiency, measured as a percentage, is a ratio of the energy charged to the battery to the energy discharged from the battery. It can represent the total DC-DC or AC-AC efficiency of



Buy 12V 80Ah LiFePO4 Start-Stop Battery, CCA1300 Car Battery, Automobile Starter Batteries Lithium Iron Phosphate Battery Deep Cycle Grade A Cell Batteries (Left +, Right -): Household Supplies - Amazon FREE DELIVERY possible on eligible purchases higher energy density and lower weight, which makes the batteries good enough at high



Wind turbine battery; Fan battery; Energy storage solutions; Large battery storage; Digital battery Menu Toggle. There are a variety of starter batteries. These different batteries provide different powers. Lithium starting battery is commonly seen in modern vehicles. Some other starter batteries are flooded lead-acid batteries, silver



Key Challenges for Grid-Scale Lithium-Ion Battery Energy Storage. Yimeng Huang, Yimeng Huang. Department of Materials Science and Engineering, Massachusetts Institute of Technology, Cambridge, MA, 02139 USA starting from now. Also note that "8 h of energy" is a colloquial term to show the scale in contrast to primary energy use, but if

# LITHIUM IRON ENERGY STORAGE BATTERY

## CAR STARTING



ENERGY STORAGE DEEP CYCLE/ SOLAR. LEARN MORE.

CHARGERS & ACCESSORIES USEFUL ADD-ONS Antigravity

H6/Group-48 Lithium Car Battery. Rated 5.00 out of 5 \$ 719.99 ??? \$

1,049.99. Select options. Add to wishlist. Compare. Quick View.

Antigravity ATZ7 RE-START Lithium Battery \$ 144.99. Add to cart. Add to wishlist. Compare. Quick View. Antigravity



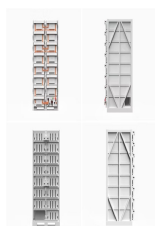
If your reading this; you already know that the primitive lead acid battery . is going the way of the horse and buggy. Energy storage in a lithium battery has advanced to the point of being very safe; (safer than carrying around flammable gasoline !) very lightweight ; 1/4th the weight of a lead battery, longer life span,



In the midst of the soaring demand for EVs and renewable power and an explosion in battery development, one thing is certain: batteries will play a key role in the transition to renewable energy.



Other energy storage technologies???such as thermal batteries, which store energy as heat, or hydroelectric storage, which uses water pumped uphill to run a turbine???are also gaining interest, as engineers race to find a form of storage that can be built alongside wind and solar power, in a power-plus-storage system that still costs less than



Buy Litime 12V 200Ah LiFePO4 Lithium Battery with 2560Wh Energy Max. 1280W Load Power Built-in 100A BMS,10 Years Lifetime 4000+ Cycles, Perfect for RV Solar Energy Storage Marine Trolling Motor: Batteries - Amazon FREE DELIVERY possible on eligible purchases Please do not use this battery as a car battery, starting battery, or golf cart



# LITHIUM IRON ENERGY STORAGE BATTERY

## CAR STARTING

---



Ultra-low temperature starting with lithium iron phosphate car battery. CARKU 12V Lithium Iron Phosphate Battery for Heavy-Duty Trucks. Carku Heavy Truck Starting & Energy Storage Battery independently powers your truck's air conditioning system. With a full charge, it provides over 12 hours of continuous power, creating a comfortable