

# LUXEMBOURG RTC ENERGY



How to manage gas and electricity costs in Luxembourg? The cost of gas and electricity in Luxembourg constitutes one of the primary fixed expenses that households and businesses must manage monthly. Understanding the various providers and securing the best prices are essential steps for effectively managing these costs.



Does Luxembourg need more wind power? Luxembourg's wind turbines produced 314 gigawatt hours of electricity in 2021. However, there is still much potential for additional capacity throughout the country. Luxembourg wants to use more renewable energy in the future, and wind power is to play a more important role alongside solar energy.



How do electricity and gas providers compare in Luxembourg? There is a wide variety of electricity and gas providers in Luxembourg, making comparison a complex task. Many factors influence the decision beyond the price per kilowatt-hour. For instance, the final price comprises both a fixed part and a variable part.



Does Sudstrom supply electricity in Luxembourg? The national liberalization law allowed Sudstrom to supply clients outside its electricity network. As a result, Sudstrom now supplies at least one client in each of Luxembourg's twelve cantons. Enovos is a leading energy and gas company in Luxembourg with a history dating back to 1928, when Cegedel was founded to distribute electricity.



How many wind turbines are there in Luxembourg? Currently, there are 62 wind turbines in Luxembourg, with 17 currently awaiting approval. However, there is much to be done - especially given that 10 percent less electricity was produced in 2021 than in 2020 due to, among other things, bad weather conditions and old plants that had to be taken out of operation.

# LUXEMBOURG RTC ENERGY



(1) RACKS OUTDOOR CABINET  
 (2) PDU  
 (3) OUTDOOR ENERGY STORAGE CABINET  
 (4) OUTDOOR BATTERY CABINET

What is the role of support and subsidies in Luxembourg? In Luxembourg, support and subsidies play a crucial role in ensuring equitable access to essential utilities like gas and electricity. These initiatives aim to alleviate energy costs for vulnerable households, promote energy efficiency measures, and encourage the adoption of renewable energy sources.



(1) RACKS OUTDOOR CABINET  
 (2) PDU  
 (3) OUTDOOR ENERGY STORAGE CABINET  
 (4) OUTDOOR BATTERY CABINET

Luxembourg is a forerunner in Europe when it comes to the use of renewable energy. 65% of the electricity supplied to homes and businesses comes from renewable energies, compared with 35% for Europe as a whole. 27% comes from fossil fuels, compared with 40% in Europe. Only 7% of electricity supplied comes from nuclear sources, compared with 35% for the rest of Europe.



The visualizations for "Allianz Renewable Energy Partners Luxembourg VI SA, Luxembourg" are provided by North Data and may be reused under the terms of the Creative Commons CC-BY license. Countries and Sources Coverage Help center Blog Newsletter Jobs German Website. Contact About



1. Renewable energy, particularly hydropower and biomass, is playing an increasingly important role in Luxembourg's energy profile. This shift aligns with global trends towards cleaner, more sustainable energy solutions. Renewable energy expansion. The government of Luxembourg has implemented policies to foster the growth of renewable energy.



All property transactions in Luxembourg require the production of an Energy Performance Certificate (Certificat de Performance Energetique). The CPE or passeport energetique attests to the energy quality of a property. When selling or renting a property, the owner must provide the buyer with an energy passport proving its energy performance.

# LUXEMBOURG RTC ENERGY



Luxembourg's wind turbines produced 314 gigawatt hours of electricity in 2021. However, there is still much potential for additional capacity throughout the country. Luxembourg wants to use



Energy Balance: total and per energy. Luxembourg Energy Prices: In addition to the analysis provided on the report we also provided a data set which includes historical details on the Luxembourg energy prices for the follow items: price of premium gasoline (taxes incl.), price of diesel (taxes incl.), price of electricity in industry (taxes



Le Luxembourg est en train d'accroître sa capacité de production d'énergie verte. L'énergie éolienne joue un rôle clé à cet égard. Luxembourg is currently ramping up its capacity to produce green energy. Wind power plays a key part in this. Several new wind parks are in the process of being planned, authorised or constructed, in



21 . The a?!350 million, 48-kilometre high-voltage power line from Aach to Bertrange is set for completion in 2029, aiming to upgrade Luxembourg's electricity infrastructure. The route of the new 48-kilometre 380 kV extra-high a?]



L'électricité que vous produisez sert à fournir les consommateurs au Luxembourg. Energy Revolt apporte toute son expertise, de la production à la consommation. Contactez-nous 467. Producteurs partenaires. 10182. Kilowatts (kW) Photovoltaïques. Consommation annuelle moyenne de + 2683 habitations



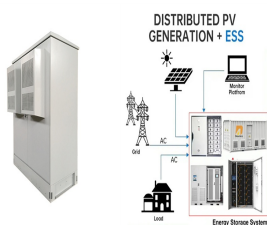
Nos offres au Luxembourg Découvrez notre offre mobilité électrique pour les professionnels ! Je découvre ! La taxe CO2 change Plus d'infos ! Play. Pause!!! MAZOUT !!! Fin de l'aide de l'Etat (150a?!/m3 TTC) sur le mazout de chauffage le 31/12/24 : n'attendez pas qu'il soit trop tard pour

# LUXEMBOURG RTC ENERGY

---

faire le plein ! Communiqué de presse

# LUXEMBOURG RTC ENERGY



Les offres tarifaires des fournisseurs d'électricité au Luxembourg. La plupart des fournisseurs proposent différentes options tarifaires : Tarif de base : avec prix unique du kWh, quelle que soit l'heure Tarif bi-horaire : des prix différents pour a?|



Energy renovation: the "Mamerhaff" is a remarkable and awarded exampleThe " Mamerhaff ", a family project, is about the transformation of the grandparents" farm into two dwellings and a centre for alternative medicine and family meetings.The architectural reinterpretation of the building goes hand in hand with its functional and energy optimisation.



The object of the Societe is: 1 ? the production, purchase, transmission, distribution and marketing of any form of energy, such as electricity, gas, heat, steam or any other forms of energy assimilated or assimilable ("Energy"); (2) the advice and provision of services in all its forms in the field of Energy and Telecommunications, for public and private needs; (3) the development of



Total energy consumption decreased by 12% in 2022 to 3.2 Mtoe (-9% at normal climate), after a 6% rebound in 2021 and a 13.5% drop in 2020. Previously, it decreased by 1.6%/year from 2005 to 2016 and increased by 2.5%/year between 2016 and 2019. Graph: CONSUMPTION TRENDS BY ENERGY SOURCE (Mtoe) Interactive Chart Luxembourg Total Energy Consumption



At the same time, Luxembourg is exploring opportunities to participate in solar power projects in Southern Europe and offshore wind farms in the North Sea. Minister of Energy Lex Delles emphasised that hydrogen is still a?|

# LUXEMBOURG RTC ENERGY



The RTC is the leading coalition for organizations committed to scaling up renewable heating and cooling at their facilities and cutting carbon emissions. About. Energy used for heating and cooling comprises approximately 50 a?|



According to the Luxembourg Regulatory Institute (ILR), the electricity mix sold by suppliers in Luxembourg is composed of 7% nuclear energy, 27% fossil energy, and 65% renewable energy. The ILR calculates the environmental impact and CO2 emissions on the basis of the national electricity mix. CO2 emission certificates, which are traded



Regarding the share of renewable energy in gross final energy consumption, the objective is to reach 25% by 2030 through a constant deployment of wind, solar and heat pumps in Luxembourg. For the energy efficiency dimension, the ambition is to reach a rate of 40 to 44% by 2030, by moving away from fossil fuels in new construction, by increasing



2 . Luxembourg is exploring the potential of Vehicle-to-Grid (V2G) and Vehicle-to-Home (V2H) technologies that can increase the use of renewable energy and reduce loads on the a?|



Just under 17% of the electricity consumed in Luxembourg comes from renewable energies, representing a remarkable rise from just a few years ago. (IRL) reveals a surge in photovoltaic energy production from solar panels in 2022, with an increase of over 50%. Total electricity consumption decreased by 3%, while gas dropped by 21%.



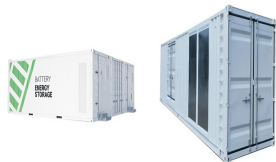
The bank will continue to actively support the region's push to tap new opportunities in clean energy sources, RTC power, energy efficiency and advanced metering technologies" said Vishwanathan. "DBS is excited to be part of the evolutionary journey towards hybrid renewable power

# LUXEMBOURG RTC ENERGY

---

systems and energy efficiency, in line with our commitment to become  
"The Best Bank a?|

# LUXEMBOURG RTC ENERGY



Valued at \$1 billion, it represents the single-largest project finance facility for single Indian renewable energy project. 5 "RTC projects are important for India because power demand is accelerating very quickly," says Kailash Vaswani, Head of Corporate Finance, ReNew Power. "Renewable energy is the cheapest form of new energy in the



Zeimet explained that wind and solar power dominate Luxembourg's renewable energy landscape, with hydropower and biogas playing smaller roles. Hydropower contributes 6% of the country's renewable energy production, biogas 4%, solar power 23%, and wind power 39%.



Did you know Luxembourg was among the EU countries to overachieve their 2020 renewable energy consumption target?. In January 2008, the EU committee published 20-20 by 2020 proposals regarding climate safety a?|



On Wednesday 17 July 2024, Luxembourg's Minister of the Environment, Climate and Biodiversity, Serge Wilmes, and the Minister of the Economy, SMEs, Energy and Tourism, Lex Delles, presented the final version of the update of the National Integrated Energy and Climate Plan (PNEC) with the main changes compared to the draft adopted in July 2023.



View Luxembourg's Luxembourg LU: Energy Use: Kg of Oil Equivalent per 1000 PPP GDP: 2011 Price from 1990 to 2015 in the chart: max 1y 5y 10y. Apply. max 1y 5y 10y. Apply Luxembourg LU: Energy Use: Kg of Oil Equivalent per Capita. 1960 - 2015 | Yearly | kg | World Bank. LU: Energy Use: Kg of Oil Equivalent per Capita data was reported at 6,548.



Radiance Energy Holding Sarl, Luxembourg, RCS B151586: Gewinn, Bilanzsumme, Steuern, Umsatz, Netzwerk, Wirtschaftsinfos. L-2320 Luxembourg. Strassen, Luxembourg Weitere Informationen 64.20 Beteiligungsgesellschaften Finanzielle Entwicklung Umsatz. Umsatz.

# LUXEMBOURG RTC ENERGY

---

Umsatz-Angaben sind bei dieser Firma nur für Kunden unseres Premium Service verfügbar

# LUXEMBOURG RTC ENERGY

---



Luxembourg's integrated national energy and climate plan (PNEC) is an important element of the Grand Duchy's climate and energy policy. It sets out the national climate and energy objectives for 2030, as well as the policies and measures needed to achieve them.



Yes, Luxembourg offers various forms of government support to assist with gas and electricity costs. This includes subsidies for energy-efficient renovations, grants for renewable energy installations such as solar panels or a?