

# MALABO ENERGY STORAGE PLANT OPERATION



Simulation test of 50 MW grid-connected "Photovoltaic+Energy storage" A 50 MW "photovoltaic + energy storage" power generation system is designed. The operation performance of the power generation system is studied from various angles. The economic and environmental benefits in the life cycle of the system are explored. The



The International Renewable Energy Agency predicts that with current national policies, targets and energy plans, global renewable energy shares are expected to reach 36% and 3400 GWh of stationary energy



novel approach for integrating energy storage as an evolutionary measure to overcome many of the challenges, which arise from increasing RES and balancing with thermal power is presented. Energy storage technologies such as Power to Fuel, Liquid Air Energy Storage and Batteries are investigated in conjunction with flexible power plants. 1

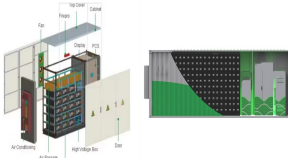


This laboratory platform has been specifically conceived to test operation modes in renewable power plants, including electricity energy storage. The main equipment of the experimental set-up is: a 1-kW PEM electrolyzer, a 1.5-kW PEM fuel cell, 7 Nm<sup>3</sup> metal hydride tank and a 367-A h



The Photovoltaic-energy storage-integrated Charging Station (PV-ES-ICS) is a facility that integrates PV power generation, battery storage, and EV charging capabilities (as shown in Fig. 1 A). By installing solar panels, solar energy is converted into electricity and stored in batteries, which is then used to charge EVs when needed.

# MALABO ENERGY STORAGE PLANT OPERATION



0.1 yuan/kWh From 1 January 2021 to 31 December 2023, energy storage systems of not less than 1 MWh will be subsidized by investment enterprises based on 20% of the actual investment in energy storage equipment, with a maximum of 500 thousand yuan The actual discharge in the peak segment is based on the subsidy of.



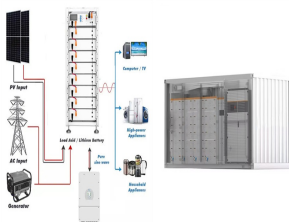
3 ? A preliminary design of the PROMETEO pilot plant has already been defined (a simplified system layout is described in []).The fully equipped prototype will install a 25 kW e SOE stack (about 15 kg/day of nominal hydrogen ???



Luba Oil Terminal Equatorial Guinea (LOTEG) is seeking to expand fuel storage services to the mainland and neighboring countries via two new projects underway and the construction of gas stations in the city of Malabo. Energy Capital & Power spoke to LOTEK Director General Pergentino Mba Nguema Alene about the impact of COVID-19 on the ???

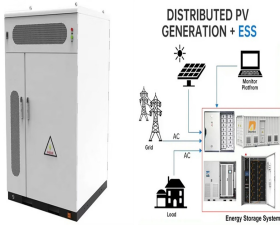


Anibal Dos Ramos on LinkedIn: Smart Energy Storage Factory from Goldwind. The first #Goldwind Smart Energy Storage Factory has officially opened and entered operations in Changzhou, China. The 20,000-square-meter plant, equipped with cutting-edge R& D laboratories and



Long-duration energy storage (LDES) is a key resource in enabling zero-emissions electricity grids but its role within different types of grids is not well understood. Using the Switch capacity

# MALABO ENERGY STORAGE PLANT OPERATION



This chapter presents the recent research on various strategies for power plant flexible operations to meet the requirements of load balance. The aim of this study is to investigate whether it is feasible to integrate the thermal energy storage (TES) with the thermal power plant steam-water cycle. Optional thermal charge and discharge locations in the cycle ???



MW Andasol solar power station is a commercial parabolic trough solar thermal power plant, located in Spain. The Andasol plant uses tanks of molten salt to store captured solar energy so that it can continue generating electricity when the sun isn't shining. [1] This is a list of energy storage power plants worldwide, other than pumped hydro storage.



10 ? Dubai Electricity and Water Authority (DEWA) has announced that its 250 MW pumped hydropower storage project in Hatta will begin trial operations in the first quarter of ???



Even though generating electricity from Renewable Energy (RE) and electrification of transportation with Electric Vehicles (EVs) can reduce climate change impacts, uncertainties of the RE and charged demand of EVs are significant challenges for energy management in power systems. To deal with this problem, this paper proposes an optimal ???



As the renewable energy fluctuating in the power grid, the traditional coal-fired power plant needs to operate on the extremely low load, so as to increase the share of renewable energy.

# MALABO ENERGY STORAGE PLANT OPERATION



Energy storage competitiveness is ubiquitously associated with both its technical and economic performance. This work investigates such complex techno-economic interplay in the case of Liquid Air Energy Storage (LAES), with the aim to address the following key aspects: (i) LAES optimal scheduling and how this is affected by LAES thermodynamic performance (ii) ???



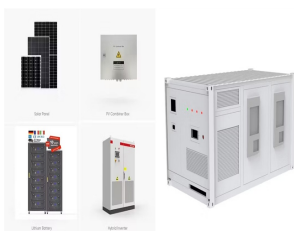
The concept of using Thermal Energy Storage (TES) for regulating the thermal plant power generation was initially reported in [1] decades ago. Several studies [2, 3] were recently reported on incorporation of TES into Combined Heat and Power (CHP) generations, in which TES is used to regulate the balance of the demand for heat and electricity supply.



1 ? Emirates News Agency. DUBAI, 12th November, 2024 (WAM) -- Dubai Electricity and Water Authority (DEWA) has announced that its pumped-storage hydroelectric power plant that it is implementing in Hatta is 94.15 percent ???



In this context, the combined operation system of wind farm and energy storage has emerged as a hot research object in the new energy field [6]. Many scholars have investigated the control strategy of energy storage aimed at smoothing wind power output [7], put forward control strategies to effectively reduce wind power fluctuation [8], and use wavelet packet ???



The award to Urbaser of the project for the design, construction and operation of the waste-to-energy plant in Thilafushi, Maldives, will have a concession period of 15 years. This facility has a management capacity of 500 tons of waste per day, a 13 MW electricity production facility, a slag recycling plant, a control system for the gases

# MALABO ENERGY STORAGE PLANT OPERATION



Pumped-storage hydroelectric plants are an alternative to adapting the energy generation regimen to that of the demand, especially considering that the generation of intermittent clean energy provided by solar and wind power will cause greater differences between these two regimes. In this research, an optimal operation policy is determined through a ???



Pumped Storage Hydropower Plants (PSHPs) are one of the most extended energy storage systems at worldwide level [6], with an installed power capacity of 153 GW [7]. The goal of this type of storage system is basically increasing the amount of energy in the form of water reserve [8]. During periods with low power demand (off-peak period), these



1. Introduction. The technical, economic and environmental feasibility of micro-cogeneration plants ???according to the cogeneration directive published in 2004 [1], cogeneration units with electric power below 50 kW e ??? in the residential sector is intimately tied to the correct sizing of micro-CHP and thermal energy storage systems, as well as to operation factors such ???



The 12th and final turbine unit of a pumped hydro energy storage (PHES) plant in Hebei, China, has been put into full operation, making it the largest operational system in the world. The 3.6GW Fengning Pumped Storage Power Station is located on the Luanhe River in Chengde City, Hebei Province, and is the largest PHES plant by installed

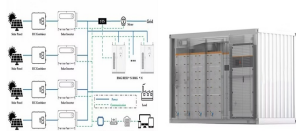


You've got to keep each turbine and dam in top shape, and other systems are essential to ensure efficient operation and energy storage capacity. Economic Benefits: Despite the high upfront costs, the long-term economic benefits of pumped storage plants are substantial. They provide flexibility in energy management, especially when it comes to

# MALABO ENERGY STORAGE PLANT OPERATION



The Significance of Plant Operations. Plant operations encompass the orchestration of various elements, from machinery and equipment to a skilled workforce and intricate processes. It's the epicentre of production, where every component works in harmony to achieve production targets, maintain product quality, and ensure operational efficiency.



Thermal Storage Power Plants (TSPP) as defined in Section 2 of this paper seem to be well-suited to cover the residual load with renewable energy and to reduce curtailment of excess power. They must be understood as highly flexible thermal power plants rather than as simple storage devices.



ANALYSIS OF SOLAR THERMAL POWER PLANTS WITH THERMAL ENERGY STORAGE AND SOLAR-HYBRID OPERATION STRATEGY  
Stefano Giuliano<sup>1</sup>, Reiner Buck<sup>1</sup> and Santiago Eguiguren<sup>1</sup> <sup>1</sup> German Aerospace Centre (DLR), , Institute of Technical Thermodynamics, Solar Research, Pfaffenwaldring 38-40, 70569 Stuttgart, Germany, +49-711-6862-633, ???