

# MAXIMUM POWER OF FLYWHEEL ENERGY STORAGE DEVICE



What is a 10 MJ flywheel energy storage system? A 10 MJ flywheel energy storage system for high quality electric power and reliable power supply from the distribution network, was tested in the year 2000. It was able to keep the voltage in the distribution network within 98%???102% and had the capability of supplying 10 kW of power for 15 min .



How efficient is a flywheel energy storage system? Their efficiency is high during energy storage and energy transfer ( $>90\%$ ). The performance of flywheel energy storage systems operating in magnetic bearing and vacuum is high. Flywheel energy storage systems have a long working life if periodically maintained ( $>25$  years).



Can small applications be used instead of large flywheel energy storage systems? Small applications connected in parallel can be used instead of large flywheel energy storage systems. There are losses due to air friction and bearing in flywheel energy storage systems. These cause energy losses with self-discharge in the flywheel energy storage system.



Can flywheel technology improve the storage capacity of a power distribution system? A dynamic model of an FESS was presented using flywheel technology to improve the storage capacity of the active power distribution system . To effectively manage the energy stored in a small-capacity FESS, a monitoring unit and short-term advanced wind speed prediction were used . 3.2. High-Quality Uninterruptible Power Supply



What are the applications of flywheels in electrical energy storage? The most common applications of flywheels in electrical energy storage are for uninterruptible power supplies (UPS) and power quality improvement[10,11,12]. For these applications, the electrochemical battery is highly mismatched and suffers from an insufficient cycle life, since the number of cycles per day is usually too high .

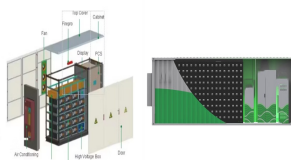
# MAXIMUM POWER OF FLYWHEEL ENERGY STORAGE DEVICE



What is a compact flywheel energy storage system? A compact flywheel energy storage system assisted by hybrid mechanical-magnetic bearings is proposed in . The magnetic levitation in the vertical orientation is maintained by the magnetic bearing, while the translational and rotational levitation is assisted by mechanical bearing.



Energy storage flywheel systems are mechanical devices that typically utilize an electrical machine (motor/generator unit) to convert electrical energy in mechanical energy and vice versa. Energy is stored in a fast-rotating mass known as the flywheel rotor. The rotor is subject to high centripetal forces requiring careful design, analysis, and fabrication to ensure the safe ???



This paper presents an overview of the flywheel as a promising energy storage element. Electrical machines used with flywheels are surveyed along with their control techniques. Loss minimization



The amount of energy stored,  $E$ , is proportional to the mass of the flywheel and to the square of its angular velocity is calculated by means of the equation (1)  $E = \frac{1}{2} I \omega^2$  where  $I$  is the moment of inertia of the flywheel and  $\omega$  is the angular velocity. The maximum stored energy is ultimately limited by the tensile strength of the flywheel material.



Considering the aspects discussed in Sect. 2.2.1, it becomes clear that the maximum energy content of a flywheel energy storage device is defined by the permissible rotor speed. This speed in turn is limited by design factors and material properties. If conventional roller bearings are used, these often limit the speed, as do the heat losses of the electrical machine, ???

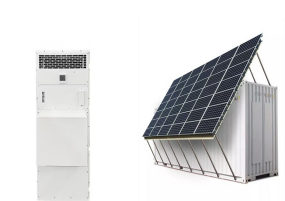
# MAXIMUM POWER OF FLYWHEEL ENERGY STORAGE DEVICE



Storage capacity is the amount of energy extracted from an energy storage device or system; usually measured in joules or kilowatt-hours and their multiples, it may be given in number of hours of electricity production at power plant nameplate capacity; when storage is of primary type (i.e., thermal or pumped-water), output is sourced only with



The flywheel storage technology is best suited for applications where the discharge times are between 10 s to two minutes. With the obvious discharge limitations of other electrochemical storage technologies, such as traditional capacitors (and even supercapacitors) and batteries, the former providing solely high power density and discharge times around 1 s ???



Combining energy sources like solar and wind with flywheel energy storage devices like a flywheel is one way to create a renewable energy system that is load balanced. Given the energy storage flywheel described in the table, answer the following questions. What is the mass of the flywheel? What is the top angular speed of the flywheel?



Storage capacity is the amount of energy extracted from an energy storage device or system; usually measured in joules or kilowatt-hours and their multiples, it may be given in number of hours of electricity production at power plant ???



The flywheel goes through three stages during an operational cycle, like all types of energy storage systems: The flywheel speeds up: this is the charging process. Charging is interrupted once the flywheel reaches the maximum allowed operating speed. The flywheel energy storage system is now at capacity. Connecting the rotating element to any

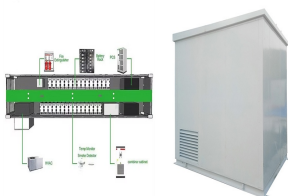
# MAXIMUM POWER OF FLYWHEEL ENERGY STORAGE DEVICE



Understand the concept, working, components and applications of flywheel energy storage for sustainable and reliable power generation. If this system is discharging energy at its maximum rate of 1 MW, it would take about 6 minutes to use up all the stored energy. the amount of backup power a flywheel energy storage system can provide



Flywheel is a rotating mechanical device used to store kinetic energy. It usually has a significant rotating inertia, and thus resists a sudden change in the rotational speed (Bitterly 1998; Bolund et al. 2007).With the increasing problem in environment and energy, flywheel energy storage, as a special type of mechanical energy storage technology, has extensive ???



The maximum speed limit at which a flywheel may operate is determined by the strength of the rotor material, An Overview on Short and Long-Term Response Energy Storage Devices for Power Systems Applications. Renew. Energy Power Qual. 2008, 1, 442???447. [Google Scholar]



Flywheel energy storage is a promising technology for replacing conventional lead acid batteries as energy storage systems. Most modern high-speed flywheel energy storage systems (FESS) consist of a huge rotating cylinder supported on a stator (the stationary part of a rotary system) by magnetically levitated bearings.



The hybrid energy storage system consists of 1 MW FESS and 4 MW Lithium BESS. With flywheel energy storage and battery energy storage hybrid energy storage, In the area where the grid frequency is frequently disturbed, the flywheel energy storage device is frequently operated during the wind farm power output disturbing frequently.

# MAXIMUM POWER OF FLYWHEEL ENERGY STORAGE DEVICE



Prime applications that benefit from flywheel energy storage systems include: Data Centers. The power-hungry nature of data centers make them prime candidates for energy-efficient and green power solutions. Reliability, efficiency, cooling issues, space constraints and environmental issues are the prime drivers for implementing flywheel energy



Advantages of Flywheel Energy Storage: High Power Density: FES has a very high power density, meaning it can quickly deliver much energy. This makes it suitable for applications that require high power output in a short time, such as uninterruptible power supply (UPS) systems and electric vehicles. FES can be used as a storage device in



Flywheel Energy Storage System (FESS) operating at high angular velocities have the potential to be an energy dense, long life storage device. Effective energy dense storage will be required for the colonization in extraterrestrial applications with intermittent power sources.



Flywheel energy storage systems (FESS) are one of the earliest forms of energy storage technologies with several benefits of long service time, high power density, low maintenance, and



2.1 Flywheel. Generally, a flywheel energy storage system (FESS) contains four key components: a rotor, energy-storage devices with high energy density and power density are suitable for applications where weight and size are among the main considerations. The maximum power and installed energy of the MITRAC Energy Saver were 300 kW and

# MAXIMUM POWER OF FLYWHEEL ENERGY STORAGE DEVICE



Flywheel is one of the oldest storage energy devices and it has several benefits. Flywheel Energy Storage System (FESS) can be applied from very small micro-satellites to huge power networks.  $e_v$  and  $e_m$  are kinetic energy per unit volume or mass, respectively,  $K$  is the shape factor,  $\rho$  is mass density and  $\sigma$ ,  $u$  is maximum stress in



The flywheel schematic shown in Fig. 11.1 can be considered as a system in which the flywheel rotor, defining storage, and the motor generator, defining power, are effectively separate machines that can be designed accordingly and matched to the application. This is not unlike pumped hydro or compressed air storage whereas for electrochemical storage, the



Flywheel energy storage (FES) works by accelerating a rotor (flywheel) to a very high speed and maintaining the energy in the system as rotational energy. The energy is converted back by slowing down the flywheel. Most FES systems use electricity to accelerate and decelerate the flywheel, but devices that directly use mechanical energy are being developed.



A flywheel-storage power system uses a flywheel for energy storage, (see Flywheel energy storage) and can be a comparatively small storage facility with a peak power of up to 20 MW. It typically is used to stabilize to some degree



The minimum speed of the flywheel is typically half its full speed, the storage energy is be given by  $\frac{1}{2} I \omega^2$  where  $I$  is the rotor moment of inertia in  $\text{kgm}^2$  and the  $\omega$  maximum rotational speed in  $\text{rad/s}$ . The power level is controlled by the size of the M/G, so this is independent of the rotor.



# MAXIMUM POWER OF FLYWHEEL ENERGY STORAGE DEVICE

114KWh ESS



The energy storage device is the main problem in the development of all types of EVs. In the recent years, lots of research has been done to promise better energy and power densities. But not any of the energy storage devices alone has a set of combinations of features: high energy and power densities, low manufacturing cost, and long life cycle.

114KWh ESS



According to the report of the United States Department of Energy (USDOE), from 2010 to 2018, SS capacity accounted for 24 %. consists of energy storage devices serve a variety of applications in the power grid, including power time transfers, providing capacity, frequency and voltage support, and managing power bills [[52], [53], [54]].



Flywheel energy storage system (FESS) is one of the most satisfactory energy storage which has lots of advantages such as high efficiency, long lifetime, scalability, high power density, fast



This review presents a detailed summary of the latest technologies used in flywheel energy storage systems (FESS). This paper covers the types of technologies and systems employed within FESS, the range of materials used in the production of FESS, and the reasons for the use of these materials. Furthermore, this paper provides an overview of the ???



the maximum energy that can be stored. immediate energy produced by gas ???red power plants. Flywheel energy storage systems can deliver. energy storage device with control electronics is