

MEANING OF ENERGY STORAGE SYSTEM BASE



What is a battery energy storage system? A battery energy storage system (BESS) is an electrochemical device that charges (or collects energy) from the grid or a power plant and then discharges that energy at a later time to provide electricity or other grid services when needed.



What is a battery energy storage system (BESS)? Battery Energy Storage Systems (BESS) are pivotal technologies for sustainable and efficient energy solutions.



What are energy storage systems? **ENERGY STORAGE SYSTEMS 1.1**
Introduction Energy Storage Systems (ESS) is a group of systems put together that can store and release energy as and when required. It is essential in enabling the energy transition to a more sustainable energy mix by incorporating more renewable energy sources that are intermittent



How does energy storage work? The so-called battery charges when power is used to pump water from a lower reservoir to a higher reservoir. The energy storage system discharges power when water, pulled by gravity, is released back to the lower-elevation reservoir and passes through a turbine along the way.



Who uses battery energy storage systems? The most natural users of Battery Energy Storage Systems are electricity companies with wind and solar power plants. In this case, the BESS are typically large: they are either built near major nodes in the transmission grid, or else they are installed directly at power generation plants.

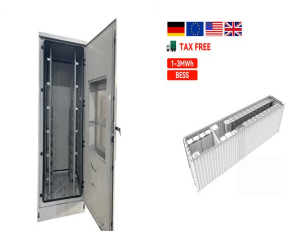
MEANING OF ENERGY STORAGE SYSTEM BASE



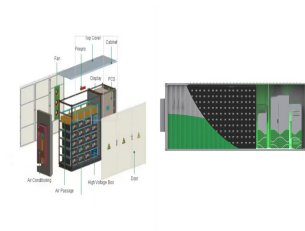
Why do we need a battery storage unit? e P, and Q in the system. In case of the dro of the frequency we need5 a source of energy storage. Battery storage units can be one viable o eters involved, which the7 ene while providing reliable10 services has motivated historical deve opment of energy storage ules in terms of voltage,15



In our previous article, we have defined what an energy storage is by using parameters like SoH, EoL, battery capacity, round-trip efficiency etc. to establish a base information set for



Energy storage systems and the battery quality and chemistry must be designed and selected based on future business models and use cases. Systems that do not take this into consideration may face



Energy Storage System (ESS) As defined by 2020 NEC 706.2, an ESS is "one or more components assembled together capable of storing energy and providing electrical energy into the premises wiring system or an electric power production and distribution network." These systems can be mechanical or chemical in nature.



The Office of Electricity's (OE) Energy Storage Division's research and leadership drive DOE's efforts to rapidly deploy technologies commercially and expedite grid-scale energy storage in meeting future grid demands. The Division advances research to identify safe, low-cost, and earth-abundant elements for cost-effective long-duration energy storage.

MEANING OF ENERGY STORAGE SYSTEM BASE



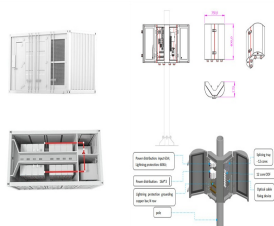
The first electrical energy storage systems appeared in the second half of the 19th Century with the realization of the first pumped-storage hydroelectric plants in Europe and the United States. Storing water was the first way to store potential energy that can then be converted into electricity. Pumped-storage hydroelectric plants are very



Tehachapi Energy Storage Project, Tehachapi, California. A battery energy storage system (BESS) or battery storage power station is a type of energy storage technology that uses a group of batteries to store electrical energy. Battery storage is the fastest responding dispatchable source of power on electric grids, and it is used to stabilise those grids, as battery storage can ???



Load shifting Battery energy storage systems enable commercial users to shift energy usage by charging batteries with renewable energy or when grid electricity is cheapest and then discharging the batteries when it's more expensive.. Renewable integration Battery storage can help to smooth out the output of cyclical renewable power generation sources, i.e., day vs. ???



A battery energy storage system (BESS) captures energy from renewable and non-renewable sources and stores it in rechargeable batteries (storage devices) for later use. A battery is a Direct Current (DC) device and when needed, the electrochemical energy is discharged from the battery to meet electrical demand to reduce any imbalance between



The rapid development of the global economy has led to a notable surge in energy demand. Due to the increasing greenhouse gas emissions, the global warming becomes one of humanity's paramount challenges [1]. The primary methods for decreasing emissions associated with energy production include the utilization of renewable energy sources (RESs) ???

MEANING OF ENERGY STORAGE SYSTEM BASE



Energy storage systems can be used in a wide range of applications, from something as small as a single battery to systems capable of powering entire towns. These days, the most common types of ESS are large-scale utility and home. Hanwha is hard at work delivering solutions in both segments to meet the growing demand for comprehensive green



Battery storage, or battery energy storage systems (BESS), are devices that enable energy from renewables, like solar and wind, to be stored and then released when the power is needed most.. Lithium-ion batteries, which are used in mobile phones and electric cars, are currently the dominant storage technology for large scale plants to help electricity grids ???



Some of the common examples of Solar Energy Storage system includes, Question 1: Define energy storage. Answer: The technique by which we store the energy that was generated all at once is known as energy storage. The act of converting energy into a form that can be retained economically for later use can also be referred to as energy storage.



For specific makes and models of energy storage systems, trays are often stacked together to form a battery rack. Battery Management System (BMS) The Battery Management System (BMS) is a core component of any Li-ion-based ESS and performs several critical functions. The BMS does not provide the same functionalities as an Energy ???



Definition. Primary energy storage systems are energy storage systems that are charged and discharged only once. (PV) facilities or accumulators at base stations. They do not require specific environmental conditions, but with larger storage systems of this kind there are very limited economies of scale. In addition, multiple decentralized

MEANING OF ENERGY STORAGE SYSTEM BASE



Thermal energy storage (TES) systems provide both environmental and economical benefits by reducing the need for burning fuels. Thermal energy storage (TES) systems have one simple purpose. That is preventing the loss of thermal energy by storing excess heat until it is consumed. Almost in every human activity, heat is produced.



The low level component control includes power electronic converters and hybrid energy storage system. The high supervisory algorithms provide an overall control of the low level components control which results in the improvement of vehicle performance. The high supervisory control include rule based control and optimization based control.



The U.S. Department of Energy (DOE) Energy Storage Handbook (ESHB) is for readers interested in the fundamental concepts and applications of grid-level energy storage systems (ESSs). The ESHB provides high-level technical discussions of current technologies, industry standards, processes, best practices, guidance, challenges, lessons learned, and projections ???



Energy (from Ancient Greek $\epsilon \nu \epsilon \rho \gamma \iota \alpha$ (en?rgeia) "activity") is the quantitative property that is transferred to a body or to a physical system, recognizable in the performance of work and in the form of heat and light. Energy is a conserved quantity???the law of conservation of energy states that energy can be converted in form, but not created or destroyed; matter and energy may ???

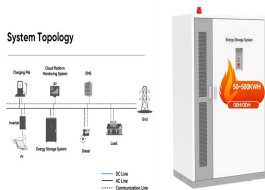


The HVAC is an integral part of a battery energy storage system; it regulates the internal environment by moving air between the inside and outside of the system's enclosure. With lithium battery systems maintaining an optimal operating temperature and good air distribution helps prolong the cycle life of the battery system. Without proper

MEANING OF ENERGY STORAGE SYSTEM BASE



In this sense, the traditional electrical system faces new challenges in managing these new distributed agents [6], and all this advancement demands emerging technologies for energy management. These smart grid services can be accessed through cloud services [7] and digital technologies that allow real-time network control, and through the Internet of Things ???



Electrical Energy Storage (EES) refers to systems that store electricity in a form that can be converted back into electrical energy when needed. 1 Batteries are one of the most common forms of electrical energy storage. The first battery???called Volta's cell???was developed in 1800. 2 The first U.S. large-scale energy storage facility was the Rocky River Pumped Storage plant in ???



Pumped hydro energy storage (PHES), compressed air energy storage (CAES), and liquid air energy storage (LAES) are three options available for large-scale energy storage systems (Nation, Heggs & Dixon-Hardy, 2017). According to literature, the PHES has negative effects on the environment due to deforestation and CAES technology has low energy density ???



Energy storage involves converting energy from forms that are difficult to store to more conveniently or economically storable forms. Some technologies provide short-term energy storage, while others can endure for much longer. Bulk ???

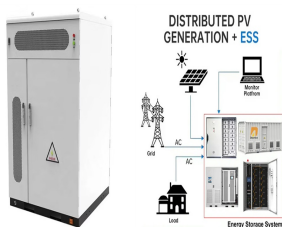


Energy storage systems for electricity generation operating in the United States Pumped-storage hydroelectric systems. Pumped-storage hydroelectric (PSH) systems are the oldest and some of the largest (in power and energy capacity) utility-scale ESSs in the United States and most were built in the 1970's. PSH systems in the United States use electricity from electric power grids to ???

MEANING OF ENERGY STORAGE SYSTEM BASE



A battery energy storage system is an electrochemical device that stores energy when demand for energy is low and releases it when demand is high. Solutions. Traders & Analysts; Wind and solar power can only generate power when the sun is shining or the wind is blowing, meaning some days they produce too little energy, and on extremely



The applications of energy storage systems, e.g., electric energy storage, thermal energy storage, PHS, and CAES, are essential for developing integrated energy systems, which cover a broader scope than power systems. Meanwhile, they also play a fundamental role in supporting the development of smart energy systems.



A battery energy storage system (BESS) is an electrochemical device that charges (or collects energy) from the grid or a power plant and then discharges that energy at a later time to provide electricity or other grid services when needed.



Battery Energy Storage Systems (BESS) play a fundamental role in energy management, providing solutions for renewable energy integration, grid stability, and peak demand management. In order to effectively run and get the most out of BESS, we must understand its key components and how they impact the system's efficiency and reliability.