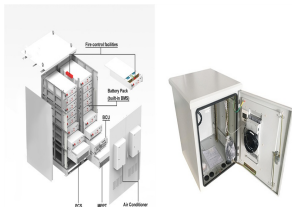


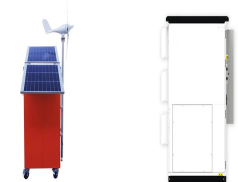
MEDIA BROADCAST FLYWHEEL TURBINE ENERGY STORAGE



From Table 2, it can be inferred that the FESS technology proves to be the best with maximum efficiency, low impact on the environment, high specific power and energy, high power and energy density, longer life cycle, faster in response, and requires very low maintenance. 31, 33 However, the primary shortcomings involved are extremely high self



Flywheel energy storage systems (FESS) are increasingly important to high power, relatively low energy applications. They are especially attractive for applications requiring frequent cycling given that they incur limited life reduction if used extensively (i.e., they can undergo many partial and full charge-discharge cycles with trivial wear



Flywheel energy storage (FES) is a technology that stores kinetic energy through rotational motion. The stored energy can be used to generate electricity when needed. Flywheels have been used for centuries, but modern FES systems use advanced materials and design techniques to achieve higher efficiency, longer life, and lower maintenance costs



Flywheel Energy Storage (FES) systems refer to the contemporary rotor-flywheels that are being used across many industries to store mechanical or electrical energy. Instead of using large iron wheels and ball bearings, advanced FES systems have rotors made of specialised high-strength materials suspended over frictionless magnetic bearings



Video Credit: NAVAJO Company on The Pros and Cons of Flywheel Energy Storage. Flywheels are an excellent mechanism of energy storage for a range of reasons, starting with their high efficiency level of 90% and estimated long lifespan. Flywheels can be expected to last upwards of 20 years and cycle more than 20,000 times, which is high in ???

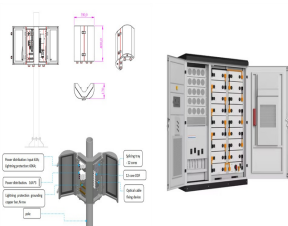
MEDIA BROADCAST FLYWHEEL TURBINE ENERGY STORAGE



Thanks to the unique advantages such as long life cycles, high power density, minimal environmental impact, and high power quality such as fast response and voltage stability, the flywheel/kinetic energy storage system (FESS) is gaining attention recently. There is noticeable progress in FESS, especially in utility, large-scale deployment for the electrical grid, ???



Energy storage systems are grouped by their types of energy storage media into mechanical, electrical, electrochemical, chemical, and thermal energy storage systems. This can also be seen in Table 4.3, where the installed rated power of flywheel energy storage systems is significantly higher than the installed rated capacity.



The flywheel energy storage system (FESS) offers a fast dynamic response, high power and energy densities, high efficiency, good reliability, long lifetime and low maintenance requirements, and is



This paper presents an overview of the flywheel as a promising energy storage element. Electrical machines used with flywheels are surveyed along with their control techniques. Loss minimization



Flywheel units are organized in clusters. Each flywheel unit has its power electronics, including power converter, motor controller, FPGA. The flywheel size (4-foot/1.2m diameter) is perfectly optimized to fit a cluster of 10 units inside a 20-foot container. Cables run from each flywheel unit to the associated power electronics rack.

MEDIA BROADCAST FLYWHEEL TURBINE ENERGY STORAGE



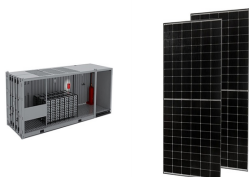
A project that contains two combined thermal power units for 600 MW nominal power coupling flywheel energy storage array, a capacity of 22 MW/4.5 MWh, settled in China. This project is the flywheel energy storage array with the largest single energy storage and single power output worldwide. The successful application of combined frequency



Flywheel energy storage system (FESS) will be needed at different locations in the wind farm, which can suppress the wind power fluctuation and add value to wind energy. A FESS that can store up to 3.6 kWh of usable energy in 12 minutes at a maximum 24,000 r/m was designed. Multiple flywheels can be interconnected in an array, or matrix, to provide various ???



Different energy storage technologies are applicable to different applications and fields, depending on system power and discharge time, the main application areas of energy storage technology can



The flywheel energy storage operating principle has many parallels with conventional battery-based energy storage. The flywheel goes through three stages during an operational cycle, like all types of energy storage systems: The flywheel speeds up: this is the charging process. Charging is interrupted once the flywheel reaches the maximum



With the rise of new energy power generation, various energy storage methods have emerged, such as lithium battery energy storage, flywheel energy storage (FESS), supercapacitor, superconducting magnetic energy storage, etc. FESS has attracted worldwide attention due to its advantages of high energy storage density, fast charging and discharging ???

MEDIA BROADCAST FLYWHEEL TURBINE ENERGY STORAGE



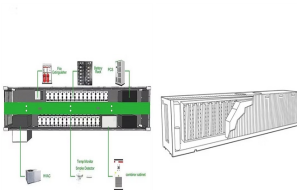
Lets check the pros and cons on flywheel energy storage and whether those apply to domestic use ():Compared with other ways to store electricity, FES systems have long lifetimes (lasting decades with little or no maintenance;[2] full-cycle lifetimes quoted for flywheels range from in excess of 10 5, up to 10 7, cycles of use),[5] high specific energy (100???130 ???



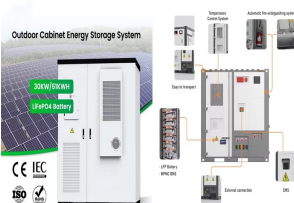
with battery energy storage systems (BESSs). Flywheel energy storage systems (FESSs) satisfy the above constraints and allow frequent cycling of power without much retardation in its life span [1???3]. They have high efficiency and can work in a large range of temperatures [4] and can reduce the ramping of conventional



?? Psouces - Psinks = d (K.E.) = d ?? Jt ??t 2 (1) dt dt i where P = active (real) power (MW) K.E. = kinetic energy of system J = rotating machine's moment of inertia ?? = rotating machine's angular velocity Seven of the proposed FESS units would meet the requirement estimated at 1MW for 10 minutes [7]. ??? Pulse power loads/systems.Two of the leading Pulse



The first flywheel unit of the Dinglun Flywheel Energy Storage Power Station in Changzhi City, Shanxi Province, was connected by project owner Shenzen Energy Group recently. Annual digital subscription to the PV Tech Power journal; Discounts on Solar Media's portfolio of events, in-person and virtual; View all benefits & pricing. Or



Flywheel units are organized in clusters. Each flywheel unit has its power electronics, including power converter, motor controller, FPGA. The flywheel size (4-foot/1.2m diameter) is perfectly optimized to fit a cluster of 10 ????

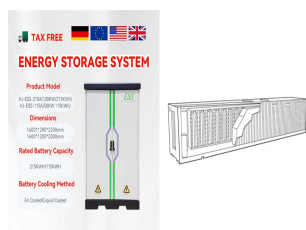
MEDIA BROADCAST FLYWHEEL TURBINE ENERGY STORAGE



This concise treatise on electric flywheel energy storage describes the fundamentals underpinning the technology and system elements. Steel and composite rotors are compared, including geometric effects and not just specific strength. A simple method of costing is described based on separating out power and energy showing potential for low power cost ???



Energy storage and power conditioning are the two major issues related to renewable energy-based power generation and utilisation. This work discusses an energy storage option for a short-term power requirement, which also acts as a power conditioner. A flywheel energy storage (FES) system can be easily constructed using various components



Active Power's Flywheel UPS offers unparalleled total cost of ownership, reliability, and sustainability for critical applications. With its battery-free energy storage, compact footprint, and up to 40% lower lifetime costs, it's the ultimate solution for high availability organizations.



Beacon Power is building the world's largest flywheel energy storage system in Stephentown, New York. The 20-megawatt system marks a milestone in flywheel energy storage technology, as similar systems have only been applied in testing and small-scale applications. The system utilizes 200 carbon fiber flywheels levitated in a vacuum chamber.



With more than 50 years engineering and manufacturing experience of power conditioning using battery and kinetic energy storage, Piller understands how to get the best out of modern power systems. Piller's battery energy storage systems (BESS) and flywheel energy storage systems (FESS) are capable of additional microgrid services such as grid

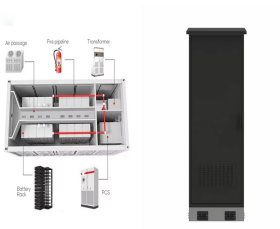
MEDIA BROADCAST FLYWHEEL TURBINE ENERGY STORAGE



These energy stores can be configured singularly or in parallel with a variety of Piller UPS units to facilitate a wide range of power-time combinations. The POWERBRIDGE??? is a highly compact, efficient and practical replacement for conventional batteries. The unit can deliver power above 3MW and provide 1MW of electrical power for over 60



The flywheel energy storage system (FESS) offers a fast dynamic response, high power and energy densities, high efficiency, good reliability, long lifetime and low maintenance ???



Energy storage systems (ESSs) are the technologies that have driven our society to an extent where the management of the electrical network is easily feasible. The balance in supply ???



Prime applications that benefit from flywheel energy storage systems include: Data Centers. The power-hungry nature of data centers make them prime candidates for energy-efficient and green power solutions. Reliability, efficiency, cooling issues, space constraints and environmental issues are the prime drivers for implementing flywheel energy



This review presents a detailed summary of the latest technologies used in flywheel energy storage systems (FESS). This paper covers the types of technologies and systems employed within FESS, the range of materials used in the production of FESS, and the reasons for the use of these materials. Furthermore, this paper provides an overview of the ???