

MEXICO LITHERITE SOLAR CELL



(Litherite Solar Cell),[EnE]- (Environmental Energy),MOD,Minecraft()MOD()MOD???



; ; / Minecraft /; MineCraft ; ;



Modifiers?. Modifiers are optional to use / replaced with Null Modifiers if you cannot afford to craft them. You can use higher and lower tiers of Modifiers and IO's on any tier Void Miner multi-block, such as Tier 5 Frequency Modifiers on a Tier 2 Void Miner multi-block. This is important to note, as the Tier 1 Void Miner needs more power than one Tier 1 FE Input can give the multi-block.

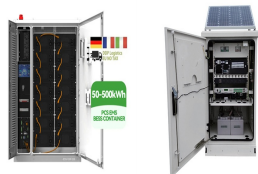


Solar Cells. Solar cells are obviously the most important part of the Solar Panel. Any combination of cells(Any tier) can be used on any Panel, meaning you could potentially use Nanorite and Xerotherm cells on a Litherite Solar Panel, or Litherite and Aethium cells on a Xerotherm Solar Panel. You are not limited to what cells you want to use in



Liquid crystals (LCs) have recently gained significant importance in organic photovoltaics (PVs). Power-conversion efficiency up to about 10% has reached in solar cells incorporating LCs. This

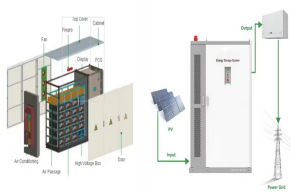
MEXICO LITHERITE SOLAR CELL



The Litherite is a block added by Environmental Tech. It can be used for decorative purposes and also be crafted back to Litherite Crystal, or to various machines from the mod and its decorative Feed The Beast Wiki. Solar Cell ? Laser Core ?



1 ? El nuevo dise?o de c?lula solar se present? en el estudio <<Reconstruction of Hole Transport Layer via Co-Self-Assembled Molecules for High-Performance Inverted Perovskite Solar Cells>> (Reconstrucci?n de la capa de transporte de huecos mediante mol?culas coautoensambladas para c?lulas solares de perovskita invertida de alto rendimiento



Ten years ago, commercial-sized solar cells had an efficiency rating of about 14 to 16 per cent. Mr Allen's company Sundrive has created a cell with 25.54 per cent efficiency, as tested by the



Solar Litherite Erodium Kyronite Pladium Ionite Aethium Panel Mods Frames Tier One 549 729 1,098 1,152 1,152 I'm one week in and I can't make even a single tier 2 solar panel with all tier 2 solar cells. That's how slow it is if you're not playing on a server where the miner works 24/7.



Solar cells are obviously the most important part of the Solar Panel. Any combination of cells(Any tier) can be used on any Panel, meaning you could potentially use Nanorite and Xerothium cells on a Litherite Solar Panel, or Litherite and Aethium cells on a Xerothium Solar Panel. You are not limited to what cells you want to use in your Solar

MEXICO LITHERITE SOLAR CELL



(Litherite Solar Cell),[EnE]- (Environmental Energy),MOD,Minecraft()MOD()MOD???



I just built myself a Tier 3 solar array using Litherite solar cells and according to This page I should be getting 12K RF/T but I'm only getting 4500. I'm not sure if this page is up to date or what. I'm using the Enigmatica 2 normal modpack.



; ; / Minecraft /; MineCraft ; ;



Solar Cells. Solar cells are obviously the most important part of the Solar Panel. Any combination of cells(Any tier) can be used on any Panel, meaning you could potentially use Nanorite and Xerothium cells on a Litherite Solar Panel, or Litherite and Aethium cells on a Xerothium Solar Panel. You are not limited to what cells you want to use in



Enigmatica 2 Expert: Environmental Tech Solar Array values . Litherite Erodium Kyronite Pladium Ionite Aethium Tier 1 549 729 1098 1467 2205 2943 Tier 2 4600 6125 9200 12275 18425



; ; / Minecraft /; MineCraft ; ;

MEXICO LITHERITE SOLAR CELL



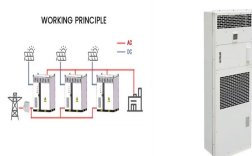
EVTech Solar Array values listed on the wiki is maximum RF generation. So the 549 RF/t is if you have the thing loaded up with Kyronite cells (or better). With Litherite cells you can only generate a max of 270 RF/t. Basically you gotta use the formula listed on the wiki to find out how much you can generate with a particular controller/cell



Solar cells are obviously the most important part of the Solar Array. Any combination of cells(Any tier) can be used on any Solar Array, meaning you could potentially use Nanorite and Xerothium cells on a Litherite Solar Panel, or Litherite and Aethium cells on a Xerothium Solar Panel. You are not limited to what cells you want to use in your



Mexico is on the brink of a significant transformation in its energy sector, highlighting its vast potential for clean energy. With a commitment to increasing renewable energy sources, President Claudia Sheinbaum aims for 45% of the nation's energy to come from clean sources by 2030.

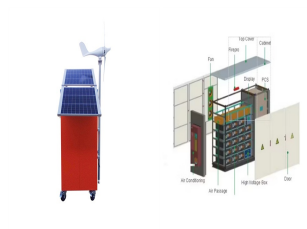


The Assembler is a tool added by Environmental Tech is used to build some of the machines added by the mod and to find out what blocks are required to build them. Usage []. Holding down the right mouse button on a control block (e.g., a Solar Array Controller Tier 1) with the parts required in the player's inventory (in this case, 9 Solar Cells, 9 Structure Frames, and 4 Null ???



(Litherite Solar Cell),[ET] (Environmental Tech),MOD,Minecraft()MOD()MOD???

MEXICO LITHERITE SOLAR CELL



The Piezo Modifier is a block added by Environmental Tech. It allows the Solar Array Controller to work in the rain. Tier 5 and Tier 6 solar arrays make about 3/4 of their original power due to them both having 12 piezo modifiers. Unfortunately these effects are greatly diminished on tiers with