

MOSO POWER STORAGE PRODUCTS



MOSO POWER SUPPLY TECHNOLOGY CO.,LTD. Address: MOSO Industrial Park, Xili Town, Nanshan District, Shenzhen Tel: 0755-27657408/27657266 E-Mail: sales@mosopower Website: Founded in 2006, MOSO Power Supply Technology Co., Ltd. ("MOSO Power", Stock code 002660) is a State level high-tech enterprise,



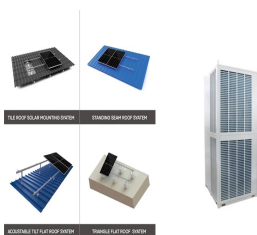
The X7I series is outdoor constant current LED driver that operates with high PF value and full power input voltage range 140~305Vac, and output current is adjustable with build-in potentiometer. Products. Road Lighting LED Driver Address: 1/4 MOSO Industrial Park, Xili Town, Nanshan District, Shenzhen, China(518108)



Resources MOSO is dedicated to provide professional service and strong support for our partners. Resources We strongly recommend that the first place you look for answers is our FAQ page. Technical specifications, installation guides, latest videos and other useful information are also available. If you have any questions, please feel free to contact our experts.



Universal input voltage: 90-305Vac; Constant power design; (M types) Offline programming through dimming wire, (V types) Setting current with a built-in variable resistor; 2-in-1 dimming mode: 0-10Vdc, PWM dimming; Dim-to-off; Surge protection: 4KV line-line, 6KV line-earth; Multiple protection: SCP, Output OVP, Input UVP, OTP; IP65 design for indoor and outdoor a?]



Universal input voltage : 108~305Vac; Full power work range: 140~305Vac; Isolated constant power design; Adjustable output current with potentiometer 1/4 ? 440Vac Protection: >48hours Surge protection: DM 6KV, CM 10KV; Protections: SCP / OVP / OTP; IP67 design for indoor and outdoor applications; Suitable for dry / damp / wet locations; 5 years warranty; Model: X7I a?]

MOSO POWER STORAGE PRODUCTS



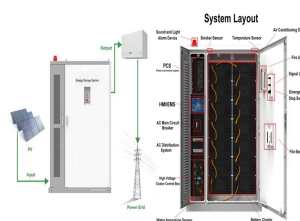
Moso Power launches its new series of U5 drivers; These are some of its peculiarities: Cost savings: Due to its focus on offering only the essentials, and not having the 24V supply, the price of the U5 is more competitive compared to other models that may have additional options. Simplified functionality: to offer only what each project needs, eliminating additional features a?]



MOSO POWER SUPPLY TECHNOLOGY CO.,LTD. Address: MOSO Industrial Park, Xili Town, Nanshan District, Shenzhen Tel: 0755-27657408/27657266 E-Mail: sales@mosopower Website: Founded in 2006, MOSO Power Supply Technology Co., Ltd. ("MOSO Power", Stock code 002660) is a State level high-tech enterprise,



Technology Innovation and Product Supremacy MOSO ELECTRONICS CORP. Founded in 2009, MOSO Electronics Corp. (LED BU) is a leading provider of intelligent LED drivers, which is affiliated to the listed company MOSO Power Technology Co., Ltd. (Stock code: 002660). The major business of MOSO is outdoor high-power LED driver, which covers Road Lighting LED a?]



The X6-600W series is 600W outdoor offline programmable LED driver that operates in constant current with high PF value and universal input voltage range 90~305Vac model, with high power factor, the highest conversion efficiency can reach 95% pliant with ERP2.0 standard, the maximum standby power consumption of remote shutdown is a??500mW.



Input voltage range: 176~264Vac; Constant power design; External NTCi 1/4 ? DALI-2 & VMF, Dim to offi 1/4 ? NFC programmablei 1/4 ? Constant Lumen Output (CLO)i 1/4 ? Suitable for luminaires of protection class I and II; Auxiliary power supply: a?]

MOSO POWER STORAGE PRODUCTS

FLEXIBLE SETTING OF MULTIPLE WORKING MODES



Input voltage: 90 ~ 305Vac; Isolated constant power Class II design; Off-line programmable; 0-5V/0-10V/PWM/timer dimming, CLO; Surge protection: DM 5KV; All-around protection: output SCP, OVP, OTP; Ingress protection rating: IP67; Warranty: 5 years. Model:XCP-105M062, a?|



Our Company Together, build a brighter future with us. About MOSO Founded in 2009, MOSO Electronics Corp. (referred to as MOSO) is a leading provider of intelligent LED drivers, which is affiliated to the listed company MOSO Power Technology Co., Ltd. (Stockcode:002660).MOSO is a national high-tech enterprise. We have 900+ employees and operate in over



- TELECOM CABINET
- BRAND NEW ORIGINAL
- HIGH EFFICIENCY

Input voltage range: 198~440Vac; Constant current design; DMX -RDM control optional, Support RDM control mode & controller address setting; Support flashing function with maximum of 6 flashes per second; Non-Isolated Class I Driver; Efficiency up to 97%; 3*500W channels independently output; DMX control interface; Dim-to-off; No glow after Dim-to-off; Max remote a?|



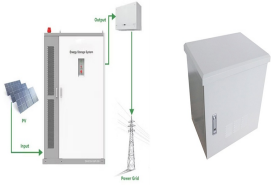
Input voltage: 90 ~ 305Vac; Isolated constant power design; Off-line programmable; 0-5V/0-10V/PWM/timer dimming, optional reverse dimming, Dim-to-off, CLO, work log function; Surge protection: DM 6 KV, CM 10KV; All-around protection: output SCP, OVP, OTP; Ingress protection rating: IP67; Warranty: 5 years. Products. Road Lighting LED Driver

i 1/4 ?i 1/4 ?,i 1/4 ?002660i 1/4 ?2006,a??,a??a??, a?|



- 100%/150%
- Probley up to 30%
- IP 67/68/69
- EMC AHD BBS

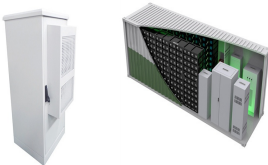
MOSO POWER STORAGE PRODUCTS



The industrial lighting is a constant power method, the output specification can be personalized and is compatible with the regulation method from 0-10 V and PWM. The DALI version is optional. All of them are integrated and rounded in structure, being able to adapt perfectly to the mechanical structure of the industrial lighting fixtures and



Moso Power Supply Technology Co., Ltd. Components & Battery Energy Storage I1214c ; ; Brand Name. MOSO. Products. Switching Power Supply, AC / DC Adapter, Switching Power Supply, AC / DC Adapter, USB-C Cable / Charger / Adapter / Hub, GaN/SiC USB Charger Other Products. MS-TB710J240-800A0. MS-P3320J250 a?|



Contact Us Contact us and our partners from different countries across the world. Contact Us 01Shen zhenHeadquarter Tel: +86 400 889 0018Email: info@mosopower Address: MOSO Industrial Park, Xili Town, Nanshan District, Shenzhen, China(518108)02Hui zhouManufacturing CenterTel: +86 400 889 0018Email: info@mosopower Address: Hongda (International) a?|



The X6-36W is constant-current output IP67 LED driver that operates from 90-305Vac input with excellent power factor and low THD. It is created for industrial lights, tunnel and street lights. The high efficiency of these drivers and compact metal case enable them to run cooler, significantly improving reliability and extending product life.



Input voltage: 90 ~ 305Vac; Isolated constant power design; Off-line programmable; 0-5V/0-10V/PWM/timer dimming, optional reverse dimming, Dim-to-off, CLO, work log function; Surge protection: DM 6 KV, CM 10KV; All-around protection: output SCP, OVP, OTP; Ingress protection rating: IP67; Warranty: 5 years. Products. Road Lighting LED Driver

MOSO POWER STORAGE PRODUCTS



Input voltage range: 176~264Vac; Constant power design; External NTC
 1/4 ? DALI-2 & VMF, Dim to offi 1/4 ? NFC programmablei 1/4 ? Constant
 Lumen Output (CLO)i 1/4 ? Suitable for luminaires of protection class I
 and II; Auxiliary power supply: 24V/250mAi 1/4 ? Surge protection: DM
 6KV, CM 10KV; Multiple protectioni 1/4 ?SCP,OVP(Output),OTPi 1/4 ?
 Meet the zhaga Book 13i 1/4 ? IP20i 1/4 ? 7 Years a?|



MOSO (R) Bamboo Outdoor benefits. With proven sustainable bamboo
 products, MOSO (R) offers a natural, fast-growing alternative for decking,
 siding, beams, boards and more, which meet the highest requirements..
 Enormous carbon storage; Hard & durable; Warranty up to 25 years;
 Natural beauty; Healthy choice



Universal input voltage : 108~305Vac; Full power work range:
 140~305Vac; Isolated constant power design; Adjustable output current
 with potentiometeri 1/4 ? 440Vac Protection: >48hours Surge protection:
 DM 6KV, CM 10KV; Protections: SCP / OVP / OTP; IP67 design for indoor
 and outdoor applications; Suitable for dry / damp / wet locations; 5 years
 warranty; Model: X7I a?|



i 1/4 ?i 1/4 ?,i 1/4 ?002660i 1/4 ?2006,a??,a??a??,230a??300