

MOTORCYCLE THAT CAN STORE ELECTRICITY



Trying to understand the electrical system on a motorcycle can sometimes be confusing and down right frustrating. Motorcycles have to generate electricity somehow; without it, headlights, blinkers, and even starting it in the first place wouldn't be possible.



Experiencing electrical issues with your motorcycle can be frustrating, especially when you suspect a short circuit. You're not alone in this; it's a common headache for riders. But don't worry, diagnosing an electrical short in your motorcycle's system is something you can tackle with a bit of know-how. Understanding the basics of your bike's electrical system is key. ???



AGM motorcycle batteries are less energy dense than lithium motorcycle batteries because of their chemistry and structure. As a result, a lithium battery is lighter and can store more energy. Recently, the energy density of a lithium battery ranges between 200 to 300 Wh/kg. In comparison, an AGM battery of the same size can have energy



Longevity: Proper maintenance can extend the lifespan of your battery, saving you money in the long run. Cost Savings: Regularly maintaining your battery can help you avoid the expense of purchasing a new one prematurely. The Compatibility of Battery Tenders with Motorcycles. Now, let's answer the pressing question: can a battery tender be used on a ???



Energy. Energy-Saving Tips; Home Insulation & Ventilation; Solar Power Solutions; Getting your motorcycle out of the garage can be a hassle, and the act can prove more challenging when you have limited space. How To Store A Motorcycle Without A Garage. By: William Harrison ??? Articles. 14 Amazing Motorcycle Mirrors for 2024. By:

MOTORCYCLE THAT CAN STORE ELECTRICITY



An electric motorcycle is a two-wheeled vehicle powered by an electric motor that uses electrical energy stored in rechargeable batteries. Unlike traditional motorcycles that ???



By adding a battery storage system, you can store excess electricity generated by your bike-powered generator. This allows you to use the stored power during periods of low output or when the bike is not in use. NICECNC Orange Key Ignition Switch Relocation Relocating Bracket Motorcycle Compatible with KTM 250EXCF 350EXCF 450EXCF 500EXCF



A motorcycle stator plays a crucial role in generating electricity for the bike. It powers the bike's electrical elements and keeps the battery charged. Where can I find a motorcycle's stator? The stator is usually located on the left side of the engine crankshaft, opposite the carburetor or air intake.

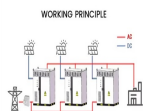


If you plan to store your motorcycle for an extended period, consider using a battery tender to maintain your battery's charge. Yes, a motorcycle can be started while the Battery Tender is still connected. However, it is recommended to disconnect the Battery Tender before starting the motorcycle to avoid any potential electrical issues.



The Best Electric Motorcycles. Now that you're privy to what sets proton-powered bikes aside from their gas-powered counterparts and are armed with what areas to consider when shopping, let's dive into our picks for ???

MOTORCYCLE THAT CAN STORE ELECTRICITY



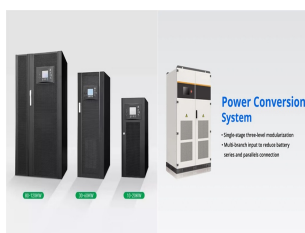
Evaluate the motorcycle's performance, including acceleration, top speed, and handling; Consider your riding preferences and whether the motorcycle meets your performance expectations or not; Battery Technology. Understand the type of battery used in the electric motorcycle. Mostly lithium-ion batteries are common due to their energy density



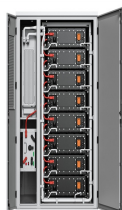
Riding a Can-Am all-electric motorcycle is a fully connected experience. Each model has a large high-res 10.25" touchscreen display with Apple CarPlay, giving you access to navigation apps like Google Maps and Waze to help you find the nearest charging station wherever you ride.



I hope these suggestions were helpful and assist you in finding the best way you can store your motorcycle specific to where you are at in life. Having a motorcycle is such a joy, but having to store it is a pain. I know that from my own experience. If you follow these tips, your motorcycle is sure to stay happy and keep you rolling on into



An electric motorcycle is a motorcycle powered by electricity. Electric motorcycles have recently begun to gain popularity. There are a few different types of electric motorcycles. They have a higher energy density, so they are lighter weight than lead acid batteries, meaning they can store more energy per unit of weight. A kind of lithium

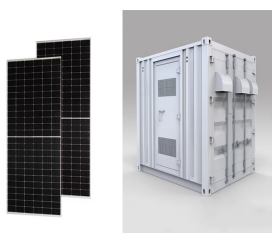


The Cheapest Ways to Store a Motorcycle. The most common way to store a motorcycle is at your house. Whether it's in a garage if you have one, where it is protected fully from the elements, in a shed if you have one, or covered with a weather-resistant protector you will have no extra storage charge for holding onto your motorcycle.

MOTORCYCLE THAT CAN STORE ELECTRICITY



3%? So instead of declaring a single winner, we put together a list of electric motorcycles that are truly in production (no vaporware here) and noteworthy (we do include a few prototypes as honorable ???)



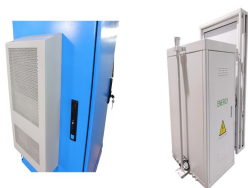
Built to embody the Ninja(R) lineage, the Ninja(R) e-1 ABS is a full-size EV motorcycle powered by a quiet, compact brushless electric motor offering excellent response and torque for around town riding. Riders can confidently ???



At the heart of the electrical system is the battery, which stores electrical energy for use by the motorcycle's components. The battery is charged by the alternator, a device driven by the engine, which converts mechanical energy into electrical energy. (Ah) and indicates how much electrical energy the battery can store. A higher



Electric vehicles perform better than ICE models in urban traffic and areas since the Passive Regen gives back some power every time you slow or release the accelerator, plus, The Can-Am Pulse & Origin have the first in the industry Active Regen to give back even more energy to the battery and provide a smooth and controlled deceleration (ATTENTION, it is not a brake, a ???)



Prepare Your Motorcycle for Storage. Before you store your motorcycle without a garage, it's essential to prepare it properly to ensure it remains in good condition during the storage period. Follow these steps to prepare your bike for storage: 1. Clean your motorcycle: Thoroughly wash and dry your bike to remove any dirt, debris, or road

MOTORCYCLE THAT CAN STORE ELECTRICITY



How Many Watts Does A Motorcycle Use . Most motorcycles have between 16 and 403 Watts of power depending on the battery's voltage and ampere-hours. 12V motorcycle batteries often have a higher wattage than 6V batteries, ranging from 32 to 403 Watts compared to 16 to 202 Watts for 6V batteries.. As the wattage of your motorcycle's battery might vary greatly, it is advisable to ???



The starter uses electricity to charge the spark plugs for initial combustion. If your battery is dead, your starter won't operate, but if your starter itself is bad, all the battery volts in the world won't start your motorcycle. Here are four symptoms of a failing starter: 1. Motorcycle will not Start. I know what you're thinking.



2. Check and Change Your Fluids???All of Them Over time, the chemicals in your motorcycle's fluids can break down and become acidic, potentially causing damage. If you haven't changed your fluids in the (very) recent past, replace all fluids, including brake and clutch fluid and coolant, before storage to prevent any corrosion or other issues.



Here are four innovative ways we can store renewable energy without batteries. Giant bricks are not what most people think of when they hear the words "energy storage", but they are a key element of a gravity-based system that could help the world manage an increasing dependence on renewable electricity generation.

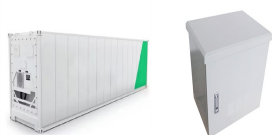


MIT researchers discover that mixing water, cement, and carbon black can create supercapacitors that can store and supply renewable energy. electric motorcycle and scooter design (331)

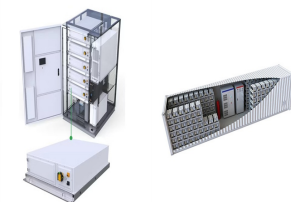
MOTORCYCLE THAT CAN STORE ELECTRICITY



If we don't use it, it goes to waste. That's because we can't store electrical energy. How can we avoid wasting it? Well, we can convert it into other forms of energy that can be stored. For example, batteries can convert electrical energy into chemical potential energy. Other systems can convert electrical energy other types of energy.



Electric motorcycles, as the name implies, are powered by electricity, unlike their gasoline-powered counterparts. Three main components constitute an electric motorcycle: the battery, the electric motor, and the controller. The battery stores the electrical energy that powers the motorcycle. It's typically lithium-ion, similar to what you



Motorcycle Lost Power While Riding? 8 Causes and Quick Fixes!QuoteQ. Your motorcycle requires a sufficient and consistent electricity supply to run. Even a single broken wire can cause the whole system to shut down completely. Therefore, if your motorcycle loses all electrical power while riding, components of the electric system are to blame.



Even if it's only its rectifying function that's failing to convert the AC to DC, the battery can't store the electrical current. Instead, it'll kill your bike's battery power while the cycle is in use. One of the most typical and easily fixable reasons a motorcycle loses electricity while riding is because of an unstable or

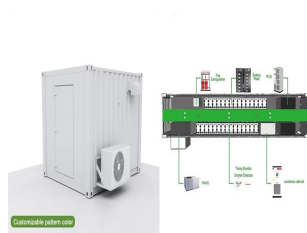


battery A device that can convert chemical energy into electrical energy. capacitor An electrical component used to store energy. Unlike batteries, which store energy chemically, capacitors store energy physically, in a form very much like static electricity. carbon The chemical element having the atomic number 6. It is the physical basis of

MOTORCYCLE THAT CAN STORE ELECTRICITY



Renewable energy resources have played an important role to meet increasing energy demand in the world. Among the renewable energy resources, especially, wind energy is of interest due to some



Electricity is quite different. Where petrol is an energy store, electricity is energy. It can't be bottled, and to store it you need to convert it into something else ??? usually chemical energy in batteries when we're talking about electric bikes. You can't see or smell electricity, nor can you weigh it or measure it by size.



Misconception: A motorcycle can't run without a battery. Reality: While a battery plays a crucial role in starting a motorcycle and powering its electrical components, once the engine is running, the alternator takes over to provide electrical power to the bike. So, a motorcycle can indeed continue running after the battery is disconnected.



The sad truth about motorcycles is that they need special treatment if they're going to sit for even just a few weeks. The gas in the tank and the chemicals storing electricity in the battery are the first to suffer, and both of those are important for getting your bike back underway. However, many other things can accelerate the wear on your motorcycle if you ???