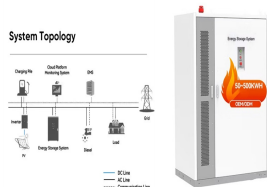


NUKU ALOFA RV ENERGY STORAGE POWER SUPPLY



Nuku'alofa Network Upgrade Project (IFR TON 49450-036) ECONOMIC ANALYSIS A. Introduction 1. The implementing agency, Tonga Power Limited (TPL), generates and distributes electricity across four islands: Tongatapu, "Eua, Ha"apai, and Vava'u. The Nuku'alofa Network



Nuku'alofa, TONGA: a 3.5 Minute Video . Part of a new series of videos edited down to 3.5 minutes to show the highlights. Join me on this whistle-stop tour of Nuku'alofa, Tonga's sleepy capital in the middle of the Pacific Ocean.



NUKU'ALOFA, TONGA (14th November 2019) ??? Tonga's second Large scaled Battery Energy Storage System (BESS) will be built at Matatopa after an agreement was signed today between ???



Tonga: Pacific Renewable Energy Investment Facility: Nuku'alofa Network Upgrade Project 4 Dec 2022 View Cite Add to list Share. The project will convert the distribution network of the Nuku'alofa with climate resilient infrastructure. The project will target the Area 5 of the Tonga Power Limited (TPL)'s overall plan of converting all 5



5. Learn About Tongan Traditions at Ancient Tonga. Tonga is a nation with a rich island culture, which can be difficult to fully appreciate especially if you're only visiting Nuku'alofa ??? that's unless you visit Ancient Tonga!The cultural centre offers "Half" and "Full Culture Tours" revolving around Tongan arts, crafts, dance and food.

NUKU ALOFA RV ENERGY STORAGE POWER SUPPLY



The exact time it takes to drive around Nuku'alofa depends on factors such as traffic conditions, the route taken, and any stops or detours along the way. On average, it can take around 20 to 30 minutes to complete a loop around the city. Nuku'alofa is situated on the main island of Tongatapu, and the road network is relatively straightforward.



LFP energy storage system GRES-150/100. for solar applications off-grid containerized. Voltage: 380 V. Energy capacity: 150 kWh. Power: 100 kW. 150/100 commercial and industrial energy storage system, which is an intelligent and modular power supply equipment integrating lithium battery and MPSCS.



. Nuku'alofa ??? Prime Minister Honourable Hu"akavameiliku said the opening of Tonga's first ever large-scale Battery Energy Storage Systems at Matatoa in Tofoa here on Tongatapu on Tuesday, October 25 marks a significant milestone and tangible progress towards the Government's national objectives for the energy sector, towards our nation's transition to ???



Nuku'alofa Network Upgrade Project (IFR TON 49450-036) SUMMARY
POVERTY REDUCTION AND SOCIAL STRATEGY 2035.b This framework outlines that energy plays a critical role in achieving its goals and already identifies the project Benefits to the poor are indirect in that a more reliable and safer power supply contributes to



2. WATER SUPPLY SYSTEM DESCRIPTION 2.1 NUKUALOFA- Urban Supply. Mataki-Eua Map: 2 Locality plan of Nuku'alofa Urban supply. (Davendra Nath-SOPAC) 2.1.1 Catchment and Intake The intake for the Nuku'alofa supply is from the bore well field of under ground freshwater lens. There is a network of 36 hand-dug or tube driven well within 140 acres

NUKU ALOFA RV ENERGY STORAGE POWER SUPPLY



(ii) Output 2 - Effective, efficient, and sustainable water supply services in Nuku'alofa: The core subproject will (a) increase the water production at the Mataki'eua Tongamai wellfield; (b) increase the raw water storage capacity; (c) improve the management of the water supply network through the creation of



The evolution of RV energy storage. While traditional lead-acid batteries have been the mainstay of RV energy storage for decades, the landscape has changed dramatically. Today, lithium-ion batteries have taken center stage and offer numerous advantages. Compared to lead-acid batteries, lithium-ion batteries are lighter, have higher energy density, last longer, ???



Tonga Water Supply System Description Nuku'alofa/ Lomaiviti The source of water supply in the rural areas is mainly of underground freshwater lens. There is usually one dug well with a diesel operated pump capable of supplying water to a small community of about 500 people or less.



NUKU'ALOFA, TONGA (18th July 2019) ??? Tonga's first Large scaled Battery Energy Storage System (BESS) will be built at the Popua Power Station after an agreement was signed today between Tonga Power Limited and Akuo Energy SAS, an energy company specializing in developing and operating renewable energy power plants. Battery Energy Storage Systems ???



Vava'u will enjoy solar power integration with a new solar and battery energy storage system that was commissioned in Kameli, Neiafu, on 14 March. The completion of major electricity grid upgrades in two out of five areas under the Nuku'alofa Network Four Tonga Power Limited staff directly involved with a petition that allegedly

NUKU ALOFA RV ENERGY STORAGE POWER SUPPLY



The project will convert the distribution network of the Nuku'alofa with climate resilient infrastructure. The project will (i) convert the open overhead network to covered area bundled ???



2. WATER SUPPLY SYSTEM DESCRIPTION 2.1 NUKUALOFA- Urban Supply. Mataki-Eua Map: 2 Locality plan of Nuku'alofa Urban supply. (Davendra Nath-SOPAC) 2.1.1 Catchment and Intake The intake for the Nuku'alofa supply is from the bore well field of under ground freshwater lens. There is a network of 36 hand-dug or tube driven well within 140 acres



Reference ??? Nuku'alofa Network Upgrade Project: Supply of Power Poles ??? for Tonga presented by Asian Development Bank (HQ) (goods), budget is USD 1378338, in Electrical Engineering, Energy sectors



DFAT Nuku'alofa Urban Development Sector Project 2012???2017 6.1 Nuku'alofa Reconstruction Assistance 2007???2008 0.8 People's Republic of China Nuku'alofa City Reconstruction Project 2007???2011 67.9 European Commission Sustainable Urban and Environmental Management Capacity Building and Environmental Protection 2008???2012 2.6



Nuku'alofa Urban Development Sector Project (RRP TON 42394-22) 1 Initial Environmental Examination The subproject for upgrading water supply, production, storage and distribution has been assessed to be an urban infrastructure project of high priority. Electricity supply will be overhead lines connected to the existing power supply

NUKU ALOFA RV ENERGY STORAGE POWER SUPPLY



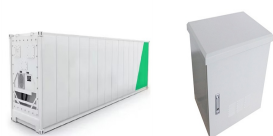
Battery Energy Storage Systems; Community. Safety. Cyclone Safety Tips; Dial before you dig; Energy Efficiency. Energy Efficiency Rating; Nuku'alofa (NNUP). Tonga Power Limited is Tonga's sole electricity provider. We generate, distribute and sell electricity to 25,043 customers in the Kingdom of Tonga, including the outer islands



Nuku'alofa: The core subproject will (a) increase the water production at the Mataki'eua Tongamai wellfield; (b) increase the raw water storage capacity; (c) improve the management of the water supply network through the creation of supply zones and improved bulk supply metering;



1.1.1 Power supply and distribution system 2 1.1.2 Challenges for the electricity network 4 1.2 Overview of the Project 4 1.3 Purpose and Objective of IEE 6 2 Administrative, Legal and Policy Framework 8 2.1 Country Safeguards System 8 2.1.1 Environmental laws and regulations 8 2.1.2 Tonga's energy policy and laws 11



Battery Energy Storage Systems are a vital component to reaching Tonga's 50% Renewable Energy target by end of year 2020. Battery Energy storage systems will be able to store renewable energy generated from our existing solar and wind generation sites and distribute it to the people of Tonga when required.



How to Visit Nuku'alofa on a Budget. Tonga's capital city is a budget-friendly destination for backpackers and travellers on a budget. Nuku'alofa is Tonga's "big smoke", which is well worth spending at least a couple of days exploring to uncover the vibrant Tongan culture. The city is the home to the royal family, where their historical sites and iconic structures can be ???

NUKU ALOFA RV ENERGY STORAGE POWER SUPPLY



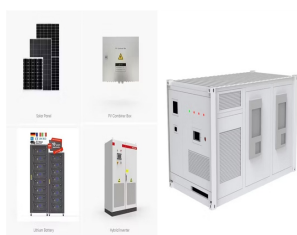
A new "state-of-the-art" 2MW h Cummins Genset generator, commissioned at Tonga Power Ltd's power plant at Anana in Nuku'alofa, yesterday, 14 February, will help meet peak demand on Tongatapu. The generator, worth about \$1.038 million pa'anga, was commissioned by the Australian High Commissioner to Tonga, HE Rachael Moore.



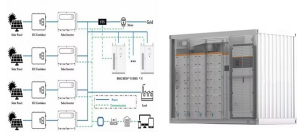
Nuku'alofa through the Nuku'alofa Reconstruction Project and the Integrated Urban Development 2Sector Project. II. THE PROJECT A. Rationale 3. Urban growth. Nuku'alofa, Tonga's capital, has a population of 34,058 (34% of the national population) and is forecast to grow to 45,000 (or about 40% of Tonga's population) by 2030.



The project will rehabilitate 16.5 kilometers of the medium-voltage transmission network, upgrade 50 kilometers of the low-voltage distribution network in seven villages, climate- and disaster-proof the Nuku'alofa electricity network and connect 59 new households to the grid.. The project will also enhance gender inclusiveness of Tonga Power Limited (TPL) by providing ???



Project Name Paci???c Renewable Energy Investment Facility:
Nuku'alofa Network Upgrade Project Project Number 49450-036 project will target the Area 5 of the Tonga Power Limited (TPL)'s overall plan of converting all 5 areas of Nuku'alofa network. Impact Electricity supply reliability in Nuku'alofa improved.



Nuku'alofa, Tonga, May 17th, 2022 ??? Akuo, an independent global renewable energy power producer and developer, and Tonga Power Limited, the Tonga Islands' public grid operator, announce that they commissioned Tonga 1 & 2, the South Pacific's largest battery energy storage system with a total capacity of 29.2 MWh / 16.5 MW. A stationary battery service

NUKU ALOFA RV ENERGY STORAGE POWER SUPPLY



Pacific Renewable Energy Investment Facility: Nuku'alofa Network
Upgrade Project Project Number 49450-036 Country / Economy.
Electricity supply reliability in Nuku'alofa improved. Project Outcome
Tonga Power Limited | PO Box 429, Nuku'alofa, Kingdom of Tonga :
Ministry of Finance : 1,414,000.00 ???