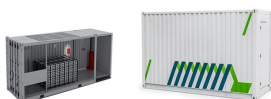


OCEAN PHOTOVOLTAIC PANEL INSTALLATION DIAGRAM



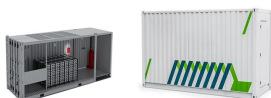
How many solar panels do I need for Oceanvolt propulsion system? For applications where shore power is not available, Oceanvolt recommends a minimum of 200 W of solar panels for their system. Using solar panels with an Oceanvolt propulsion system requires either a Victron MPPT series charge controller or a Genasun Li-Ion Boost controller.



How do I choose the right solar panels for my Boat? Sizing the appropriate solar panels requires some thought and following the steps below. A boat that uses an electric motor as its primary power source requires a much larger solar panel array (and the balance of the system) than one that doesn't. You must inventory every electricity device to calculate the boat's electrical consumption.



How many knots can a boat run with solar panels? A boat suitable for Oceanvolt motors can run approximately 3 knots with a 1 kW solar panel installation. This is a general article about installing solar panels on a boat. It is possible to do solar motoring with the Oceanvolt system.



Can you use solar motors with Oceanvolt? Yes, it is possible to do solar motoring with the Oceanvolt system. Oceanvolt has done boats with up to 5 kW (50x 100 W) panels. The system shows the current yield from the panels and the motor speed can easily be adjusted to match the solar power to get independence. Typically, 1 kW of solar gets about 3 knots for a boat suitable for Oceanvolt motors.



How do solar panels provide power to a boat? Solar panels on a boat provide power to the boat by generating electricity when exposed to sunlight. The system shows the current yield from the panels and the motor speed can be adjusted to match the solar power for independence. Typically, 1 kW of solar panels can provide about 3 knots of power for a boat suitable for Oceanvolt motors.

OCEAN PHOTOVOLTAIC PANEL INSTALLATION DIAGRAM



Can marine solar panels be walked on? Some semi-rigid marine solar panels can be walked on, which makes them ideal for mounting on the deck fixed roof. Fully flexible solar panels are the least efficient of all the types. Their advantage is that they can be molded to the mounting surface's shape.



All about Solar Panel Wiring & Installation Diagrams. Step by step PV Panel installation tutorials with Batteries, UPS (Inverter) and load calculation. Breaking News. 50% OFF on Pre-Launching Designs - Ending Soon ; Get Free Android App | Download Electrical Technology App Now!



Solar panel diagrams are an essential tool for both the installation and maintenance of solar panel systems. These diagrams provide a visual representation of how the panels are connected and how the energy flows ???



With solar panels accounting for 54% of all new electricity generation capacity, you are still not immune to emergencies and power outages unless you rely on an off-grid solar power system.. Speaking of which, ???



In conclusion, a wiring diagram for solar panels plays a crucial role in ensuring the correct installation, efficient operation, and easy maintenance of a solar panel system. It provides a visual guide for connecting all the components of the system correctly, helps with troubleshooting, and ensures the seamless integration of new components.

OCEAN PHOTOVOLTAIC PANEL INSTALLATION DIAGRAM



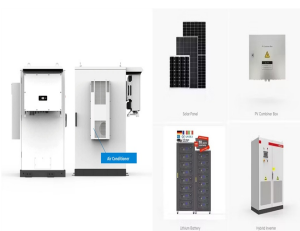
These are just a few examples of the types of solar panel systems available. The choice of system depends on factors such as location, energy needs, budget, and aesthetic preferences. Consulting with a solar panel installation professional can help determine the most suitable system for individual requirements. Designing a Solar Panel System



Use the full diagram to see everything connected together in high res detail, or the individual bonus config illustrations to understand how it all fits together. DIY Off-Grid Solar Wiring Diagram.pdf ??? 248 KB; Solar Panel Array Configuration.pdf ??? 117 KB; Solar Panel Array Wiring.pdf ??? 127 KB; 14kWH Battery Bank Configuration.pdf ??? 81.7 KB



However, it is still important to learn how to properly install a PV connector, since in some cases or sections, the system may require you to make the connection yourself. This will probably occur if you do not find an MC4 extension cable with the right length. Connect solar panel strings in parallel by using a connector known as MC4 T

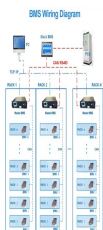


The 4 diagrams below show a 400 watt solar panel wiring diagram wired in parallel and series with 2 x 200w and 4 x 100w panel configurations. For a full breakdown of the detail, comparisons, and even an ???



Contains all the information you need to install solar power on your yacht or boat. 18 pages including information on: What solar energy can do for a sailing yacht. A typical solar panel system for a yacht. What size and type of solar panel do ???

OCEAN PHOTOVOLTAIC PANEL INSTALLATION DIAGRAM



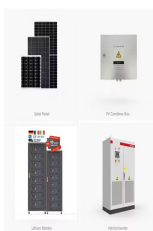
These terms form the backbone of solar panel wiring and assist in determining the optimal configuration for any given solar power system. Basic Concepts of Solar Panel Wiring (aka Stringing) Solar panel wiring, commonly referred to as ???



Wiring Diagram of my 310W solar install on a VW California Ocean. Anything marked VW is VW OEM equipment, the rest is available on t"internet. therefore less loss in the solar panel wiring for a given wire size. As my panels came with 2.5 mm2 wiring, they will be wired in series. Got a bit further after having a think and working



Do not install solar panels in enclosed space. ! Do not install solar panels in locations where they may be !submerged in water . ! Do not use solar panels as a substitute for normal !roofing (sol ar panels are not watertight). Do not install solar panels in close proximity to air conditioning !systems. Do not install solar panels above 4000 m



The number of MPPTs depend on the amount of panels. Oceanvolt has done boats with up to 5 kW (50x 100 W) panels. SOLAR MOTORING. It is possible to do solar motoring with the Oceanvolt system. The system shows the current yield from the panels and the motor speed can easily be adjusted to match the solar power to get independency.



Expert Insights From Our Solar Panel Installers About Solar Panel Diagrams. Understanding the components and how they work together is crucial for an efficient solar panel installation. Each part, from the cover glass to the ???

OCEAN PHOTOVOLTAIC PANEL INSTALLATION DIAGRAM



How to install solar panels wiring . Solar panel wiring installation is not overly complicated if you understand basic electricity procedures. First, there is a positive wire and a grounding wire. Most solar components have a port for a positive wire and a grounding wire. Next, you would use a ferrule to attach the wires to the components



In this guide, we will concisely explain how solar panels work with helpful diagrams and a step by step explanation. How solar panels work. Solar Energy Diagram. This solar panel diagram shows how solar energy is converted to create free electricity for your business or home. How solar panels work step by step. The sun gives off light, even on



A short circuit in a solar panel happens when the solar panel becomes faulty and does not produce any more electricity from the sun. If a solar array is wired in parallel, a single faulty solar panel can lead to a fire because all the electricity produced from the remaining functioning panels will force its way toward the faulty panel instead of toward the charge ???



Simplified diagram of an off-grid system. Solar panel, battery, charge controller, and inverter. How To Install Solar Panels on a VW Camper Van The PV System Structure. The PV system has several components to store and power your home. The solar panels are placed on the roof, and the number of panels and the wattages will depend on the

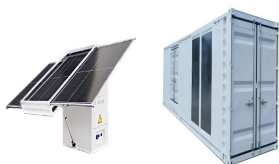


Use appropriate wire sizes to handle the current load and ensure the connections are secure and protected. Connect the wires to the appropriate terminals in the main electrical panel. 7. Install Surge Protection Devices. Install surge protection devices at various points in the system to protect against electrical surges and voltage spikes.

OCEAN PHOTOVOLTAIC PANEL INSTALLATION DIAGRAM



Solar panels are great to have, but they can be a bit confusing to install. The wiring diagrams are especially intimidating for those that don't know what they're looking at. To help clear things up, we put together this beginner-friendly guide on solar panel wiring diagrams. A solar panel wiring diagram is a roadmap, a guide, and a



By understanding the basics of solar panel systems, individuals can make informed decisions about incorporating this technology into their homes or businesses. With proper installation and maintenance, solar panel systems can provide a reliable and sustainable source of electricity for years to come. Choosing the Right Solar Panel and Inverter



Photovoltaic system diagram: components. A photovoltaic system is characterized by various fundamental elements:.. photovoltaic generator; inverter; electrical switchpanels; accumulators. Photovoltaic generator. The photovoltaic generator is the set of solar panels and is the element that converts solar energy into electricity.. These panels consist in ???



Using solar panels with Oceanvolt propulsion system requires either Victron MPPT series charge controller or Genasun Li-Ion Boost controller. The former is used where the amount of panel voltage is 60-150 VDC/70 amps, the latter if ???



Solar Panels perform at optimum capacity when placed in direct sunlight. When you install your Solar Power system, try to position your photovoltaic panels directly under the noontime sun for maximum efficiency ???

OCEAN PHOTOVOLTAIC PANEL INSTALLATION DIAGRAM



A Brief Guide to PV Installation Diagrams Photovoltaic (PV) installations are becoming increasingly popular, offering an environmentally-friendly way to generate energy with minimal investment. As such, it is important for anyone considering a solar energy system to understand the basic components of a PV installation diagram and what they mean



Practically speaking, when useable area is limited, a 22% efficient 300W solar panel could take up most of the available space, limiting the room for future panels and increasing the complexity of wiring, whereas it could be possible to install 2x 200W modules plus a 160W solar panel on a single controller, greatly increasing the total power of the array and keeping the wiring ???



Navigating the world of marine solar panel installations can be daunting. This article aims to simplify the process, providing a step-by-step guide to ensure your boat harnesses the sun's power efficiently.