

# OUTDOOR PHOTOVOLTAIC PANEL LEADER



What is a leader(R) solar panel Y connector? LEADER(R) solar panel y connector is used for safe and simple series or parallel connecting solar PV modules, inverters, or solar power plant systems. Certification with TUV/UL/IEC/CE standards, suitable for 2.5-16mm photovoltaic solar cables.



Are solar panels a good choice for a vineyard? There's a good chance if you're considering solar panels that you'll be looking at PV or photovoltaic Solar panels. Of course, if you live in a vineyard in South Spain, your options may vary, but for most of us in the UK, PV cells are the obvious choice. The next thing you may want to consider is the feasibility of installing solar.



What are advanced monitoring systems for solar panels? Advanced monitoring systems for solar panels now provide real-time data on the performance and health of a solar PV system. These systems track key metrics such as energy production, voltage levels, and temperature across individual panels and the entire system.



Are ground-based solar panels better than rooftop solar panels? On the plus side, such a system allows homeowners without suitable roof structures to enjoy the benefits of solar power. Ground-based solar panels are also easier to maintain than their rooftop cousins. After all, it's a lot easier to remove detritus like stray leaves, snow, and other debris at ground level.



Do ground-based PV panels work for domestic use? Despite being more common for commercial energy providers, ground-based PV Panels also work for domestic use. Right now, there are two kinds of ground-based panels. Both use typical PV panels, and the only difference is their fixtures. The most common are standard ground-mounted panels.

# OUTDOOR PHOTOVOLTAIC PANEL LEADER



What is a perovskite-silicon tandem solar panel? Their commercially-available perovskite-silicon tandem solar cells boast an efficiency a shade under 30%. The secret sauce behind the new panel is a material called perovskite. Perovskite, like silicon, is a crystalline substance with impressive energy conversion potential.



Solar Panel Outdoor Test. June 4, 2024; Krisenvorbereitung & Prepping  
>> Solar Panel Outdoor Test. Ganz gleich, ob du einen Roadtrip, einen Strandausflug oder einen Campingausflug planst, es kann eine ???



Protection IP67 For Outdoor Waterproof & UV Resistance; Quick And Easy To Install & Long-term Stable Connection; Our Solar Connectors Have Connected Over 9.8 GW By 2021 Product Display; Description. LEADER(R) solar panel y connector is used for safe and simple series or parallel connecting solar PV modules, inverters, or solar power plant



Sarcos Technology and Robotics a leader in the design, development, and manufacture of advanced robotic systems that redefine human possibilities, announced today that it has successfully completed final ???



LEADER(R) solar panel extension cable runs between the solar panel and the charge controller or between two solar panels, supports custom len|Sola. Our Solar Show In 2024 : \* SOLARTECH INDONESIA 2024 Mar 6-8 \* \* RenewableEnergy Expo Almaty 2024 April 10-12 \* \* Intersolar Middle East Dubai 2024 April 16-18 \* \* SOLAR AFRICA Kenya 2024 May 8-10

# OUTDOOR PHOTOVOLTAIC PANEL LEADER



Description. MC4 In-line Fuse LEADER(R) Solar Wire Harness is manufactured with automated precision, offering optimal efficiency and long-term performance for small to large-scale PV systems. Certified by TUV/UL/IEC/CE standards and are suitable for 2.5-16mm<sup>2</sup> photovoltaic solar cable. Up to 25 years of working life, with long-term stable electrical contact performance.



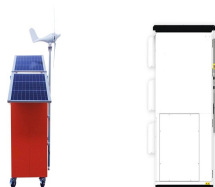
Description. MC4 In-line Fuse LEADER(R) solar panel wiring is manufactured with automated precision, offering optimal efficiency and long-term performance for small to large-scale PV systems. Certified by TUV/UL/IEC/CE standards and are suitable for 2.5-16mm<sup>2</sup> photovoltaic solar cable. Up to 25 years of working life, with long-term stable electrical contact performance.



Description. MC4 In-line Fuse LEADER(R) solar t connector is manufactured with automated precision, offering optimal efficiency and long-term performance for small to large-scale PV systems. Certified by TUV/UL/IEC/CE standards and are suitable for 2.5-16mm<sup>2</sup> photovoltaic solar cable. Up to 25 years of working life, with long-term stable electrical contact performance.



Our users can search for the best solar panel providers by address and postcode or check out our supplier's map. Our vast, living database updates daily. It includes contacts and reviews for the best renewable energy ???



MC4 In-line Fuse LEADER(R) solar panel connectors are manufactured with automated precision, offering optimal efficiency and long-term performance for small to large-scale PV systems. Certified by TUV/UL/IEC/CE standards and ???

# OUTDOOR PHOTOVOLTAIC PANEL LEADER



LEADER(R) solar panel y connector is used for safe and simple series or parallel connecting solar PV modules, inverters, or solar power plant systems. Certification with TUV/UL/IEC/CE standards, suitable for 2.5-16mm<sup>2</sup> ???



The output of electricity throughout the world can be stored in photovoltaic (PV) systems. The total installed PV system capacity worldwide now stands at 505 GW after 100 GW of the new range was added in 2018 [] ina increased its capacity by about 45 GW alone in 2018, raising its total to 176 GW.



LEADER(R) 6mm solar cable is highly flexible cable specially designed for connecting photovoltaic panels, compatible with all major connectors, certified by various international certifications such as TUV/UL/IEC/CE/RETIE, compliant with UL4703, IEC62930 and EN50618 standards, It is suitable for different photovoltaic power generation fields such as solar plants, rooftop solar ???



LEADER(R) Solar Panel Cable Wire Stripper Tool designed to crimp solar connectors onto 14/12/10AWG(2.5/4.0/6.0mm<sup>2</sup>) solar cable; this crimper is the perfect tool for installing and maintaining solar panel connectors. Precise crimping die design and complete locking ensure high-pressure connection quality during repeated crimping, and high transmission force is controlled ???



6 ? Discover if you need batteries with the Tactacam solar panel in our comprehensive guide. Learn how this innovative solution harnesses solar energy, reducing battery replacements for outdoor cameras. We cover installation tips, maintenance advice, and scenarios where batteries may still be needed. Embrace a sustainable power source that ensures you never ???

# OUTDOOR PHOTOVOLTAIC PANEL LEADER



Suitable For Harsh Outdoor Environments TUV/UL/IEC/CE Certified & 25 Years Lifetime Category: TUV Solar Cables. Tags: Photovoltaic Wire, Solar Cables, Solar Panel wire. Datasheet Inquiry. Description. MC4 Wi LEADER(R) Photovoltaic Wire is a highly flexible cable specially designed for connecting photovoltaic solar systems. It has obtained



PV Junction Box With 2 Rail 1 Diodes For Thin Film Solar Panel Modules. Waterproof Outdoor Solar Junction Box for Solar Panel. Key pillars for shining success. LEADER GROUP Hotline +8613642919927 (WhatsApp/WeChat/Zalo) LEADER GROUP Email. info@leadergroup-cn



LEADER(R) solar panel cable connectors is compatible with popular solar module connectors, TUV/UL/IEC/RETIE/CE Certified, and 25 Years Product|sola It is suitable for various harsh outdoor environments such as ???



Description. MC4 In-line Fuse LEADER(R) Solar Panel Connectors are manufactured with automated precision, offering optimal efficiency and long-term performance for small to large-scale PV systems. Certified by TUV/UL/IEC/CE standards and are suitable for 2.5-16mm photovoltaic solar cable. Up to 25 years of working life, with long-term stable electrical contact ???



Description. MC4 In-line Fuse LEADER(R) PV In-line Fuse Connector is manufactured with automated precision, offering optimal efficiency and long-term performance for small to large-scale PV systems. Certified by TUV/UL/IEC/CE standards and are suitable for 2.5-16mm photovoltaic solar cable. Up to 25 years of working life, with long-term stable electrical contact ???

# OUTDOOR PHOTOVOLTAIC PANEL LEADER



LEADER(R) pv wire is highly flexible cable specially designed for connecting photovoltaic panels, compatible with all major connectors, certified by various international certifications such as TUV/UL/IEC/CE/RETIE, compliant with ???



Description. MC4 In-line Fuse LEADER(R) solar y connector is manufactured with automated precision, offering optimal efficiency and long-term performance for small to large-scale PV systems. Certified by TUV/UL/IEC/CE standards and ???



Description. MC4 In-line Fuse LEADER(R) tyco solar panel connectors are manufactured with automated precision, offering optimal efficiency and long-term performance for small to large-scale PV systems. Certified by TUV/UL/IEC/CE standards and are suitable for 2.5-16mm photovoltaic solar cable. Up to 25 years of working life, with long-term stable electrical contact ???



Description. MC4 In-line Fuse LEADER(R) solar branch connector is manufactured with automated precision, offering optimal efficiency and long-term performance for small to large-scale PV systems. Certified by TUV/UL/IEC/CE standards ???



Description. MC4 In-line Fuse LEADER(R) PV Connector is manufactured with automated precision, offering optimal efficiency and long-term performance for small to large-scale PV systems. Certified by TUV/UL/IEC/CE standards and ???



# OUTDOOR PHOTOVOLTAIC PANEL LEADER



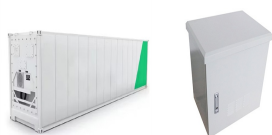
LEADER(R) solar panel cable is highly flexible cable specially designed for connecting photovoltaic panels, compatible with all major connectors, certified by various international certifications such as TUV/UL/IEC/CE/RETIE, compliant with UL4703, IEC62930 and EN50618 standards, It is suitable for different photovoltaic power generation fields such as solar plants, rooftop solar ???



LEADER(R) branch connector solar is used for safe and simple series or parallel connecting solar PV modules, inverters, or solar power plant systems. Certification with TUV/UL/IEC/CE standards, suitable for 2.5-16mm photovoltaic solar cables.



Leader Group specializes in the R& D and production of photovoltaic connection system products such as solar connectors, solar cables, solar junction boxes, solar wiring harnesses, and power cables. It has three production bases, covering an area of more than 120,000 square meters and employing more than 1,200 people.



LEADER(R) pv junction is used for crystalline silicon or thin-film solar photovoltaic modules. It consists of three parts: box body, solar PV cable, and solar connector. The product has passed the TUV/UL/IEC/CE standard certification, providing ???



LEADER(R) waterproof outdoor solar junction box is used for crystalline silicon or thin-film solar photovoltaic modules. It consists of three parts: a box body, solar PV cable, and solar connector. The product is certified by TUV/UL/IEC/CE ???