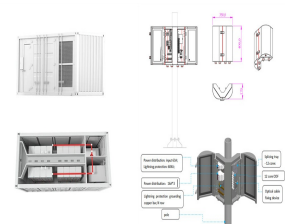


PERU EAPLWORLD



Peru shares its borders with Ecuador, Brazil, Bolivia, Chile and Colombia, which is shown in the map of Peru. 1,285,220 square kilometers is the total area of the country. Of the total area, the area covered by land is 1.28 million square kilometers and the remaining 5,220 square kilometers is covered by water bodies. 2,414 kilometers make up



From the soaring peaks of the Andes and the lush Amazon Rainforest to pre- Columbian ruins and Spanish colonial mansions, Peru summons with the allure of the ancient and mysterious. Let Real World Travel take you on a luxury vacation to this fascinating country and its most significant sites, including the "lost city" of Machu Picchu.



Peru shares its borders with Ecuador, Brazil, Bolivia, Chile and Colombia, which is shown in the map of Peru. 1,285,220 square kilometers is the total area of the country. Of the total area, the area covered by land is 1.28 ???



Blank Map of Peru. PDF. Peru is a country with many ancient cultures and civilizations, Norte Chico civilization is one of the oldest civilizations in America. During the era of 3500 BCE, it was the Inca empire which is also the largest state in the pre-Columbian Americas. Peru has the oldest civilization history in comparison to any other country.



The Republic of Peru is one of the most important centers of cultural and tourist attractions in the world. Its rich history and travel opportunities abound are staged amid the country's wonderful landscapes. A Peru map is filled with majestic Andes Mountains, the mysterious Amazon jungle, and coastal desert. Map of Peru Peru is located

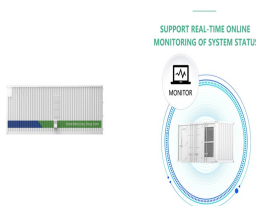


Blank Map of Peru. PDF. Peru is a country with many ancient cultures and civilizations, Norte Chico civilization is one of the oldest civilizations in America. During the era of 3500 BCE, it was the Inca empire which is also ???

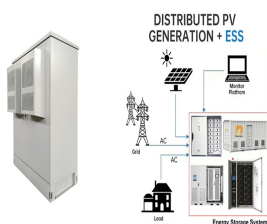
PERU EAPLWORLD



River Map Peru displaying the lakes and flowing path of the rivers in Peru. The major rivers of Peru include Napo, Amazonas, Tigre, Pastaza, Marañon, Huallagea, Pachitea, Ucayali, Javari, Tanbo, Ocaña and Lake Titicaca.



4 ? Peru, country in western South America. Except for the Lake Titicaca basin in the southeast, its borders lie in sparsely populated zones. Peru has a great diversity of climates, ways of life, and economic activities. The capital is ???



The United Nations Educational, Scientific and Cultural Organization (UNESCO) World Heritage Sites are places of importance to cultural or natural heritage as described in the UNESCO World Heritage Convention, established in 1972. [1] Peru ratified the convention on February 24, 1982, making its historical sites eligible for inclusion on the list. [2] As of 2021, Peru has 13 sites on ???



Map is showing Peru and the surrounding countries. Click on the map to enlarge. Political Map of Peru: More about Peru: Cities: Satellite View and Map of Lima Country: Political Map of Peru Peru Country Profile Continent: Political Map of South America : Current Weather Conditions Lima



The Independence of Peru is celebrated from 27th to 29th July throughout Peru. Festivities are also observed in Lima. A big military parade is held and sports events, concerts, and theatrical shows are common on this day. The Procession of the Lord of Miracles is the largest of its kind in South America. It is celebrated in October or November.

PERU EAPLWORLD



An Amazon rainforest map illustrates the immensity of the Amazon rainforest which extends 2.5 square miles (5.5 million square kilometers) across South America. Today, the Amazon represents over half (about 54%) of the planet's remaining tropical rainforest regions and protects the largest reserves of natural resources in the world. In South America, the Amazon ???



Peru Travel Tips 2025: Cash/Card ??? Bring some USD to change to soles. Credit Cards accepted everywhere. ATM withdrawals have high fees. Rainbow Mountain, Huacachina Oasis and Secret Slave Tunnels in Chincha are Peru's fastest growing tourist attractions in 2025!; Internal Flights ??? use LATAM Airlines, most reliable company by far Bus Travel/Day Tours ??? use PERU HOP, ???



Johanna Patricia Botta is a roommate on The Real World: Austin. Retrieved from MTV Johanna and Wes started dating after filming. They went on to do Real World/Road Rules Challenge: Fresh Meat as a couple and remained a couple after. During the The Gauntlet III reunion, Johanna revealed that she and Wes were no longer together. Johanna hosted the ???



Peru Property News. Prime Global Residential Rents Hit Record High in Q1. Posted on June 16, 2023. Global Commercial Investment Hits \$282 Billion in Early 2022. Posted on May 13, 2022. Global Home Prices Spike 9.2 Percent in Mid-2021. Posted on September 24, 2021.



About Peru. Explore this Peru map to learn everything you want to know about this country. Learn about Peru location on the world map, official symbol, flag, geography, climate, postal/area/zip codes, time zones, etc. Check out Peru history, significant states, provinces/districts, & cities, most popular travel destinations and attractions, the capital city's location, facts and trivia, and

PERU EAPLWORLD



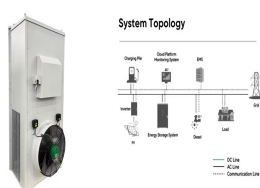
Peru is situated on the western coast of South America, bordered by Ecuador and Columbia in the north, Brazil and Bolivia to the east, and Chile to the South. It is the 3th largest country on the continent, after Brazil and Argentina, and is the 20th largest country in the world. Renowned for the ancient Andean civilizations, such as the Incas, it is easily forgotten that Peru is home to ???



Real World Evidence. Peru COVID-19 and Ivermectin.pdf COVID-19 case fatalities and total deaths with and without mass ivermectin treatment in different states of Peru. rev Jan 28, 2021.pdf



Map of Peru, a country of ancient cultures, staggering natural beauty, and diverse landscapes. Nestled on the Pacific coast of South America, Peru unfolds from the arid Coastal plains, through the peaks and valleys of the Andes, into the lush expanse of the Amazon rainforest.



The Sacred City of Caral-Supe, or simply Caral, is an archaeological site in Peru where the remains of the main city of the Caral civilization are found. It is located in the Supe valley of Peru, near the current town of Caral, 182 kilometers north of Lima, 23 km from the coast and 350 metres above sea level. [1] It is attributed an antiquity of 5,000 years and it is considered the ???



Present-day Peru is settled by Quechua and Aymara between the fifth and eight century. The Wari (or in Spanish spelling and other common name, Huari Culture) was a Middle Horizon civilization that flourished in the Andes in the south of modern-day Peru, from about 500 to 1200 A.D. The capital city of the same name is located near the modern city of ???