

PHOTOVOLTAIC DC CABLE CONNECTED TO THE INVERTER



Understanding PV Panels and Inverters. Understanding the functions of PV panels and inverters is essential before installation. For converting sunlight into direct current (DC) power devices known as Solar ???



The formula resulted in a recommendation of two parallel, 2x300 mm² aluminum DC cables from the PV string combiner box to the inverter. The cable length was also reviewed to ensure that the



Here I'll quote from a Grid Connect PV manual by GSES: "Although not mentioned in AS/NZS 5033:2012, AC voltage drop/rise [i.e. between the inverter and the switchboard] should be kept as low as possible. (measured in cross sectional area ??? millimetres squared) for the DC cables that run from the panels to the inverter is 1.5mm², 2



PDF | On Jun 13, 2020, Munwar Ayaz Memon published Sizing of dc-link capacitor for a grid connected solar photovoltaic inverter | Find, read and cite all the research you need on ResearchGate



To connect a solar inverter to your house, you need to follow a few simple steps. First, check your system's compatibility and ensure you have the necessary equipment. Then, connect the DC output from your solar panels to the DC input of the inverter. Finally, connect the AC output of the inverter to your house's electrical system.

PHOTOVOLTAIC DC CABLE CONNECTED TO THE INVERTER



The system dynamics of an inverter and control structure can be represented through inverter modeling. It is an essential step towards attaining the inverter control objectives (Romero-cadaval et al. 2015). The overall process includes the reference frame transformation as an important process, where the control variables including voltages and currents in AC form, ???



Before you can create an electrical circuit, you need to settle on the appropriate solar system wires. This will enable the current to flow in the circuit to the inverter, which will transform the DC power to AC. Before deploying any solar PV system, check your local electrical codes, which regulate electrical installations in your area.



9 PV ARRAY CABLE BETWEEN ARRAY AND INVERTER 26 10
INVERTER INSTALLATION 28 10.2 PV array DC isolator near inverter
(not applicable for micro inverter AC and modules systems) 29 10.3 AC
isolator near inverter 30 10.4 AC Isolators for micro inverter installation 31
10.5 AC cable selection 31 10.6 Main switch inverter supply in
switchboard 32



One aspect of designing a solar PV system that is often confusing, is calculating how many solar panels you can connect in series per string. This is referred to as string size. If you are unfamiliar with the terms "series" and "string", it could be a good idea to head over to our article Introduction to Electricity for Solar PV Systems to get familiar with the electrical terminology



Solar power cables are responsible for transporting electricity from panels to inverters and their connected components. cables, which are usually two-core, connect the main power supply, the generator assembly box, and the solar command inverter, with DC cables being commonly used for outdoor applications. A live wire is typically red

PHOTOVOLTAIC DC CABLE CONNECTED TO THE INVERTER



2.5.1 PV array charge controller 29 2.5.2 Battery overcurrent protection 29
2.5.3 Battery disconnection 29 2.5.4 Cables in battery systems 30 2.5.5
PV String cable and fuse ratings 30 2.5.6 Battery selection and sizing 30
2.5.7 Battery installation/labelling 31 2.6 System performance 32 2.6.1
Inverter sizing 30 2.6.2 System performance 33



DC [2???4]. Inverters available on the market are typically rated from a few kW to a few hundred kW [3???5]. For maximum PV array output, the power must optimally match the rated power of a PV array with the inverter's rated power. Therefore, it is common for several strings to be connected in parallel at the inverter input. The inverter



PV panels generate DC power and an inverter changes that into usable AC electricity. In this guide, we will discuss how to wire solar panels to an inverter in simple steps. using a red cable and a connector. Step 3: Connect ???

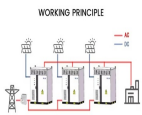


The SMA CORE1 62-US datasheet lists the rated maximum system voltage and MPP voltage range (highlighted). String Sizing Calculations
How to calculate minimum string size:. The minimum string size is the minimum number of PV modules connected in series required to keep the inverter running during hot summer months.



String cables can be connected to an inverter directly or by way of an AC connection, a DC combiner box or the node string technique. Some solar panels have DC cables built in. Main DC Cable: these cables join the junction box negative and positive wires to an inverter. 2mm, 4mm and 6mm cables are either single or dual core. Dual core cables

PHOTOVOLTAIC DC CABLE CONNECTED TO THE INVERTER



To supply the electrical installation, the DC output from the modules is converted to AC by a power inverter unit which is designed to operate in parallel with the incoming mains electricity supply to the premises, and as such is commonly known as a "grid-tie" inverter. The AC output of the PV inverter (the PV supply cable) is connected to



Click above to learn more about how software can help you design and sell solar systems. Basic concepts of solar panel wiring (aka stringing) To have a functional solar PV system, you need to wire the panels together to create an electrical circuit through which current will flow, and you also need to wire the panels to the inverter that will convert the DC power produced by the panels ???



Next up is the Solar Cable. These cables connect the inverter to the AC distribution panel. They're built to handle alternating current. It's used in the DC part of solar PV systems, connecting solar panels to inverters. It's tough enough to be buried underground and can handle rough outdoor conditions well.]



Inverter ??? DC and AC Isolator switches. The inverter is usually located in your loft or garage. The DC cables from the solar modules are run into a DC isolator switch then connected to the inverter. The inverter should be correctly specified for the size of the array (KWp) on your roof and be compatible with the solar modules chosen.



These convert the DC power from photovoltaic (PV) modules directly into AC power to be fed into the grid. Battery/Inverter Cables and Connectors Solar grid connect inverters are also called "string" inverters because the PV modules must be wired together in a series string to obtain the required DC input voltage, typically up to 600

PHOTOVOLTAIC DC CABLE CONNECTED TO THE INVERTER



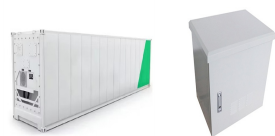
Function: DC cables are the frontline soldiers in a solar plant, directly connecting solar panels to the solar inverter. They carry the direct current generated by solar panels. Characteristics: These cables are designed to ???



4. Connect the DC cables from the combiner box to the inverter. 5. Connect DC cables from PV strings and batteries (if installed) to the terminal blocks, as shown below. 6. Mount the combiner box cover and secure it with four screws with a torque of 1.2 N*m.



The formula resulted in recommendation of two parallel 2x300 mm² aluminium DC cables from the PV string combiner box to the inverter. The cable length was also reviewed to ensure that the

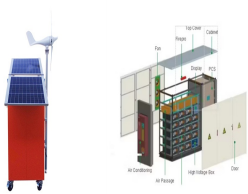


How Does Solar Connect to the Main Panel? Solar panels connect to the main panel or breaker box through wire that first passes through the charge controller and the inverter. Once the inverter converts the current from DC to AC, the energy from the panels can enter the main breaker box and supply power to appliances.



Inverter Cables: These cables connect the inverter to the battery bank, transferring the DC power from the batteries to the inverter. Inverter cables are usually similar in size to battery cables, typically 2-4/0 AWG, to handle the ???

PHOTOVOLTAIC DC CABLE CONNECTED TO THE INVERTER



Calculating the PV Cable Size. Each PV cable can only manage a certain amount of amperage and voltage. You will need different solar cables to connect the PV panels to the inverter, and then that main inverter to the batteries, then the batteries to the battery bank, or the inverter straight to the grid of the house or commercial property.



A system with a large inverter will cause large DC currents. If the DC system voltage is increased, the DC current will drop, and the cables can be thinner. Increase in voltage ??? cable can be thinner The preferred upper inverter power limits per system voltage are: - 12 V: up to 3 kVA - 24 V: up to 5 kVA - 48 V: 5kVA and up



Reversed polarity of DC output cables, when the combiner box's output cables are inverted, results in short-circuiting different combiner box components. Since the components have been combined, the short-circuit ???



The photovoltaic (PV) power generation system is mainly composed of large-area PV panels, direct current (DC) combiner boxes, DC distribution cabinets, PV inverters, alternating current (AC) distribution cabinets, grid connected transformers, and connecting cables.



However, to truly harness the potential of solar energy, connecting the solar panels to an inverter is essential. The inverter serves as the heart of the solar power system, converting the direct current (DC) electricity produced by the solar panels into alternating current (AC) electricity, which is suitable for powering homes and businesses.