

PHOTOVOLTAIC BRACKET WELD INSPECTION



When installing structural parts such as photovoltaic brackets, welding nails are used. For the stability of the entire device, the welding nails must be thoroughly inspected after welding. ???



Welding Inspection Qualifications & Testing Procedures 2020 Instructor: Jurandir Primo, PE PDH Online | PDH Center 5272 Meadow Estates Drive Fairfax, VA 22030-6658 Phone: 703-988-0088 the B& PV Code can be found at the links to the left. ???



The annual production capacity of AKCOME solar mounting system is 4G, which is in the forefront of China's PV mounting bracket industry. AKCOME has always paid attention to product quality management, and performs strict quality inspection for every link from raw materials incoming to processing and manufacturing and product delivery to ensure the quality stability, so the ???



PV panels mounted on roof Workers install residential rooftop solar panels. The solar array of a PV system can be mounted on rooftops, generally with a few inches gap and parallel to the surface of the roof. If the rooftop is horizontal, the array is mounted with each panel aligned at an angle. If the panels are planned to be mounted before the construction of the roof, the roof can ???



WELD INSPECTION TOOLS AND TECHNIQUES. Welding is a critical process in manufacturing & fabrication. Ensuring the right quality of welds is not only necessary for safety, but also for producing strong and reliable welding joints. In order to ensure that all welds are up to industry standards, weld inspection tools and techniques must be utilized

PHOTOVOLTAIC BRACKET WELD INSPECTION



Solar photovoltaic bracket is a special bracket designed for placing, installing and fixing solar panels in solar photovoltaic power generation systems. The general materials are aluminum alloy, carbon steel and stainless steel. The related products of the solar support system are made of carbon steel and stainless steel. The surface of the carbon steel is hot-dip galvanized and will ???



The Photovoltaic bracket angle code products produced by our company have complete specifications, are made by seiko, and have passed the inspection. We ensure the quality of the purchased bolts and accessories. tapping machine, bending machine, cold insert machine, forming machine, automatic lathe punching machine, automatic welding



This publication gives guidance on weld inspection for structural steelwork. It explains how techniques for weld inspection and testing are used to identify and characterise defects that can arise in structural steel components. It also explains the causes of such defects and measures that may be taken to avoid them. The guidance is intended

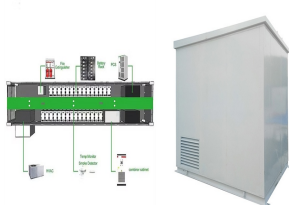


dustries, and visual inspection will certainly continue on the front line of that inspection effort. In the broad field of Quality Assurance, the control of welding operations and fabrication of process equipment encompasses many technical disciplines including engineering design, materials selection, welding processes, welding procedures, non-



Material Selection and Exquisite Craftsmanship - The PV brackets from CHIKO are made of rigorously selected materials, such as corrosion-resistant aluminum alloy, high-strength carbon steel, and premium stainless steel. Each material undergoes precise processing and surface treatment to adapt to various environmental conditions, ranging from

PHOTOVOLTAIC BRACKET WELD INSPECTION



Welding inspection plays a crucial role in ensuring the quality and safety of welded joints. The purpose of welding inspection is multifold and includes: Preventing potential failures: Welding inspection helps to detect any ???



Its main business includes various photovoltaic fixed ground mounting structure, distributed mounting structure, tracking photovoltaic mounting structure, building mounting structure, and distributed power station development, etc. It is one of the largest professional manufacturers of photovoltaic brackets in China and the Asia-Pacific region.



PV brackets can be divided into three types: fixed, tilt-adjustable, and auto-tracking type, and its connection method generally has two forms of welding and assembly. Among them, fixed-type bracket includes roof-type bracket, ground type bracket, and water type bracket. Photovoltaic Racking Daily Inspection and Maintenance Precautions



These brackets are welded fabrications and volumetric inspection of the welds was considered desirable to check for possible in-service degradation. The bracket design is shown in Figure 1 . It consists of a landing ???



Material of solar photovoltaic bracket. When installing the bracket, there is no need to weld it on site. According to the assembly drawing provided, the bolt can be placed in the corresponding bolt hole to complete the installation. Requirements of solar photovoltaic support.

PHOTOVOLTAIC BRACKET WELD INSPECTION



In Changji Hui Autonomous Prefecture, a PV bracket producer uses four production lines, which load raw materials, conduct weld connections, and do other procedures automatically. According to Xu Luhui, head of the bracket company, automatic production can save energy consumption by about 50 percent, and the annual production capacity of PV ???



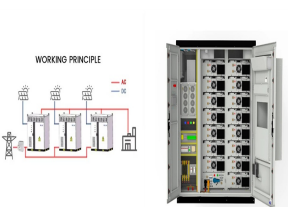
The present work refers to the welding inspection of the brackets of Atucha I Nuclear Power Plant's Pressure Vessel (RPV) using the wet fluorescent magnetic particles technique (MT). Due to limited access and high radiation levels in the inspection area, it was necessary to automate the testing and use non conventional magnetization techniques.



The Soprasolar Fix attachment system is designed for installing rigid, modular photovoltaic panel systems directly onto the waterproofing using a membrane to membranes installation technique. Panels are fixed to a rail framework that is raised above the roof surface on support feet.



welding inspection duties, as indicated in Clause 1.2.1 and 1.2.2 under qualified supervision, independently verified or Candidates who hold an International Welding Inspector Basic Level Diploma with two years" recent continuous experience in welding inspection duties, as indicated in Clause 1.2.1 and 1.2.2



Customers can choose different models of brackets according to the specific photovoltaic power station design to ensure that photovoltaic panels can capture sunlight at the best angle and improve power generation efficiency.

PHOTOVOLTAIC BRACKET WELD INSPECTION



Photovoltaic mounting system can be divided into fixed, tilt-adjustable and auto-tracking three categories, and their connection methods generally have two forms of welding and assembly. The fixed bracket can be ???



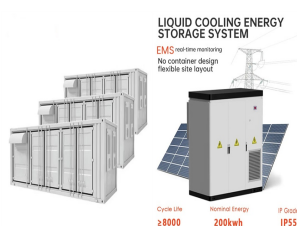
Single-axis tracking solar bracket and dual axis solar tracking bracket representative of the new solar bracket system, compared with the traditional fixed bracket (the same number of solar panels) which can greatly improve the ???



Use technology to capture every ray of sunshine! As the world's leading manufacturer and solution provider of photovoltaic brackets and BIPV systems, Shilden has been deeply involved in a segment in the middle reaches of the ???



A stitch weld or Intermittent weld consists of a weld symbol (e.g., a filet weld in the below example), weld size, length of the weld (e.g., 2 inches), and the pitch (6 inches in the below example). Stich Welding is Also called Skip welding and they are mainly used to control the welding distortion, especially in sheet metal welding.

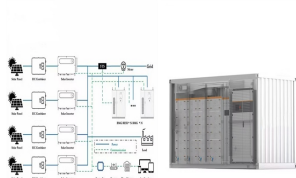


The installation selection of photovoltaic ground brackets is mainly based on factors such as the fixing method of the bracket, terrain requirements, material selection, and the weather resistance, strength, and stiffness of the bracket. First, there are many fixing methods, such as pile foundation method (direct burial method), concrete block weight method, pre-embedded method, ground ???

PHOTOVOLTAIC BRACKET WELD INSPECTION



SilverR-s-b series Three in one balcony solar bracket, one set of bracket meets three application scenarios: wall mounted, railing and flat. Quick installation, adjustable angle, no welding required, stable and reliable., this product comes from 3KM Power



If welding is occurring on your project, then item #2 in Table 1705.2.2 will apply, and welding inspector qualifications are detailed in Section 1704.2.2.1. Additionally, the inspector will check the welding procedures (recipe) to ensure compliance with the AWS D1.1 (Structural Welding Code).



Solar PV roof panels are a great way to utilise flat roof space. Producing 310 watt-peak per panel and installed to ensure roof system integrity. 01473 257671 Email Contact us Members Area. A full final inspection is completed by our site technician team before the guarantee is issued.