

# PHOTOVOLTAIC ENERGY STORAGE GRID CONNECTION



What makes a photovoltaic system a grid-connected system? Another very important aspect of photovoltaic installations that are grid-connected is the type of energy supplied into the network, whether reactive or active, which can change the type of power factor [11, 12]. The most efficient systems are those that can vary the power according to grid requirements.



What is photovoltaic & energy storage system construction scheme? In the design of the ???photovoltaic + energy storage??? system construction scheme studied, photovoltaic power generation system and energy storage system cooperate with each other to complete grid-connected power generation.



Can atmospheric conditions improve the performance of grid-connected photovoltaic systems? This paper proposes an innovative approach to improve the performance of grid-connected photovoltaic (PV) systems operating in environments with variable atmospheric conditions. The dynamic nature of atmospheric parameters poses challenges for traditional control methods, leading to reduced PV system efficiency and reliability.



Why is energy storage important in power grid demand peaking and valley filling? The simulation test also reveals the important role of energy storage unit in power grid demand peaking and valley filling, which has an important impact on balancing the instability of photovoltaic power generation and improving the system response ability.



Can grid-connected PV inverters improve utility grid stability? Grid-connected PV inverters have traditionally been thought as active power sources with an emphasis on maximizing power extraction from the PV modules. While maximizing power transfer remains a top priority, utility grid stability is now widely acknowledged to benefit from several auxiliary services that grid-connected PV inverters may offer.

# PHOTOVOLTAIC ENERGY STORAGE GRID CONNECTION



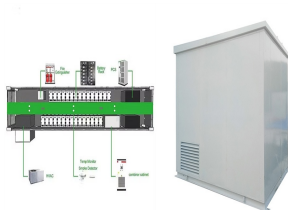
Are control strategies for photovoltaic (PV) Grid-Connected inverters accurate? However, these methods may require accurate modelling and may have higher implementation complexity. Emerging and future trends in control strategies for photovoltaic (PV) grid-connected inverters are driven by the need for increased efficiency, grid integration, flexibility, and sustainability.



Energy planning for a sustainable transition to a decarbonized generation scenario. Onur Elma, Suprava Chakraborty, in Sustainable Energy Planning in Smart Grids, 2024. 1.3.1.1 Grid-connected photovoltaic systems. Grid-connected PV systems are the most frequent because they are easier to construct and often less expensive than off-grid PV ???



Grid connected Photovoltaic (PV) plants with battery energy storage system, are being increasingly utilised worldwide for grid stability and sustainable electricity supplies. In this context, a comprehensive feasibility analysis of a grid connected photovoltaic plant with energy storage, is presented as a case study in India.



The technical and economic aspects of solar PV for grid-connected homes was investigated for Palestine, Brazil, and South Africa in Refs. [[20], [21], [22]], respectively. However, the above-mentioned review studies did not investigate integration of the battery storage for the PV systems. (PV) and battery energy storage (BES) for grid



Photovoltaic systems can be designed to provide DC and/or AC power service, can operate interconnected with or independent of the utility grid, and can be connected with other energy sources and energy storage systems. Grid-connected or utility-interactive PV systems are designed to operate in parallel with and interconnected with the electric

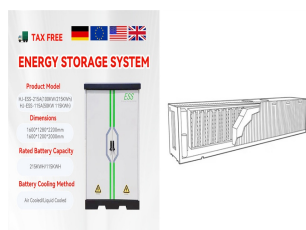
# PHOTOVOLTAIC ENERGY STORAGE GRID CONNECTION



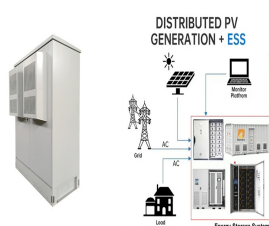
In this case, the PV and storage is coupled on the DC side of a shared inverter. The inverter used is a bi-directional inverter that facilitates the storage to charge from the grid as well as from the PV. DC Coupled (PV-Only Charging) This configuration is similar to DC coupled, but the storage can be charged using PV only, not from grid



Maximum power extraction from the PV module is achieved through the use of appropriate MPPT algorithms, and the design and research of various configurations of a three-phase NPC inverter coupled to three-phase solar PV with MPPT and battery storage in a grid-connected system allow for regulation of current on the AC side and of the charging



In the present study, a grid-connected hybrid power system to manage energy production, grid interaction, and energy storage is installed and experimentally investigated. The PV-battery system is connected to the grid and employs an optimal EMS algorithm, which has been validated using both virtual simulation and lab experiments to ensure



The energy storage devices improve solar energy contribution to the electricity supply even when the unavailability of solar energy. It also helps to smooth out the fluctuations in how solar energy transmits on the grid network. These fluctuations are attributable to changes in the quantity of sunlight that shines onto PV panels.



In the context of the world's energy structure continuously transforming, the installed capacity of new energy, such as wind and solar energy, is steadily increasing [7], [8]. The connection of renewable energy to the grid is crucial for reducing fossil fuel consumption, decreasing pollutant emissions, and achieving sustainable development.

# PHOTOVOLTAIC ENERGY STORAGE GRID CONNECTION



For example, residential grid-connected PV systems are rated less than 20 kW, commercial systems are rated from 20 kW to 1MW, and utility energy-storage systems are rated at more than 1MW. Figure 2. A common configuration for a PV system is a grid-connected PV system without battery backup. Off-Grid (Stand-Alone) PV Systems. Off-grid (stand



The control strategy of the grid connected PV inverter operates PV at MPP and ensures grid side current control to determine the amount of power delivered. These objectives have been ???



A distributed PVB system is composed of photovoltaic systems, battery energy storage systems (especially Lithium-ion batteries with high energy density and long cycle lifetime [35]), load demand, grid connection and other auxiliary systems [36], as is shown in Fig. 1. There are two main busbars for the whole system, direct current (DC) and



With the increasing depletion of traditional energy sources, environmental pollution and energy crises intensifying worldwide, the accelerating development of new energy sources has become an inevitable trend [1, 2] recent years, the large-scale grid connection of solar photovoltaic power generation system makes the power system gradually show the trend ???

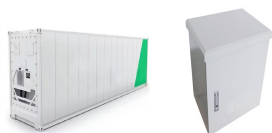


In the paper, the use energy storage in grid-connected PV plants is introduced, discussed and tested by experimental measurements. Energy storage, operated by means of batteries installed in a distributed manner, can improve the energy production of a conventional grid-connected PV plants, especially in presence of mismatching conditions, so

# PHOTOVOLTAIC ENERGY STORAGE GRID CONNECTION



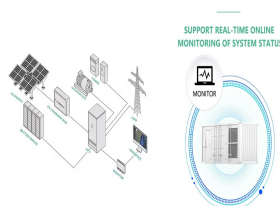
High penetration of renewable energy resources in the power system results in various new challenges for power system operators. One of the promising solutions to sustain the quality and reliability of the power system is the integration of energy storage systems (ESSs). This article investigates the current and emerging trends and technologies for grid-connected ESSs. ???



Semantic Scholar extracted view of "Energy storage and demand response as hybrid mitigation technique for photovoltaic grid connection: Challenges and future trends" by M. Maghami et al. Skip to search form Skip to main content Skip to account menu. Semantic Scholar's Logo. Search 222,173,890 papers from all fields of science



Coordinated control technology attracts increasing attention to the photovoltaic???battery energy storage (PV-BES) systems for the grid-forming (GFM) operation. However, there is an absence of a unified perspective that reviews the coordinated GFM control for PV-BES systems based on different system configurations. This paper aims to fill the gap ???



The continuous surge in interest in energy storage, the persistence of meager global fossil fuel costs, The requirements of the grid-connected solar power system and their different characteristics are analyzed in section 3 of the manuscript. Moreover, the various configurations of solar PV systems and their respective classifications are



The energy management for the grid connected system was performed by the dynamic switching process. The optimal selection of number of solar panels, battery size has also been presented. The proposed algorithm helps in effectively deriving the potential benefits of grid connected rooftop solar system with battery storage.

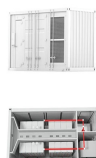
# PHOTOVOLTAIC ENERGY STORAGE GRID CONNECTION



An AC-linked large scale wind/photovoltaic (PV)/energy storage (ES) hybrid energy conversion system for grid-connected application was proposed in this paper. Wind energy conversion system (WECS) and PV generation system are ???



The authors did a survey on categorizing the grid-connected and stand-alone PV systems, energy policy, a number of technologies implemented in PV cells, maximum power point tracking (MPPT), energy management, energy optimization, issues related to storage of energy in PV systems, hybrid PV systems, environmental and economic concerns, operation



Energy storage is crucial for photovoltaic grid connection due to intermittent solar generation, ensuring consistent energy supply, mitigating demand fluctuations, and enhancing grid stability. 2. The required energy storage capacity depends on various factors such as geographical location, solar panel efficiency, and energy consumption patterns.



Their efforts accelerate the need for large-scale renewable energy resources (RER) integration into existing electricity grids. The intermittent nature of the dominant RER, e.g., solar photovoltaic (PV) and wind systems, poses operational and technical challenges in their effective integration by hampering network reliability and stability.



Additionally, exploring the integration of energy storage solutions, such as batteries or supercapacitors, into grid-connected PV systems presents a promising avenue for enhancing system stability



# PHOTOVOLTAIC ENERGY STORAGE GRID CONNECTION



The integration of photovoltaic (PV) and wind energy generation into the grid presents several challenges, including the generation of intermittent energy, problems with grid integration, a load



2 ? This article deals with the modeling and control of a solid-state transformer (SST) based on a dual active bridge (DAB) and modular multilevel converter (MMC) for integrating ???



This may change, as government incentives for distributed energy storage are implemented and investments in storage solutions gradually become economically viable for small systems. [5] [6] A grid-connected photovoltaic system, or grid-connected PV system is an electricity generating solar PV power system that is connected to the utility grid.



See the IEEE Standards Coordinating Committee on Fuel Cells, Photovoltaics, Dispersed Generation, and Energy Storage for more information. Underwriters Laboratories (UL) has developed UL 1741 to certify inverters, converters, charge controllers, and output controllers for power-producing stand-alone and grid-connected renewable energy systems.



Penetration rate of grid-connected photovoltaic (PV) generation to the existing utility grid is rapidly increasing over the years. Since the power generated from PV systems fluctuates according to the weather condition, e.g., cloud passing, this can significantly disturb the stability of a weak utility grid. The integration of energy storage devices and its ramp-rate control technique are

# PHOTOVOLTAIC ENERGY STORAGE GRID CONNECTION



sizing) a Battery Energy Storage System (BESS) connected to a grid-connected PV system. It provides information on the sizing of a BESS and PV array for the following system functions: ??? BESS as backup ??? Offsetting peak loads ??? Zero export The battery in the BESS is charged either from the PV system or the grid and discharged to the



For the PV-storage grid-connected system based on virtual synchronous generators, the existing control strategy has unclear function allocation, fluctuations in photovoltaic inverter output power, and high requirements for coordinated control of PV arrays, energy storage units, and photovoltaic inverters, which make the control strategy more



Photovoltaic generation will continue to grow with urbanization, electrification, digitalization, and de-carbonization. However, PV generation is variable and intermittent, non-inertia and asynchronous with the demand, posing significant challenges in generation dispatch, strategic spinning reserve and power system stability. Battery Energy Storage Systems (BESS) are key ???