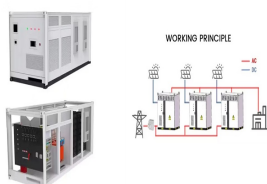


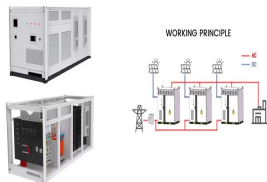
PHOTOVOLTAIC ENERGY STORAGE POWER STATION STATE GRID SHORTLISTED



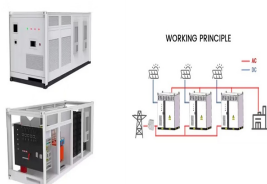
What is a 50 MW PV + energy storage system? This study builds a 50 MW ???PV +energy storage??? power generation system based on PVsyst software. A detailed design scheme of the system architecture and energy storage capacity is proposed, which is applied to the design and optimization of the electrochemical energy storage system of photovoltaic power station.



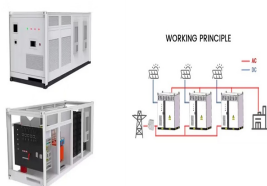
What is photovoltaic & energy storage system construction scheme? In the design of the ???photovoltaic + energy storage??? system construction scheme studied, photovoltaic power generation system and energy storage system cooperate with each other to complete grid-connected power generation.



What is integrated photovoltaic energy storage system? The main structure of the integrated Photovoltaic energy storage system is to connect the photovoltaic power station and the energy storage system as a whole, make the whole system work together through a certain control strategy, achieve the effect that cannot be achieved by a single system, and output the generated electricity to the power grid.



How to estimate the cost of a photovoltaic & energy storage system? When estimating the cost of the ???photovoltaic + energy storage??? system in this project, since the construction of the power station is based on the original site of the existing thermal power unit, it is necessary to consider the impact of depreciation, site, labor, tax and other relevant parameters on the actual cost.



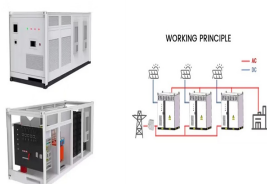
What is the energy storage capacity of a photovoltaic system? Specifically, the energy storage power is 11.18 kW, the energy storage capacity is 13.01 kWh, the installed photovoltaic power is 2789.3 kW, the annual photovoltaic power generation hours are 2552.3 h, and the daily electricity purchase cost of the PV-storage combined system is 11.77 \$.

3.3.2. Analysis of the influence of income type on economy

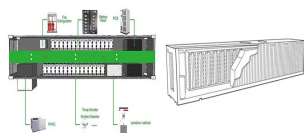
PHOTOVOLTAIC ENERGY STORAGE POWER STATION STATE GRID SHORTLISTED



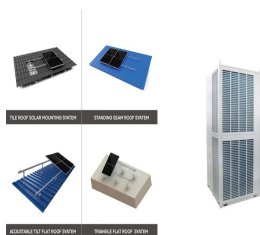
What is the charging time of a photovoltaic power station? For the characteristics of photovoltaic power generation at noon, the charging time of energy storage power station is 03:30 to 05:30 and 13:30 to 16:30, respectively. This results in the variation of the charging station's energy storage capacity as stated in Equation (15) and the constraint as displayed in (16)??? (20).



Building upon the analysis of the role of configuration of energy storage on the new energy side, this paper proposes an operational mode for active peak regulation "photovoltaic + energy ???



The installed capacity of the sub-station of the photovoltaic power station is 12.5 MW, and the load is about 10% of the installed capacity of the sub-station of the photovoltaic power station, and the highest temperature of the day was 21 °C and the lowest temperature was 11 °C. It was cloudy with northwest wind class 2.



Previously, State Grid Yingda publicly stated that based on the characteristics of safe use, long service life, low cost throughout the entire life cycle, and independent output power and energy storage capacity of all vanadium flow batteries, State Grid Yingda is conducting in-depth research and practice on commercial operation modes, promoting all vanadium flow energy storage ???



On August 27, 2020, the Huaneng Mengcheng wind power 40MW/40MWh energy storage project was approved for grid connection by State Grid Anhui Electric Power Co., LTD. Project engineering, procurement, and construction (EPC) was provided by Nanjing NR Electric Co., Ltd., while the project's container e

PHOTOVOLTAIC ENERGY STORAGE

POWER STATION STATE GRID

SHORTLISTED



The battery energy storage station (BESS) is the current and typical means of smoothing wind- or solar-power generation fluctuations. Such BESS-based hybrid power systems require a suitable control strategy that can effectively regulate power output levels and battery state of charge (SOC). This paper presents the results of a wind/photovoltaic (PV)/BESS ???



The coupled photovoltaic-energy storage-charging station (PV-ES-CS) is an important approach of promoting the transition from fossil energy consumption to low-carbon energy use. However, the integrated charging station is underdeveloped. One of the key reasons for this is that there lacks the evaluation of its economic and environmental benefits.



This study builds a 50 MW "PV + energy storage" power generation system based on PVsyst software. A detailed design scheme of the system architecture and energy storage capacity is proposed, which is applied to the design and optimization of the electrochemical energy storage system of photovoltaic power station.



Hybrid energy storage systems (HESS) are an effective way to improve the output stability for a large-scale photovoltaic (PV) power generation systems. This paper presents a sizing method for HESS-equipped large-scale centralized PV power stations. The method consists of two parts: determining the power capacity by a statistical method considering the ???



This paper proposes a power smoothing strategy for a 1-MW grid-connected solar photovoltaic (PV) power plant. A hybrid energy storage system (HESS) composed of a vanadium redox battery and a

PHOTOVOLTAIC ENERGY STORAGE

POWER STATION STATE GRID

SHORTLISTED



PDF | On Dec 8, 2021, Xiaolei Cheng and others published Coordinated Control Strategy for Photovoltaic Power Plant with Battery Energy Storage System | Find, read and cite all the research you



The reservoir of energy equipment is integrated into the pre-existing power grid to control the storage system to store and release energy according to the change in load and PV plant output. In this paper, three ???



The auction mechanism allows users to purchase energy storage resources including capacity, energy, charging power, and discharging power from battery energy storage operators. Sun et al. [108] based on a call auction method with greater liquidity and transparency, which allows all users receive the same price for surplus electricity traded at the same time.



The principle for calculating distributed PV power generation is shown in Formula (6):
$$P_{V,t,d,y} = a \cdot R_{A,t,d,y} \cdot \eta_1 \cdot \eta_2$$
 where a represents the PV installation capacity of each charging station, $R_{A,t,d,y}$ denotes the solar radiation per hour, η_1 is the photoelectric conversion efficiency of the PV panels, and η_2 is the conversion coefficient between the ???



1 Introduction. Nowadays, more and more PV generation systems have been connected to the power grid. Most of the countries are committed to increase the use of renewable energy, and the installed capacity ???

PHOTOVOLTAIC ENERGY STORAGE POWER STATION STATE GRID SHORTLISTED



If Eq. 4 is satisfied, the data value at the last moment is recorded as the feature data, and it returns to step 2; otherwise, it returns to Step 3.. In this study, the raw grid-connected photovoltaic power data at 5 min intervals over one-day-ahead 24 h is selected. The SDT algorithm is used to extract the feature data, and the grid-connected photovoltaic power ???



The integrated energy storage unit can not only adjust the solar power flow to fit the building demand and enhance the energy autonomy, but also regulate the frequency of utility grid for on-grid renewable energy systems [6]. Therefore, it is significant to investigate the integration of various electrical energy storage (EES) technologies with photovoltaic (PV) ???



Photovoltaic-storage integrated systems, which combine distributed photovoltaics with energy storage, play a crucial role in distributed energy systems. Evaluating the health status of photovoltaic-storage integrated energy stations in a reasonable manner is essential for enhancing their safety and stability. To achieve an accurate and continuous ???



Large-scale solar is a non-reversible trend in the energy mix of Malaysia. Due to the mismatch between the peak of solar energy generation and the peak demand, energy storage projects are essential and crucial to ???



To overcome these problems, the PV grid-tied system consisted of 8 kW PV array with energy storage system is designed, and in this system, the battery components can be coupled with the power grid

PHOTOVOLTAIC ENERGY STORAGE

POWER STATION STATE GRID

SHORTLISTED



a typical moving cloud day output of a 5 MWp solar power-plant.

Keywords??? Battery Energy Storage System (BESS), Smoothing, State of Charge (SOC), Moving Window, Solar Photovoltaic, Renewable Energy, Intermittency I. INTRODUCTION With increasing penetration of renewable energy the grid is becoming increasingly weather dependent. The variable



GFM PVSG Power Plants. A PVSG power plant requires the integration of an energy storage system with the PV. The energy storage can be connected to the PV inverter on the AC or DC side respectively as shown in Fig.1. For the AC-coupled PVSG system [2], the energy storage device is connected to the AC side by a DC-DC converter and a DC-AC inverter.



The proposed hybrid charging station integrates solar power and battery energy storage to provide uninterrupted power for EVs, reducing reliance on fossil fuels and minimizing grid overload.



LPO Announces Conditional Commitment to Sunwealth to Deploy Solar PV and Battery Energy Storage, Creating Wide-Scale Virtual Power Plant Blog On November 25, 2024, LPO announced a conditional commitment of up to \$289.7 million to Sunwealth to help finance Project Polo, a deployment of up to 1,000 solar photovoltaic (PV) systems and battery energy storage ???



Large-scale grid-connection of photovoltaic (PV) without active support capability will lead to a significant decrease in system inertia and damping capacity (Zeng et al., 2020). For example, in Hami, Xinjiang, China, the installed capacity of new energy has exceeded 30 % of the system capacity, which has led to significant variations in the power grid frequency as well as ???

PHOTOVOLTAIC ENERGY STORAGE POWER STATION STATE GRID SHORTLISTED



With the development of the photovoltaic industry, the use of solar energy to generate low-cost electricity is gradually being realized. However, electricity prices in the power grid fluctuate throughout the day. Therefore, it is necessary to integrate photovoltaic and energy storage systems as a valuable supplement for bus charging stations, which can reduce ???



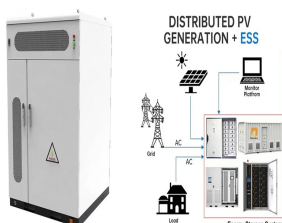
The main structure of the integrated Photovoltaic energy storage system is to connect the photovoltaic power station and the energy storage system as a whole, make the whole system work together through a certain control strategy, achieve the effect that cannot be achieved by a single system, and output the generated electricity to the power grid.



The battery energy storage station (BESS) is the current and typical means of smoothing wind- or solar-power generation fluctuations. Such BESS-based hybrid power systems require a suitable control strategy that can effectively regulate power output levels and battery state of charge (SOC). This paper presents the results of a wind/photovoltaic (PV)/BESS ???



In the review [14], the focus is put on the intermittence issue of roof-top PV power plants and the use of energy storage systems for avoiding reverse power flows. In [21], a study of a hybrid PV storage power plant for power dispatching is performed. Particularly, the objective is to reduce the power unbalances between the PV power scheduled



On November 16, Fujian GW-level Ningde Xiapu Energy Storage Power Station (Phase I) of State Grid Times successfully transmitted power. The project is mainly invested by State Grid Integrated Energy and CATL, which is the largest single grid-side standalone station-type electrochemical energy storage power station in China so far.

PHOTOVOLTAIC ENERGY STORAGE POWER STATION STATE GRID SHORTLISTED



Over the past decade, global installed capacity of solar photovoltaic (PV) has dramatically increased as part of a shift from fossil fuels towards reliable, clean, efficient and sustainable fuels (Kousksou et al., 2014, Santoyo-Castelazo and Azapagic, 2014). PV technology integrated with energy storage is necessary to store excess PV power generated for later use ???



To quantify the ability to charge stations to respond to the grid per unit of time, the concept of schedulable capacity (SC) is introduced. The SC of the station consists of the SC of V2G, the SC of the centralized energy ???