

PHOTOVOLTAIC INVERTER TOTAL



What is a solar inverter? A solar inverter or photovoltaic (PV) inverter is a type of power inverter which converts the variable direct current (DC) output of a photovoltaic solar panel into a utility frequency alternating current (AC) that can be fed into a commercial electrical grid or used by a local, off-grid electrical network.



What is a PV inverter? As clearly pointed out, the PV inverter stands for the most critical part of the entire PV system. Research efforts are now concerned with the enhancement of inverter life span and reliability. Improving the power efficiency target is already an open research topic, as well as power quality.



How many solar inverters do I Need? You need at least one solar inverter. Depending on the size and type of solar panel array you choose, you may need more than one. Inverters convert the solar power harvested by photovoltaic modules like solar panels into usable household electricity. Some system topologies utilise storage inverters in addition to solar inverters.



What is the conversion efficiency of a solar inverter? As of 2019, conversion efficiency for state-of-the-art solar converters reached more than 98 percent. While string inverters are used in residential to medium-sized commercial PV systems, central inverters cover the large commercial and utility-scale market.



What is the average model of a single-phase PV inverter? Averaged model of a single-phase PV inverter The average model is implemented in PLECS. The model uses the same parameters as the homegrown inverter except for the input voltage source, which is replaced with the PV current source. The model is designed for the same switching frequency, DC-link voltage and AC grid voltage.

PHOTOVOLTAIC INVERTER TOTAL



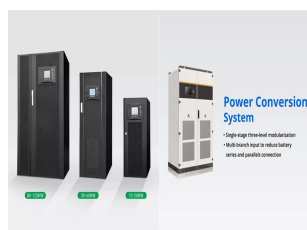
How is the lifetime of a PV inverter predicted? Up to a certain point in time, the entire lifetime of a PV inverter was predicted based on the failure rates of individual components and handbooks provided by the manufacturers. In recent years, the prediction of the reliability and lifetime of power converters has been done through physics-of-failure assessments.



Due to the traditional grid-connected current control method of single Proportional Integral (PI) and Repetitive Control (RC) strategies, the photovoltaic inverter output current will have a distortion problem, which can not only maintain the stability of the whole photovoltaic system, but also the current quality of the photovoltaic inverter grid-connected system is a?



The total extracted power from PV strings is reduced, while the grid-connected inverter injects reactive power to the grid during this condition. One of the PV strings operates at MPP, while another PV string is open a?



A solar power inverter's primary purpose is to transform the direct current (DC) electricity generated by solar panels into usable alternating current (AC) electricity for your home. inverters will typically make up around 10% of your total project costs. String inverter prices usually range between \$1,000-\$2,000 or slightly more. Power



The use of photovoltaic (PV) systems has increased in recent years due to the high demand for clean energy sources. PV systems can utilize abundant and free energy from the sun, which is a

PHOTOVOLTAIC INVERTER TOTAL



This refers to the maximum DC power that the inverter can handle from the solar panel strings, which is the total power of the solar modules. According to the specification sheet, the MID_15-25KTL3-X has a maximum input power of 22.5KW. Photovoltaic inverters that are compact, lightweight, and easy to install are highly favored by customers



On the first day of the conference, PVBL's annual ranking of the Top 20 Global Photovoltaic Inverter Brands was announced. Preferential policies promoted the inverter market growth in 2023. Most of the major inverter companies won a large amount of orders and expanded their capacity with high shipment volume.



The active power control of photovoltaic (PV) inverters without energy storage can flatten the fluctuating power and support the voltage amplitude and frequency of the grid. method; (2) move the PV voltage to the stable region. In the second case, if the power shortage is limited to a single inverter but the total output power of all



This multi-level inverter (MLI) is shown to have less total harmonic distortion (THD) and stress on switches compared to a two-level inverter. The PV inverters are expected to increase at a 4.64 rate by 2021 a?|



A prototype of the each PV inverter topology is implemented to verify the efficiency and leakage current. The prototype is divided into two parts: the DSP processor-based control circuit and the power circuit. The overall a?|



For accurate characterisation of PV inverters, not only DC-AC-conversion efficiency, but also MPP-tracking behaviour must be considered. The goal of this contribution is at first to demonstrate again the voltage dependency of DC-AC conversion efficiency $\eta = P_{AC}/P_{DC}$ and encourage

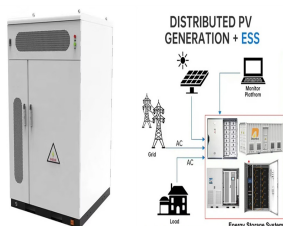
PHOTOVOLTAIC INVERTER TOTAL

manufacturers to supply sufficient data about it. Then MPP-tracking efficiency a?

PHOTOVOLTAIC INVERTER TOTAL



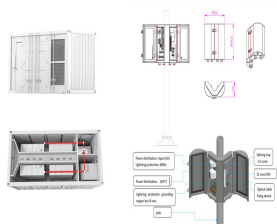
Before selecting an appropriate inverter size, there are several key factors to consider, including the total system size (DC wattage of all solar panels), expected energy consumption (daily and peak usage in kW), future expansion a?|



Description. Photovoltaic Inverter, also known as power regulator and power regulator, is an indispensable part of the photovoltaic system. The global Photovoltaic Inverter market was valued at US\$ 5776.2 million in 2023 and is anticipated to reach US\$ 5889.2 million by 2030, witnessing a CAGR of 0.2% during the forecast period 2024-2030.



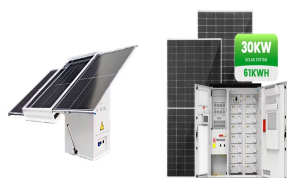
Let us look at the benefits of employing photovoltaic inverters in solar power systems. Photovoltaic inverters are classified into three types: string inverters, microinverters, and grid-tied inverters resulting in a "string" that converts the total DC electricity to AC. However, shadowing or soiling on a single panel can have an impact



The solar inverter is an important part of a solar energy system, responsible for converting the DC current generated by panels into usable AC electricity for our households and businesses. To ensure the inverter operates properly and powers the essential devices, it is crucial to understand the solar inverter datasheet explained below.



The single inverter in the Corbett Hall PV System simulated by the team is fed by 12 strings of 16 PV modules. By referring to the specification sheet of the selected solar module, [], the nominal, maximum, and worst case scenario specifications for the input of the solar array into the inverter were calculated utilizing the data for the CS32-420 PB-AG Module.



A photovoltaic system, also called a PV system or solar power system, is an electric power system designed to supply usable solar power by means of photovoltaics consists of an arrangement of several components, including solar panels to absorb and convert sunlight into electricity, a

PHOTOVOLTAIC INVERTER TOTAL

solar inverter to convert the output from direct to alternating current, as well as a?

PHOTOVOLTAIC INVERTER TOTAL



in the efficiency of a photovoltaic (PV) inverters causes a substantial variation in their cost. This is understandable because a PV inverter is expected to be in service for a good number of years a?|



The Renewable Energy Policy Network for the Twenty-First Century (REN21) is the world's only worldwide renewable energy network, bringing together scientists, governments, non-governmental organizations, and industry [[5], [6], [7]]. Solar PV enjoyed again another record-breaking year, with new capacity increasing of 37 % in 2022 [7]. According to data reported in a?|



In single-phase PV applications, DCa??AC converter requires a significant energy buffer to produce the AC output waveform from a DC source []. Aluminium electrolytic capacitors are widely employed for managing the a?|



The optimum sizing ratio (R_s) between PV array and inverter were found equal to 0.928, 0.904, and 0.871 for 1 MW, 1.5 MW, and more than 2 MW, respectively, whereas the total power losses reached 8

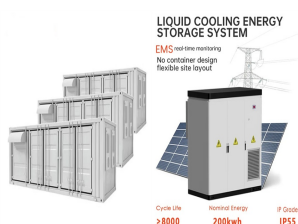


The use of photovoltaic (PV) systems has increased in recent years due to the high demand for clean energy sources. PV systems can utilize abundant and free energy from the sun, which is a substantial advantage. However, compared with other renewable technologies, the PV system still faces major obstacles such as high cost and low efficiency.

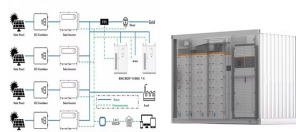
PHOTOVOLTAIC INVERTER TOTAL



Easily calculate solar energy potential and visualize it with PVGIS mapping tool. Empower your solar projects with accurate data insights and precision. you need to enter the total installation cost of the photovoltaic system, including a?|



This document is intended for owners, or potential owners, of Solar PV and wind installations with a Declared Net Capacity (DNC) over 50kW up to a Total Installed Capacity (TIC) of 5MW, and all anaerobic digestion and hydro installations up to a TIC a?|



This leads to increasing number of utility-scale PV inverters (UPVIs) being connected to the grid both at transmission and distribution networks. W. Xiao, S. Finney, and W. Cao, "DC-link voltage control strategy for reducing capacitance and total harmonic distortion in single-phase grid-connected photovoltaic inverters," IET Power



Photovoltaic systems a?? commonly known as solar power a?? are driving the shift from fossil fuels and bringing us closer to having abundant, green energy. Innovative and reliable power semiconductors and inverter technologies ensure that harnessing solar power is more convenient, efficient, and attractive. Listen now



Solar PV comprised almost 45% of total global electricity generation investment in 2022, triple the spending on all fossil fuel technologies collectively. Investment in PV is expected to grow further in the coming years thanks to ambitious a?|



Yes, all photovoltaic solar power systems require at least one solar inverter. Solar panels harvest photons from sunlight to produce direct current (DC) electricity. Virtually all home appliances and personal devices a?? a?|

PHOTOVOLTAIC INVERTER TOTAL



This article introduces the architecture and types of inverters used in photovoltaic applications. Standalone and Grid-Connected Inverters. Inverters used in photovoltaic applications are historically divided into two a?|



An inverter is a critical part of any Solar Energy system. So, if one panel is in the shade, it will bring down the total power output of your system. the Growatt MOD generation of photovoltaic inverters is percent for smaller, indoor installations. They cool themselves naturally, using heatsinks, so no fan to generate low-level noise.