

PHOTOVOLTAIC PANEL 505W PARAMETERS



What are solar panel specifications? Key Takeaways of Solar Panel Specifications Solar panel specifications include factors such as power output, efficiency, voltage, current, and temperature coefficient, which determine the performance and suitability of the panel for specific applications.



What should you consider when evaluating solar panels? Key specifications to consider when evaluating solar panels are the wattage or power rating, efficiency percentage, operating voltage, current output, and the temperature coefficient that indicates how the panel's performance is affected by temperature changes.



What is the maximum power a solar panel can produce? The NOCT is 45°C ± 2°C. There is no limit. Reading the graph, $I = 1.2 \text{ A}$ and $V = 37 \text{ V}$. The maximum power is therefore approximately 44 W. The coefficient is $-0.25\%/^{\circ}\text{C}$ for $T > 25^{\circ}\text{C}$. The output drops $-0.25\%/^{\circ}\text{C} \times 25^{\circ}\text{C} = -6.25\%$ Key Takeaways of Solar Panel Specifications



What is an example of a solar module datasheet? An example of a solar module datasheet composed of wafer-type PV cells is shown in Figure 1. Notice that the data sheet is divided into several sections: electrical data, mechanical data, I-V curve, tested operating conditions, warranties and certifications, and mechanical dimensions.



Q-SUN Anhui Co., Ltd Solar Panel Series QNHT-2 N-type 485-505W. Detailed profile including pictures, certification details and manufacturer PDF Solar Panel Directory; QNHT-2 N-type 485-505W If you need more specific technical parameters or product details, visit Q-Sun Solar's official website or consult us in chat directly!



The SunPower Performance 6 505 Watt Silver Bifacial photovoltaic module is made with Shingled technology, a shingle-like connection of cells, which strongly distinguishes Performance 6 photovoltaic panels in the photovoltaic market. This innovative solution provides a higher level of

PHOTOVOLTAIC PANEL 505W PARAMETERS

reliability compared to modules with front contact. Performance 6 series products achieve ???

PHOTOVOLTAIC PANEL 505W PARAMETERS



The Q-Sun Solar Onyx Series is renowned for its full-black panels and modern design, specifically crafted for residential photovoltaic markets with high aesthetic and performance demands. The Onyx Series panels feature a pure black ???



Solar Panel 485-505W PV Module. Uniform Appearance: The surface of monocrystalline silicon is relatively smooth and uniform, giving the module a neat and aesthetically pleasing appearance. ELECTRICAL PARAMETERS. Related Products . 620w-640w solar panel N-TOPCon single-crystal silicon. Transparent photovoltaic glass modules. High Performance



LONGi Hi-MO 5 high-efficiency PV modules are widely used from alpine grasslands to desert wastelands, and from ponds and vegetable beds to residential dwellings, with its advantages of "higher power, lower degradation and higher reliability", click to learn more. Optimized Electrical Parameters . The working current is about 13A, which is



WSM-50SHP485-505W Solar Panel. Product main features High conversion efficiency: MBB???half piece???smart welding; Parameters Table. Component model WSM-50SHP 485~505W; Test conditions: STC/NOCT: STC/NOCT: STC/NOCT: STC/NOCT: What is a solar panel? Solar panel (or solar module) is a device which consists of polycrystalline



Related Post: A Complete Guide About Solar Panel Installation. Step by Step Procedure with Calculation & Diagrams. Solar Cell Parameters. The conversion of sunlight into electricity is determined by various parameters of a solar cell. To ???

PHOTOVOLTAIC PANEL 505W PARAMETERS



Morego Solar Panel, find quality Morego Solar Panel products, Morego Solar Panel Manufacturers, Morego Solar Panel Suppliers and Exporters at Moregosolar. Genuine Guarantee | Bulk Price | Delivery Within 7 Days | After-sales Guarantee Moreover, we promise that all product parameters are true and not overstated,



The JA SOLAR 505W JAM66S30 photovoltaic panel with a black frame is a unique 505W module with a 25-year linear output power warranty. Skip to content. Wholesale photovoltaic heat pump air conditioning. Cikowice 174, 32-700 Bochnia +48 693 706 651; biuro@pv-met.pl ;



We're well-known as one of the leading sf-m18 g132(490w-505w) mono perc half cut bifacial solar panel manufacturers and suppliers in China. Please rest assured to wholesale cheap sf-m18 g132(490w-505w) mono perc half cut bifacial solar panel from our factory. For custom service, contact us now.



Panel fotowoltaiczny JA SOLAR 505W JAM66S30 z czarn?? ram?? to wyj??tkowy modu?? o mocy 505W z 25 letni?? liniow?? gwarancj?? mocy wyj??ciowej. PV-MET jest producentem aluminiowych system??w monta? 1/4 owych do fotowoltaiki. Nasza hurtownia oferuje panele fotowoltaiczne, pompy ciep??a, klimatyzacje oraz konstrukcje gruntowe.



The monocrystalline photovoltaic panel from JA Solar is characterized by high efficiency and durability, made using half-cell technology. The half-cell technology is characterized by lower internal resistance and power losses that are 1/4 lower compared to panels based on the classic construction (full cells). Additionally, panels made using half-cell technology, apart from ???

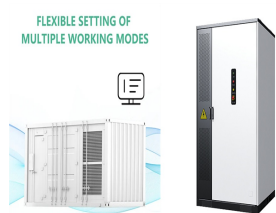
PHOTOVOLTAIC PANEL 505W PARAMETERS



Abstract: In different photovoltaic PV applications, it is very important to model the PV cell. However, the model parameters are usually unavailable in the datasheet provided by the manufacturers and they change due to degradation. This paper presents a method for identifying the optimal parameters of a PV cell.



JA Solar 505W Mono PERC Half-Cell MBB Traceable Silver Frame MC4 Connectors. JA Solar 505-Watt Mono Solar Panel quantity Datasheets Reviews (0) Description JA Solar 505-Watt Mono Solar Panel for Sale. Key Specifications: Rating: 505W; Efficiency: 21.3%; Width: 1,134mm; Height: 2,093mm; Model: JA Solar 505W Mono PERC Half-Cell MBB Traceable



The most important solar panel specifications include the short-circuit current, the open-circuit voltage, the output voltage, current, and rated power at 1,000 W/m² solar radiation, all measured under STC. Solar modules must also meet ???



The main performance parameters of solar panels include short-circuit current (ISC), open-circuit voltage (VOC), peak power (PM), current and voltage at maximum power (Imp and Vmp), efficiency, and fill factor (FF). Solar panel warranties typically cover two aspects: Product warranty: Covers defects in materials or workmanship, typically



JA Solar 505W Mono PERC Half-Cell MBB Silver Frame Solar Panel has its 11Bus-bar half-cell configuration can reach up to a incredible power of JA Solar 505W. This module offers better temperature-dependant performance and enhanced tolerance for mechanical loading. More benefits of this module range. Higher power output; Less shading

PHOTOVOLTAIC PANEL 505W PARAMETERS



The Longi LR5-66HPH HIMO5 505W solar panel boasts an impressive power output of 505W, making it one of the most powerful solar panels available in the market. With its high efficiency monocrystalline cells, this solar panel can efficiently convert sunlight into electricity, allowing you to harness the power of the sun and reduce your reliance on conventional energy ???



Bifacial Solar Panels 505W - TrinaSolar Vertex TSM-DE18M 480-505W
TrinaSolar's Vertex bifacial solar panels with a power output of 480-505W offer a cutting-edge solution for harnessing solar energy efficiently. These high ???



This paper proposes a new approach based on Lambert W-function to extract the electrical parameters of photovoltaic (PV) panels. This approach can extract the optimal electrical characteristics of



Introducing the LONGi 505W Monofacial Solar Panel with 1400mm cables, a cutting-edge solution for efficient solar energy generation. Featuring 132 cells and Hi-MO 5m technology, it delivers superior power output and reduced hot spot ???



Basic Parameters Detail Parameters. Supplier Half Cut 500W 505W 510W Mono PERC Solar Panel. Share: Superior Efficiency. With cutting-edge MBB & Half-cut Technology, these modules achieve high conversion efficiency of up to 21.48%, maximizing energy output per square meter. Optimized Design.

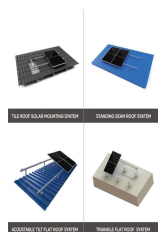
PHOTOVOLTAIC PANEL 505W PARAMETERS



Panel fotowoltaiczny JA SOLAR 505 JAM66S30-HC MR BF ????,?
Skorzystaj z Szerokiej Oferty Produktów w Niskich Cenach ?? Rabaty dla Instalatorów ?? Pomoż 1/4 emy w wyborze - Sprawdź?! czy warto na nie postawić w tworzonej przez siebie instalacji PV? Moduły fotowoltaiczne JA Solar 505W (JAM66S30-505/MR) charakteryzują się:



Solar power is already the cheapest source of electricity in many parts of the world today, according to the latest IRENA report. Electricity costs from solar PV systems fell 85% between 2010 and 2020 [20]. Based on a comprehensive analysis of these projects around the world, due to the fact that the cost of photovoltaic power plants (PVPPs) will decrease, their ???



The most important solar panel specifications include the short-circuit current, the open-circuit voltage, the output voltage, current, and rated power at 1,000 W/m² solar radiation, all measured under STC.. Solar modules must also meet certain mechanical specifications to withstand wind, rain, and other weather conditions. An example of a solar module datasheet composed of ???



This JA Solar 505w solar panel has a high Voc of 48.43V, so your batteries will charge effectively even at a lower performance threshold. Winter or summer, rain or shine, it'll be one less thing to think about. Solar panel mounting options. Depending on your application, the JA Solar 505w solar panels can be mounted in a number of ways.



Q.TRON solar panels with global standard mounting option can withstand 5400 / 3600 Pa, which covers most of the regions with extreme environment conditions. Among extreme weather conditions like storms, blizzards and high winds, hail is the most concerning type for solar panel owners looking to protect their investment.