

# PHOTOVOLTAIC PANEL BASE BRACKET INSTALLATION SPECIFICATIONS



1. Inclined structures: They are the most common way to incorporate solar panels usually occurs on flat surfaces and provides the height and inclination the photovoltaic modules need. 2. Coplanar structures: They are those that are consistent with the surface of the installation other words, the inclination of the roofs is used, for example, and it is not ???



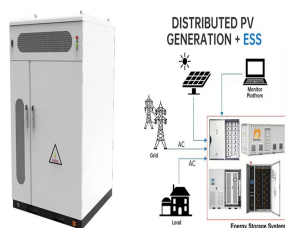
Key Components and Specifications. Solar mounting systems comprise several components: Mounting Brackets: These secure the solar panels to the mounting structure, ensuring stability. Rails: Rails provide a base for mounting the solar panels, acting as the backbone of the structure.



How many mounting brackets does a solar panel need? Typically each solar panel requires between 1 and 2 mounting brackets. For example, a set of 15 panels might require between 20 and 30 mounting ???



China leading provider of PV Panel Mounting Brackets and Adjustable Solar Panel Bracket, Jiangsu Guoqiang Singsun Energy Co., Ltd. is Adjustable Solar Panel Bracket factory. Solar Panel Fixing Brackets GQ-F Fixed Installation System For Fish Farming And Power Generation Hot Dip Galvanized Visiting China's first ultra-high altitude PV



All solar panel mounting systems will have a limit of building height ??? typically 10 m, but sometimes 20 m. For example, Australian company SunLock supplies a "one size fits most" set of drawings in its installation manual, but can provide extra certification for any building height, panel size or purlin/batten material or thickness

# PHOTOVOLTAIC PANEL BASE BRACKET INSTALLATION SPECIFICATIONS



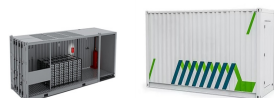
Furthermore, the decision on the most appropriate type of the solar panel mounting system will also affect the final cost of the project. The installation of the roof mounting may even imply modifications to your house ???



Solar panel mounts come in various forms, each designed to meet specific requirements and environmental conditions. From fixed mounts offering stability and simplicity to tracking mounts that follow the sun's ???



Mounting of Solar PV panels onto slate coverings require our slate roof fixing brackets. This is one of our roof PV fixing products that marry together to provide a high quality platform for solar panels. Solar PV slate mounting bracket. Slate ???



Discover how to expertly install solar panel mounting brackets on poles with Circle-solar's detailed guide. From site preparation to final testing, learn key installation steps to maximize the performance and longevity of your solar system. Contact Circle-solar today for more expert solar solutions!



Find Here is Solar panel frame, Solar panel mid clamp 10 mm to 45mm, end clamp 30mm to 45mm, Solar panel frame, Solar c section, Solar panel mounting fasteners, Base plate in India Skip to content +91 - 99041 71714 / +91 - 99041 77227 info@sspindia

# PHOTOVOLTAIC PANEL BASE BRACKET INSTALLATION SPECIFICATIONS



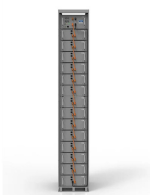
D Series Mounting Base Brackets Part # Description Weight Per Unit (lbs.)  
MBB-LD-MD LD/MD Mounting Base Bracket 0.40 MBB-XD-UD XD/UD  
Mounting Base Bracket.114 Mounting Base Bracket with 5/16" SS  
Hardware and clear coated nuts Mounting base brackets are fabricated  
from Series 6000 structural marine grade aluminum. 5/16" hardware  
included. P14 "L



Two Hole Photovoltaic Base Bracket either called Grounding Connector, is  
a mounting accessory for fixing and supporting solar panels. It is usually  
made of corrosion-resistant hot-dip galvanized steel or aluminum alloy and  
has two mounting holes ???



Solar Panel Specifications: The size, weight, and configuration of the solar  
panels must be compatible with the mounting system to ensure a secure  
installation. Climatic Conditions: Environmental factors such as wind,  
snow, and seismic activity must be taken into account to ensure the  
system can withstand local conditions.



Types of Solar Panels Brackets. There are different types available,  
including railless brackets, and top-of-pole mounts, the specific type of  
bracket or clamp chosen depends on factors such as the dimensions of  
the solar panel, installation method, and desired mounting angle for  
optimal exposure to sunlight.



Step 1 ??? Insert SGM holding top base (80mm and/or 130mm) in to the  
rail of SGM rafter. Step 2 ??? Fix the legs and SGM diagonal beam to the  
SGM holding top base. Adjust the SGM holding top bases according to the  
given measurements along the rafter.

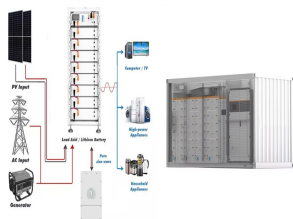
# PHOTOVOLTAIC PANEL BASE BRACKET INSTALLATION SPECIFICATIONS



Solar panel mounts can be completely customized to facilitate the effective positioning of the attached solar panel array to meet these parameters. When looking at residential solar panel systems, the roof layout and roof material type of the home will have a big influence on the mounting system and solar array in general.



K2 GreenRoof Vento ??? Can now be planned in K2 Base! More. Resource Center Resource Center. Webinars; K2 Training PV system with 472 kWp and 1,474 modules generates solar power for Schwarzwaldmilch in Freiburg im Breisgau. In addition to the technical key data, there is also a drone video of the PV installation. More . Close. Company



Photovoltaic Systems. Disconnect AC power before servicing or removing modules, AC modules, micro inverters and power optimizers. Additionally, Solar Stack eliminates crawling into hot or cold attic spaces to install solar panels. And because there's no drilling, you have total peace of mind that roof leaks won't result



Buying solar panel mounting brackets in the Philippines makes installation of solar panels easier, hassle-free, and cost-effective. Our professionals are trained to know the best specifications for your solar power system. They will consider your location, what materials should be used, and how to properly secure your solar panels



Here is a piece on Solar Panel Fixing Options built to help Developers, Contractors, Architects, and Homeowners grasp what's on offer for fixing PV panels. some allow you to install the panel directly to them. Shown in the ???

# PHOTOVOLTAIC PANEL BASE BRACKET INSTALLATION SPECIFICATIONS



Key Components and Specifications. Solar mounting systems comprise several components: Mounting Brackets: These secure the solar panels to the mounting structure, ensuring stability. Rails: Rails provide a base for ???



NEW! 410Wp Solar Panel. Larger than Marley's 335Wp panel, the new 410 Solar Photovoltaic Panel delivers a peak power of 410Wp to increase total power from a roof area, whilst allowing for the installation of fewer solar panels to achieve the desired power output.



Optionally cover the base of the bracket and tops of screws with additional adhesive for a secure solar panel installation. Future Solar Panel Removal Made Easy. The kit includes 8 tech screws for mounting into the roof and 8 for ???



A ground mounted solar panel system is a system of solar panels that are mounted on the ground rather than on the roof of buildings. Photovoltaic solar panels absorb sunlight as a source of energy to generate electricity. A photovoltaic (PV) module is a packaged, and connected photovoltaic solar cells assembled in an array of various sizes.



Boyue Photovoltaic Technology Co., Ltd is located in Hebei Province, China, the factory covers an area of 18,000 square meters, and 150 workers, 66 kilometers away from Beijing Airport and 180 kilometers away from Tianjin Xingang. Our company focuses on the detailed design, sales, production, installation and construction of seismic support brackets and accessories for ???

# PHOTOVOLTAIC PANEL BASE BRACKET INSTALLATION SPECIFICATIONS



Deciding to install a solar system is only the first step. Solar panel installation constitutes a substantial project with significant financial implications, entailing numerous subsequent decisions.. This article explores the solar panel mounting brackets for solar installation and the key factors to consider. Amidst the vast options, understanding the ???



4 ? Types of PV Panel Mounting Brackets. PV panel mounting brackets come in several types, each of them are designed for a specific application or installation environment. So ???



Ground fixing system for photovoltaic panels: GSE GROUND SYSTEM by GSE Integration, quick to install and universal. Skip to content.  
Downloads; Contact; Connector; Services (EN) GSE Int?gration. Leader europ?en de syst?mes de ???



The ideal pitch for a Solar Panel is around 30 degrees off the horizontal. Simply because this allows the panels to gain more exposure from the sun throughout the entire day. When installing Solar panels on a flat roof, this ???



The ProteaBracket is the most versatile exposed-fastened metal roof solar panel mounting bracket available. Go to for complete installation instructions, information, and tools available for properly attaching and tensioning S-5! clamps. 297-0014 for expert assistance and low wholesale pricing for S5! solar panel mounting

# PHOTOVOLTAIC PANEL BASE BRACKET INSTALLATION SPECIFICATIONS



The installation selection of photovoltaic ground brackets is mainly based on factors such as the fixing method of the bracket, terrain requirements, material selection, and the weather resistance, strength, and stiffness of the bracket. First, there are many fixing methods, such as pile foundation method (direct burial method), concrete block weight method, pre-embedded method, ground ???



Lag-Bolted L Brackets for Mounting PV Panels to Roof Decking. (Source: Solar Rating and Certification Corporation 2020.) Figure 7. Stanchion Mount for Mounting PV Panels on a Tile Roof. (Source: Davis Energy Group 2015.) Figure 8. Hanger Bolt Mounting with Flashing for Mounting PV Panels on a Round Tile Roof. (Source: Davis Energy Group 2015.)