

PHOTOVOLTAIC PANEL CONTROLLER PROGRAMMING EXAMPLE DIAGRAM



How does a solar panel charge controller work? The Arduino tries to maximize the watts input from the solar panel by controlling the duty cycle to keep the solar panel operating at its Maximum Power Point. Specification of version-3 charge controller :



What is an MPPT solar charge controller? An MPPT solar charge controller is an essential device for solar setups. MPPTs are intelligent DC-DC converters. They regulate current and voltage to safely charge batteries and power inverters. Aside from regulation an MPPT uses a clever algorithm that tracks a solar panel's maximum power point.



Which microcontroller is used in a solar charge controller? The microcontroller used in this controller is Arduino Nano. This design is suitable for a 50W solar panel to charge a commonly used 12V lead-acid battery. You can also use other Arduino board like Pro Mini, Micro and UNO. Nowadays the most advance solar charge controller available in the market is Maximum Power Point Tracking (MPPT).



Do solar panels need a PWM charge controller? PWM (pulse-width modulation) charge controllers depend on older, less reliable hardware and enable you to adjust the solar panel's voltage to the battery voltage. E.g., if you were to run a nominal 12-volt solar panel through a PWM charging controller, you need a 12-volt battery bank.



Do I need a charge controller for solar panels? Even with a proper charge controller, the prospect of having to pay 30-50% more up front for additional solar panels makes the MPPT controller very attractive. This application note describes how to implement MPPT using the most popular switching power supply topologies.

PHOTOVOLTAIC PANEL CONTROLLER PROGRAMMING EXAMPLE DIAGRAM



What is the best solar charge controller? You can also use other Arduino board like Pro Mini, Micro and UNO. Nowadays the most advance solar charge controller available in the market is Maximum Power Point Tracking (MPPT). The MPPT controller is more sophisticated and more expensive. It has several advantages over the earlier charge controller.



The MPPT or "Maximum Power Point Tracking" controls are much more sophisticated than the PWM controllers and allow the solar panel to run at its maximum power point or, more precisely, at the optimum voltage for ???



This controller is suitable for lithium batteries and all kinds of lead-acid batteries (OPEN, AGM, GEL) . Undervoltage protection
133*70*35mm/140g Discharge reconnect Lithium battery: 12.0V (defaults, Adjustable range 11.5-12.8V) Lithium battery: 10.7V (defaults, Adjustable range 9.0-11.0V) Lithium battery: 11.6V (defaults, Adjustable range 11.0-11.7V)



Unveil the secrets of solar panel diagrams! Learn how they work and master the components for efficient solar energy systems. Charger Controller: Optimal Battery Charging. A charger controller plays a vital role in off-grid solar ???



In conclusion, a solar panel system consists of solar panels, an inverter, a battery (optional), a charge controller, a mounting system, and a monitoring system. Each component plays a crucial role in harnessing the sun's energy and converting ???

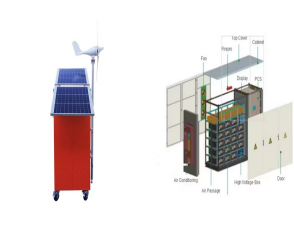
PHOTOVOLTAIC PANEL CONTROLLER PROGRAMMING EXAMPLE DIAGRAM



Sample Circuit Diagrams for MPPT Charge Controller To better understand the practical implementation of MPPT controllers, let's examine two types of circuits: one based on a dedicated MPPT IC and another using an ???



The solar charge controller (frequently referred to as the regulator) is identical to the standard battery charger, i.e., it controls the current flowing from the solar panel to the battery bank to prevent overcharging the batteries. As in a ???



In your suggested scheme, there are two power converters in the path from Solar panels to the batteries, whereas in the other model that you mentioned, one power converter, i.e. the charge controller is only one in the path between the solar panels and battery.

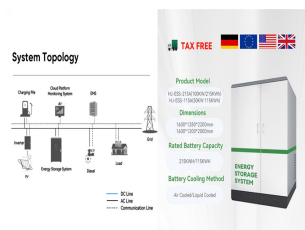


After installing a solar panel system, the orientation problem arises because of the sun's position variation relative to a collection point throughout the day. It is, therefore, necessary to change the position of the photovoltaic panels to follow the sun and capture the maximum incident beam. This work describes our methodology for the simulation and the ???



cycles. In this case, the algorithm modifies the solar panel operating voltage by using a proportional integral (PI) control loop, which steers the voltage to the desired value. SOLAR PANEL MPPT The main problem solved by the MPPT algorithms is to automatically find the panel operating voltage that allows maximum power output. In a larger system,

PHOTOVOLTAIC PANEL CONTROLLER PROGRAMMING EXAMPLE DIAGRAM



This way you can run a single 4 core wire from the control box up to the sensors on the panel, the four cores will be 5V, Gnd and then signal 1 and 2 from the LDRs. The servo needs to be sized according to the size of your solar panel. The panel used in this example is small and relatively light; a small servo was therefore used and is



Tracking (MPPT) solar charge controller for 12V and 24V batteries, that can be used as a power optimizer. This compact reference design targets small and medium-power solar charger ???



When calculating how many panels your charge controller can support connected in series, be sure to use the solar panel's open circuit voltage, rather than the nominal voltage. For example, most 12V rated panels will actually produce up to around 18V when your system isn't drawing much of a load.



Here is what you may have to set up an off-grid solar panel system: Estimate energy needs during daytime and nighttime; Calculate the required solar power; Select equipment and design a solar panel wiring diagram; Develop an electricity distribution scheme; Determine the optimal location of the solar panels and the wiring route



What is Solar Energy? Solar energy is a renewable and sustainable form of power derived from the radiant energy of the sun. This energy is harnessed through various technologies, primarily through photovoltaic cells and solar thermal systems. Photovoltaic cells commonly known as solar panels, convert sunlight directly into electricity by utilizing the ???



APPLICATION SCENARIOS



Web: <https://twojaelektryka.com.pl>

PHOTOVOLTAIC PANEL CONTROLLER PROGRAMMING EXAMPLE DIAGRAM



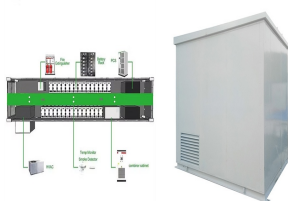
Schematic diagrams of Solar Photovoltaic systems. Have you decided to install your own photovoltaic system but don't know where to start? We have produced a number of connection diagrams for the various components of a solar ???



A solar panel wiring diagram or schematic should always be an essential part of your solar projects preparation. In the above example we include the following items to our wiring diagram: 270 Watt solar panel; DP Switch; MPPT Charge controller; 100Ah Lithium ion battery; 100 amp breaker; Portable fridge (DC) 220V Sockets;



Photovoltaic system diagram: components. A photovoltaic system is characterized by various fundamental elements:.. photovoltaic generator; inverter; electrical switchpanels; accumulators. Photovoltaic generator. The photovoltaic generator is the set of solar panels and is the element that converts solar energy into electricity.. These panels consist in ???



Connect solar panel strings in parallel by using a connector known as MC4 T-Branch Connector 1 to 2, My Zantrax 2000 inverter shows 14.0 volts. My Zenith 40 amp. controller shows E00, meaning no action needed. When I plug in a 1500 watt space heater, inverter beeps, and shows fault light. Does anybody know why? Reply.



Google Docs, which includes Google Draw, is the most collaborative web tool I know today. We can all work on one diagram together at the same time while we chat. In the meantime, the tools I use (and I do not mean to imply I do any real schematics) include Google Draw (free, cloud, part of Google Docs), GIMP (free, desktop) and flameshot (free

PHOTOVOLTAIC PANEL CONTROLLER

PROGRAMMING EXAMPLE DIAGRAM



This design is suitable for a 50W solar panel to charge a commonly used 12V lead-acid battery. You can also use other Arduino board like Pro Mini, Micro and UNO. Nowadays the most advance solar charge controller ???



What is Pulse Width Modulation Or A PWM Charge Controller? A PWM (Pulse Width Modulation) controller is an (electronic) transition between the solar panels and the batteries. The solar charge controller (frequently referred to as the regulator) is identical to the standard battery charger, i.e., it controls the current flowing from the solar panel to the battery bank to prevent ???



Solar panels work by converting the light radiation from the sun to Direct Current (DC) electricity through a reaction inside the silicon layers of the solar panel. The sun's energy is absorbed by PV cells, which creates electrical charges that move in a current.



Mini Solar Panel. 2. SG90 Micro-servo motor. 1. Rotary potentiometer (generic) 2. Pushbutton Switch, Pushbutton. Tools and machines. 1. PLX-DAQ. Apps and platforms. 1. Arduino IDE. Project description. 147} else { // //control up ???



The MPPT or "Maximum Power Point Tracking" controls are much more sophisticated than the PWM controllers and allow the solar panel to run at its maximum power point or, more precisely, at the optimum voltage for maximum power output. Using this smart technology, MPPT Solar Charge Controllers can be up to 30% more effective based on the attached solar panel's ???

PHOTOVOLTAIC PANEL CONTROLLER PROGRAMMING EXAMPLE DIAGRAM



1. Assessing Solar Panel Specifications. Determine the voltage and current ratings of your solar panels. This information is essential for selecting an MPPT charge controller that can handle the panel's output. 2. Selecting an ???



MPPT stands for Maximum Power Point Tracker; these are far more advanced than PWM charge controllers and enable the solar panel to operate at its maximum power point, or more precisely, the optimum voltage and current for maximum power output. Using this clever technology, MPPT solar charge controllers can be up to 30% more efficient, depending on the ???



Step 1: Understand the Solar Wiring Diagram. Here's the solar panel wiring diagram for this system: Here are the main points to understand about it: A basic solar panel setup consists of 4 main components. These are a battery, solar panel, charge controller, and inverter. Don't connect the solar panel directly to the battery.