

PHOTOVOLTAIC PANEL DETAILED DIMENSIONS



the mounted aluminum framed PV panels (i.e., other PV technologies or ground mount systems), EPA 5.1 Develop a detailed landscape plan with a clear emphasis on low-growth vegetation the average size of a grid-tied PV residential system installation in the United States has increased to just over 5.0 kilowatts. DC. as of 2009, which



Portrait ground-mounted solar panels, featuring a vertical alignment with their shorter side at the bottom, optimize space utilization by enabling more panels to be installed in a series, subsequently enhancing energy production capacity in a confined area. Portrait Ground Mounted Solar Panels are commonly available with two rows of panels and varied lengths ???



Shorter lifespan ??? this solar panel size typically lasts for 10-20 years. Frequently Asked Questions. To understand solar panel size better, here's a list of FAQs about the best solar panels system. What Is the Typical Size/Dimensions of a Solar Panel? The standard solar panel dimensions can vary depending on the type and manufacturer.



Use our solar panel calculator to get an idea of what size system is right for you. Get quotes from at least three installers. Make sure the installers you look at are MCS-certified, which ensures they adhere to a strict code of conduct.

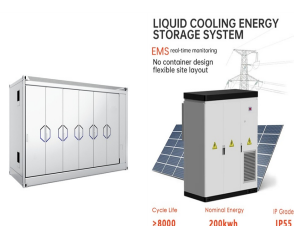


Calculating the size of the solar panel system needed for your home involves a few important steps. Understanding your energy requirements, solar panel efficiency, how sunlight affects generation, and the perks and pitfalls of your roof space are all necessary considerations when choosing the right size solar PV system for your property in the UK.

PHOTOVOLTAIC PANEL DETAILED DIMENSIONS



Typical Solar Panel Dimensions: Exploring Length, Width, and Depth. Our data reviews solar panel dimensions from various manufacturers. Analyzing this data, we can identify the typical ranges for length, width, and depth: Length: The data showcase a broad range of lengths, typically between 67.8 inches and 93.9 inches



I-V CURVES OF PV MODULE(590 W) Current (A) P-V CURVES OF PV MODULE(590W) Power (W) Voltage(V) Voltage(V) 0 10 20 30 40 50 0 10 20 30 40 50 5.0 10.0. 15.0 200W/m?? 400W/m?? 1000W/m?? 800W/m?? 600W/m?? 100 200 300 400 500 200W/m?? 400W/m?? 1000W/m?? 800W/m?? 600W/m?? 20.0 600 No. of cells 120 cells 2172 1303 40 40 1303 2172 1400 1200 400 1264 621



Standard Solar Panel Dimensions in mm. A solar panel's wattage and cell design determine its overall physical dimensions and mass. In general, the solar panel dimensions in mm are 156 mm x??? 156 mm. Standard Solar Panel Dimensions in cm. The solar panel dimensions in cm are determined by the output of the manufacturer. The size of a solar



Detailed Process. System Design and Planning: Based on the site assessment, we recommended a system comprising 18 high-efficiency solar panels, each measuring approximately 65x39 inches. This size was chosen to maximize the roof space utilization and meet the energy needs identified. Understanding the factors that influence solar panel



The panels in the SunPower range have an output of 370W, 390W or 400W, compared to 265W, 270W, or 275W for the Trina panels. Dimensions for the SunPower panels are 1,046mm x 1,690mm, compared to ???

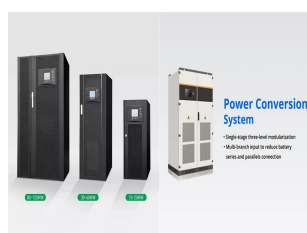
PHOTOVOLTAIC PANEL DETAILED DIMENSIONS

Commercial and Industrial ESS

- Budget Friendly Solution
- Renewable Energy Integration
- Minimal Design for Flexible Expansion



Understanding Solar Panel Dimensions and Sizes. Solar photovoltaic (PV) systems contribute to environmental conservation by reducing carbon footprint, lowering energy costs, and providing independence from the power grid through energy storage. Consequently, an increasing number of individuals in the UK have opted to invest in solar panels.



Therefore, consider solar panel dimensions to get an idea of the overall scale of a proposed solar system. In terms of dimensions, domestic solar panels average 1.7 metres long, and 1 metre wide and have a thickness of 3cm to 5cm. (DNO) process, and explore our detailed solar panel guide and solar advice section for expert insights and



The size of a 300w solar panel A 300w solar panel is generally a popular choice for residential applications and small commercial systems thanks to its balance of performance and footprint. A panel of this wattage can generate enough energy to power multiple home appliances and significantly help reduce energy costs.



Based on FMB's best solar panels, the average solar panel dimensions in the UK are: Solar panel size: 1,945.5mm (length) x 1,130.1mm (width) x 31.25mm (height) Weight: 23.6kg While there isn't much variation in width (six of our eight best panels measured 1,134mm) and height (all but one was 30mm tall), there were significantly different lengths.

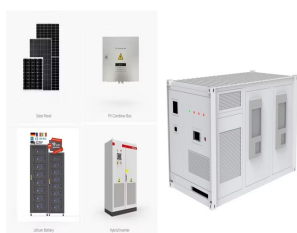


Types of Solar Panels by Size and Use Residential Solar Panels. The most common solar panels for residential use typically have dimensions of 1.65 m x 1 m and consist of 60 photovoltaic cells. These panels are designed to optimize the available space on rooftops, providing an ideal balance between size and performance.

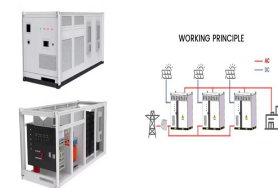
PHOTOVOLTAIC PANEL DETAILED DIMENSIONS



Many solar panel companies make small solar panels designed specifically for small roofs. You can also opt for high-efficiency solar panels that have conversion rates as high as 23% (compared to the industry average of ???)



8 panels: 9 panel: 10 panels: PV output kWp: 1.6: 2.4: 2.4: 3.2: 3.6: 4.0:
PV generation kWh p.a. (Telford-UK) 1488: 2322: 2322: 2976: 3348:
3720: Field format on roof: 1 row x 4 modules: 1 row x 6 modules: The size of a photovoltaic system is primarily based on the electricity demand of a house. If the electricity demand and the size of



As of September 30, 2021, JinkoSolar has delivered more than 80GW solar panels globally, which makes JinkoSolar the world's largest photovoltaic module manufacturer in terms of cumulative shipments. Anhui Chuzhou (China) Zhejiang Yiwu (China) 4 5



When it comes to standard solar panel sizes, like 300w or 500w, it is essential to determine the size of a solar panel system based on these standard sizes. The dimensions of a standard solar panel, no matter how a solar panel is made, typically range from 65 inches by 39 inches, with variations in size depending on the type of solar panel. The



Overall, a solar panel diagram with explanation PDF is a valuable resource for understanding the functionality and components of a solar panel system. It provides a visual aid for anyone interested in harnessing solar energy and can ???

PHOTOVOLTAIC PANEL DETAILED DIMENSIONS



Each solar panel was meticulously aligned and secured to the frames, ensuring maximum exposure to sunlight throughout the day. Maintenance Plan: To ensure the longevity and efficiency of the solar panel system, we developed a detailed maintenance plan. This included regular inspections for corrosion, stability checks, and cleaning schedules.



Solar panel framing machines must be integrated into the overall solar panel production line, seamlessly interfacing with upstream and downstream processes. Automated conveyor systems: Belts or rollers that transport the ???



When establishing a solar farm, it is essential to consider the available land area, as it can restrict the number of panels that can be installed. Below, we will provide a detailed overview of the most common parameters. Solar panel size. Solar panels are equipped with photovoltaic cells, which convert solar energy into electricity. While



96-cell solar panel size. The dimensions of 96-cell solar panels are as follows: 41.5 inches long, and 63 inches wide. That's a 63x41.5 solar panel. This form is a bit shorter but wider. This is the typical classification of solar panel sizes (based on the solar cell size). It's a bit theoretical and quite useless for most calculations.



An important consideration in calculating inverter size is the solar panel system:inverter ratio. This is the direct current capacity of the solar array divided by the maximum alternating current output of the inverter. For example, a 3kW solar panel system with a 3kW inverter has an array-to-inverter ratio of 1.0.

PHOTOVOLTAIC PANEL DETAILED DIMENSIONS



Ground-mounted solar panels in landscape orientation are designed to capitalize on vast land areas, facilitating efficient energy capture. With the long side at the bottom, landscape panels sprawl horizontally, offering an expansive solar-absorbing surface. Landscape Ground Mounted Solar Panels are commonly available with four rows of panels and varied ???



One of the most important ways to combat climate change and the global energy issue is by promoting the use of solar energy. About 80% of the energy required to heat indoor spaces and water can be replaced by solar ???



Why Solar Panel Size Matters . When investing in solar panels, it's not just about how many panels you get; it's also about their size and capacity. Larger panels might produce more energy, but they also require more space. Common Solar Panel Sizes: A Detailed Overview . Small Solar Panels. Small solar panels typically measure around 12

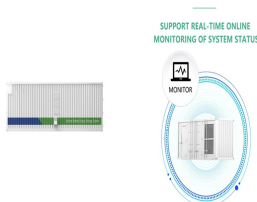


Solar panel size indicates the amount of energy that is produced by your system, while solar panel dimensions indicate the physical size of the solar panel. The average 350W solar panel has the dimensions of 190cm x 100cm x 4cm. On average, domestic solar panels weigh somewhere between 18 and 21kg.



Solar Panel Market Size: The global solar panel market size reached 259.7 GW in 2023. Looking forward, IMARC Group expects the market to reach 1,096.5 GW by 2032, exhibiting a growth rate (CAGR) of 16.8% during 2024-2032. The market is experiencing steady growth driven by the rising environmental concerns among individuals, governing agencies of several countries are ???

PHOTOVOLTAIC PANEL DETAILED DIMENSIONS



Solar panel size refers to the total amount of power a solar panel can generate over a period of time; Solar panel dimensions refers to the physical size of a solar panel; Solar panel sizes and wattage range from 250W ???