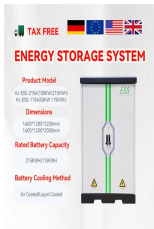


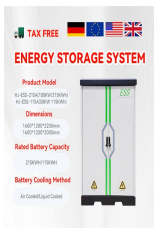
PHOTOVOLTAIC PANEL DISASSEMBLY AND ASSEMBLY



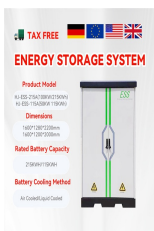
What is a solar module disassembly line? Developed by Japanese PV equipment provider NPC Incorporated, the solar module disassembly line is claimed to enable the reuse of frames, junction boxes, intact broken glass, solar cells and EVA sheets. The module disassembly line. Image: NPC Incorporated



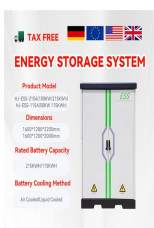
How does envie use disassembly equipment to dismantle PV panels? ???Envie will utilize our disassembly equipment to dismantle PV panels and then cooperate with Rosi, a French company that developed recycling processes allowing to separate and recover metals such as silver and high purity silicon from the PV cells, ??? it further explained.



How to assemble a solar panel? So, except plates, you also need some tin, iron and a soldering pencil. Take a notice: it's better not to use tin overmuch. Make sure joints are soldered proper and good. After all needed details have been prepared, you can start to assemble your solar panel. After working soldering spots with a special pencil, use the iron to apply tin carefully.



How are solar panels made? Firstly, all the raw materials required to create solar panels are collected near the assembly line, like solar cells, glass, EVA film, etc. To create a solar panel, the most important raw material is a solar cell, which is usually imported from outside. One box of solar cells has 12 packets, and each packet has 120 cells.

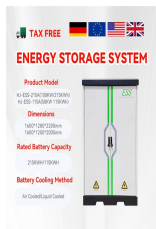


Can you walk on a LONGi Solar PV module? DO NOT stand or walk on PV modules. Prior to beginning installation, review the Installation Manual for LONGi Solar PV Modules. Do not carry a module alone; always use two people to lift and carry. Do not drill holes in the frame of the module. In addition to invalidating the product warranty, this will also reduce

PHOTOVOLTAIC PANEL DISASSEMBLY AND ASSEMBLY



How to test a solar panel? The temperature around this machine is 25°C, the power is 1000 watts per square meter, and the airmass is 1.5. These are the standard conditions to test a solar panel. Once the test is done, a test report is generated by the machine that displays the IV curve. This report is stuck to the backside of the solar panels.



Single line manual bit. 35 Operators Line. Fully Automatic Solar Panel Laminating Machine. The laid module string, glass, EVA, and backsheet are put into the laminator, and the air inside the module is extracted by vacuuming, and then the EVA is melted by heating to bond the cell, glass and backsheet together; finally the module is cooled



Ooitech, Full Automatic solar panel manufacturing equipment supplier, producing solar panel Making Machines and production lines at Good prices, including Assembly and Turnkey Lines, solar panel laminator, framing machine, tester, with free installation and training. Achieving Carbon Neutrality.



manual, the PV produce, the specifications, or product information sheets without prior notice. roof assembly. UL-1703, includes revisions through October 12, 2015, Section 16 and 31.1.2; UL790-2014 The System Fire Class Rating of the module or panel in a mounting



Est. reading time 10 minutes. 57325 Solar panel manuals and instructions online. Download Thunderbolt 57325 PDF manual. Sign In Upload. Download Table of Contents Write the product's serial number in the back of the manual near ???

PHOTOVOLTAIC PANEL DISASSEMBLY AND ASSEMBLY



Module Assembly ??? At a module assembly facility, copper ribbons plated with solder connect the silver busbars on the front surface of one cell to the rear surface of an adjacent cell in a process known as tabbing and stringing. The interconnected set of cells is arranged face-down on a sheet of glass covered with a sheet of polymer encapsulant. A second sheet of encapsulant is ???



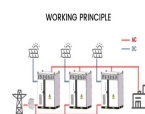
Sun-Age designs and produces the most efficient fixing systems for structure on tile roofs, such as the innovative BEE33 UNIVERSAL BRACKET which saves costs and installation times on most tile roofs! We provide ready-to-deliver kits and brackets that will make your solar and photovoltaic panel assembly work faster and safer. Contact us now.



INSTALLATION MANUAL. IEC & UL version . The Honey/Allmax Module TSM-PC05A TSM-PC05A.05 TSM-PC05A.08 TSM-PD05 TSM-PD05.05 ??? Potentially lethal DC voltages can be generated whenever PV Modules are exposed to a light source herefore,, t Canadian Electrical Code Part 1. The System Fire Class Rating of the module or panel in a mounting



At Matsuyama Factory in Ehime, Japan, an automatic solar panel disassembly line is installed. The line separates glass from other materials without crushing, applying the "separation method using heated blade," our own technology. ???



Solar Photovoltaic Panel Production Line is a high-tech manufacturing process that converts sunlight into electricity using photovoltaic cells, involving cutting, assembling, and packaging solar panels for efficient energy generation.

PHOTOVOLTAIC PANEL DISASSEMBLY AND ASSEMBLY



Flexibility and lightweight, especially for thin-film PV modules. Automated Assembly Production Process. Cell Testing: The photovoltaic panel production line is a highly automated manufacturing process that involves precise testing, classification, welding, and interconnection of solar cells, as well as the automatic lamination and pressing



1. High technology accumulated in PV industry and ability of applying it to new industries. We have accumulated high technology in PV industry from development and sales of PV module manufacturing equipment to panel reuse/recycling.

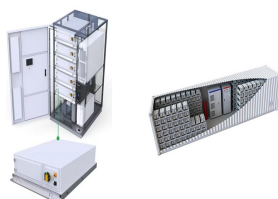


The process starts with the frame assembly table, which assembles the frame of the module. The frame is then placed on the module assembly table, which places the modules into the frame. Manual solar panel machines are the least expensive and are typically suited for small-scale operations. Semi and fully-automated machines are more suited



INSTALLATION MANUAL FOR JA SOLAR PHOTOVOLTAIC MODULES

Figure 1 Modules components and cross-section of the laminated assembly 3.1 Conventional Safety JA Solar Modules are designed to meet the requirements for the standards IEC 61215-1:2016, IEC61215-1-1:2016, IEC61215-2:2016, IEC61730-1:2016 and IEC61730-2:2016 that have safety class II



Secure the solar panel bracket with no less than 6 bolts so the panel can't move. Ensure the bolts aren't penetrating the panel. Next, find the 4 gauge holes on top of the pole. Each hole is half an inch wide. Use one of these holes to attach the solar panel assembly to the top of the pole.

PHOTOVOLTAIC PANEL DISASSEMBLY AND ASSEMBLY



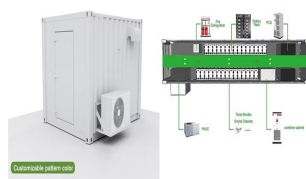
"SOLAR PANEL", See figure 1. Wait until the inverter recognises the PV panels. A PV panel symbol will appear on the information screen of the inverter; See figure 3 below Figure 1 Figure 2 STEP 4: Wait on standby mode for 30 seconds, then press the ON/OFF button (see figure 2) again for 1 second to turn on the inverter into the inverting mode.



To the machinery and solar panel production equipment are then added a series of services provided by the equipment supplier, such as training activities prior to delivery of the line, the preparation of the layout with all the indication to the operating requirements, support for the purchase of raw materials, and more.



PV Module Manufacturing Equipment. We provide a wide range of manufacturing equipment for thin film (compound, organic, perovskite, etc.) and next-generation PV modules utilizing our 30 years of experience and expertise accumulated in providing silicone crystalline and ???



After the solar panel is laminated, it needs to be cooled quickly to make sure the layers stick together well. Semi-automatic solar panel laminators combine manual and automated processes. Operators manually load the solar cells, encapsulant materials, and cover sheets into the machine. Assembly: The cells are tightly connected on a



Here is the simple steps to install solar panels Step ??? 1: Solar Panel Installation Made Easy Step ??? 2: Assembly of Solar Panels Step ??? 3: Electrical Wiring Step ??? 4: Connection between Solar Panel and Solar Inverter Step ??? 5: Connection between Solar Inverter and Solar ???

PHOTOVOLTAIC PANEL DISASSEMBLY AND ASSEMBLY



Manufacturing a solar panel includes both automation processes and manual work. The automation part is important in order to achieve higher accuracy and quality. Also, the manufacturing plant needs to be clean ???



5.2 Monofacial assembly mechanical installation 5.2.1 Bolts Mounting 5.2.2 Clamp Mounting 5.2.3 Installation and Mechanical Load of Monofacial Module Please provide this manual to PV system users for reference and inform the advises on operation, maintenance requirements etc. 2



1. Select a mounting location for the Solar Panel Kit. The Solar Panels should face the Sun, and not be blocked by shadows. The location should allow the Panels to be protected from accidental damage. The location should be flat, stable and able to support the weight of the Solar Panel Kit's accessories. Before assembly, be sure



This guide covers a wide range of topics related to installing Renogy solar panels from identifying the specifications of your solar panel and selecting a suitable junction box to mechanical and electrical installation ???

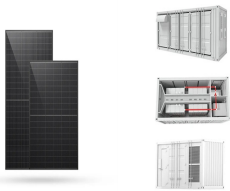


Increasingly, EMS providers specializing in SMT are seeking to diversify and fill capacity. Photovoltaic solar cell module assembly is becoming a popular choice to meet those goals. PV cell stringing in solar module assembly is achieved using many common SMT materials and processes. Solders, fluxes, and common reflow technologies produce electrical ???

PHOTOVOLTAIC PANEL DISASSEMBLY AND ASSEMBLY



Modular equipment production for solar panels manufacture. Turnkey production lines for photovoltaic systems. Solar Automation Solutions. Modular equipment production for solar panels manufacture. Mondragon Assembly is a European leader in the production of technological equipment for solar modules manufacturing, covering several cutting



Ensure that the solar panel is securely mounted in its final location, as per the guidelines in the previous sections. Electrical Connections: Run wiring from the solar panel to the inverter (for grid-tied) or to the charge controller (for off-grid). Ensure all wiring complies with electrical codes and safety standards. System Integration:



It's better to avoid cutting the soldered leads, "cause it can lead to damaging the panel. Now you're able to assemble and to install a simple and low-cost solar panel by your own hands. As we've discovered, the job is much easier than it ???