

PHOTOVOLTAIC PANEL ELEVATOR SHAFT



It is the vertical shaft running through a building that houses the entire elevator system. The hoistway provides a safe and structured space for the elevator car, counterweight, guide rails, and other essential components to operate. Elevator Car: The Passenger Cabin. The elevator car, or cabin, is the space where passengers ride. It is



An elevator shaft is a tall enclosed space in a building that helps elevators or lifts???depending on what you call it, move up and down without problems. Visualize it like the elevator's personal space or road in the building. The shaft is designed to house the elevator moving parts and other assets for the safety of users.



GEDA Solarlift ??? a Professional Mounting for Photovoltaic Systems. After the decision of placing a photovoltaic system on the roof has been made, the solar panels need to be mounted. It might sound like a lot of work at first, but GEDA Solarlift is your choice for assembling large and unhandy solar panels and photovoltaic modules.



Solar Panel Lift Price - Select 2024 high quality Solar Panel Lift Price products in best price from certified Chinese Panel Lift Table manufacturers, Industrial Lift suppliers, wholesalers and factory on Made-in-China Hot Safe Electric Lift for Climbing Solar Panel Cargo Elevator Lift Length 4-18m US\$ 200-428 / sets. 1 sets (MOQ) Anhui



However, the successful implementation of solar-powered lifts requires careful consideration of factors such as energy requirements, solar panel capacity, and battery storage for uninterrupted operation. Proper planning, design, and ???



LiftCon offer 8, 10 and 13 person lift cars, including the precast concrete shaft that can be structural or nonstructural, depending on the nature of the concrete lift shaft required by the client, all are manufactured as a stock item, these can be readily ordered from our on-line quote service,

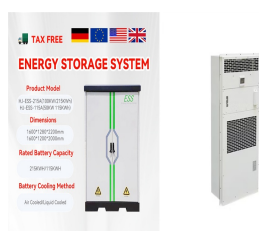
PHOTOVOLTAIC PANEL ELEVATOR SHAFT

Customers would have a choice of this complete package or just the lift shaft, however both ???

PHOTOVOLTAIC PANEL ELEVATOR SHAFT



Elevator shaft walls are usually built using shaft wall systems, which include a combination of substances inclusive of gypsum board and metallic framing. Gypsum board, recognized for its fire-resistant residences, is ???



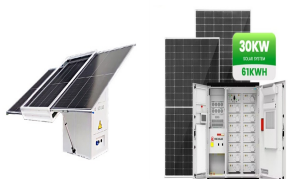
The region of Andalusia is located in southern Spain, and has a total surface area of 87,597 km². With an average solar radiation of 4.75 kWh/m² per day [6], [7], it is the region in Europe with the highest solar energy potential for the production of this type of renewable energy [8], [9]. Furthermore, the large volume of residential building construction in recent years and ???



An elevator in floor plan is a detailed architectural plan or diagram that depicts the layout, positioning, and functional aspects of elevator systems within a building or structure. It serves as a guide for architects, engineers, installers, and maintenance personnel during the design, construction, installation, and maintenance phases of an elevator project. An elevator ???



Our GEOPANEL system is ideal for constructing stairwells and elevator shafts. The lightweight design of the panels allows carpenters to easily install and dismantle the setup ??? giving them the option to quickly repeat the same process throughout various floors of the building.



Precast panels offer a fast-tracked solution to building elevator shafts. Precast elevator shafts are also a great way to reduce material, project timelines and labor costs on a project, creating a more efficient and safer job site.

PHOTOVOLTAIC PANEL ELEVATOR SHAFT



Solar panel micro cracks, or more precisely micro cracks in solar cells pose a frequent and complicated challenge for manufacturers of photovoltaic (PV) modules. While on the one hand it is difficult to assess in detail their impact on the overall efficiency and longevity of a solar panel, they are one of the main sources of malfunctioning or even inactive cells.



Study with Quizlet and memorize flashcards containing terms like Building-integrated photovoltaics are: A. PV materials that are permanently laminated to exterior building materials. b. a form of insulation material. c. PV panels installed on the interior of a building. d. installed on a support structure above the roofing membrane., Designing roofs as cool roofs primarily ???



1. Elevator Shaft Also known as the elevator hoistway. You've probably had a glimpse of it when you looked down as you stepped over the gap and out of the elevator, and recognize this as the place where you don't want to drop your keys. 2. Elevator Cab The elevator cab is the room that holds the passengers.



County Prestress & Precast manufactures, delivers, and installs high-precision precast elevator shafts. Call (708) 562-7700. Home; Products. Back; Insulated Wall Panels; Parking Structure & Building Components; Hollowcore; MagnumStone (R) Retaining Walls; Parking Stops



The present invention relates to an elevator system in a shaft frame with a photovoltaic control, comprising converting a shaft glazing for an elevator shaft, which is attachable to a building, at ???

PHOTOVOLTAIC PANEL ELEVATOR SHAFT



BIPV Noisy Barrier | Elevator Shaft. BIPV adopts low light transmittance design, provides more electricity for the elevator, and the solar module is consistent with the elevator frame style BIPV Solar Roof Tiles One-Stop System Solution ???



Determine the power requirements: The power requirements for an elevator depend on the weight it needs to carry and the speed at which it needs to travel. You need to calculate the maximum power requirement and design the solar panel system accordingly. Choose the right solar panels: Solar panels come in different sizes and capacities.



The invention discloses a rotation type photovoltaic panel support frame. The support frame comprises a rotating frame body which is hinged to the ground through a vertical revolving shaft and is connected with a rotating adjusting mechanism, and an inclined frame body which is hinged to support pillars on the rotating frame body through hinged seats, and a tilt angle adjusting ???



Glass lift shafts are a modern, attractive alternative to an enclosed design Glass lift shafts have revitalised the architecture behind enclosed elevators. Lifts can now be seen as an attractive design feature where they may previously have ???



The gypsum board cavity shaftwall system marked a significant change in how elevator shafts, stairwells and vertical service shafts were constructed in medium- and high-rise buildings. These designs combine lighter-weight materials, ???

PHOTOVOLTAIC PANEL ELEVATOR SHAFT



BIPV adopts low light transmittance design, provides more electricity for the elevator, and the solar module is consistent with the elevator frame style, so that the whole elevator is beautiful and generous, fully embodies the theme of ???



Space Availability: Measure the available space for the elevator shaft, machine room, and control panels. Ensure there's enough room for the elevator components to be installed without compromising structural integrity. Shaft Dimensions: Plan the dimensions of the elevator shaft to accommodate the elevator type. This includes the width, depth



Within the framework of a collaboration with BGT (Bischoff Glastechnik), customized and semi-transparent blue ASCA (R) organic photovoltaic (OPV) modules have been designed and ???



Precast concrete lift shafts have become a lot more popular in recent years due to the ease and speed that a lift shaft can be built. Coupled with the reduction in health and safety risks that can accompany construction using traditional ???



Walls that enclose elevator shafts, stairwells and other vertical shafts are the lifeline of a building. Should a fire occur, firefighters control the use of elevators, CGC Sheetrock(R) Brand Gypsum Panels Elevator car Elevator shaft Elevator shaft door frame 25.4 mm (1") CGC Sheetrock(R) Brand Glass-Mat Liner Panels



The Solmetric Module Lift is designed to safely and quickly transport a PV module to a roof. The device uses your existing fiberglass Werner or Louisville extension ladder. A pulley system is attached to the top of the ladder. A patented module ???