

PHOTOVOLTAIC PANEL EQUIPMENT INSTALLATION REQUIREMENTS



Can a solar PV installation be a 'permitted development'? A solar PV installation can be classed as 'permitted development' subject to conditions and when not located within a conservation area, AONB or world heritage site. After a number of years exposed to wind, rain, snow, ice and sometimes animals; solar panel systems can start to develop faults.



What are the requirements for a PV installation? Virtually all domestic PV installations will fall under the scope of Part P. Part P requires the relevant Building Control department to be notified and approve the work. There are two routes to comply with the requirements of Part P: Notify the relevant Building Control department before starting the work.



What are the requirements for solar panel installation? diate enforcement action by HSE inspectors??? Solar panel installation is not short duration work and ill need scaffolding or similar equipment.??? It should have a boarded working platform and full edge protection (double guard-rails and toe-boa ds) to stop people and tools from falling. Debris netting may also be necessary to prevent materials



Are there any UK standards relating to a PV installation? While many UK standards apply in general terms,at the time of writing there is still relatively littlewhich specifically relates to a PV installation. However,there are two documents which specifically relate to the installation of these systems that are of particular relevance:



Do you need planning permission to install solar panels on your roof? An increasing number of people are investing in solar energy. More and more homes are having solar panels, or solar tiles, installed on their roofs. Of course, with such installations, the topic of planning permission and building regulations often comes to the surface.

PHOTOVOLTAIC PANEL EQUIPMENT INSTALLATION REQUIREMENTS



What is a solar PV installation? The confusion comes in as a solar PV installation is often much more than electrical work, for example some installations involve major roofing work and other structural changes especially when integrating photovoltaics into a building's fabric. This work goes beyond Part P and electrical installations, we are now talking about building work.



??? Solar panel installation is not short duration work and will need scaffolding or similar equipment. ??? It should have a boarded working platform and full edge protection (double guard- rails and ???



How Long Does it Take to Install Solar Panels? "Once everything is confirmed, an installation date will be arranged and the full installation (say 10 panels) should not take more than a day, possibly two in more challenging circumstances," explains David Hilton. How to Install Solar Panels: A Step-by-Step Summary. 1.



working that can help ensure solar PV systems are appropriately monitored and maintained. The Guidelines cover suggested training requirements and key issues relating to safe roof access ???



Any PV system must comply with Health and Safety Requirements, BS 7671, and other relevant standards and Codes of Practice. Much of the content of this guide is drawn from such requirements. While many UK standards apply in general terms, at the time of writing there is ???

PHOTOVOLTAIC PANEL EQUIPMENT INSTALLATION REQUIREMENTS



6 Product and installation standards and test methods for microgeneration systems 28 6.1 PV systems 29 6.2 Solar thermal systems 31 6.3 Microwind turbines 32 Annex Simplified method for determining wind loads on roof-mounted photovoltaic, 34 solar thermal and microwind turbines A.1 Simplified method for PV and solar thermal systems 34



PART 14 E+W Renewable energy Class A ??? installation or alteration etc of solar equipment on domestic premises E+W Permitted development E+W. A. The installation, alteration or replacement of microgeneration solar PV or solar thermal equipment on??? (a) a dwellinghouse or a block of flats; or (b) a building situated within the curtilage of a dwellinghouse or a block of flats.



Introduction to Photovoltaic Systems: Gain foundational knowledge and skills in the installation of photovoltaic panels and solar energy systems, including safety procedures and equipment handling. Health and Safety Practices: Adhere to safety protocols and regulations specific to the installation of photovoltaic panels, ensuring a safe working environment for oneself and others.



They're also crucial for maintenance and repairs of the solar PV system after installation. Maintenance and repair workers rely on up-to-date and accurate labels to ensure their safety and help them work efficiently. Solar PV System Parts and Areas Needing Labels. We've established that warning labels and signs are important to PV systems.



An example of completely unacceptable installation work practices that could easily result in death or serious injury. Unsafe work at height like this would normally lead to immediate enforcement action by HSE inspectors ??? Solar panel installation is not short duration work and will need scaffolding or similar equipment.

PHOTOVOLTAIC PANEL EQUIPMENT INSTALLATION REQUIREMENTS



Planning Permission for Solar Photovoltaic (PV) Systems . A solar PV installation can be classed as "permitted development" subject to conditions and when not located within a conservation area, AONB or world heritage site. Ground ???



Building code requirements related to installation, materials, wind resistance, and fire classification can help ensure the safe installation and operation of PV systems. AHJs ???



considered equipment. If the solar PV panel installation does not comply with any of these three conditions in the exception to Section 602.1, then the structural members are required to meet all of the UL 61730-1 and UL 61730-2 are the new listing requirements for PV panels as amended in the 2022 CBC Section 3111.3.5.1. PV panel

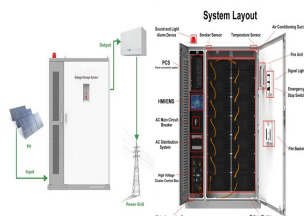


Equipment grounding requirements for PV systems are covered in 690.43. These requirements include the bonding and grounding requirements for exposed metal parts of PV systems such as metallic module frames, electrical ???



Solar panels, or photovoltaics (PV), capture the sun's energy and convert it into electricity to use in your home. Installing solar panels lets you use free, renewable, clean electricity to power your appliances. You can sell extra ???

PHOTOVOLTAIC PANEL EQUIPMENT INSTALLATION REQUIREMENTS



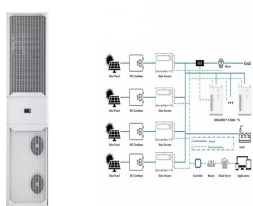
Solar Panels: Photovoltaic Metering Equipment: Many solar panel installations include net meters or smart meters to monitor energy production and consumption. This is crucial for tracking your solar system's performance. Adhering to general fire safety standards is one of the solar panel installation requirements to keep in mind. Key



Alternatively, the 3m vertical separation can be exempted if a 1-hr fire-rated horizontal projection that extends at least 600mm from the building is installed between the PV installation and the unprotected opening. (d) PV installations located adjacent to exit staircases shall comply with Cl.2.3.3a.(3) or Cl.2.3.3b.(2)(b).



Photovoltaic (PV) panels are a common sight on the roofs of domestic properties, in towns and cities across the UK. This article gives an overview of a typical PV installation. PV modules will generate a voltage whenever subjected to daylight so PV equipment on the DC side of the inverter must be considered energised even when



Level 3 Award in the Installation and Maintenance of Small Scale Solar Photovoltaic Systems - BPEC Level 3 Award in the Installation of Small Scale Solar Photovoltaic Systems (2399-11) - City & Guilds Level 3 Award in the Installation and Maintenance of Small Scale Solar Photovoltaic Systems (2399-12) -City & Guilds Issue: 4.0 Date 16/09/2020



4.1 Solar PV system installation that comes with any new building project shall be reflected in the building plans together with all other fire safety works for submission to SCDF for approval. 4.2 For existing buildings where solar PV system is to be installed, the plans may be

PHOTOVOLTAIC PANEL EQUIPMENT INSTALLATION REQUIREMENTS

TAX FREE



Fire resistance of roof coverings esp roof integrated PV panels, PV tiles & PV slates ; Cable penetrations through walls, ceilings and floors must not assist the spread of fire ; Adequate ventilation of heat producing equipment e.g solar PV inverters, solar PV panels and PV Cables. Use of certified and correctly applied materials



Follow along with the essential steps of photovoltaic systems installation, from mounting solar modules and connecting to the grid, to commissioning and regular maintenance for optimal performance. Solar panels produce direct current (DC) electricity, which needs to be converted into alternating current (AC) for use in homes and businesses



Step 8: Select panels, inverters, and equipment . Choosing the right solar panels, inverters, and equipment involves balancing efficiency, cost, and specific installation requirements. Solar panels. The main types of solar ???



Additionally, there are tax credits available for individuals who install renewable energy systems like photovoltaic panels on their property. So if you're considering making the switch to solar power in Ireland, rest assured that there is government support available to help make it happen.



To accurately determine your solar power needs, you should consider several factors such as the amount of sunlight that hits your location throughout the year, local weather patterns (i.e., wind speeds), roof angle for optimal panel performance and orientation to maximize exposure to sunlight, total square footage of available roof space for mounting photovoltaic ???

PHOTOVOLTAIC PANEL EQUIPMENT INSTALLATION REQUIREMENTS



Solar panel installation costs. Obviously, solar panel installation costs vary based on the size of the system, location, complexity and equipment chosen. But as a ballpark figure, PV costs about ?1,600-2,150 per kWp to install, making a standard 4kWp domestic system about ?6,500 (inc. ???



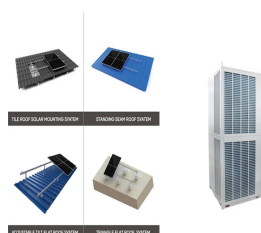
If your installation generates renewable electricity using solar PV, wind, hydro or AD and has a Total Installed Capacity (TIC) of up to 5MW or is a fossil fuel-derived CHP with a TIC up to 2kW, you could receive FIT payments if you meet the scheme eligibility requirements.



6 Glossary AMP: Annual Maintenance Plan BS: British Standard COSHH: Control of Substances Hazardous to Health Client(s): A person or organisation that receives a service in return for payment. H& S: Health and Safety HCM: Hierarchy of Control Measures HSE: Health and safety executive MLPE: Module-level power electronics O& M: Operations and maintenance



This guide is aimed at Clients either planning or undertaking installation of Photovoltaic (PV) systems on "Large Scale" buildings. These are typically owned by organisations from the public



system wiring elements for associated system sensors or monitoring equipment. or buildings without attic access, or using alternatives to the mounted aluminum framed PV panels (i.e., other PV technologies or ground mount systems), EPA inverters on the market. As a point of reference, the average size of a grid-tied PV residential system

PHOTOVOLTAIC PANEL EQUIPMENT INSTALLATION REQUIREMENTS



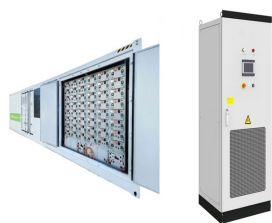
Equipment and Installation Requirements All materials and equipment of the PV system shall be products of manufacturers solar certified under ISO 9001 quality assurance standard. The solar PV system shall be of proprietary product and have test certificates to prove the performance claimed. The PV panels and



All decisions regarding the engineering of a large solar PV power system must be carefully considered so that initial decisions made with cost savings in mind do not result in more maintenance costs and decreased performance later in the system's lifespan. In general, the decisions regarding layout and shading potential, panel tilt angle and orientation, and PV ???



Marley offers training and reliable guidance for solar panel installation teams. Find out about our in-roof solar panels and compatible roofing supplies. Products . Roof Tiles Other equipment. Solar panel installation is the most visible and time-consuming part of a solar system, but there's more to the project than putting panels on the



How much do solar panels cost to install? On average, installing solar panels costs \$2 to \$4 per watt. Most systems for homes come up to \$10,000-\$25,000 after receiving tax credits. The size of the system, quality of the panels and equipment being used, location and difficulty of installation on the roof all affect the final price.



??? After installation, your solar PV company will provide you with an operation and maintenance manual as well as data sheets and warranty information for the components. ??? Make sure your company/installer shows you how the system works and how to operate the system to