

# PHOTOVOLTAIC PANEL FOUNDATION TYPE



Solar panel ground screws are an innovative and eco-friendly foundation solution for solar panel installation. They are made of Q235 steel and are treated with hot-dip galvanizing to resist corrosion and weathering. These screws come in various lengths, tailored to the size of the solar panel system, providing a secure and stable foundation.



Mounting the Panels: Once the screws are securely in place, solar panels are mounted onto them. mermaid; Factors to Consider Before Opting Soil Type. Grasping the essence of your soil type is the key to precision. It ???



This type of connector is perfect for crimping solar wires with any type of length in small, medium, or even large installations that might have a combiner box and a high-capacity battery bank. Helios H4. The Helios H4 is ???



Solar panel brackets are an essential component of any solar panel system. They are used to secure solar panels onto rooftops, ground mounts, or other structures. The brackets are designed to withstand harsh weather conditions and provide a secure foundation for the panels. There are various types of solar panel brackets available in the



These clamps are attached to the joints of a solar panel and are held in place using stainless steel set screws. Using solar rooftop design software, you can easily design your solar mounting framework. 3. Strut Channel for Solar Panel Mounting: Strut channels, along with rails, clamps, and other fittings, are used to aid the cantilever arm in



Ballasts are a type of foundation that is designed to not penetrate into the ground. Instead, heavy materials such as loose stones in containers or concrete blocks are fixed to the PV panels to ensure they stay firmly in place, and in contact ???

# PHOTOVOLTAIC PANEL FOUNDATION TYPE



What Are the Different Types of Ground Mounts for Solar Panels?

Ground-mounted systems have a range of foundation options to hold a rack and solar panel system in place. Standard Ground-Mounted Solar Panel ???



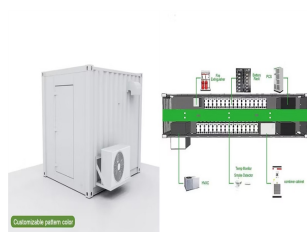
No matter what the ground conditions and constraints on your site, Solarport offers cost-effective and easily assembled solar ground mounts, with foundations that are a perfect fit for every location. Our foundation options work with hard, ???



PV panels mounted on roof Workers install residential rooftop solar panels. The solar array of a PV system can be mounted on rooftops, generally with a few inches gap and parallel to the surface of the roof. If the rooftop is horizontal, the array is mounted with each panel aligned at an angle. If the panels are planned to be mounted before the construction of the roof, the roof can ???

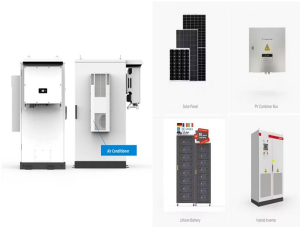


I. Introduction . Welcome to our guide on ground-mounted solar panels! Nowadays, everyone's talking about solar energy, and it's easy to see why 's a clean, green way to power our homes and businesses. While many people think of solar panels as something you put on the roof, there's another option that's gaining popularity: ground-mounted solar panels.



The purpose of a solar panel mount is to serve as a foundation for a solar panel. Mounting systems allow for solar panel arrays to be positioned in the most effective location to maximize the panel's exposure to sunlight. The type of solar panel mounts will vary widely depending on the rooftop or surface type where it is being installed on.

# PHOTOVOLTAIC PANEL FOUNDATION TYPE



Proceedings of the ASCE Joint GT/SEI Conference 2016 Foundation Alternatives for Ground Mount Solar Panel Installations Alan J. Lutenege<sup>1</sup> P.E., PhD, F. ASCE <sup>1</sup>Department of Civil & Environmental



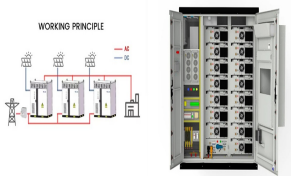
of a solar PV plant. 2. Identify the different types of solar PV structures. 3. Know the unique aspects of solar PV structures and why a Manual of Practice is needed. 4. Learn about some key challenges that the solar PV industry faces including corrosion of steel piles, bolt tensioning, and frost jacking of pile foundations. Learning Objectives



The kit has multiple foundation types and provides a solution for all subsurface conditions. It comes with everything needed to install the racking and is delivered on a 4"x12" pallet. The PV panels are attached with a pull/end clamp combination providing a robust and secure connection to the bucket. Pre-installed bolts on the racking



Download scientific diagram | Categories of typical ground mount solar foundations. from publication: Foundation Alternatives for Ground Mount Solar Panel Installations | | ResearchGate, the



View the complete article here. This guide is tailored for pile driving contractors and engineers involved in solar farm projects???providing an in-depth exploration of the techniques, materials, and challenges associated with pile driving in this growing sector. As the demand for renewable energy increases???solar farms are becoming an ideal market for pile ???

# PHOTOVOLTAIC PANEL FOUNDATION TYPE



The best type of solar panel overall is monocrystalline, as it achieves the best peak power output, efficiency ratings, and break-even point, all while looking good. However, perovskite solar panels are coming for its crown. When they're widely available, they'll revolutionise the market ??? and your electricity bill savings.



Different types of solar panels serve different needs and purposes. Given that sunlight can be used differently whether on Earth or in space points to the fact that location, which affects solar panel angle and direction, is a significant factor when it comes to choosing one of the ???



3. Types of Solar Panel Mounts. Different types of solar panel mounts cater to various installation requirements and environmental conditions. If you understand the different types of mounting, you can choose the most suitable mount for a specific solar project. Fixed Mounts: The Basics



Using concrete foundations above the ground means panels can be disconnected and racking can be moved around, in cases like landfills, where routine inspections need to take place. RBI Solar carries preassembled fixed-tilt racking designed to work with both precast and cast-in-place concrete ballasts.



Foundation options for all Solar PV Ground Mounting System installations. Driven Pile, C Profile, Top Hat Pile, Ballasted, X-Anchor. Our foundations are designed to be versatile, performing effectively across hard, soft, rocky terrains, and in areas where deep piles cannot be driven.



The next step is installing the solar panel array's foundation and support structures. The type of foundation depends on various factors, such as soil conditions and local regulations. Common foundation types include ???

# PHOTOVOLTAIC PANEL FOUNDATION TYPE



ASCE 7 Guidelines. The American Society of Civil Engineers (ASCE) provides guidelines for the structural design of solar panel installations through their publication, ASCE 7 1. These guidelines cover the essential factors that influence solar panel installations, such as wind loads, snow loads, and dead loads, to ensure the safe and efficient operation of these ???



Roof Types: The Foundation for Solar. The type of roof material and shape (roof pitch) you choose will affect how long and well your solar panels work and how easily they can be fixed. Let's see some common examples of roof types. Tips for Homeowners to Ensure Successful Solar Panel Installation Maximizing Solar Efficiency.



Foundation: Depending on the type of mount (ground or roof), the foundation could involve concrete bases, pole mounts, or secure attachments to a building's structure. The Significance of Precision and Durability. By understanding the basics and types of solar panel mounting structures, professionals in the solar industry can make



The effective collection area of a flat-panel solar collector varies with the cosine of the misalignment of the panel with the Sun.. Sunlight has two components: the "direct beam" that carries about 90% of the solar energy [6] [7] and the "diffuse sunlight" that carries the remainder ??? the diffuse portion is the blue sky on a clear day, and is a larger proportion of the total on ???



Example calculation: How many solar panels do I need for a 150m 2 house ?. The number of photovoltaic panels you need to supply a 1,500-square-foot home with electricity depends on several factors, including average electricity consumption, geographic location, the type of panels chosen, and the orientation and tilt of the panels. However, to get a rough ???

# PHOTOVOLTAIC PANEL FOUNDATION TYPE

---



Selecting the right foundation for a ground-mounted solar PV installation is critical for its success as the use of an incorrect foundation can result in premature refusal, costly change orders and project delays. Selection ???



A PV cell, or Solar Cell, is the foundation of the production of solar power, and its incorporation into larger PV modules highlights its essential function in the clean energy sector. What Is the Importance of a Photovoltaic Module? No, a photovoltaic module is not a type of solar panel but a synonym for "solar panel."



8 types of foundations commonly used in photovoltaic brackets. A reasonable form of photovoltaic support can improve the system's ability to resist wind and snow loads, and the reasonable use of the characteristics of the photovoltaic support system in terms of bearing capacity can further optimize its size parameters, save materials, and contribute to the further ???



Solar panel installation: used to secure panels to mounts. Connecting mount components: for joining various sections when constructing mounting structures. Ground mount securing: connects mounts securely to concrete or other types of foundations. Roof installations: ensures stability of mounts on rooftops, especially on sloped roofs.