

PHOTOVOLTAIC PANEL GAP ADJUSTMENT TUTORIAL



How much gap should be between solar panels? The gap between the last row of solar panels and the roof's edge should be a minimum of 12 inches or one foot. This ensures the panels are accommodated as they expand and contract during the day. See also: Mounting Solar Panels: A Complete Beginner's Guide to Installation How Much Gap Should Be Between Two Solar Panels?



How to optimize the tilt angle of solar panels? Optimizing Tilt Angles: The tilt angle of solar panels should be optimized based on the latitude of the installation site and the seasonal sun paths. This optimization directly influences the required spacing between rows of panels.



What factors determine the optimal spacing for solar panels? Several critical factors play into determining the optimal spacing for solar panels: Panel Size and Configuration: The dimensions of the panels and their layout (landscape or portrait) directly influence how much space is needed between rows.



How to optimize solar panels? Inter-row Shading Analysis: Utilizing tools and software for shading analysis can help in accurately determining the optimal row spacing, ensuring minimal shading while maximizing land use. Optimizing Tilt Angles: The tilt angle of solar panels should be optimized based on the latitude of the installation site and the seasonal sun paths.



Why is solar panel spacing important? Understanding solar panel spacing is a critical component in the design and installation of efficient solar arrays. It requires a careful consideration of various factors, including panel size, geographical location, tilt angle, and seasonal variations in sun path.

PHOTOVOLTAIC PANEL GAP ADJUSTMENT TUTORIAL



How much space should be between two solar panels? It is best to leave four to seven inches of space between two solar panels. Again, this accommodates the solar panels' expansion and contraction during the day. How Much Gap Should Be Between Solar Panel Rows?



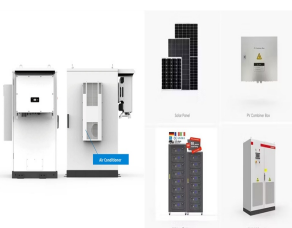
The charge controller rating should be 125% of the photovoltaic panel short circuit current. In other words, It should be 25% greater than the short circuit current of solar panel. Size of solar charge controller in amperes = Short-circuit current of PV x 1.25 (Safety factor). For example, we need 6 numbers each of 160W solar panels for our



The PERC solar panel is a highly efficient and improved type of PV technology that uses Crystalline Silicon (c-Si) and fixes some inconveniences of this traditional technology. In this article, we will do a deep and detailed analysis of what is a PERC solar panel, how it compares to older and other advanced technologies, as well as the different applications for ???

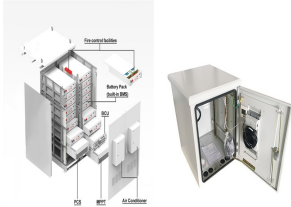


When designing a PV system that is tilted or ground mounted, determining the appropriate spacing between each row can be troublesome or a downright migraine in the making. Good write up, Does this equation for determining ???

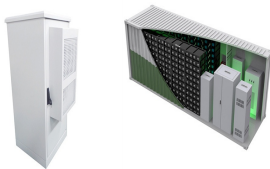


The power output of a photovoltaic solar cell is given in watts, and is equal to the product of voltage times the current with the average power output of a typical photovoltaic solar cell being around 2 watts, so to create a photovoltaic panel of 100 or 200 watts individual pv cells need to be connected together in a series and/or parallel combination to give any desired voltage, current ???

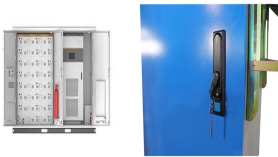
PHOTOVOLTAIC PANEL GAP ADJUSTMENT TUTORIAL



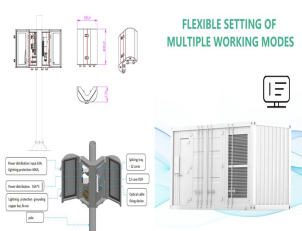
Thin but ventilated air gap between the PV back-panel and the roof shingles helped remove the heat, while the adhesive pads (patches) served as thermal bridges between the PV module and the roof.



Power output for solar panel systems highly depends on solar radiation incidence over the photovoltaic (PV) modules. Installing fixed solar panels might prove profitable in many locations, but ignoring the tilt angle change of the Earth across the year will reduce the performance of the same solar panel system across the seasons.



Photovoltaic (PV) technology has witnessed remarkable advancements, revolutionizing solar energy generation. This article provides a comprehensive overview of the recent developments in PV



Solar Module Cell: The solar cell is a two-terminal device. One is positive (anode) and the other is negative (cathode). A solar cell arrangement is known as solar module or solar panel where solar panel arrangement is known as ???



The power output of a photovoltaic solar cell is given in watts, and is equal to the product of voltage times the current with the average power output of a typical photovoltaic solar cell being around 2 watts, so to create a photovoltaic panel of 100 or 200 watts individual pv cells need to be connected together in a series and/or parallel combination to give any desired voltage, current ???

PHOTOVOLTAIC PANEL GAP ADJUSTMENT TUTORIAL



The control system's ability to continuously monitor and adjust the solar panel's position based on the sun's position ensures optimal energy capture throughout the year. By dynamically



When designing a PV system that is tilted or ground mounted, determining the appropriate spacing between each row can be troublesome or a downright migraine in the making. However, it is essential to do it right the first time to ???



PV panel supports Upper stop of the module Overlapping area graduation
Height tolerance Width tolerance Portrait frame references ??? Module sizes
WARNING WHEN INSTALLING THE : UPPER ROWS, ADJUST SO THAT ONE ROW COVERS THE OTHER USING THE GRADUATIONS BASED ON THE LENGTH OF THE MODULE (IE DEVICE). 3. Installation 18



Tilted PV panels cast shadows on rows of modules behind them, necessitating a gap between rows to minimize the effects of production loss due to shadows. Here are a few ideas to mitigate the impacts of this phenomenon on your PV installation:



Solar panels on a roof (Image by Stefano from Pixabay) Solar panel efficiency. Efficiency is a measure of how much of the sun's potential energy a panel will convert into solar power. Most panels have an efficiency rating of between 15-23%. ???

PHOTOVOLTAIC PANEL GAP ADJUSTMENT

TUTORIAL



Discover the essential role of band gaps in solar cells and why an optimal band gap of approximately 1.5 eV is crucial for efficiency. (within the PN junction of the solar panel) to the conduction band (external circuit, such as a battery). ???



In the above example, you only had to deal with a single solar panel. In real life, this is mostly not the case. You may come across multiple strings as well. A solar panel array has more than one branch or strings connected in parallel, consisting of solar panels, bypass diodes, and blocking diodes.



Solar Power Modelling#. The conversion of solar irradiance to electric power output as observed in photovoltaic (PV) systems is covered in this chapter of AssessingSolar .Other chapters facilitate best practices in how to obtain solar radiation data, how to apply certain quality checks to the data or how to manipulate and assess timeseries of solar data for solar resource assessment.

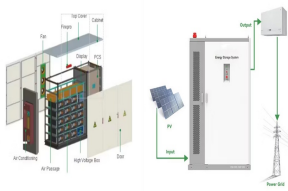


(1) Background: As environmental issues gain more attention, switching from conventional energy has become a recurring theme. This has led to the widespread development of photovoltaic (PV) power generation systems. PV supports, which support PV power generation systems, are extremely vulnerable to wind loads. For sustainable development, corresponding ???



The operating point (I , V) corresponds to a point on the power-voltage (P-V) curve, For generating the highest power output at a given irradiance and temperature, the operating point should such correspond to the maximum of the (P-V) curve, which is called the maximum power point (MPP) defined by (I_{mpp} * V_{mpp}).

PHOTOVOLTAIC PANEL GAP ADJUSTMENT TUTORIAL



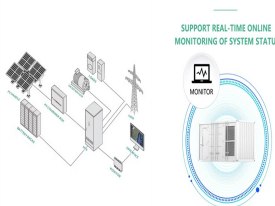
Defects in photovoltaic (PV) panels can significantly reduce the power generation efficiency of the system and may cause localized overheating due to uneven current distribution. Therefore, adopting precise pixel-level defect detection, i.e., defect segmentation, technology is essential to ensuring stable operation. However, for effective defect ???



The rapid growth and evolution of solar panel technology have been driven by continuous advancements in materials science. This review paper provides a comprehensive overview of the diverse range of materials employed in modern solar panels, elucidating their roles, properties, and contributions to overall performance. The discussion encompasses both ???



The brackets holding the solar panel to the surface; The actuator that lifts the solar panel (often contains the computer component) The rotation between the frames allows the solar panel to tilt. Solar Panel Tilting Brackets. The brackets are the lift frame and securely fasten the solar panel to the surface to which it is attached.



All solar panel strings connected in parallel have to feature the same voltage, and they also have to comply with the NEC 690.7, NEC 690.8(A)(1), and NEC 690.8(A)(2). Modules need to be the same model in all cases in order to ???



Under the vertical gaps, the guttering is touching the frames of the solar panels, and I simply drilled a hole on each side of the guttering at both ends, and then put small cable ties through the holes, and through the holes that happened to ???

PHOTOVOLTAIC PANEL GAP ADJUSTMENT TUTORIAL



Solar Panels perform at optimum capacity when placed in direct sunlight. When you install your Solar Power system, try to position your photovoltaic panels directly under the noontime sun for maximum efficiency from your photovoltaic unit.. Before Installation, take care of any obstructions to sunlight. Remove all unnecessary obstructions and items such as ???



Field measurements of a representative sample of PV modules may show that the PV module powers are different than the nameplate rating or that they experienced light-induced degradation upon exposure (even crystalline silicon PV modules typically lose 2% of their initial power before power stabilizes after the first few hours of exposure to sunlight).



Solar photovoltaic (PV) energy systems are one of the most widely deployed renewable technologies in the world. The efficiency of solar panels has been studied during the last few decades, and, to date, it has not been possible to displace the production of energy using crystalline silicon wafer-based technology whose efficiency has reached values around 26.1%. ???



A gap of approximately 10-15 cm is recommended to prevent shading issues between panels. Proper adjustment of the panel tilt angle according to geographic location can enhance energy efficiency. solar panel installations are regulated by the Federal Building Code (BauGB) as well as state-specific building regulations and the Renewable



Welcome to a beginner's guide on solar power basics, where we will walk through a solar electric power system and how to build one ??? Solar panels, batteries, charge controllers, and inverters. Having built one by myself, I can easily see how this unlimited renewable energy source is quickly being adopted by cities worldwide.

PHOTOVOLTAIC PANEL GAP ADJUSTMENT

TUTORIAL



$N \text{ modules} = \text{Total size of the PV array (W)} / \text{Rating of selected panels in peak-watts}$. Suppose, in our case the load is 3000 Wh/per day. To know the needed total W Peak of a solar panel capacity, we use PFG factor i.e. $\text{Total W Peak of PV panel capacity} = 3000 / 3.2 \text{ (PFG)} = 931 \text{ W Peak}$. Now, the required number of PV panels are $= 931 / 160\text{W} = 5.8$.



2. Attach the Fixing Bracket to the Solar Panel. Once you've gathered all the tools and followed up on permits and safety requirements, it's time to set up your mounting system. The first step is to attach the fixing bracket to the solar panel. Lay the solar panel face-down on the tarp or canvas to protect the photovoltaic surface.



When installing solar panel systems, it is crucial not only to consider the spacing between panels and installation angles but also to comply with local government and regulatory requirements concerning the distance between solar panels and property boundaries.