

PHOTOVOLTAIC PANEL INSTALLATION

LIGHT BULB REQUIREMENTS



What are the requirements for a PV installation? Virtually all domestic PV installations will fall under the scope of Part P. Part P requires the relevant Building Control department to be notified and approve the work. There are two routes to comply with the requirements of Part P: Notify the relevant Building Control department before starting the work.



What are the requirements for solar panel installation? diate enforcement action by HSE inspectors??? Solar panel installation is not short duration work and ill need scaffolding or similar equipment.??? It should have a boarded working platform and full edge protection (double guard-rails and toe-boa ds) to stop people and tools from falling. Debris netting may also be necessary to prevent materials



Do you need planning permission to install solar panels on your roof? An increasing number of people are investing in solar energy. More and more homes are having solar panels, or solar tiles, installed on their roofs. Of course, with such installations, the topic of planning permission and building regulations often comes to the surface.



Are there building regulations for solar panels? There are building regulations for solar panels,as there are for most home improvements. These government regulations are frequently updated to ensure that any alterations made to properties don't threaten the safety or health of people who live or work in them.



How to install solar panels? To begin, installing solar panels necessitates extensive knowledge of solar technology and fundamental electrical and engineering skills. In other words, you should probably avoid DIY Solar Panel Installation and instead hire professional local installers. The second factor to consider is that Solar Panel Installation will take time.

PHOTOVOLTAIC PANEL INSTALLATION LIGHT BULB REQUIREMENTS



Do I need a building regulations certificate for my solar panel system? You should receive a building regulations certificate, known as a completion certificate, for your solar panel system. This certificate will assure you and any future owners that the work met all building regulations, which will make it much easier to sell your property at any point.



The recently announced publication of UL 8801, the Standard for Photovoltaic (PV) Luminaire Systems, provides the requirements for PV luminaires and their systems as a basis for certification. The Standard addresses the output of power ports and requirements for connecting a supplemental utility power source.



By day, you love spending time in there, but by night, you're back in your home since your shed doesn't get any power or light. Your shed is too far from the house to run a cable, which is why you were thinking of using solar power and solar panels instead. How much solar power do you need for your shed?



Solar PV panels typically range between 15% and 24.5%. Higher efficiency panels will produce more electricity in a smaller space. Solar panels are efficiency rated based on their output in watts under standard test conditions (STC). Solar panel efficiency is implicitly considered in the wattage rating of the panel.



To find the solar panel output, use the following solar power formula:
$$\text{output} = \text{solar panel kilowatts} \times \text{environmental factor} \times \text{solar hours per day}.$$

The output will be given in kWh, and, in practice, it will depend on how sunny it is since the number of solar hours per day is just an average.

PHOTOVOLTAIC PANEL INSTALLATION

LIGHT BULB REQUIREMENTS



??? Solar panel installation is not short duration work and will need scaffolding or similar equipment. ??? It should have a boarded working platform and full edge protection (double guard- rails and ???



The installation of solar street lights involves several key steps, from preparing the site to installing solar panels, battery boxes, lamp posts, and LED lights. In this blog, we will discuss the step-by-step process of installing a ???



The FAA guidance on this topic states: solar PV employs glass panels that are designed to maximize absorption and minimize reflection to increase electricity production efficiency. To limit reflection, solar PV panels are constructed of dark, light-absorbing materials and covered with an anti-reflective coating.



Overview: Technical Standards ???Key South African Documents
 ???NRS 097 (Industry Specifications) ???SANS 10142-1-2 (Wiring Standard for SA) ???RPP Grid Code (Required by NERSA) ???NRS 052 / SANS 959 (Off Grid PV systems) ???NRS 048 (Power Quality)
 ???International Documents ???IEC 62109: Safety of power converters for use in photovoltaic power systems



See also: type of wire used for solar panels? (Best + Installation) Is it difficult to install solar panels yourself? It is not overly difficult to install solar panels. They fit onto a frame and then are fastened into place. However, installing the entire solar array can be more challenging, especially if you do not have electrical wiring

PHOTOVOLTAIC PANEL INSTALLATION

LIGHT BULB REQUIREMENTS



III. Exploring Battery Storage Systems . Battery storage systems play a crucial role in maximising the benefits of residential solar panels. While solar panels generate electricity during daylight hours, battery storage allows homeowners to store excess energy for later use, even when the sun is not shining.



Construction Manager The construction manager is responsible for the work execution in compliance with the approved method statement, HSE Risk Assessment, and project specification, issued for construction drawings, sections, and details.. Site Engineer The site engineer is responsible to carry out the work as per approved shop drawings and method ???



The structure of a roof that supports solar photovoltaic panels or modules shall be designed to accommodate the full solar photovoltaic panels or modules and ballast dead load, including concentrated loads from support frames in ???



??? Solar panels that produce electricity are known as solar photovoltaic (PV) modules. These panels generate electricity when exposed to light. Solar PV is the rooftop solar you see in homes and businesses. Solar electric panels capture the light from the sun and convert it into the electricity that is



6 CleAn enerGy StAtes AlliAnCe S StAinAIE SOIAr EcAtiOn prOEct inspectors, permitting staff, fire marshals, and other personnel lack the training and other support to correctly and consistently apply code standards.

PHOTOVOLTAIC PANEL INSTALLATION LIGHT BULB REQUIREMENTS



The energy requirements influence the type of PV installation, based on whether the home will be partially or completely disconnected from the main grid. Going off the grid would necessitate the installation of additional and more powerful ???



Understanding how to set up solar panels for shed is a game-changer for many homeowners. Solar energy not only offers an eco-friendly power source but also transforms sheds into fully functional workspaces, studios, or retreats. In this guide, we'll outline the essential steps, from sizing your solar panels to the installation process, ensuring you harness the sun's power ???



The comprehensive guide on DIY solar lighting installation. In this step-by-step guide, we will walk you through the process of setting up your own solar lighting system. With the increasing popularity of solar power and the environmental benefits it offers, many homeowners are turning to solar lighting as an energy-efficient and cost-effective solution.



Elevation - the optimal elevation for a photovoltaic installation is 40° from horizontal. This has been calculated to give you the maximum exposure during all seasons i.e. the low sun in winter and the high sun in summer. Most standard pitched roofs are around 35°. Tracking systems are available which move the panels to track the Sun throughout the day to give you the best ???

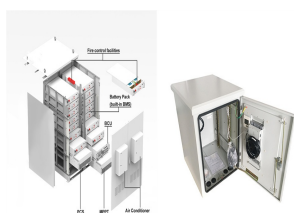


A PV system is an additional power source which supplies the electrical installation, and can be arranged to operate as a switched alternative (standby) to the mains supply, or used as a stand alone system to supply an ???

PHOTOVOLTAIC PANEL INSTALLATION LIGHT BULB REQUIREMENTS



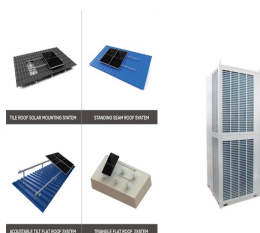
For more information on installing solar panels on your roof, check out our article on installing solar panels on roof. Installation Process for Roof-Mounted Solar Panels. To successfully install roof-mounted solar panels, a systematic approach is required.



6 Product and installation standards and test methods for microgeneration systems 28 6.1 PV systems 29 6.2 Solar thermal systems 31 6.3 Microwind turbines 32 Annex Simplified method for determining wind loads on roof-mounted photovoltaic, 34 solar thermal and microwind turbines A.1 Simplified method for PV and solar thermal systems 34



Photovoltaic (PV) panels are a common sight on the roofs of domestic properties, in towns and cities across the UK. The installation of PV supply systems are carried out by contractors who are registered to undertake microgeneration work (systems up to 16 A). The systems being installed in accordance with the relevant requirements of BS



To determine the correct type and size of solar lighting needed, you must determine how and when you want these lights to provide light. Do you require full-strength light for security or display lighting, or do you require soft ???



All customers planning to install solar/photovoltaic panels must meet GP&L's Solar Generation Installation Requirements. These requirements help ensure the safety of the linemen who work on our electric system.

PHOTOVOLTAIC PANEL INSTALLATION LIGHT BULB REQUIREMENTS



The product and installation cost of solar panels to power a shed will be minimal in comparison to digging up the garden to install reinforced cables run from the mains. A simple lighting and power system can cost under £300 (like this one from Posh Shed Company) while hiring an electrician to wire a shed will cost significantly more.



Fig ??? 100A, 12-48V, Max 170A, 150V, MPPT Charge Controller (3) Battery. Batteries are used for backup charge storage. there are different types of batteries used in solar power system for storage and backup operation at overnight when the direct power from solar panels are not available. Series, parallel or series-parallel connection of batteries bank is ???



In this guide, we'll explain which building regulations apply to solar panels, how they differ from planning permission, and how to ensure your installation complies with them. If you would like to see the savings you could ???



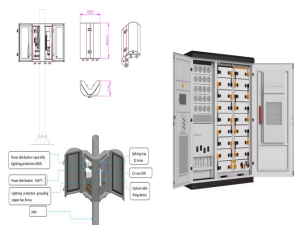
Solar panel installations have to pass standard building regulations for the property - it's a legal requirement for many home improvements. The key areas are structural safety of a building ???



Aside from helping you properly install the PV system, it is a great method to detect any solar panel that might have a factory defect or if there is a loose connection. High-Efficiency Bifacial 585W 600W 650W PERC HJT Solar PV Panels. JA Solar 450W 460W 470W Mono PERC 182MM Photovoltaic Panels meaning no action needed. When I plug in a

PHOTOVOLTAIC PANEL INSTALLATION

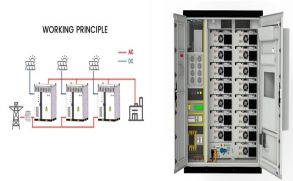
LIGHT BULB REQUIREMENTS



Photovoltaic panels collect energy from sunlight and convert it into renewable electrical energy that can be used to power lights and appliances in your new home. As a self builder, you are in an excellent position to incorporate the system into your house design and generate electrical power without producing any CO₂.



PV panel systems, i.e. those where the PV panels form part of the building envelope. ??? MIS3002 The Solar PV Standard (Installation) Solar Photovoltaic Systems (referred to within this document as the IET PV Code of Practice) ??? BS EN 62446-1:2016 Photovoltaic (PV) systems ??? Requirements for testing, documentation and maintenance



Solar Panel Mounts are used to install photovoltaic panels. These mounts are available in 3 main types: Pole mounts; Roof-ground mounts; and Blog Regarding Solar panels. it is the most eco-friendly and money ???