

PHOTOVOLTAIC PANEL INSTALLATION SLIPPERY



What are the risks of installing a solar PV system? The installer is also faced with the dangers of handling potentially large and heavy equipment at heights as well as ensuring that the installation of a solar PV system does not have a negative impact on the strength and integrity of the buildings structure (often a roof) where the system is to be mounted. All articles



Are solar PV installations safe? Working with solar PV energy systems, which provide large amounts of power, some of which are off-grid systems, demands that the general photovoltaic safety rules are followed to minimize risk of injury or harm. Here are our top tips for practicing safety in solar installations. 1. Prevent a Fall



Who should install a solar PV system? The solar PV system installation must be carried out by a licenced electrician experienced in the specific work. ensure that risks associated with manual handling are controlled. to the customer and Fair Trading for installation, alteration or replacement of an electricity meter.



Can a solar PV installation be a 'permitted development'? A solar PV installation can be classed as 'permitted development' subject to conditions and when not located within a conservation area, AONB or world heritage site. After a number of years exposed to wind, rain, snow, ice and sometimes animals; solar panel systems can start to develop faults.



What are the requirements for a solar PV system installation? **SAFE INSTALLATION OF THE SOLAR PV SYSTEM** When conducting solar installations there are specific requirements that must be complied with during the installation. The solar PV system installation must be carried out by a licenced electrician experienced in the specific work. ensure that risks associated with manual handling are controlled.

PHOTOVOLTAIC PANEL INSTALLATION SLIPPERY



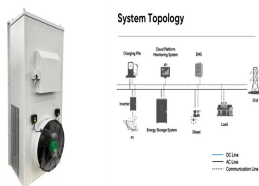
Who is involved in the installation of solar PV systems? Installation staff or contractors are involved in the direct installation of solar PV systems. Installers must have sufficient knowledge, qualifications, equipment, skills and safe systems of work to comply with the work health and safety legislation. Installers must implement adequate supervision to ensure that workers are undertaking work safely.



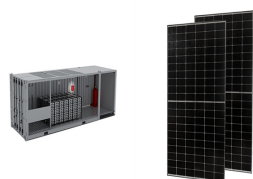
DIY Solar Panel Installation is a great way to produce renewable energy and lower your energy bills. Read our guide on how to install solar panels yourself. Skip to content. 8.00am - 4.00pm; 01903 213141; Home; About; Contact; News/Blog; FAQ. 12v solar panel kit instructions;



The slippery roof design factor is used with unobstructed smooth and slippery surfaces such as sheet metal (commonly found on farm buildings) or glass to reduce the total roof design load, where the slope of the roof allows. Figure a?]



1 . A Solar Panel Installation Calculator is an interactive tool designed to help users estimate the number of solar panels needed, potential cost savings, and energy output based on specific inputs. As the world moves towards more sustainable energy solutions, solar panels have become a pivotal element in reducing carbon footprints and harnessing renewable energy.

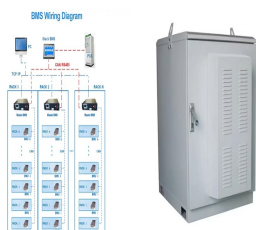


Less efficient panels cost less and will reduce the overall cost of your system. How long does a solar panel last? Most manufacturers guarantee their panels will be at least 80% efficient for 25 years. That's not to say the panels will break down after 25 years. They will keep working, but with reduced power output.

PHOTOVOLTAIC PANEL INSTALLATION SLIPPERY



Microinverters optimize each solar panel individually, so even if some solar panels are covered in snow, others will still pump out electricity. With the standard string inverter that most homeowners have, if just a handful of their panels are covered in snow (or shaded in any other way), the entire solar installation's production decreases drastically, even if there are a?



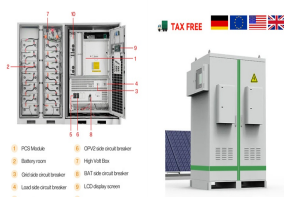
Installation Manual for PV Modules INSTALLATION AND USER MANUAL FOR SHARP PHOTOVOLTAIC MODULES ND-255QCS / ND-250QCS / ND-245QCS Do not stand or step on the PV module. The glass may be slippery, and there is a risk of injury or electric shock if glass is broken. 3. Do not hit or put excessive load on the glass or back sheet. PV cells



See also: How Long Does it Take to Install Solar Panels? A Complete Guide. Step 6: Ground the System, including the Panels and the Mounting System. See also: DIY Solar Panel Installation: A Comprehensive Step-by-Step Guide. Do I need to ground my solar panels? Yes. You must ground the solar array and each of the solar components.



Slippery conditions increase the risk of accidents. So gear up, stay safe, and get ready for an energy-efficient future with your solar panels! Solar Panel System Health Check. Before removing and reinstalling your solar panels, it's smart to perform a health check. This helps ensure everything works like a charm after the reinstallation



PV panel systems, i.e. those where the PV panels form part of the building envelope. While commercial ground-mounted PV systems are not covered in detail in this guide, the risk control principles discussed are similar. Hazards to PV installations other than fire a?? such as theft and flood a?? are mentioned for

PHOTOVOLTAIC PANEL INSTALLATION SLIPPERY



On the other hand, there are Solar Panel cleaning kits available in the market today. If you have the budget to invest in your cleaning tools, there are some quality products you can choose from. A typical Solar Panel cleaning kit includes hose interconnections, cloths, brushes, carrying bags, and extension poles. [Cleaning Solar Panels Overview](#)



Read this article to discover everything you need to know about installing a photovoltaic system in Cyprus. +357 26 941 555 info@greenair-cy Mon - Fri: 08:00 - 18:00 HOME; ABOUT; During the installation process, the photovoltaic panels are mounted on the roof or on a ground-mounted system, and the wiring and electrical components are



For more information on solar panel installation, check out our article on installing solar panels on roof. Maintenance and Care for Roof-Mounted Solar Panels. Once your roof-mounted solar panels are installed and a?



Installing solar panels. The introduction and rapid expansion of solar technology has brought with it a number of occupational hazards for workers responsible for panel installation. Guidelines for safe solar panel installation exist, [1] however the injuries related to panel installation are poorly quantified.. There is concern for long term health effects acquired from prolonged ultraviolet



Case Study: solar panel installation for an average UK home a?c House type: Semi-detached a?c Solar panels: polycrystalline 4kW a?c Number of panels: 10-14 a?c Solar panel cost, including installation: GBP7000.00 (Actual price ranges from GBP5,000 to GBP9,000) a?c Estimated annual output: 3600 kWh (South of the UK) a?c Estimated Smart Export Guarantee Tariff: GBP50.00 (SEG a?|

PHOTOVOLTAIC PANEL INSTALLATION SLIPPERY



For our solar panel, we will assume that our solar panel is classified as "Slippery surface. With just a few inputs, it will automatically design the solar panel system for you. You can check our API documentation through this link. Figure 20. Our custom solution for solar panel created for MT Solar using SkyCiv API.



In this guide, we'll explain a typical solar panel installation from start to finish, as well as what all the hardware does, and where on your property you can install the panels. If you're interested in how much you could save with a solar & battery system, click the button below, enter a few details, and we'll generate an estimate.



The weight of the system supported by the structure will be 156kg (i.e. 26kg x 6 PV panels). Example 2: how to measure "average weight" If the area of the ground/slab covered by the PV system is 10m², the average weight of the system supported by the structure will be 15.6kg/m² (i.e. 156kg / 10m² slab area).

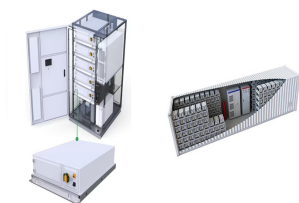


Slippery Surfaces: Rain can make rooftops slick, increasing the likelihood of installers slipping and falling. Electrocutation: Solar panel installation involves connecting electrical wires and components. If these components get a?|



Solar Panels Installation Guide: To help you understand a retrofit installation of solar photovoltaic panels we have broken it down into its individual stages. If you would like more information about solar panel installations or would prefer to speak to someone you can contact us a?|

PHOTOVOLTAIC PANEL INSTALLATION SLIPPERY



Secondly, when choosing photovoltaic panels, pay attention to their resistance to intense storms. Thirdly, extend your home insurance to include photovoltaic panels, and you will be protected against hail, vandalism, and a?



A building-integrated photovoltaic (BIPV) facade system designed to harness the power of the sun, stand up to the harshest of climates, and bring unparalleled design flexibility to your building. Solstex panels are the photovoltaic (PV) industry's most eco-efficient. High-Efficiency Solstex panels deliver significantly



Photovoltaic (PV) systems are one of the most important renewable energy sources worldwide. Learning the basics of solar panel wiring is one of the most important tools in your repertoire of skills for safety and practical reasons, after all, residential PV installations feature voltages of up to 600V.



Among them, the photovoltaic-thermal system is a typical one. Li et al. proposed a pavement integrated photovoltaic pavement (PIPVT) system and developed its relevant mathematical model [71]. Based on the real meteorological data in Shanghai, the simulation results showed 0.62 kWh of electricity and 1.36 kWh of heat could be generated by two



A photovoltaic system is a set of elements that have the purpose of producing electricity from solar energy. It is a type of renewable energy that captures and processes solar radiation through PV panels.. The different parts a?|

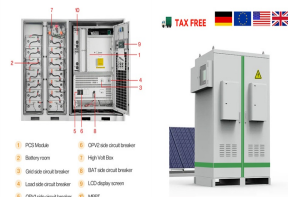
PHOTOVOLTAIC PANEL INSTALLATION SLIPPERY



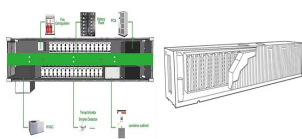
A 3.5 kWp solar panel system would typically require around 10 solar panels (at 350 W each) and cost between GBP5,000 and GBP10,000. *kWp stands for "kilowatt peak". This is the amount of power that a solar panel or array will produce per hour in prime conditions.



But when solar panels are installed on the roof, those large panels of glass diminish friction and are rather slippery. As snow collects on your solar panels, it may become compacted. And while the average solar panel is equipped to and the number of solar panels you install. The average snow guard runs \$1.50-\$3.00 per foot with



Technical drawings showing installation of integrated solar PV and solar thermal panels in slate and tile roofs and solar thermal plumbing systems. Toggle navigation. About. PV16 - Solar PV Panels - Landscape- Integrated Pitched Roof: 000: 14.02.17: 10.011.d: Clearline Fusion - PV16 - Landscape - Integrated Pitched Roof - Array Dimensions



Only licensed roofers should install UNI-SOLAR PV membrane roofing products. UNI-SOLAR PV membrane roofing products are slippery, especially when wet. Use extreme caution and proper safety gear when working on or near the panels. Do not place equipment on PV laminates.