

PHOTOVOLTAIC PANEL LAMP WATTAGE CALCULATION



Monocrystalline solar panels. They comprise monocrystalline silicon cells, which offer high efficiency and a neat aesthetic (black-colored cells). Their dimensions vary depending on the power, but they are generally found in rectangular formats (160 x ???



Adequate solar panel planning always starts with solar calculations. Solar power calculators can be quite confusing. That's why we simplified them and created an all-in-one solar panel calculator. Using this solar size kWh calculator, together with savings and payback calculator, will give you an idea of how to transition to a solar panel-based system for your house.



Now you can just read the solar panel daily kWh production off this chart. Here are some examples of individual solar panels: A 300-watt solar panel will produce anywhere from 0.90 to 1.35 kWh per day (at 4-6 peak sun hours locations).; A 400-watt solar panel will produce anywhere from 1.20 to 1.80 kWh per day (at 4-6 peak sun hours locations).; The biggest 700 ???

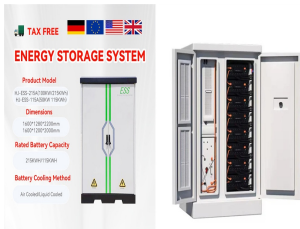


Summary. You need around 200-400 watts of solar panels to charge many common 12V lithium battery sizes from 100% depth of discharge in 5 peak sun hours with an MPPT charge controller.; You need around 150-300 watts of solar panels to charge many common 12V lead acid battery sizes from 50% depth of discharge in 5 peak sun hours with an ???

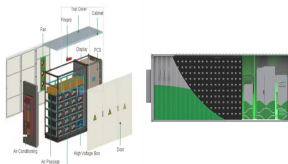


Watt hour rating: Watts: 26: Nominal Panel Voltage Approximate Solar output: 16 Volts: 27: Amps required from solar panels Total daily consumption: 15 Amps: 28: Peak amperage of solar panel Watts divided by Volts Amps: 29: Number of solar panels in parallel Raw Number 30: Number of panels in series (12 V) it is 1 for 12v, 2 for 24v, etc 31

PHOTOVOLTAIC PANEL LAMP WATTAGE CALCULATION



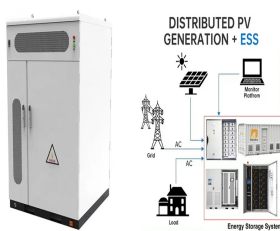
A 12v 150 watt solar panel will produce about 18.3 volts and 8.2 amps under ideal sunlight conditions. (inc. 1kw/m² of sunlight intensity, no wind, and 25 o C temperature). The above values are based on DC (Direct current) output, but to run most of the household appliances we need AC (Alternating current)



The solar panel calculator helps to figure out how many solar panels you need and determine the right system size and roof area requirements for your system. Here peak sun hours mean the time at which the light of the sun equals 1000 watts per square meter. In most parts of the United States, you will probably get six peak hours in a day.



Formula to calculate PV energy. How to calculate annual output energy of a solar photovoltaic (PV) system? The simplest formula is : Where : E = electric energy PV production (kWh/year) Hi = global incident radiation (kWh/m²/year) Pstc = sum of peak power at STC conditions of photovoltaic solar panels (kWp) PR = Performance ratio of the solar



How to Use This Calculator. 1. Find the technical specifications label on the back of your solar panel. Note: If your panel doesn't have a label, you can usually find its technical specs in its product manual or on its online ???



Calculate how much power you need with these solar calculators to estimate the size and the cost of the solar panel array needed for your home energy usage. Toggle menu. Solar power made affordable and simple The calculation uses solar hours per day for each location using the PV Watts calculator with these design input standards: Module

PHOTOVOLTAIC PANEL LAMP WATTAGE CALCULATION



Solar Panel Calculator is an online tool used in electrical engineering to estimate the total power output, solar system output voltage and current when the number of solar panel units connected in series or parallel, panel efficiency, total area ???



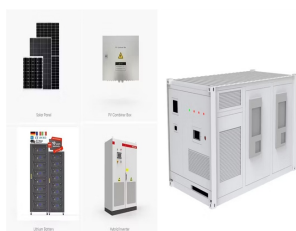
DIY Solar Panel Kits; Solar Lighting Systems; Flexible; DIY Solar Panel Installation Guide; Off-Grid. Systems. Kits by Wattage. 100w - 500w Off-Grid Solar Kits; 500w - 1kw Off-Grid Solar Kits; Off-grid Solar Power System Calculator.



Calculate Total Solar Panel Area (m²): Once you know the total power, divide it by the power and area of a single solar panel to find out how many panels and how much space you need. Keep in mind that this is a rough estimate and factors like shading, tilt angle, and panel orientation can also affect the performance of your solar panel system.

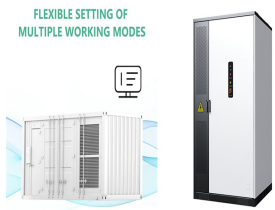


This will give you a total watts draw value. eg. You have a shed light that you wish to run on solar. The bulb uses 11w. You wish to use it for 20 hours a week. $11 \times 20 = 220w$. Please be sure to take this into account when calculating and using our 12v solar panel calculator.



If you're planning to cut your energy bills and help the climate by getting solar panels on your roof, you'll want to know exactly how much electricity they can produce and which is the most efficient solar panel. Learning about solar panel output can also help you pick the right-sized system, reducing solar panel costs in the long run

PHOTOVOLTAIC PANEL LAMP WATTAGE CALCULATION



Use our solar panel calculator to get an idea of how much you could save by installing a solar photovoltaic (PV) system at home. Use the calculator . Based on the information you provide, the solar panel calculator will estimate: What size solar panel system is right for you. How much you could save on your electricity bills.



Solar Panel Sizing. If you go shopping for a solar panel system, you'll notice that each solar panel size is rated according to the maximum amount of energy they will be able to produce at full capacity. The size rating for each solar array usually goes from about 100 watts to as much as 3,000 watts or higher.



If you reside in an area that receives 5 hours of maximum sunlight and your solar panel has a rating of 200 watts, the output of your solar panel can be calculated as follows: Daily watt hours = $5 \times 200 \times 0.75 = 750\text{Wh}$. That means a solar panel that has a capacity of 200 watts can produce approximately 750 watt-hours. Solar Panel Efficiency



46. Solar Panel Life Span Calculation. The lifespan of a solar panel can be calculated based on the degradation rate: $L_s = 1 / D$. Where: L_s = Lifespan of the solar panel (years) D = Degradation rate per year; If your solar panel has a degradation rate of 0.005 per year: $L_s = 1 / 0.005 = 200$ years 47. System Loss Calculation



For example, a 100-watt light bulb used for 5 hours consumes 500 watt-hours. Sum Total Consumption: Add up all the watt-hours from each device to determine your total daily energy consumption. If your total equals 3,000 watt-hours, this is your daily energy need. How to Calculate Solar Panel Requirements.

PHOTOVOLTAIC PANEL LAMP WATTAGE CALCULATION



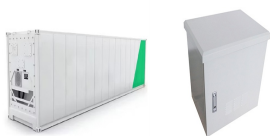
That's basically a 66x39 solar panel. But what is the wattage? That is unfortunately not listed at all. 72-cell solar panel size. The dimensions of 72-cell solar panels are as follows: 77 inches long, and 39 inches wide. That's a 77x39 solar panel; basically, a longer panel, mostly used for commercial solar systems. 96-cell solar panel size.



Step 2: Calculate the Wattage of the Solar Panel Array. The size, or Wattage, of your solar panel array depends not only on your energy needs but also on the amount of sunlight that's available in your location, ???



A solar panel wattage calculator can help optimize your solar power system for maximum efficiency and cost-effectiveness. This calculator considers variables such as panel efficiency, sunlight intensity, and environmental conditions, ???



The only difference between a solar panel's efficiency and its rated wattage is that a high efficient solar panel will take less space to produce the same amount of power than a low efficient solar panel. For example, a 300 watt solar panel with 15% efficiency will produce the same amount of power that a 20% efficient 300 watt solar panel will



First, ascertain the solar panel wattage you will need???most range from 250W to 400W???then check your annual power consumption and calculate how many watt panels you will need (depending on your selected solar panel power output). How Do I Calculate How Many Solar Panels I Need for My House?

PHOTOVOLTAIC PANEL LAMP WATTAGE CALCULATION



How to Calculate Solar Panel Wattage. This wattage refers to the overall power output that a PV panel can provide in a specific amount of time. It is determined by factors such as voltage, amperage, and number of cells. Typically, lower-wattage panels are more compact and portable, whereas the higher-wattage ones are often larger and less common.



This solar power calculator will, given the Watt rating of a solar panel, your solar panel location and your grid cost of electricity produce a table indicating the estimated solar powered energy you can expect to generate from an installed system in Winter and Summer, along with the calculated yearly average and equivalent costs of supplying the same electricity ???



Use our solar panel calculator to find your solar power needs and what panel size would meet them. Board. Biology Chemistry required panels = solar array size in kW x 1000 / panel output in watts. Typically, the output is 300 watts, but this may vary, so ???



How much power or energy does solar panel produce will depend on the number of peak sun hours your location receives, and the size of a solar panel. just to give you an idea, one 250-watt solar panel will produce about 1kWh of energy/electricity in one day with an irradiance of 5 peak sun hours. Here's a chart with different sizes of solar panel systems and ???