

# PHOTOVOLTAIC PANEL MOUNTING BRACKET SPACING



The Solar PV panels are then clamped to the rails, keeping the panels very close to the roof to minimize wind loading. ?63+VAT/panel. Metal Standing Seam roofs. Though unusual, this type of roof occasionally appears on homes and businesses. We attach clamps to the standing seam of the roof, then either a rail is attached to the clamps or the



Solar Panel Rails and Brackets are essential for secure installations. Our range includes solar panel clips, mounting brackets for solar panels, and solar rails . From end clamps to mid clamps, we offer various solar panel clip options.



With a full range of roof hooks and brackets, PV-ezRack SolarRoof??? is suitable for most roofing types, including pitched tile roofs, metal roofs, concrete roofs and even slate roofs. High Quality Strict quality control in accordance with ISO ???



These slate solar fixing kits have been calculated for 650mm rafter spacing. If your roof is different then please advise. nuts plus suitable solar panel clamps. Please select the module mid and end clamp sizes to match your solar modules. Solar modules in a portrait orientation onto a plain tile tile roof. PV Slate fixing | Brackets (solar



Deciding to install a solar system is only the first step. Solar panel installation constitutes a substantial project with significant financial implications, entailing numerous subsequent decisions.. This article explores the solar panel mounting brackets for solar installation and the key factors to consider. Amidst the vast options, understanding the ???

# PHOTOVOLTAIC PANEL MOUNTING BRACKET SPACING



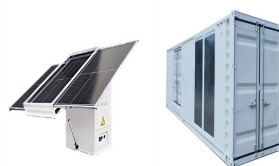
Advanced considerations in solar panel spacing and adherence to best practices in installation are critical for maximizing the efficiency and lifespan of solar arrays. By taking into account complex environmental ???



Selecting the right solar panel racking and mounting system is crucial for maximizing energy production, ensuring system stability, and prolonging the lifespan of your solar panel system. Whether you choose a roof-mounted or ground-mounted solution, carefully consider factors such as roof type, environmental conditions, and regulatory compliance to make an informed decision.



The ideal pitch for a Solar Panel is around 30 degrees off the horizontal. Simply because this allows the panels to gain more exposure from the sun throughout the entire day. When installing Solar panels on a flat roof, this is easily achieved. As the Solar Panels are installed onto a bracket which tilts the panel to around 30 degrees.



Solar Installers remove tiles temporarily and fix brackets to the roof. The rails then fix to the brackets. Solar roof bracket fixed to roof. Solar roof bracket and rail. Panels being fastened to rails on-roof. If you have a solar panel system ???

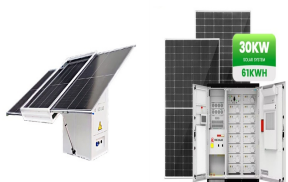


solar panels to the roof of a building. Examples of individual components are : ??? Roof brackets/hooks ??? Rails/profiles ??? Joiners ??? Clamps ??? Clips ??? Rafter bolts (sometimes referred to as "hanger" bolts) Complete system ???all components necessary to mount a ???

# PHOTOVOLTAIC PANEL MOUNTING BRACKET SPACING



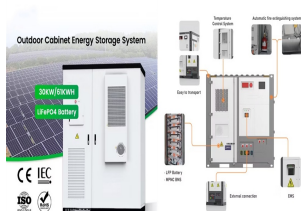
2. Materials Used in Solar Panel Mounting Hardware. The durability and resilience of solar panel mounts depend heavily on the materials used in their construction. This section explores the standard materials and their properties that make them suitable for solar panel mounting applications. Aluminum: Durable and Lightweight



In conditions where there is no significant snow load or high wind speed, L-feet spacing of 5 ft or closer can be necessary. The harsher the conditions, the more L-feet connections and roof penetrations are required.



How many mounting brackets does a solar panel need? Typically each solar panel requires between 1 and 2 mounting brackets. For example, a set of 15 panels might require between 20 and 30 mounting brackets. Where are solar panel rails sold? You will find racking systems at many home-improvement stores. Do flexible solar panels need an air gap? No.



Solar panel orientation and shading. Make sure to use the proper type of clamps and screws to secure the panels to the mounting brackets. Connect electrical components. Once the panels are secured to the roof, the electrical components need to be connected. This includes wiring the panels together, connecting them to a power inverter, and



Plain tile fixing kits for slate on roof solar panel sizes 2 to 16 panels can be used with all sized pv modules. As the amount of brackets could alter depending on the spacing. Data Data. Fixing arrangement example plain-tile layout, for ???

# PHOTOVOLTAIC PANEL MOUNTING

## BRACKET SPACING



Solar Panel Installation on Tiled Roofs: Best Practices for Mounting Roof Rails, Hooks, Connecting Panels To Rails and Safety They are sturdy metal brackets screwed into the joists underneath the tiles and sit between two tiles where rows of tiles overlap. You can see a diagram of a roof hook above. Some roof hooks come with extra



K2 solar panel rails 3.65m Lengths. New ultra light solar panel roof rails enable less-waste reducing cutting time. These ideal solar panel rail lengths will hold up to 3 full size landscape oriented solar panels sided by side. If a larger span is required it is possible to use our K2 rail joiners to extend the lengths very easily.. Alternatively if you only require rails for one or two ???



When designing a PV system that is tilted or ground mounted, determining the appropriate spacing between each row can be troublesome or a downright migraine in the making. However, it is essential to do it right the first time to ???



Good write up, Does this equation for determining row width hold good for single axis tracked panel rows which run north south. The panels in each row tilt maximum +55/-55 towards the sun at sunrise and sunset. Applying this height ???



Keep lowering until the mounting rail holes and brackets are in alignment. The solar panel has to be flattened completely. Secure the flattened solar panel with the wing nuts and knob bolts. Method 2: Install Solar Panel RV Corner Bracket Mounts. The following is a general guide for solar panel corner bracket mount installation.

# PHOTOVOLTAIC PANEL MOUNTING

## BRACKET SPACING



Solar PV panels can be retrofitted onto an existing roof, on top of the tiles or other roofing materials, using roof anchors (also called roof-hooks or brackets), mounting rails and clamps. Mounting rails are usually made of aluminium (due to its lightness) and other components from aluminium or stainless steel. The mounting rails are fixed



Disclaimer: To ensure your system is compliant to all Australian standards please ensure you use feet spacing values taken from Radiant Engineering documents. If you require these ???



All solar panel mounting systems will have a limit of building height ??? typically 10 m, but sometimes 20 m. For example, Australian company SunLock supplies a "one size fits most" set of drawings in its installation manual, but can provide extra certification for any building height, panel size or purlin/batten material or thickness



Number of panels in each row (\*) Spacing between feet (mm) (\*) Number of rows of this number of panels (\*) Width of panel being used (mm) (\*) Add More. Parts Required. Rail (mm) 0: Splice: 0: Disclaimer: To ensure your system is compliant to all Australian standards please ensure you use feet spacing values taken from Radiant Engineering



Flat Roof Solar PV Array Spacing / Shade Calculator. The minimum required space between parallel rows to avoid shading is decided by the height of the array immediately in front, the ???

# PHOTOVOLTAIC PANEL MOUNTING

## BRACKET SPACING



The company also offers comprehensive support and guidelines to help installers make informed decisions regarding rail spacing and panel configuration. Proper spacing between solar panel rails is essential for ensuring the stability, efficiency, and longevity of solar installations. Factors such as panel type, mounting system design



Most of us are familiar with what solar panels look like, but they are only one piece of this renewable energy puzzle. A key component of any solar panel system is its solar panel racking, even if you can't see it easily after installation. A proper solar energy system will need everything from batteries to store additional energy to solar panel mounts for attaching ???



(c) Panels with a gap of between 50mm and 300mm between the underside of the panel and the roof(s) (no pitched frames). (d) Panels with a minimum distance between panel and roof edge of  $2s$  where  $s$  is the gap between the underside of the panel and the roof surface, as shown in Figure D8 (roof edge includes ridges with pitch  $\geq 10^\circ$ ).



Types of Solar Panels Brackets. There are different types available, including railless brackets, and top-of-pole mounts, the specific type of bracket or clamp chosen depends on factors such as the dimensions of the solar panel, installation method, and desired mounting angle for optimal exposure to sunlight.



Solar panel systems are mounted to your roof using "feet," bolted through the flashing into a rafter for security. solar installers need access to your attic or roof underside to check rafter integrity and spacing. This ensures the mounts can support your solar panel system properly. Choosing the Right Solar Panel Brackets; Secure

# PHOTOVOLTAIC PANEL MOUNTING BRACKET SPACING

---



When installing a solar panel system, you'll need to determine the best spacing for your brackets, which depends on a combination of factors, including the type and size of your panels, local ???



2. Attach the Fixing Bracket to the Solar Panel. Once you've gathered all the tools and followed up on permits and safety requirements, it's time to set up your mounting system. The first step is to attach the fixing ???