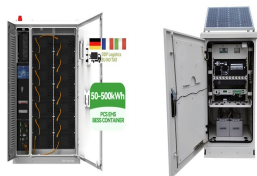


PHOTOVOLTAIC PANEL ROOF FOUNDATION CONSTRUCTION PLAN



Installing solar panels can be a significant investment, so having a properly designed solar panel stand is crucial to protect that investment and optimize solar production. With the right solar panel stand design, you can ???



Solar photovoltaic. Photovoltaic modules installed on a sloping roof or facade occupy an area of approximately 8 m²/kWp.. Photovoltaic modules installed on the ground or on a flat surface occupy an area of approximately 20 m²/kWp, avoiding shading between the rows of modules.. The design of a photovoltaic system, from the public operator's network to the photovoltaic ???



PV panels, solar heat pipes, and micro wind turbines are examples of onsite renewable energy production. Because of their easiness of deployment and independence from the microclimate (Chemisana and Lamnatou, 2014, Hui and Chan, 2011), PV panels have been widely used in building design as a green feature (Awad and G?l, 2018, Lau et al., 2017, Ouria ???



Step 4: Construction and Installation Site Preparation: The site was cleared of vegetation, graded, and leveled. Infrastructure improvements, including access roads and security fencing, were implemented. Solar Panel Installation: Mounting structures were assembled, and solar panels were installed with proper alignment and spacing. Electrical

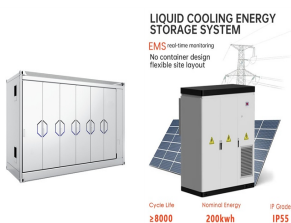


buildings, flat roof residential structures, or buildings without attic access, or using alternatives to the mounted aluminum framed PV panels (i.e., other PV technologies or ground mount systems), EPA recommends that an installer certified by the North American Board of ???

PHOTOVOLTAIC PANEL ROOF FOUNDATION CONSTRUCTION PLAN



This document discusses the design of a reinforced concrete foundation for a ground-mounted solar panel system using engineering software. A spread footing foundation with a 36-inch diameter concrete pier is selected to support the panel mounting pole. The software is used to model and analyze the foundation, including defining loads, soil properties, and reinforcement ???



PDF | On Feb 8, 2016, Alan J. Lutenegeger published Foundation Alternatives for Ground Mount Solar Panel Installations | Find, read and cite all the research you need on ResearchGate



Provide architectural drawing of solar PV system components. (RERHPV Guide 3.5) Alternative: Provide home buyer with the following information: List of renewable-ready features Available free roof area within +/- 45° of true south; ???



Receive a custom permit design for a solar panel system prepared by an experienced technician. This personalized solar design helps you to make an informed, unbiased decision to find the best system at the lowest ???



TYPES OF SOLAR PANELS Roof mounted PV Solar Panels are typically supported . The design and construction of solar ready buildings will add additional costs to the structural, mechanical Solar Panel Design Decision and General Information Sheet, ???

PHOTOVOLTAIC PANEL ROOF FOUNDATION CONSTRUCTION PLAN



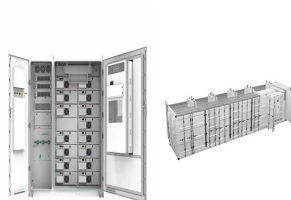
of a solar PV plant. 2. Identify the different types of solar PV structures. 3. Know the unique aspects of solar PV structures and why a Manual of Practice is needed. 4. Learn about some key challenges that the solar PV industry faces including corrosion of steel piles, bolt tensioning, and frost jacking of pile foundations. Learning Objectives



Solar panel mounting systems play a key role in ensuring that photovoltaic (PV) installations operate at their best. A bore test and tests to understand the soil conditions are essential to understanding the best type of foundation to use. You need to assess: you can begin to design the PV plant with the most appropriate structure.



In order to provide a solid foundation for the mounting system, make sure the support rails are tightly bolted together. Roof construction and rear ventilation: China's reduction in photovoltaic export tax rebates may lead to an increase in module prices, with current solar panel prices in Europe below 6 cents per watt. France plans



Standards. General information on roofing and good roofing practice is given in the BRE publication Roofs and roofing[7]. Technical Bulletins produced by the National Federation of Roofing Contractors are also a recognised source of good industry practice. A full list of the relevant standards applicable to roofing is provided in Table 1. Table 1



RCC Roof Mounts design and RCC Roof Mounts construction stand as pillars in this domain, ensuring that solar panels are not just installed, but are strategically positioned for optimal performance. As we delve into the intricacies of designing and constructing RCC Roof Mounts, we aim to shed light on best practices that can elevate your installations and position ???

PHOTOVOLTAIC PANEL ROOF FOUNDATION CONSTRUCTION PLAN



Sika(R) SolarMount-1 (SSM1) - an aerodynamic, non-penetrating and lightweight mounting system specially designed for the installation of rigid photovoltaic (PV) panels to flat rooftops, covered with Sika roofing membrane. The key ???



One of the key aspects addressed in a solar structural engineer report is the analysis of the solar infrastructure, which encompasses the solar panels, supporting structures, and connections to the electrical grid. These reports ensure that the projects adhere to local building codes and safety regulations, while also considering environmental factors, such as ???



3. Roof Layout and Design. Space Utilization: Strategies for maximizing solar panel placement on various flat roof layouts while considering necessary clearances and maintenance access. Obstacle Management: ???



Current adopted versions vary by state but range from the 2003 to 2018 editions with most states adopting the 2012 or 2015 versions. Both the 2015 and 2018 editions of the IBC and IRC have specific sections dedicated to the design and construction of roofs with PV panels. For example, the 2015 IRC states the following in chapters 3 and 9:

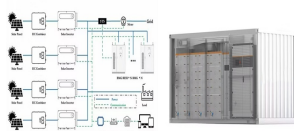


With this efficiency rate, a typical Indian household with a solar panel system of 3 kW to 5 kW capacity can produce around 4,000 kilowatt-hours (kWh) to 6,000 kWh of electricity per year. The cost of a solar panel system ???

PHOTOVOLTAIC PANEL ROOF FOUNDATION CONSTRUCTION PLAN



Solar Photovoltaic (PV) Design Guidelines ??? Version 1 August 2022
K??inga Ora ??? Homes and Communities 8 Array Mounting Solar Ready
Design Solar Installation Design The suitability of the roof for PV mounting
systems has been investigated and the estimated weight allowed for.15
The findings have been documented.



The solar PV panels are mounted on U-purlins which are in turn supported
on existing building roof purlins. Roof top solar panel installation adds
some dead load due to weight of panels and mounting systems. Once the
size of the solar panel is fixed, the existing structure must be evaluated for
added solar panel loads.



Rules for Solar Panel House Design. by Mr. Solar; July 7, 2023 March 8,
2024; If you are in the construction or planning phase for your house in the
Philippines, some details can be provided in the project to facilitate the
installation of solar panels. Follow this quick guide to get your house ready
for solar panels. Photovoltaic panels



In the UK, solar photovoltaic (PV) is a popular renewable energy and its
deployment is rising rapidly across the globe. With recent fluctuations in
energy markets and carbon reductions initiatives coming to the fore, the
number of flat roof installations will continue to rise as local authorities and
businesses look to reduce their carbon footprint and gain energy security
for ???



General good roofing practice should always be followed when installing
renewable energy systems on roofs. The PV, solar thermal or microwind
turbine system should be fully defined at the design stage, including
coordination of the assembly sequence of all system components. ???

PHOTOVOLTAIC PANEL ROOF FOUNDATION CONSTRUCTION PLAN



Maximizing the Benefits of Solar Panel Roof Mounts. When it comes to maximizing the benefits of solar panel roof mounts, there are several strategies to consider. By optimizing panel placement and orientation, incorporating energy storage systems, and taking advantage of incentives and rebates, you can make the most of your solar power investment.



Solar Panel Specifications: The size, weight, and configuration of the solar panels must be compatible with the mounting system to ensure a secure installation. The design of solar roof mounting systems is a critical phase ???



Prototyping Roof Mounts for Photovoltaic (PV) Panels: Design, Construction and CFD Validation Mohammad AL-Rawi 1,* , Nived Rajan 2, Sreeshob Sindhu Anand 3, Tony Pauly 4, Nikhil Thomas 5



Optimized Orientation and Positioning of Panels: It's common to install solar panels on the roof of a house. Still, chances are, your house wasn't built with optimizing the angle and orientation of solar panels in mind. Your ???