

# PHOTOVOLTAIC PANEL SHOWS OFFLINE

---



How do I know if my solar system is offline? The first thing to do when you notice your Solar System showing ???Offline??? is to check your inverter itself. During the day, you should be able to see a solid Green LED next to the display. The display should also show a read out of what power is currently being generated.



Why is my solar system showing ???offline???? In most cases, this is a simple internet connection issue not the inverter on the way out. The first thing to do when you notice your Solar System showing ???Offline??? is to check your inverter itself. During the day, you should be able to see a solid Green LED next to the display.



Why is my Fronius inverter showing as ???offline??? in solarweb? What to do now. Often People will ring our office and express their concern as to why they???re Fronius inverter is showing as ???Offline??? in SolarWeb. In most cases, this is a simple internet connection issue not the inverter on the way out. The first thing to do when you notice your Solar System showing ???Offline??? is to check your inverter itself.



What are the most common faults on a solar PV system? Grid-Tied Solar Edge Solar PV Systems Off-Grid Solar Edge Solar PV Systems We will look to address all of these systems, where possible. Please note: The most common fault on a Solar PV System is the Inverter Failing internally on a hot sunny day. Every type of Solar PV system that you will come across works on the same main principals:



Why is my PV system not working? These two conditions which may require troubleshooting are: Zero output is a common problem and in nine out of ten cases, it is due to a faulty inverter or charge controller. It???s also possible that one solar panel in your pv array failed. As the pv modules are connected in series, one failing pv module will shut down the entire system.

# PHOTOVOLTAIC PANEL SHOWS OFFLINE



What happens if a solar panel fails? It's also possible that one solar panel in your pv array failed. As the pv modules are connected in series, one failing pv module will shut down the entire system. If your solar system is not delivering sufficient power for which it is rated for, the resulting situation is called a low power situation.



If you believe that your Solar PV is working, but it is on reduced power or it is producing less power than it used to. There could be a fault with the panels, you should check for shading of the panels or the panels being dirty. If ???



Panel shows Server as Offline while its still running #2153. Closed MisterCookie1234 opened this issue Jul 6, 2020 ? 1 comment Whenever i start my MC Server, it goes to Online in the Panel, but after a while the panel sets it to "offline" making it impossible to work with the server from the console - even tho the Server still stays online.



Discussion of solar photovoltaic systems, modules, the solar energy business, solar power production, utility-scale, commercial rooftop, residential, off-grid systems and more. Solar photovoltaic technology is one of the great developments of the modern age. Improvements to design and cost reductions continue to take place.

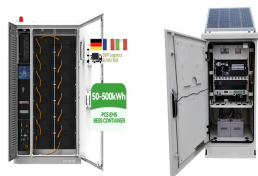


In a study of 255 PV powered homes in the U.S, 54 had issues with their PV system. Most homeowners had no idea their PV system had a fault. Your electricity bill should tell you if your system's producing expected generation. A large, unexplained increase in electricity costs could indicate a reduction in solar power.



Get expert advice on the top solar panel problems owners face and how to solve them. Solar panel inverter problems, dirty solar panels, pigeon problems under solar panels, generation meter and electrical problems with solar PV, and much more

# PHOTOVOLTAIC PANEL SHOWS OFFLINE



inverter is showing as "Offline" in SolarWeb. In most cases, this is a simple internet connection issue??? not the inverter on the way out. The first thing to do when you notice your Solar ???



The solar photovoltaic generation system for solar panel monitors the voltage, current and power with data logger and record the values of voltage, current and power in .csv format. The new technique applied in this paper uses QR codes for storing the video recording to capture the real time variations in values and graphs for voltage, current and power.



Solar Panel System Equipment. You must REGISTER before you can post. Offline Panels in my array? (Solar Edge SE7600A-US inverter) 01-10-2018, 03:10 PM. which I would assume means it has a connection to all 36 panels. Now, it shows P\_OK: 033/036



This article describes how you can troubleshoot a solar system in basic steps. Common issues are zero power and low voltage output.. Troubleshooting a solar (pv) system. Below I will describe basic steps in troubleshooting a PV array. Quality solar panels are built and guaranteed to produce power for 25 years. For that reason, it's most likely that a problem is ???

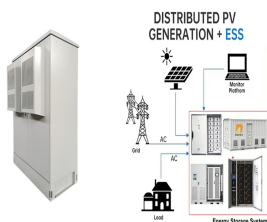


Solar inverter problems often include issues like the inverter not turning on, irregularity in power output, or fault codes displaying. Solutions typically involve checking power connections, inspecting for possible damages in the solar panel array, resetting the inverter, or contacting professional service.

# PHOTOVOLTAIC PANEL SHOWS OFFLINE



An explanation and discussion of the PV system are achieved with the study of different types of MPPT algorithms of PV systems. **KEYWORDS:** MPPT Algorithms, Solar Power, Renewable Energy, Hybrid



An offline voltage-based MPPT technique which is capable of tracking MPP has been selected because of numerous advantages it offers such as simple and low cost of implementation. a pilot PV panel of same rating to that of main PV panel is used in the paper to calculate  $V_{oc}$  and the results shows that the MPP is tracked under changing



??? The SEDA (2019) states that a family may instal a solar panel . of 1 kWh, costing RM6000 to instal if it consumes 300 kWh of . Table 5 shows that 21% of participants use less than 500 kw of .



Fig. 13 shows the solar panel distributed crack formation, which is identified through UV-F imaging. Download: Download high-res image (367KB) Namely, it cannot be performed during PV module operation (due to PV module removal and offline testing setup), making it unpopular in outdoor measurement.



Let's explore some of the most common solar panel problems you may encounter: Loss of Power Generation. One of the primary concerns for solar panel owners is a decrease in power generation. If you notice a significant drop in the amount of electricity your panels are producing, it could be due to several factors.



On top of that, even at 3 am, it shows "export" of 2-7 kW. From monitoring that, it feels like it is recording input as export, as the numbers (with some delay) seem to rise and fall noticeably as my 240v appliances cycle.

# PHOTOVOLTAIC PANEL SHOWS OFFLINE



Offline MPPT method works by disconnecting the PV panel from the system in order to measure either the short circuit current or open circuit voltage (also referred as offline parameters). Figure 2 shows the block diagram of FSCC. ???



SolarEdge Designer is a free solar design tool that helps PV professionals like yourself lower PV design costs and close more deals. Learn more. For Home; For Business For Business Automatic population of the rooftop using an irradiance map and shading analysis optimum placement of the solar panels, so you can deliver the best possible



Get expert advice on the top solar panel problems owners face and how to solve them. Solar panel inverter problems, dirty solar panels, pigeon problems under solar panels, generation meter and electrical problems with ???



To know if your Ring solar panel is working, simply check the Device Health settings and check if it's connected. If your app doesn't show the solar panel as "connected" in your device's health settings, there are a few steps you can take to fix it. First, make sure the solar panel is connected correctly.



AN OFFLINE TRAINED ARTIFICIAL NEURAL NETWORK of a photovoltaic panel under different cell temperature and solar irradiance conditions. For training the proposed artificial Figure 1 shows a



If you've noticed that your inverter is not sending data to the FoxESS cloud or that your inverter appears offline on the app but is working fine follow these steps. IF YOUR INVERTER HAS NEVER REPORTED CORRECTLY ENSURE THE FIRMWARE IS UP TO ???

# PHOTOVOLTAIC PANEL SHOWS OFFLINE



Rebooted everything, still shows me offline. Live off grid, app is critical to me. Anyone have any ideas? Reactions: BenCos18. K. Kyle\_E New Member. Joined Mar 4, 2020 Messages 27. Jan 30, 2023 #2 Well through no actions of mine it started working again. I didn't change anything. Other than the basic troubleshooting steps of rebooting and



AN OFFLINE TRAINED ARTIFICIAL NEURAL NETWORK Figure 1 shows a photovoltaic cell equivalent The photovoltaic panel single diode model is used to create the training data for the proposed



Solar panel Automatic Pet Feeder Light Bulb Cameras Support FAQ Download Why the camera shows "offline" on Wansview app after upgraded the firmware for it, but I can watch it via IP address on web browser?



Kevin Schafer is an authoritative voice in the solar industry (featured on ABC), emphasising the significance of correct solar installations and the crucial choice of a professional solar retailer.



EufyCam Keeps going offline when plugged into the solar panel . Hi everyone, I am facing some trouble with the EufyCam Pro 2. I noticed that the camera keeps going offline. I would take it down and plug it into an outlet for it turn back on and as soon as I put it back to plug it into the solar panel, it goes offline within a couple of days..



7. Ring Solar Panel Not Showing in App. If your Ring solar panel is not showing up in the app, there are a few issues that could cause this. It's possible that your panel isn't properly connected to the Ring device or that the batteries haven't been placed in the camera. It's also possible that

# PHOTOVOLTAIC PANEL SHOWS OFFLINE

---

your solar panel hasn't received the



# PHOTOVOLTAIC PANEL SHOWS OFFLINE

---



The type of small solar power panel 0.36W 2V . Figure 5 shows a PV string with three . arranging the I-V and P-V characteristics of the PV array by offline . reconfiguration.



If your Arlo device is plugged in to an electrical outlet or solar panel charger, make sure that the connections are secure and that the outlet or solar panel is receiving power. If you tried all the above options, and the Arlo Secure App still shows that your device is offline, remove your device from the Arlo Secure app, factory reset the



The solar photovoltaic generation system for solar panel monitors the voltage, current and power with data logger and record the values of voltage, current and power in .csv format. The new technique applied in this paper ???