

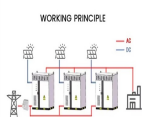
PHOTOVOLTAIC PANEL SIZE SPECIFICATIONS AND WEIGHT DIAGRAM



Solar panel dimensions and weight. 60-cell panels are generally around 65 inches x 39 inches. In comparison, 72-cell panels are a bit larger, at about 80 inches by 40 inches. The easiest way for homeowners to figure out the best solar panel size for their needs is to work with a dedicated solar installer. Solar installers will size your



The exact size of residential and commercial solar panels depends on the manufacturer and their specifications. (Click to sort ascending) Residential Panels. Commercial Panels. Number of Solar Cells: 60-70: 72a??96: a?|



As we can see, those 60-cell, 72-cell, and 96-cell solar panel dimensions are a bit theoretical. These are the practical solar panel dimensions by wattage from solar panels that are actually sold on the market (made by SunPower, Panasonic, QCells, REC Solar, Renogy, Bluetti, and so on).. Note: You can allow for up to a 5% difference in both length and width due to different solar a?|



There are three types of solar energy systems and two types of panels, the PV panel, the solar thermal panel, and concentrated solar power or CSP collectors. PV uses the sun's light to create electricity, which can be used a?|



46. Solar Panel Life Span Calculation. The lifespan of a solar panel can be calculated based on the degradation rate: $L_s = 1 / D$. Where: L_s = Lifespan of the solar panel (years) D = Degradation rate per year; If your solar panel has a a?|

PHOTOVOLTAIC PANEL SIZE SPECIFICATIONS AND WEIGHT DIAGRAM



It ensures that any excess current is redirected safely to the ground. When wiring your solar panel system, make sure to follow the National Electrical Code (NEC) regulations and consult a qualified electrician to ensure proper grounding. Grounding requirements may vary depending on the size and location of your solar panel system. 4.



A ground mounted solar panel system is a system of solar panels that are mounted on the ground rather than on the roof. A photovoltaic (PV) module is a packaged, and connected photovoltaic solar cells assembled in an array of various sizes. Photovoltaic Unit Weight = 135 pcf . Version: Mar-15-2019 Contents



Based on FMB's best solar panels, the average solar panel dimensions in the UK are: Solar panel size: 1,945.5mm (length) x 1,130.1mm (width) x 31.25mm (height) Weight: 23.6kg While there isn't much variation in width (six of our eight best panels measured 1,134mm) and height (all but one was 30mm tall), there were significantly different lengths.



When contemplating the addition of solar panels to your roof, the dimensions and effectiveness of these panels are crucial aspects to keep in mind.. Solar panels come in the standard 1.70m x 1.0m dimensions with an output ranging between 250 a?? 440 watts.. While output varies, in most cases the size of the single solar panel will not change.



On the other hand, if you're connecting 42 x EcoFlow 400W rigid solar panels to 3 x DELTA Pro Ultra Inverters + Home Backup batteries, the diagram will be considerably more complicated.. For solar panel arrays with more than a few panels, you're going to need to take the particulars of your installation area into account to optimize performance.

PHOTOVOLTAIC PANEL SIZE SPECIFICATIONS AND WEIGHT DIAGRAM



Source: Mission Solar Energy Usually, residential rooftop solar panels are approximately 65 inches tall, 40 inches wide, and 2 inches thick. In feet, that would be 5.4 ft. by 3.3 ft.. Commercial solar modules are usually slightly larger in length and width only.. However, with greater technological innovations in recent years, there is no longer a clear cut distinction a?|



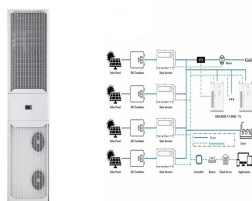
The most common solar panel sizes for residential installations are between 250W and 400W, while larger commercial installations may use panels up to 500W or more. How heavy are solar panels? There are considerable weight differences depending on the exact brand and model of solar panel you buy, but on average they range from 16kg to 24kg.



The variation in output will usually not change the size of a single solar panel. The standard size of a 250W solar panel is approximately 1.7m x 1.0m, with slight variations depending on the manufacturer. The reason for this is that there are a number of factors that decide the solar panel's physical dimensions.



Learn how solar panel size impacts efficiency and performance. Discover key factors to consider for choosing the optimal size for your solar power solutions. Table: Common Solar Panel Sizes and Specifications. Panel Type Dimensions (cm) Area (m2) Power Output (W) Standard Panel: 165 x 99: 1.63: 300: Roof Strength: Make sure the roof



Junction Box Type PV PV-LH0805 LH0806 LH0801 LH0808 PV-LH0808-1 -LH0808 PV- LH0808-1 LH0701 JB002 Length of Cables / Connector Type No cable 900 mm MC4 Output tolerance +/-3% Frame Aluminium Product warranty 5 years Warranty on electrical performance 10 years 90% + 25 years 80% of power output Smallest packaging unit 1 panel

PHOTOVOLTAIC PANEL SIZE SPECIFICATIONS AND WEIGHT DIAGRAM



What Is a Solar Panel Wiring Diagram? A solar panel wiring diagram (also known as a solar panel schematic) is a technical sketch detailing what equipment you need for a solar system as well as how everything should a?|



For example, a regular 60-cell solar panel weighs about 18kg (40 pounds), while a 72-cell solar panel weighs about 23.5kg (52 pounds). 72-cell panels are taller and harder to handle, making installing them on a roof tough. Furthermore, because of their larger size, 72-cell panels can be more affected by strong winds during installation.



For builders that desire to meet the elements of these specifications but are constructing multifamily buildings, flat roof residential structures, or buildings without attic access, or using alternatives to the mounted aluminum framed PV panels (i.e., other PV technologies or ground mount systems), EPA



To select the right solar panel size, it is important to know the standard solar panel sizes available on the market. Every solar panel consists of solar cells, which are typically 6-by-6 inches.



When talking about solar technology, most people think about one type of solar panel which is crystalline silicon (c-Si) technology. While this is the most popular technology, there is another great option with a promising a?|

PHOTOVOLTAIC PANEL SIZE SPECIFICATIONS AND WEIGHT DIAGRAM



Module weight (approx) (kg [lbs]) 24 [52.91] Number of cells & size 72 cells & 156mm/156.75 (4BB/5BB) Frame 600W/mm material Anodized aluminium T6-6063 alloy Glass 3.2mm ARC Junction box IP67 1 rated, IEC 200W/m1000V + UL 1000V Cable connector MC4/MC4 compatible (4mm²) Packaging details Number of modules per pallet 27 Number of pallets per 40ft



Even after 25 years of operation, PV panels still have an efficiency of over 80%. 5. Range of Power Output: 315 to 335 Watts-Peak. 6. Tolerance for Power: 0 to +5 Watts-Peak. Also Read: Monocrystalline Solar Panel Vs Polycrystalline. What is Polycrystalline Solar Panel Size? Poly-Si/multi-Si cells are typically 6 inches (15.24 centimeters) in



Solar panel efficiency represents the percentage of sunlight that a solar panel can convert into electricity. It is a crucial factor in determining how effectively a panel utilizes sunlight. For example, if a 600-watt solar panel has a rating of 18%, it can convert 18% of the sunlight it receives into electricity. Voltage



Picture this a?? after determining the solar system size you need and ordering enough panels to support your electricity consumption, you find that you don't have enough space on your roof to support them. Uh-oh. As sleek a??



Standard panel dimension 1200mm x 600mm x 7.1mm, but available in any bespoke shape and size up to 3m. Polysolar Mono PERC modules offer high efficiencies up to 22.1% combined with ultra light weight and flexibility. Light Weight a?? 5.7kg (3kg/m²),2.5mm thick. Lightweight Glass PV Panels. PS-MC-GL.

PHOTOVOLTAIC PANEL SIZE SPECIFICATIONS AND WEIGHT DIAGRAM



This leaves the output of the panel the same but reduces the electrical resistance in each of the cells leading to an efficiency gain for the solar cell. This is now a common technology deployed in most newer solar panel a?|



A 4kW solar panel system costs around GBP9,500 to buy and install. If you want to include a battery in the installation, this will add around GBP2,000 to the price, for an overall cost of GBP11,500.



In the solar panel size chart below, we've broken down the standard solar PV panel sizes by their average cost range. Keep in mind that these are the sizes and prices of a single solar panel, not a solar panel a?|



Two half-frames and many more PV modules. Since 2022, our GSE IN-ROOF SYSTEM frames come in two parts, making it possible to fit larger and wider modules! Use our tools to find the reference number of the frame corresponding to your panels. Find out more. New frames for XXL modules! "Frames for modules up to 600Wp Module length: 1990 to