

PHOTOVOLTAIC PANELS 3300 SQUARE METERS POWER



What is Solar Panel Watts per Square Meter? Solar panel watts per square meter (W/m) measures the power output of a solar panel based on its size. Compare solar panels to see which generates most electricity per square meter. A ???



In this formula, the Pmax stands for the maximum solar panel power; the Area equals the width times the length of solar panels; 1000 is the conversion factor that transforms power output per unit area from watts per square meter to percent. For instance, assuming a solar panel has a surface area of 1.6 square meters and the highest power



Types of solar panels. The type of solar panels you get can affect electricity output, since some solar panel types are more efficient than others.. A solar panel's efficiency indicates how well it converts sunlight into electricity. The higher the efficiency rating, the more electricity it will produce per square metre. Here's what you can expect from different solar ???



How much energy does a solar panel produce? As mentioned above, the two main factors that determine solar panel energy output are panel power and sunshine. In the UK, a typical solar panel has a power rating of 350W (watts), and a typical day would have four hours of sunlight. The easiest way to estimate output in kWh is to multiply those



The race to produce the most efficient solar panel heats up. Until mid-2024, SunPower, now known as Maxeon, was still in the top spot with the new Maxeon 7 series. Maxeon (Sunpower) led the solar industry for over a decade until lesser-known manufacturer Aiko Solar launched the advanced Neostar Series panels in 2023 with an impressive 23.6% module ???

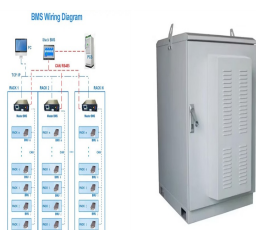
PHOTOVOLTAIC PANELS 3300 SQUARE METERS POWER



Solar energy meters help to account for these ups and downs in day-to-day electricity production and usage. With the solar meter, excess electricity is fed into the electric utility's grid when it produces more than needed.



The size of a solar panel is measured in watts, which indicates the amount of power it can generate. The most common solar panel sizes for residential installations are between 250W and 400W, while larger commercial installations may ???



To calculate the KWp (kilowatt-peak) of a solar panel system, you need to determine the total solar panel area and the solar panel yield, expressed as a percentage. Here are the steps involved in this calculation: 1. Find the total solar panel area (A) in square meters by multiplying the number of panels with the area of each panel. 2.



On average, solar panels designed for domestic use produce 250-400 watts, enough to power a household appliance like a refrigerator for an hour. To work out how much electricity a solar panel can



Fortunately, we've got you covered with our solar panel output calculator. This tool will instantly provide you with the amount of electricity that your chosen panels will produce in your region, and the roof space that they'll ???

PHOTOVOLTAIC PANELS 3300 SQUARE METERS POWER



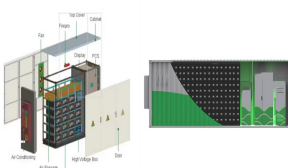
How much power do solar panels produce per square meter? To answer this, there's a number of factors to consider. Table ??? Compare solar panel power production for cities in US and UK. Location Average Daily kWh output for 1m² of a 540wp panel; London: 0.49: Edinburgh: 0.43: New York: 0.69: LA: 0.86: Austin, TX:



Solar panel output per month. Based on the above-mentioned formula, you can easily get the daily data. So to get the monthly power output, you simply calculate the daily figure then multiply it by 30: Daily figure x 30; Solar panel output per ???



A 4kW solar panel system is suitable for the average home in the UK and costs around ?5,000 ??? ?6,000.; The estimated average yearly savings you can expect with a solar panel system range from ?440 to ?1,005.; If you install a 4kW ???



Solar panel size refers to the total amount of power a solar panel can generate over a period of time; Solar panel dimensions refers to the physical size of a solar panel; Solar panel sizes and wattage range from 250W to 450W, taking up 1.6 to 2 square metres per panel.



Solar panel size per kilowatt and wattage calculations depend on PV panel efficiency, shading, and orientation. a 6.6 kW solar system typically consists of 20 panels each delivering 330W of power. Solar Panel Wattage. It's often seen that larger homes might require more solar power. For example, a 1,500-square-foot house can need

PHOTOVOLTAIC PANELS 3300 SQUARE METERS POWER



Solar panel's maximum power rating. That's the wattage; we have 100W, 200W, 300W usually on my meter for 2 panels in series behind glass I'm making .4-.8 of a W & I have another set the same way inside I'm in Boston you get the ???



How much power or energy does solar panel produce will depend on the number of peak sun hours your location receives, and the size of a solar panel. just to give you an idea, one 250-watt solar panel will produce about 1kWh of energy/electricity in one day with an irradiance of 5 peak sun hours. Here's a chart with different sizes of solar panel systems and ???



38 Of 400 Watt Solar Panels: 3200 Square Feet Roof: 41.400 kW Solar System: 414 Of 100 Watt Solar Panels: 138 Of 300 Watt Solar Panels: 103 Of 400 Watt Solar Panels: 3300 Square Feet Roof: 42.694 kW Solar System: 426 Of 100 ???

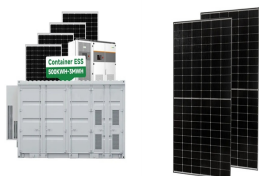


With the bright light conditions and the efficiency as measured, calculate the size of solar panel required to power: A radio of average power demand approximately 0.1 Watt. For the bright light the power was 59.09 watts and the efficiency was ???



Factors Affecting Solar Panel Output. Wattage Output: The output capacity of the panels. Panel Orientation: South is optimal, but anything from east to west through south is good. Roof Pitch: An angle of 32 degrees is ideal but again, there is some give here. Shading: Shade will significantly effect output. Look at micro-inverters if you have some shade.

PHOTOVOLTAIC PANELS 3300 SQUARE METERS POWER



How much energy does a solar panel create per square meter? The average solar panel has an input rate of roughly 1000 Watts per square meter, while the majority of solar panels on the market have an input rate of around 15-20 percent. As a result, if your solar panel is 1 square meter in size, it will likely only produce 150-200W in bright



How many square meters of solar panels do you need? Try our solar panel cost calculator if you want to work out what size of solar system you need to save money whilst being grid-tied. We've also written in more detail ???



For example, an optimal solar panel has a power of 300 Wp. If your installation consists of 6 solar panels you have a total power of 1800 Wp. Restrictions on the number of solar panels on a house Square meters available. 3300 kWh 6 4000??? - 5000??? 5000 kWh 9



In fact, a 800 watt solar panel can provide enough power for an entire RV or boat. they typically produce around 3-4 amps. So an 800 watt panel would produce around 3300-4000 watts of power. photovoltaic (PV) solar panel, in full sunlight PV cells can produce around 240 watts per square meter. So a 1kW panel would have an area of just



These clever meters tell you exactly how much power you're using via your In-Home Display, so you'll never have to make an educated guess. They also make sure the amount shown on your bills is always accurate. If you've got a 1 kW solar panel system on your roof, then it could power your cup of tea with about 10 minutes of sunlight.

PHOTOVOLTAIC PANELS 3300 SQUARE METERS POWER



Solar panel brackets. Solar panel inverter. Solar panel brackets.
Installation i.e. labour costs of the installer. Cost of the solar battery storage system (although this is optional). Short answer: the average UK cost of a new ???



So with a north/south roof, that gives you 850 square feet. 400-watt solar panels that are 20 square feet in size: This is the most frequently quoted panel power output on EnergySage. 1.3 production ratio: This is the U.S. median production ratio, which is the estimated energy output of a solar panel system relative to its actual size in watts (W).



Now you can just read the solar panel daily kWh production off this chart. Here are some examples of individual solar panels: A 300-watt solar panel will produce anywhere from 0.90 to 1.35 kWh per day (at 4-6 peak sun hours locations).; A 400-watt solar panel will produce anywhere from 1.20 to 1.80 kWh per day (at 4-6 peak sun hours locations).; The biggest 700 ???



Solar Energy Per Square Meter. Solar energy per square meter, or "watts per square meter" (W/m²), is a measure of the amount of solar energy that is received per unit area on a surface. It is used to determine the amount of solar energy that can be generated by a solar panel or array, and is often used as a metric for comparing the performance of different solar ???



As we can see, those 60-cell, 72-cell, and 96-cell solar panel dimensions are a bit theoretical. These are the practical solar panel dimensions by wattage from solar panels that are actually sold on the market (made by SunPower, Panasonic, QCells, REC Solar, Renogy, Bluetti, and so on).. Note: You can allow for up to a 5% difference in both length and width due to different solar ???

PHOTOVOLTAIC PANELS 3300 SQUARE METERS POWER



The more solar cells contained on a solar panel, the more power that panel can generate. Typically solar cell sizes have been 156mm x 156mm, however, they have been increasing over the last 3-4 years which has been leading to larger dimension solar panels. Residential solar panel sizes



Monocrystalline solar panels. They comprise monocrystalline silicon cells, which offer high efficiency and a neat aesthetic (black-colored cells). Their dimensions vary depending on the power, but they are generally found in rectangular formats (160 x ???