

# PHOTOVOLTAIC PANELS AND SQUARE TUBE REINFORCEMENT ACCESSORIES



Kalypso(R) is a support system for PV modules which are fixed on pre-painted steel sandwich panels using the innovative and patented Ondafix(R) fixing rail. High performance sandwich panels with a 60 um paint coating, Hairexcel(R), are available in a wide variety of colours to match roof design. Quick and easy to install, Kalypso(R) is

114KWh ESS



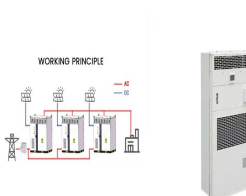
Use the square-shaped Photovoltaic glass blocks (11x11x6 cm dimensions) from Seves Horizontal series as the energy-efficient and low-cost alternative to electrical ground lighting. These eco-friendly blocks are ideal for brightening ???



solarstore.ie is Ireland's Leading Distributor of Solar PV Photovoltaic Products. solarstore.ie and our partners have been successfully supplying PV Photovoltaic solutions to the Irish market for 10 years, selling thousands of PV systems for both the Domestic and Industrial Sectors.

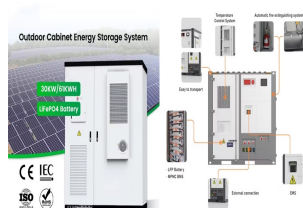


All solar panel strings connected in parallel have to feature the same voltage, and they also have to comply with the NEC 690.7, NEC 690.8(A)(1), and NEC 690.8(A)(2). Modules need to be the same model in all cases in order to ???



Solar panel mounts must withstand various weather conditions. This section addresses extreme weather challenges and offers solutions for maintaining and protecting solar mounts in such environments. 6. Innovations in Mounting Technology. The solar industry is on the way to evolving, with new technologies emerging in solar panel mounting systems

# PHOTOVOLTAIC PANELS AND SQUARE TUBE REINFORCEMENT ACCESSORIES



Torque tube is a critical structural component, especially for single-axis solar trackers. Torque tubes are typically circular, square, pentagonal, octagonal, or D in shape and coated with ???



KD Solar stainless steel self-bonding adjustable end-clamp with push-clip. The clamp can be used on panels with thicknesses ranging from 30 ??? 40mm. The end-clamp is mounted on the panels situated to the edge of the PV array. The ???



A ground mounted solar panel system is a system of solar panels that are mounted on the ground rather than on the roof of buildings. Photovoltaic solar panels absorb sunlight as a source of energy to generate electricity. A photovoltaic (PV) module is a packaged, and connected photovoltaic solar cells assembled in an array of various sizes.

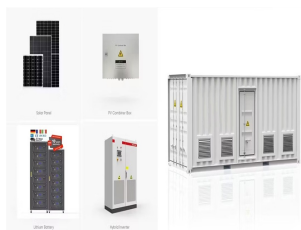


Shop installation accessories for solar panel installation from PV Connection. Free delivery for all orders over \$500 Australia wide. Enquire now! FREE SHIPPING! On Orders Over \$500. Call Us Siegel Roof & Gutter Silicone Tube ??? Black. Product Code: PV-GP360/B. Login to see pricing. In Stock. Same Day Dispatch. View product. New.



PVC end caps are ideal for square profiles, adding a finished look to a solar panel's tubular mounting rails. These square tubing end caps are flexible and easy to fit. Enclosure boxes: Controller, DC-to-AC inverter, combiner box, fuse box and utility meter

# PHOTOVOLTAIC PANELS AND SQUARE TUBE REINFORCEMENT ACCESSORIES



They are also relatively inexpensive compared to active systems like photovoltaic panels or concentrated solar power plants. However, there are some limitations to consider when using these types of systems as they require direct sunlight exposure throughout most daylight hours for optimal performance and may not be suitable for areas with limited sunshine hours during ???



The area of a residential 60 cell solar panel is 17.62 square feet, and the area of a commercial 72 cell solar panel is 21.13 square feet. In most cases, residential roofs are designed to



More Energy from Every Panel. With the ability to generate both electricity and heat, hybrid solar panels produce more energy per square foot compared to traditional PV panels. This makes them highly effective in areas with limited space. A monitoring system can track both electricity and heat output, ensuring you get the most from your PVT system.

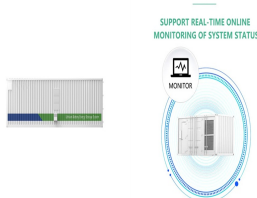


**REINFORCEMENT & SLAB ACCESSORIES.** SCS heavy-duty concrete square bars are manufactured in 1 metre lengths from 20mm up to 100mm. Fixing costs are greatly reduced as the bars can simply be laid on the ???



A fully worked example of Ground-mounted Solar Panel Wind Load and Snow Pressure Calculation using ASCE 7-16. With the recent trends in the use of renewable energies to curb the effects of climate change, one of the fast growing industries as a solution to this problem is the use of solar energy.

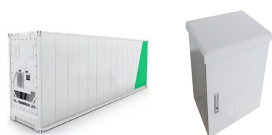
# PHOTOVOLTAIC PANELS AND SQUARE TUBE REINFORCEMENT ACCESSORIES



The price of solar panels depends, among others, on the square metres and system type. Check out the average prices of PV in the UK and the estimated installation costs & savings. 0330 818 7480. Become a Partner A typical 4kW solar panel system for 2-3 bedroom houses costs £5,000 - £6,000 with installation. Added together, the total cost



Concrete Reinforcement Reinforcement Accessories. Couplers. For the mechanical connection of deformed steel reinforcing bar. Dowels. Dowel bars & end caps, debonding sleeves & compound. Tying Wire. Tying wire, loop ties, dispensers & tools. Sheer Stud Rails.



Solar PV generation is higher in the summer than the winter due to longer days and the sun being higher in the sky. Figure 4 shows the typical monthly values of solar PV generation for a 2.35kW solar PV system in London which faced 60 degrees from south. From year to year there is variation in the generation for any particular month.



Solar panels and their required mounting equipment typically weigh around 3 to 4 pounds per square foot. This weight is usually acceptable for any roof type in good shape; however, solar panels using weighted ballasts on flat roofs typically weigh a bit more since concrete blocks hold the system in place.



CABLOWIND (R) is the brand new product which further enriches the range of accessories proposed by Sun Ballast and which combines two distinct functions in a single element: Channel, which allows the correct accommodation of the cables, and additional ballast, to ensure further stability for the wind of the photovoltaic system.

# PHOTOVOLTAIC PANELS AND SQUARE TUBE REINFORCEMENT ACCESSORIES



In a solar tracking system, the torque tube is a critical structural component, especially for single-axis solar trackers. Torque tubes are typically circular, square, pentagonal, octagonal, or D in shape and coated with galvanizing. ???



PV panels will re-radiate most of this energy as longwave sensible heat and convert a lesser amount (~20%) of this energy into usable electricity. PV panels also allow some light energy to pass



ASCE 7 Guidelines. The American Society of Civil Engineers (ASCE) provides guidelines for the structural design of solar panel installations through their publication, ASCE 7 1. These guidelines cover the essential factors that influence solar panel installations, such as wind loads, snow loads, and dead loads, to ensure the safe and efficient operation of these ???



Everything you need to buy solar panel mountings, fixings, brackets and rails are available from CEF. Perfect for roof, ground or wall mounted solar panels. We stock wood screws, M10 bolts and flange nuts, multi-rail mountings from big brands such as K2 and more.



Solar panels (SPs) can be various cross-sections (e.g., square, rectangle) and sizes but their main purpose is to convert the sun light in order to make electricity. Normally, solar power systems

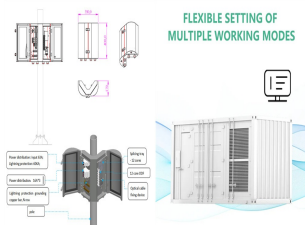
# PHOTOVOLTAIC PANELS AND SQUARE TUBE REINFORCEMENT ACCESSORIES



Solar PV System Installation Accessories International Directory. Buy Accessories Directly From Manufacturers At Factory Prices. Solar Panels Solar Inverters Mounting Systems Charge Controllers Installation Accessories. Battery Storage Systems Solar Cells Encapsulants Backsheets. Advertising . Company Directory Product Directory Newsletter



Example calculation: How many solar panels do I need for a 150m<sup>2</sup> house ?. The number of photovoltaic panels you need to supply a 1,500-square-foot home with electricity depends on several factors, including average electricity consumption, geographic location, the type of panels chosen, and the orientation and tilt of the panels. However, to get a rough ???



Solar photovoltaic bracket is a special bracket designed for placing, installing and fixing solar panels in solar photovoltaic power generation systems. The general materials are aluminum alloy, carbon steel and stainless steel. The related products of the solar support system are made of carbon steel and stainless steel. The surface of the carbon steel is hot-dip galvanized and will ???