

PHOTOVOLTAIC PANELS INSTALLED OVER LARGE AREAS



Integrated solar panels are installed within the structure of your roof, rather than on top of its tiles like regular solar panels. Installing integrated solar panels for an average 3-bedroom home costs somewhere between \$5,000 ??? \$6,000. With such an installation, you can expect savings of up to \$660 per year on your electricity bill.; If you're looking to seamlessly blend form and



Here at CAT we installed a large PV roof array back in 1997. After about 16 years we tested all of the panels and they were still mostly at 90% or more of their original rating. As with any industrial product there is an environmental impact associated with photovoltaic panels. The main areas of potential concern are: The energy required to

Commercial and Industrial ESS

Air Cooling / Liquid Cooling

- Budget-Friendly Solution
- Renewable Energy Integration
- Modular Design for Flexible Expansion



Homes and businesses will be able to install rooftop solar panels more easily, under new rules announced today. Changes to permitted development rights rules will mean more homeowners and

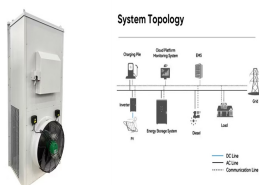


Photovoltaic (PV) solar energy generating capacity has grown by 41 per cent per year since 2009¹. Energy system projections that mitigate climate change and aid universal energy access show a



The solar panel installation must respect the area's character and appearance in its design, size and placement, so it can integrate well with its surroundings. Planning permission approval hinges on how well the proposed installation meets these requirements.

PHOTOVOLTAIC PANELS INSTALLED OVER LARGE AREAS



Electricity production from large-scale photovoltaic (PV) installations has increased exponentially in recent decades 1,2,3. This proliferation in renewable energy portfolios and PV powerplants



In floating PV, solar panels are placed on water bodies, such as calm equatorial seas or hydro reservoirs, 79, 80 enabling the reservoirs to act as virtual batteries. 81 Agrivoltaics, i.e., combining agriculture land and PV, can offer additional benefits. 82 In dry areas, soil humidity beneath the panel increases, reducing the need for irrigation. 83 In windy regions, vertical ???



Geo Green Power carries out solar panel installations at commercial and domestic properties across the UK. We aim for the process to be as smooth as possible from start to finish using our considerable experience of installing ???



Bhadla, the second largest solar farm in the world, has a capacity of 2.7GW. The site covers 14,000 acres, or 56 km²???equivalent to 3% of the entire surface area of London or just under the size of Manhattan (59.1 ???



A medium-sized household of up to 4 people typically needs a 4-5kW solar system (equal to 8 ??? 13 panels, each 350W or 450W). Solar panels will cost between ?2,500 ??? ?13,000 excluding installation but could offer annual savings of up to ?1,005.

PHOTOVOLTAIC PANELS INSTALLED OVER LARGE AREAS



Generally, concentrated solar power is not installed at a residential scale and instead will almost always be installed over a large area as a utility-scale generating facility. For residential and commercial property ???



India installed 18 GW of solar PV in 2022, almost 40% more than in 2021. A new target to increase PV capacity auctioned to 40 GW annually and dynamic development of the domestic supply chain are expected to result in further acceleration in PV growth in the near future. Brazil added almost 11 GW of solar PV capacity in 2022, doubling its 2021



Solar panel installation. What you need to know to work safely . HEALTH AND SAFETY . GS001 04/19 2 . should be protected by barriers or secure covers. For large areas, safety nets placed close under the roof should be used along with a means ???

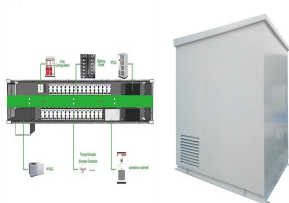


A typical 4kW solar panel system for 2-3 bedroom houses costs ?5,000 - ?6,000 with installation. Added together, the total cost of solar panels and a battery in the UK is ?13,000 - ?15,500. Added together, the total cost of solar panels and a battery in the UK is ?13,000 - ?15,500.



Solar panel costs are decreasing. According to the latest UK government data [1], the cost of solar panels in the UK is at its lowest level in almost 2 years fact, between March 2023 and 2024, the median cost per kilowatt (kW) for a 0 to 4kW solar panel system has dropped more than 20 per cent.. Combine that with the falling costs of solar battery storage, and the ???

PHOTOVOLTAIC PANELS INSTALLED OVER LARGE AREAS



Here's how a solar panel installation works from start to finish, and what you should do before and after the installation. After all this build-up, your installation will be over before you know it, with most jobs taking between one and three days. This is why most flat-roof solar arrays are installed on large commercial buildings with



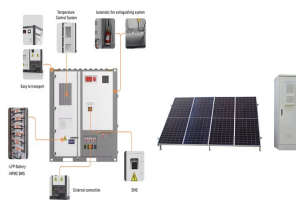
Solar panels are an increasingly popular way to generate renewable energy at home. They offer a clean and sustainable source of power and can save you money on your energy bills in the long run. However, solar ???



According to the International Energy Agency, there are some circumstances where solar photovoltaic (PV) is now the cheapest electricity source in history. 4 This is because the price of solar has fallen sharply ???



The last few years have witnessed a significant growth of the FPV worldwide. The first large-scale float PV project in Europe was deployed in 2017, on the Queen Elizabeth II reservoir in the UK (Figure 14). The FPV development consists of 23,046 PV panels, each installed on a float and grouped together to form a floating platform.



Floating solar, also known as floating photovoltaic (FPV) or floatovoltaics, is any solar array that floats on top of a body of water. Solar panels must be affixed to a buoyant structure that keeps them above the surface. If you come across a floating solar installation, it's most likely located in a lake or basin because the waters are generally calmer than the ocean.

PHOTOVOLTAIC PANELS INSTALLED OVER LARGE AREAS



Its interest-free option enables you to get this installed for ?241.04 per month over 24 months. Solar panel maintenance costs. There are three future solar panel maintenance costs you should consider: Inverter replacement; Maintenance and repair; Cleaning ; ???



However, solar PV installed capacity progress expanded 100-fold between 2005 and 2018. Consequently, solar PV has emerged as a key component in the low-carbon sustainable energy system required to provide access to affordable and dependable electricity, assisting in fulfilling the Paris climate agreement and in achieving the 2030 SDG targets .



There are a large number of formally approved solar panel installations in conservation areas, including on roofs that face the road. If there is any shade over the solar panels, this can have a large effect on the overall efficiency of the system. As a result, it is important to clear the installation area of any overhanging branches, and



Large-area solar PV installations help to reduce production costs. Solar PV panels will probably lose efficiency over time, whereby the operational life is 20???30 solar panel waste recycling is under the control of the Japanese environment ministry and solar panel manufacturers participate with local companies in research on recycling



Solar panel systems produce a fair amount of heat, from the panels themselves and connected equipment like inverters, cables, and solar batteries. This heat must be ventilated properly ??? or simply given the opportunity to disperse ??? so none of these parts overheat.

PHOTOVOLTAIC PANELS INSTALLED OVER LARGE AREAS



can provide over 90% of the necessary CO₂ emission reductions by 2050 15 Figure 3: Solar PV 17 would have the largest installed capacity expansion by 2050 global solar PV installations over the coming decades. 31 eFigur 15: PVn ira ol snwe(nanul amt esnvent i onl aRegiyt pai cca nad, emca) epenl t r IPCC Intergovernmental Panel on



3 ? Areas with higher PV power generation potential, characterized by ample solar radiation and clear sky, tend to experience low or medium-intensity events more frequently, ???