

PHOTOVOLTAIC PANELS INTEGRATED ROOF



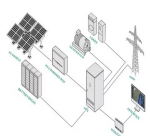
In addition to the price of the panels themselves, GSE mounting systems cost around ?100 per solar panel if the roof is at the felt and batten stage, and ?200 per panel if tiles need to be removed. A reputable installer will be able to ???



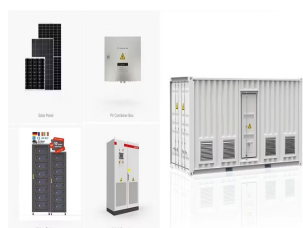
In Roof Solar Panels. Integrated Solar Panel Cost Implications. Installation costs vary, typically ranging from ?10,000 to ?20,000, with the final cost depending on the size, type and quality of the system installed. Cost of ???



Due to the unique design of Timberline Solar??? as a complete roofing system, efficiency cannot be calculated in the same way as a traditional solar panel. The ES is made out of the same high-efficiency mono PERC cell technology found in Tier 1 solar panels, and depending on a home's specific roof geometry, Timberline Solar??? may fit more kW per roof than traditional solar panels.

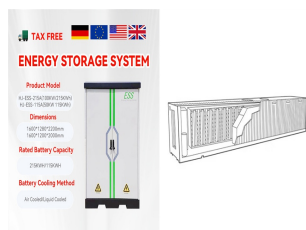


Unlike regular solar panels (also called "on-roof panels"), integrated panels need minimal mounting equipment, and the support that is there is hidden out of sight underneath the panels. In-roof panels are also designed to behave like roof tiles ??? they're weatherproof, waterproof, and can be as strong as normal roof tiles.



100% solar roof As building components, our integrated systems help you to create completely solar roofs. We help architects, builders and installers to realise their projects from design to installation : ?????we create a custom solar roof design ???

PHOTOVOLTAIC PANELS INTEGRATED ROOF



Roof-integrated solar panel installation is a simple process with Marley SolarTile(R) - just secure the fixings, place the first tile, push-fit additional tiles and then attach final fixings and flashings. The entire process can take less than one hour per kilowatt peak, and our integrated solar roof system is provided with all components in colour-coded boxes to make the process even easier.



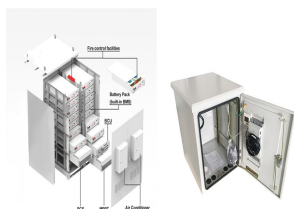
Solar panel efficiency is usually between 18% and 25%; Ergosun solar roof tiles can be hard to spot ??? credit: TBS Specialist Products Some models are actual roof tiles with integrated solar cells. Because traditional solar panels are quite bulky and need to be mounted directly on top of your existing roof, some people are put off by their



Solar tiles are integrated into the roofing structure during the initial construction or roof replacement process. The tiles replace the traditional roofing materials, making them an integral part of the roof itself. GB Sol is a well-known UK manufacturer specialising in solar panel roof tiles. They have developed their PV Slate, a solar



When you think of solar, rooftops or open fields with panels generating renewable electricity probably comes to mind. However, solar products have evolved ??? and now, many options are available under the umbrella of "building-integrated photovoltaics," or BIPV. BIPV products merge solar tech with the structural elements of buildings, leading to ???



We manufacture sleek, low-profile roof-integrated solar panels that replace the tiles or slates on your roof to make solar a genuine home improvement. Preserve the kerb appeal of your home while lowering your energy bills now and long into the future. Simple, durable, beautiful. Solar never looked so good.

PHOTOVOLTAIC PANELS INTEGRATED ROOF



Discover Solfit's innovative roof-integrated solar panels designed for both domestic and commercial applications. Our patented interlocking design ensures a watertight seal without the need for plastic trays or complicated flashing systems. With the knowledge of over 20 years solar PV installation experience on UK roofs, our patented



From an economical point of view, it is still hard for solar shingles to compete with conventional solar panel systems. However, in cases where changing your roof is necessary, solar shingles may present ???



Glass solar tiles and architectural-grade steel tiles, vent covers and ridge caps come together to form a roof that is both durable and powerful. Combine your Solar Roof with Powerwall???a home battery featuring an integrated solar inverter for increased ???

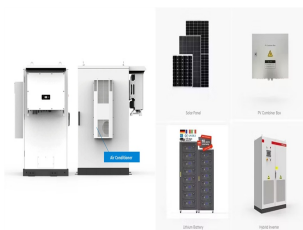


Integrated Solar Panels or In-roof Solar Panels are designed to sit flush with your roof. Unlike on-roof Solar Panels, which are installed on top of your roof tiles, integrated Solar Panels remove the roof tiles. we offer GSE In-Roof Mounting Systems at ?100 per Solar Panel if the roof is at the felt and batten stage and ?200 Per Solar



The majority of roof-integrated solar panels on the market are pre-framed and available in one orientation. The GB-Sol system uses a hidden rail system which is fitted to the roof battens, and this can be designed for any shape or size of solar panel. Standard-sized solar panels can be used in both portrait and landscape orientations, and we

PHOTOVOLTAIC PANELS INTEGRATED ROOF



In-roof solar panels, or roof-integrated photovoltaics (RIPV), are fundamentally the same as traditional solar panels, except they are intended to be part of a property's roof (as opposed to just sitting on top of it). The one key ???



Integrated solar panels, also known in roof solar panels, are photovoltaic solar panels embedded into the roof. In contrast, regular on roof solar panels are installed and attached with rails above the roof on top of your roof tiles.



Technical drawings showing installation of integrated solar PV and solar thermal panels in slate and tile roofs and solar thermal plumbing systems. Toggle navigation. About. About Viridian Solar PV16 - Solar PV Panels -Portrait - Integrated Pitched Roof: 000: 31.10.15: 10.011.c: Clearline Fusion - PV16 - Portrait - Integrated Pitched Roof



For an average 2-3 bedroom household, a 4kW integrated solar panel system costs between ?5,000 - ?6,000 and can save you up to ?660 a year, Based on your property size and the solar panel size, in-roof solar panels in ???



Easier to install than other conventional on roof and in roof systems. Panel to panel connection is less than 1 minute. Simple panel to panel connection guides the installer in to the correct position by simply pushing the panels together. No specialist equipment is required.

PHOTOVOLTAIC PANELS INTEGRATED ROOF



Solar PV roof panels are a great way to utilise flat roof space. Producing 310 watt-peak per panel and installed to ensure roof system integrity. An integrated solution for mounting photovoltaic renewable energy on a green roof or a blue roof. Discover more. BauderSOLAR F and F XL.



Integrated solar panel refers to the incorporation of solar panel technology into your spaces during the initial construction process, as opposed to adding it as an additional module afterwards. Instead of being placed on top of conventional roof tiles, integrated solar panels are fitted as a part of a roof alongside them.



With integrated panels, the roof tiles are removed and lightweight panels are installed in their place. Cheaper to instal on a new roof. As integrated technology becomes more common, the cost of installation has ???



The CIS Tower in Manchester, England was clad in PV panels at a cost of ?5.5 million. It started feeding electricity to the National Grid in November 2005. The headquarters of Apple Inc., in California. The roof is covered with solar panels. Building-integrated photovoltaics (BIPV) are photovoltaic materials that are used to replace conventional building materials in parts of the ???



Our award-winning integrated solar roof combines Nordic design with premium materials and highly efficient solar technology. Products Integrated Solar Roof The Perfect Solar Roof No one notices that my roof has integrated solar panels and there is always a moment of surprise. Why would anyone want to install ugly regular solar panels on

PHOTOVOLTAIC PANELS INTEGRATED ROOF



In roof PV panels have the advantage that they tend to be more aesthetically pleasing as they sit lower in the roof and look like an intended part of the roof rather than an add-on. The slight disadvantage is that the panels are harder to ???



Roof integrated solar panels are like traditional on roof panels, except they are installed in place of a section of tiles and act as the roof covering themselves. Many people prefer the aesthetics of in roof panels, as they're almost flush ???



Roof Integrated solar PV As solar power moves beyond government subsidy to become a home improvement option, its kerb-appeal is becoming more and more important. Integrated solar has come of age, and with Clearline Fusion the ???



metal and membrane roofing systems. Self-Cleaning. Global drinks giant SABMiller installed pioneering BIPVco Flextron solar-integrated roofing at one of its breweries in Nigeria. Triangle House, Sussex BIPVco is a pioneering UK manufacturer of building integrated photovoltaic roofing solutions for the commercial, industrial and