

# PHOTOVOLTAIC PREFABRICATED PANEL BASE



Another study [31] used cross-laminated timber (CLT) as the base structure to host PV modules. The CLT is a type of engineered wood fabricated by gluing layers of solid-sawn lumber, offering good insulation and soundproofing performance. Besides, PUBW is a fully prefabricated panel type that can be integrated with modular prefabrication



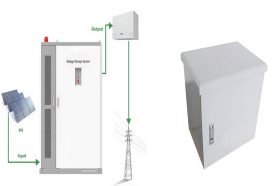
Solar Siding is a prefabricated, all-in-one system that integrates all the layers of the wall with a power generating exterior material. PV Integrated Wall Panel. Drainage . Heat. The perforated metal skin helps ventilate the cavity of the ???



A trusted leader in solar PV mounting systems. Designing, manufacturing and supplying. Since the incorporation of SUNFIXINGS in January 2011, we've strengthened our presence in the solar industry as a trusted leader in designing, manufacturing and supplying quality solar PV mounting systems. Through our continued flexibility and innovation



These clamps are attached to the joints of a solar panel and are held in place using stainless steel set screws. Using solar rooftop design software, you can easily design your solar mounting framework. 3. Strut Channel for Solar Panel Mounting: Strut channels, along with rails, clamps, and other fittings, are used to aid the cantilever arm in



If one solar panel is not enough to power your base during the day, one battery won't be enough during the night either. You need at least two batteries and 4 solar panels. Using prefabs with wires is a bit glitchy. I don't know the exact reason why but when you connect a solar panel and/or a battery to a prefab using a wire, it does not

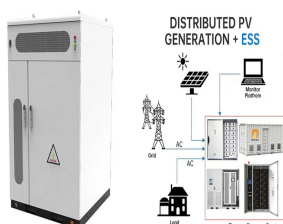
# PHOTOVOLTAIC PREFABRICATED PANEL BASE



Traditionally, solar panel and array installations require attaching mounts directly to a home's roof or the ground by drilling and cutting into it. Alternatively, solar ballasts secure the array to a building's roof or the ground without requiring holes to penetrate the surfaces. Ballasts also protect the solar arrays by preventing the



China leading provider of Solar Panel Mounting System and Solar Panel Mounting Brackets, Boyue Photovoltaic Technology Co., Ltd. is Solar Panel Mounting Brackets factory. the base fixation method of prefabricated cement piers can be used on the roof, and the brackets can be fixed using chemical anchor bolts after solidification. For sloping



To the installers of PV solar panels, less work on the civil component means more time to do the work where your expertise provides the greatest return. Contact Us. Download Product Information. FADDIS USA. Honeybrook, PA: ???



Solar panels perform best when exposed to direct sunlight. For that to happen, modules get mounted at an angle facing the south. This is where solar panel mounting structures come into play. Solar Mounting Structures are ???

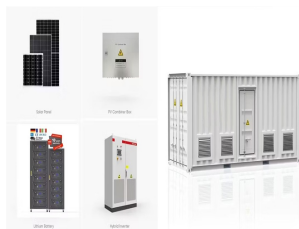


As the world's first integrated solar bike path, it was firstly 70 m long and 3.5 m wide, and constructed with several prefabricated modules [48]. Fig. 2 (b) illustrates the basic structure of the pavement module, which contains top photovoltaic panels with anti-slip glass coating and a bottom concrete baseplate. Later in 2016, the bike path

# PHOTOVOLTAIC PREFABRICATED PANEL BASE



Solar Panel Ballast Blocks Available in three standard sizes within days of ordering and a bespoke range to suit your individual project specification, our solar panel ballast blocks provide ground mounted solar panel systems for commercial solar farms. The above ground blocks do not breach the land. Which means agricultural land can quickly



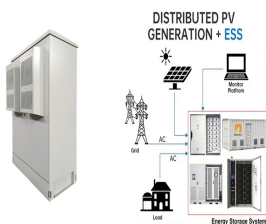
We reinvented the building envelope so that you can have it all. Our eFacades PRO are not just tested; they are pushed beyond the standard requirements to exceed building and PV code mandates.. Our products meet stringent building and fire safety certifications, including CAN/ULC 61730 and CAN/ULC 61215, ASTM standards, NFPA 285, EN 13501, S134, and more.



Choosing to use our precast concrete ballast blocks for your solar panel project can provide you with added flexibility. Ballast blocks can be used on flat commercial-style roofs, where it is not possible to penetrate the roof surface, and are simpler to install than penetrating systems. The blocks can be attached to the mounting to firmly hold

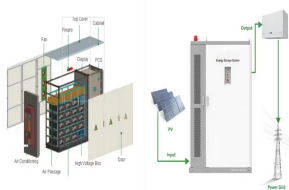


Introducing SY Panel Nepal Ltd., a leading panel manufacturing company in Nepal and a proud subsidiary of SY CO. LTD. based in South Korea, renowned as Asia's No. 1 Panel Manufacturer.. At SY Panel Nepal, we specialize in producing high-quality EPS and PUF sandwich panels, offering intelligent and innovative building solutions. Our panels are not only cost-effective but ???



Solar-ready pergola kit does not include solar panels, racks, or other solar related equipment. Post Length and Post Mounting Method, End Shape, and Post Base Trim. **CYBER MONDAY SALE! 25% OFF CODE: CYBERSALE.** Solar Pergola Kits The Big Kahuna but engineered to accommodate solar panel mounting. The Big Kahuna Solar Ready Pergola can be

# PHOTOVOLTAIC PREFABRICATED PANEL BASE



The modular prefabricated cabin is an outdoor intelligent energy storage shelter based on the core concept of "standard power distribution". It is composed of prefabricated cabins, secondary equipment screen cabinets (or racks), ???



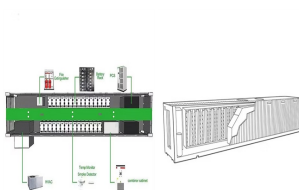
Tracker panels by: 2:50\$ 10:100\$ 20:1000\$ 60:5000\$ 120: 10000\$ Fixed panels: 1:50\$ 5:100\$ 10:1000\$ 30:5000\$ 60:7500\$ The Hangar: 240,000\$ The tank: 150\$ Electrical transformers: 100\$ The control building: 150\$ The flag: 150\$ Panel installation is made simple with different packs available, allowing you to choose between configurations of 2, 5



Solar Panel Ballast Blocks Available in three standard sizes within days of ordering and a bespoke range to suit your individual project specification, our solar panel ballast blocks ???



Jiangyin Titanergy Co., LTD. is a leading manufacturer of solar photovoltaic (PV) panel mounting systems, and solar photovoltaic panel frames and owns TITANERGY Solar Mounting System, a globally recog 2019-05-20. SNEC(Shanghai, China DETAILS 2019-05-20 Statement. Ground mounting system.



Solar ground screws are revolutionizing the way we think about solar panel installation. With their numerous benefits, including rapid installation, environmental friendliness, and cost-effectiveness, they're set to become a ???

# PHOTOVOLTAIC PREFABRICATED PANEL BASE



BACE Panel, the prefinished and prefabricated panel that is lightweight, high strength and with a fine surface finish. View More. Contact Us BACE SG PTE LTD. 164 Joo Chiat Road, Singapore 427438 +65 6344 2322 +65 6344 6100: admin@bacesg .sg: ???



Panelization design tool photovoltaic application on prefabricated panels for facades Rafiei, Sara; JENAB, YASAMAN 2020/2021 Abstract To support EU's 2050 decarbonization targets, an intense process to reduce cost, intervention times, and improve energy performance of deep renovation of existing European stock in the construction sector ???



The BoxPower SolarContainer is a pre-wired microgrid solution with integrated solar array, battery storage, intelligent inverters, and an optional backup generator. Microgrid system sizes range from 4 kW to 60 kW of PV per 20-foot shipping container, with the flexibility to link multiple SolarContainers together or connect auxiliary arrays.

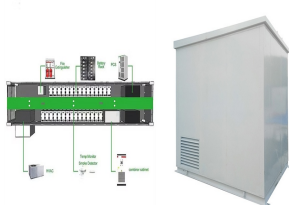


Our solar panel ballast blocks are designed to provide support to multiple panels. Available in all standard sizes, the blocks can also be built to your exact requirements. Designed with cast-in lifting points for ease of handling, these ???



In September 2023, First Solar Inc. opens new tab renewable energy company Longroad Energy has increased the company's solar panel orders by 2 gigawatts (GW), bringing Longroad's total purchases to approximately 8 GW. The advanced thin-film solar module order is expected to be delivered between 2027 and 2029, based on an existing 3.7 GW to the ???

# PHOTOVOLTAIC PREFABRICATED PANEL BASE



LafargeHolcim and Heliatek. In November 2017, LafargeHolcim and Heliatek presented a prototype for a new photovoltaic concrete facade system at French construction fair, Batimat. With two different yet complementary sets of knowledge, LafargeHolcim and Heliatek joined forces to create an architectural concrete panel facade system with the potential to double the power ???



View the complete article here. This guide is tailored for pile driving contractors and engineers involved in solar farm projects???providing an in-depth exploration of the techniques, materials, and challenges associated with pile driving in this growing sector. As the demand for renewable energy increases???solar farms are becoming an ideal market for pile ???



Mobile office 36m<sup>2</sup> from panel prefabricate. More information [HERE](#); The family-run house of the Lyra series with a surface of 250m<sup>2</sup> made of cement-brick bricks. More information [HERE](#); Ground-floor family house Axor series of Sendvix bricks in size 94m<sup>2</sup>. More information [HERE](#); Luxury prefabricated family house of 350m<sup>2</sup> series Largo made of