

PHOTOVOLTAIC SINGLE COLUMN BRACKET SEVERAL PANELS



How to choose a PV mounting system? The main considerations are day long access to unobstructed sunlight and wire lengths to batteries. Appearance and ease of access for any cleaning etc. should also be considered. PV mounting systems should not adversely affect the weather tightness of the structure to which they are fitted.



Can a solar panel be mounted on a vehicle roof? Brackets for mounting solar panels to a vehicle roof, or on a boat deck. The ABS solar panel mounting brackets can be used with any aluminium framed solar panel to provide a secure fixing for vehicles, caravans or boats without drilling any holes through the roof.



How do you attach a solar panel to a roof? Brackets are screwed or bolted to the solar module using suitable stainless steel self-tapping screws and then bonded to the roof surface using Sikaflex 521 UV adhesive. (Screws, bolts & adhesive not included) Solar panels may be mounted on a pole, a ground support, a wall of a building, a building or vehicle roof, or on a boat deck.



Where can a solar panel be mounted? (Screws, bolts & adhesive not included) Solar panels may be mounted on a pole, a ground support, a wall of a building, a building or vehicle roof, or on a boat deck. The main considerations are day long access to unobstructed sunlight and wire lengths to batteries. Appearance and ease of access for any cleaning etc. should also be considered.



Can a PV system be used on a flat roof? PV mounting systems for use on flat roofs avoiding penetrations to the roof. FixGrid Pro is a modular flat-roof ballasted mounting system suitable for both South facing and East-West orientation. The The FixGrid kit ballasted flat roof mounting combines simple and fast assembly with a capability of withstanding

PHOTOVOLTAIC SINGLE COLUMN BRACKET SEVERAL PANELS



Obviously, dual-axis tracker systems show the best results. In [2], solar resources were analysed for all types of tracking systems at 39 sites in the northern hemisphere covering a wide range of latitudes. Dual-axis tracker systems can increase electricity generation compared to single-axis tracker configuration with horizontal North-South axis and East-West tracking from ???



SOEASY aluminum solar bracket with professional and reasonable structural design. It has strong mechanical properties such as wind pressure resistance, snow pressure resistance, vibration resistance, corrosion resistance, etc., ???



Traditional rigid photovoltaic (PV) support structures exhibit several limitations during operational deployment. Therefore, flexible PV mounting systems have been developed. These flexible PV supports, characterized by their heightened sensitivity to wind loading, necessitate a thorough analysis of their static and dynamic responses. This study involves the ???



The gap between solar panel rows should be around five to six inches, but it is also recommended that you leave one to three feet of space between every second or third row. This is because maintenance workers need enough room to get on the roof and make repairs whenever necessary.



The products that Selfa usually manufacturers include 60- and 72-cell PV modules with customized solutions like single-column modules, facade modules, portable modules, coloured modules, and BIPV. Long story short, ???

PHOTOVOLTAIC SINGLE COLUMN BRACKET SEVERAL PANELS



The single-column bracket is supported by only one single row of columns, and each unit has only a single row of bracket foundations. It mainly consists of columns, inclined supports, guide rails (beams), component ???



3. Clamps: A fixing element placed at the end of each guide is used to hold a photovoltaic module correctly. We can also find them intermediate to fix two panels together. 4. Guide joints and fixings: Component used to join ???



A solar panel in fixed orientation between the dawn and sunset extremes will see a motion of 75° to either side, thus losing over 75% of the energy in the morning and evening. There are several common implementations of single-axis trackers. These include horizontal single-axis trackers (HSAT), horizontal single-axis tracker with tilted



When it comes to choosing a solar panel stand, it is important to know of its features and the factors that make a good solar panel stand; See also: Mounting Solar Panels: A Complete Beginner's Guide to Installation. Rust Proofing. Solar panel stands are mostly made from galvanized steel.



Brackets for Solar and Photovoltaic Panels on Various Types of Tiles. Over the years, we've developed brackets that fit practically all types of tiles: clay tiles, Portuguese tiles, Marseille tiles. These mounting brackets for solar panels on tiles ensure a solid and secure installation without damaging the tiles or the roof structure.

PHOTOVOLTAIC SINGLE COLUMN BRACKET SEVERAL PANELS



In conclusion, solar panel brackets are an essential component of a solar panel system. They provide a secure and reliable mounting solution for solar panels, while also helping to optimize the performance of the system. ???



Hot-Dip Galvanized Steel photovoltaic mounting system is typically applied on flat open field ground. Main components are high pre-assembled in our factory, which save lots of your on site installing time and cost.



(3) Water surface type bracket. With the continuous promotion of distributed photovoltaic power generation projects, making full use of the sea, lakes, rivers and other water surface resources to install distributed ???



A detailed analysis of the economic benefits of the Single Column Solar Mounting Bracket will be presented, highlighting: Reduced Installation Costs: The streamlined installation process and reduced need for heavy machinery or extensive groundwork cut down on labor and material costs. Lower Maintenance Expenses: The durable construction and simple design minimize the need ???



Solar PV Panels; Solar Inverters; Solar Battery Storage; Our Solar PV System Design Service; Portable Power Stations; Previous Next. Solar LED Lighting; FLCB1 - Single Floodlight Column Bracket Sale price ?39.50 + Quick add. ???

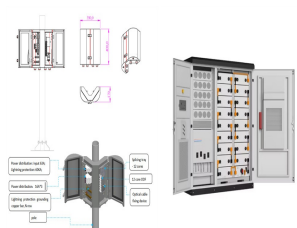
PHOTOVOLTAIC SINGLE COLUMN BRACKET SEVERAL PANELS



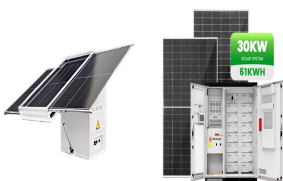
Types of Tiles Suitable for Solar Panel Integration. Choosing the right type of tiles is crucial. The integration of solar panels requires careful consideration of factors such as weight, durability, aesthetics, compatibility with mounting systems, and cost implications. Different Tile Materials Suitable for Solar Panel Integration. Clay Tiles:



The frame is typically made of metal and it is designed to support the weight of the panel. The mounting bracket is designed to attach the panel to the frame, and it is usually made of aluminum or steel. It is a sturdy and reliable structure that can be used to mount a single solar panel, as well as multiple panels in an array. It is



Boyue Photovoltaic Technology Co., Ltd is located in Hebei Province, China, the factory covers an area of 18,000 square meters, and 150 workers, 66 kilometers away from Beijing Airport and 180 kilometers away from Tianjin Xingang. Our company focuses on the detailed design, sales, production, installation and construction of seismic support brackets and accessories for ???



Dragons Breath Solar is proud to be one of the renewable industries leading photovoltaic mountings and associated variations. We can deliver multiple options for fixing solar panels on the roof or ground using the K2 system, including PV panel brackets, solar mounting brackets and solar panel roof mounts. See this presentation of what we can offer.

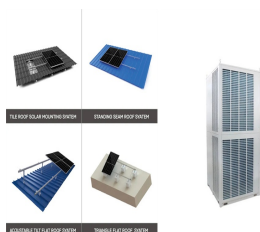


The end brackets will have a spot to hold a single panel, and the middle brackets will have a spot to secure two panels. Some solar panel kits may use single panel brackets. The basic is to position the bracket to capture the panel and then tighten the bolt that clamps the bracket to the panel. You may need only a single socket wrench with the

PHOTOVOLTAIC SINGLE COLUMN BRACKET SEVERAL PANELS



ASCE 7 Guidelines. The American Society of Civil Engineers (ASCE) provides guidelines for the structural design of solar panel installations through their publication, ASCE 7-1. These guidelines cover the essential factors that influence solar panel installations, such as wind loads, snow loads, and dead loads, to ensure the safe and efficient operation of these ???



The structural system is composed of columns (1), beams (2), purlins (3) and braces (4). The column is the seat for the beam. The beam and the purlin are pinned joint. A beam can be connected to one column or two columns. Fig. 1 shows the parts of the most commonly used rack configurations, 2 V and 3 V configurations.



Chuanda???'s main business includes various PV mounting and tracking system, distributed power station development, pipe corridor brackets etc. It is one of the largest professional manufacturers of PV mounting and tracking system in China and the Asia-Pacific region.



BRACKETS FOR SECURING PHOTOVOLTAIC PANELS, WITHOUT DRILLING. Sun-Age specializes in mounting solar panels on roof without drilling, as we were the first company in the world to patent non-drilling anchoring systems using special new-generation adhesives.. To date, thousands of installations have been completed with full satisfaction from both installers and ???



photovoltaic (PV) solar power plant projects, PV solar panel (SP) support structure is one of the main elements and limited numerical studies exist on PVSP ground mounting steel frames to be a

PHOTOVOLTAIC SINGLE COLUMN BRACKET SEVERAL PANELS



A dedicated range of mounting systems for photovoltaic panels is born from fischer's expertise in the fastening world. Solar panels represent a sustainable solution for generating electric or thermal energy, with many environmental ???



Here is a piece on Solar Panel Fixing Options built to help Developers, Contractors, Architects, and Homeowners grasp what's on offer for fixing PV panels. There are several options, but the kit where the ground-mounted frame is mechanically fixed to strips of concrete poured into the ground, has to be one of the preferred options



The Single-column carbon steel ground PV system features a sleek, single-post design made from durable carbon steel, providing robust support for solar panels while offering minimal wind resistance and easy installation in various ground conditions. providing robust support for solar panels while offering minimal wind resistance and easy



The following are some major components included in a solar panel mounting kit: 1. Solar Panel Mounting Brackets. Photovoltaic brackets are critical to solar panel mounting systems. These brackets account for almost 10% to 20% of the solar system cost. The brackets are typically designed to install and fix solar panels. They consist of columns