

PHOTOVOLTAIC STRAIGHT PANEL BASE



How do I choose the right structure for photovoltaic panels? When it comes to choosing the right structure for photovoltaic panels, several factors must be carefully considered. Geographic location are critical aspects to take into account. There are different types of structures to adapt to various surfaces, such as metal roofs, tile roofs, elevated or ground installations, and even wall-mounted structures.



What are solar photovoltaic (PV) mounting solutions? Solar photovoltaic (PV) mounting solutions are fundamental elements of any solar energy system, offering robust and reliable platforms for the positioning and orientation of solar panels. They facilitate optimal energy generation by aligning the panels towards the sun to capture maximum sunlight.



What are photovoltaic structures? Photovoltaic structures represent the supports for photovoltaic panels. These photovoltaic panels can be with an aluminum frame with a thickness of between 30 mm and 45 mm, or photovoltaic panels with double glass without frames. Below are our structure systems available for ground-mounted power plants:



What are solar panel frames? Solar panel frames are systems specifically designed to hold photovoltaic modules in place and provide the optimal tilt to capture the maximum amount of solar energy.



Do solar mounting structures support solar panels? These practices ensure that the solar mounting structures not only support the panels but also contribute to the overall efficiency and return on investment (ROI) of the solar energy system. Peering into the future, we explored trends and innovations shaping solar mounting structures solar panel mounting is continuously evolving.

PHOTOVOLTAIC STRAIGHT PANEL BASE



How do I choose the right solar mounting structure? Choosing the right solar mounting structure, as crucial as picking the panels themselves, must align with your unique needs, conditions, and goals. Factors like location, space, climate, and regulations are key. The correct choice optimizes efficiency, durability, and solar investment returns.



Solar panels should ideally face south in the UK, though arrays that face east or west can also be extremely productive. North-facing solar panels aren't usually worth installing. On the other hand, panels that point towards the ???



If 6 PV panels are erected on an independent supporting structure and the weight of each PV panel is around 26kg. The weight of the system supported by the structure will be 156kg (i.e. 26kg x 6 PV panels). ventilation ducts and radio base stations; More details for Minor Works item 1.50; More details for Minor Works item 3.50; Top. Quick



Offer the panel up to the bottom edge bar at around 45 degrees and lower it down until it engages and locks in place. Make sure the cables at the top of the panel do not foul on any battens and the panel sits flat. The bottom edge of the solar panel should be flush with the bottom edge bar.



Find Solar Panel Straight View stock images in HD and millions of other royalty-free stock photos, 3D objects, illustrations and vectors in the Shutterstock collection. Thousands of new, high-quality pictures added every day.



To understand solar panel costs better, look at the table below. It shows solar PV system prices for different locations in 2013. This highlights how manufacturing costs affect what users pay. Scale Australia (INR/W) China (INR/W) ???

PHOTOVOLTAIC STRAIGHT PANEL BASE



Photovoltaic (PV) panels, also known as solar panels, are a technology that converts sunlight into electricity. This process is achieved through the use of semiconductors, which are materials that can conduct electricity when exposed to light. PV panels are made up of many individual solar cells, each of which contains two layers of semiconductor material. [???



As shown in Fig. 3 (c), one was called "solar panel" (solar cell embedded in rubber and Plexiglas). At the same time, the other was entitled as "solar pavement" (solar cell embedded between two porous rubber layers). The Platío in Hungarian designed an environmental-friendly walkable photovoltaic tile with a base made of recycled



Ground mounted solar panels are 20%-25% more efficient than rooftop solar panels, as they can be positioned in the ideal direction and angle to maximise energy production and they have a lower degradation rate.; The cost of an average 4kW-5kW ground-mounted solar system for a 3-bedroom house in the UK ranges from ?8,500 - ?10,200. However, you can ???



Meter-main combos have a main breaker directly connected into the meter base. This set-up has no accessible line side conductors. This is the preferred method of interconnection for solar installers as it is the most straight forward and requires the least amount of calculations. Power flows from the main distribution box to the



Solar panel frames are systems specifically designed to hold photovoltaic modules in place and provide the optimal tilt to capture the maximum amount of solar energy. Their importance lies in the fact that they guarantee not only the correct fastening of the panels, but also their proper orientation to make the most of the available solar radiation .

PHOTOVOLTAIC STRAIGHT PANEL BASE



Commonly, these devices are referred to simply as "solar panels" because the light source in many applications is the sun. Yet the term "solar panel" can also refer to other devices that capture the sun's heat but do not produce ???



Solar photovoltaic (PV) panels are an increasingly popular choice for renewable energy generation. These panels convert sunlight into electricity, providing a clean and sustainable source of power. But what exactly is the standard size of a solar PV panel? The standard size of a solar PV panel can vary depending on the manufacturer and the [???



Solar panel mounting rails and racks are structural elements designed to secure solar panels in place. They ensure proper alignment, maximize exposure to sunlight, and provide stability against environmental factors like wind and snow. providing a sturdy base for the solar panels. Installing Rails: then use straight bolts to fasten the



We have the following solar connection products in our range for our growing customer base. These include: Straight Connectors (often referred to as MC4) ??? Pairs and singles for cable sizes from 2.5mm? to 10mm? This is the main connector used by Solar panel companies and by installers of all sizes of Solar installations. Often referred



Photovoltaic Straight Connectors. The elmex PV (Photovoltaic) Solar Straight Connectors, with NEC interlock, have been designed for applications in PV power generation systems, featuring a male plug and female socket design and are constructed from a UV resistant flame retardant thermoplastic. These solar panel connectors incorporate a

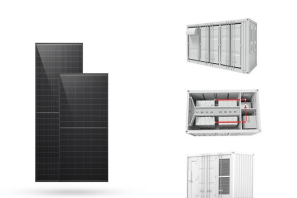


A ground mounted solar panel system is a system of solar panels that are mounted on the ground rather than on the roof of buildings. Photovoltaic solar panels absorb sunlight as a source of energy to generate electricity. A photovoltaic (PV) module is a packaged, and connected photovoltaic

PHOTOVOLTAIC STRAIGHT PANEL BASE

solar cells assembled in an array of various sizes.

PHOTOVOLTAIC STRAIGHT PANEL BASE



These hardwearing PV straight connectors are certified for PV solar cables 2.5, 4.0, 6.0 mm² diameter. The cables used should be TUV certified as per standard 2Pfg 1169/EN 50618 to ensure a proper connection. When the connectors are ???



An example of a thin-film solar panel is shown in Figure 3. Figure 3: Flexible thin-film panel. An evolution of the tandem technology has been patented by Unisolar, (CdS, P-semiconductor) deposited on a copper and carbon or titanium-based layer, which acts as a base and closed on top by tin oxide and glass,



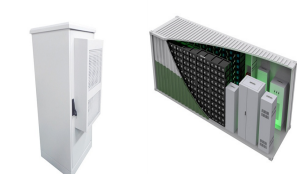
watt-peak per panel and installed to ensure roof system integrity. 01473 257671 Email Contact us Members Area. Open menu. Flat Roof Solutions. New Build solutions; Refurbishment solutions; Our two PV solutions are ???



Commerce reveals antidumping tariff rates on Southeast Asian solar panels Solar Power World unveils winners of 2024 Top Products competition Imperial Star Solar signs cell supply agreement with Suniva D. E. Shaw completes 50-MW solar tracker project in southeast Louisiana.



Ensure that the solar panel is securely mounted in its final location, as per the guidelines in the previous sections. Electrical Connections: Run wiring from the solar panel to the inverter (for grid-tied) or to the charge controller (for off-grid). Ensure all wiring complies with electrical codes and safety standards. System Integration:



PV system to the existing electrical system can be quite confusing. An improper connection Meter-main combos have a main breaker directly connected into the meter base. This set-up has no accessible line side conductors. 2/15. straight forward and requires the least amount of

PHOTOVOLTAIC STRAIGHT PANEL BASE

calculations. However, there are some

PHOTOVOLTAIC STRAIGHT PANEL BASE



425W Half-Cell PERC Longi Solar Panel - Single/Full Pallet. Price From ?195.00. Sales Tax Included | Free UK Asked Questions, and helpful advice. If you can't find it in the Help Centre, then just ask and we'll attempt to send a straight, ???



KU Leuven researchers have developed rooftop panels that capture both solar power and water from the air. Like traditional PV modules, hydrogen panels are also connected, but via gas tubes instead



Click above to learn more about how software can help you design and sell solar systems. Basic concepts of solar panel wiring (aka stringing) To have a functional solar PV system, you need to wire the panels together to create an electrical circuit through which current will flow, and you also need to wire the panels to the inverter that will convert the DC power produced by the panels ???



When it comes to choosing the right structure for photovoltaic panels, several factors must be carefully considered. The surface where the panels will be installed; The desired orientation; Geographic location are ???



The graphical representation on the experimental test rig with photo voltaic panel and the position of instruments to measure the parameters are shown in Fig. 3. The area of the photovoltaic panel is 1 m^2 , and beneath the photo voltaic panel copper tubes in spiral arrangement is made to extract the heat from the panel absorber plate. Mono-crystalline PV ???

PHOTOVOLTAIC STRAIGHT PANEL BASE



Increase in temperature of PV cells leads to a notable fall in their electrical efficiency, which is known as a major fault of photovoltaic (PV) panels. Among several methods in cooling PV cells, this article deals with aimed to study the effect of two fin arrays, i.e. straight and wavy. Each one has been tested in two various numbers of 10 and 20, with and without wind ???



Made from durable aluminium alloy, this mounting rail forms part of a solar panel bracket system for fixing to a pitched or flat roof. Buy now at HDM Solar. Fastensol 3300mm Black Base ???



PV technology is expected to play a crucial role in shifting the economy from fossil fuels to a renewable energy model (T. K?berger, 2018).Among PV panel types, crystalline silicon-based panels currently dominate the global PV landscape, recognized for their reliability and substantial investment returns (S. Preet, 2021).Researchers have developed alternative ???



It's a bit like creating a small eco-friendly zone right in your solar panel area. Long-Term Environmental Benefits: Over their lifetime, solar panels can produce a huge amount of renewable energy. This means less burning of fossil fuels, less air pollution, and a healthier planet. It's an investment that keeps giving back to the environment.



All solar panel strings connected in parallel have to feature the same voltage, and they also have to comply with the NEC 690.7, NEC 690.8(A)(1), and NEC 690.8(A)(2). Modules need to be the same model in all cases in order to ???

PHOTOVOLTAIC STRAIGHT PANEL BASE



Modules with flexible textile base, foldable and furlable, contrary to glass-based panels. Thin Photovoltaic Cells. CIGS thin photovoltaic layers with ever increasing efficiency (currently at 17%) Best W/kg Ratio. A photovoltaic product tailored to various mobile, embedded and nomadic applications : 340 W/kg.



The GSE GROUND SYSTEM has been designed to allow the installation of 95% of photovoltaic modules on the ground. Its robustness and its material guarantee makes it a perfectly designed product for a quick and reliable execution. ???