

PHOTOVOLTAIC TEST PANEL USE SPECIFICATIONS AND STANDARDS



Do solar panels meet IEC 61215 standards? Solar panels that meet IEC 61215 standards are tested on the following (and more!): IEC 61215 tests also help determine a panel's performance metrics at standard test conditions (STC), including temperature coefficient, open-circuit voltage, and maximum power output. What are Standard Test Conditions (STC)?



rooftop PV systems to be installed according to the manufacturer's instructions, the National Electrical Code, and Underwriters Laboratories product safety standards [such as UL 1703 (PV modules) and UL 1741 (Inverters)], which are design requirements and testing specifications for PV-related equipment safety (see Equipment Standards below).⁵



The PV modules must qualify (enclose Test Reports/Certificates from IEC/NABL accredited laboratory) as per relevant IEC standard. The Performance of PV Modules at STC conditions must be tested and approved by one of the IEC/NABL Accredited Testing Laboratories. 13. PV modules used in solar power plant/ systems must be warranted for 10 years for



What are 500W Solar Panel Specifications? On the basis of the solar panel manufacturers and solar panel model, two 500-watt solar panels can have varying specifications. However, in general, these are 500W solar ???



Safety of power converters for use in photovoltaic power systems. Part 2: Particular requirements for inverters Categories: Solar energy engineering: GEL/82 Photovoltaic Energy Systems: Public comment BS EN IEC 62548-1/AMD1 ED1: BS EN 62548-1/AMD1 ED1 Amendment 1. Photovoltaic (PV) arrays. Part 1. Design requirements

PHOTOVOLTAIC TEST PANEL USE SPECIFICATIONS AND STANDARDS



2.1 Overview of specifications and regulations 7 In addition to referencing international electro-technical photovoltaic standards such as IEC 61215, IEC 61646 and IEC 61730, typical standards from the building sector are also included, such as a test procedure and criteria for the PV modules with the complete assembled units, including



93 This Standard shall be used in conjunction with the scheme document MCS 001 and any other 94 guidance and supplementary material available on the MCS website specifically referring to this 95 Standard (MIS 3002). 96 NOTES: 97 This Microgeneration Installation Standard makes use of the terms "must", "shall" and "should"



Understanding Solar Panel Basics Solar Panel Components. To understand solar panel specifications, it's crucial to grasp the components that make up a solar panel. Solar Cells: Solar cells are the heart of a solar panel. They are made of semiconductor materials, usually silicon, that convert sunlight into electricity through the photovoltaic effect.

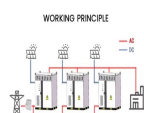


The process of using Standard Test Conditions involves subjecting a solar panel to specific conditions to determine its power output and efficiency. The process is methodical and meticulous, involving careful control ???



Standard Test Conditions (STC) are used to determine the power output of solar panels. Under Standard Test Conditions, solar panels are tested at 25°C (77°F) and exposed to 1,000 watts per square meter (1 kW/m²) of solar irradiance when the air mass is at 1.5. Just like EPA mileage estimates on cars allow you to do some comparative shopping, the ???

PHOTOVOLTAIC TEST PANEL USE SPECIFICATIONS AND STANDARDS



To support the growing solar panel industry, Standards Australia Technical Committee EL-042, Renewable Energy Power Supply Systems and Equipment, has recently published revised standard AS/NZS 5033:2021, Installation and safety requirements for photovoltaic (PV) arrays to ensure safeguards are in place.



Temperature: Solar panel efficiency decreases as temperatures rise. Higher temperatures can reduce the voltage output of the panels, affecting their overall performance. Managing panel temperature is vital for maintaining efficiency. c. Shading: Even partial shading of a solar panel can drastically reduce its output. Shadows from nearby objects



Solar panel power. The power of the Meyer Burger White panel is expressed as 380-400 Watt peak capacity (Wp). This means that in optimal (test) conditions, the panels generate a maximum of between 380-400 Watts of energy. Technologies used. The next blurb advertises two different technologies. Heterojunction technology; SmartWire Connection



Standard solar panel specification sheet: Page 1. Most standard solar panel specification sheets are a two page affair. The key parameters are as follows: Output (Watts), as measured at standard test conditions (STC) Module efficiency (%) Power tolerance; Max power at NOCT (W) All of these are discussed below.



These test chambers are designed with an extra wide or high interior test space to accommodate various size panels. These test chambers are designed to meet common solar panel test specifications for IEC 61646, 61215, 61730, 62108 ???

PHOTOVOLTAIC TEST PANEL USE SPECIFICATIONS AND STANDARDS



from WG2 are the qualification test standards ??? IEC 61215 for Crystalline Silicon, IEC 61646 for Thin Film and IEC 61730 for PV Module Safety as well as IEC 62108 for CPV written by WG7. These standards have gone a long way to eliminate module infant mortality and therefore to help establish PV as a viable commercial business.



is the industry standard that defines the design and qualification of silicon PV modules for long-term operation in open-air, terrestrial applications.. With a long history dating back to 1993, the IEC 61215 standard ???



This article explores essential solar panel certifications and testing standards, detailing their critical role in ensuring panel quality, safety, and performance, and outlines necessary installer qualifications. Testing for efficiency ratings involves assessing the panel's output under standard test conditions, giving users a reliable



the mounted aluminum framed PV panels (i.e., other PV technologies or ground mount systems), EPA recommends that an installer certified by the North American Board of Certified Energy Practitioners (NABCEP) determine the ideal system for the project's unique building environment.



There are several terms associated with solar panels and ratings. Go to the back of the solar panel and look at the nameplate or data sheet to get the correct solar panel specification. Below is the explanation of the specification you will find there: Standard Test Conditions (STC) STC is the set of criteria to be tested on a solar panel.

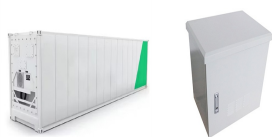
PHOTOVOLTAIC TEST PANEL USE SPECIFICATIONS AND STANDARDS



A solar panel spec sheet provides valuable information about a solar panel and can help when configuring a solar PV system. Below is a list of some important electrical specifications within solar panel specification sheets. It's the current you want to see when the panel is hooked up to a charge controller under standard test



STC means that we measure out solar panel output at Standard Test Conditions, which are: We are going to look at how this effect the power rating we found on solar panel specification sheets. It is important to note that in the 2016 IEC ???



Hi Mashiur, To obtain IEC 61215 on your solar panels, you'll need to submit your panels with a certification body, such as TUV Sud, TUV Rheinland or VDE, and pass their stringent tests 's quite a long process and ???



Learn about PV module standards, ratings, and test conditions, which are essential for understanding the quality and performance of photovoltaic systems. PV modules adhere to specific standards to ensure safety and ???



STC is used by solar panel manufacturers to test and rate their panels. The value that interests us is the maximum power (P_{max}) or rated power (P_r), which is the nominal power of a solar panel when you look to buy one. It could also be called peak power. In a specification sheet, it's always indicated in a section with STC nominated nearby.

PHOTOVOLTAIC TEST PANEL USE SPECIFICATIONS AND STANDARDS



PV Module Standards and Codes. PV modules installed in the United States must conform with Underwriters Laboratories (UL) 1703 Safety Standard for Flat-Plate Photovoltaic Modules and Panels. This standard ???



Overview: Technical Standards ???Key South African Documents
 ???NRS 097 (Industry Specifications) ???SANS 10142-1-2 (Wiring Standard for SA) ???RPP Grid Code (Required by NERSA) ???NRS 052 / SANS 959 (Off Grid PV systems) ???NRS 048 (Power Quality)
 ???International Documents ???IEC 62109: Safety of power converters for use in photovoltaic power systems



Contents. 1 Key Takeaways; 2 STC Solar: Defining Standard Test Conditions. 2.1 Defining STC; 2.2 Parameters Used in STC Testing; 2.3 Establishing a Common Industry-Wide Standard; 3 Testing Conditions: Factors Impacting Module ???



As we can see, those 60-cell, 72-cell, and 96-cell solar panel dimensions are a bit theoretical. These are the practical solar panel dimensions by wattage from solar panels that are actually sold on the market (made by SunPower, Panasonic, QCells, REC Solar, Renogy, Bluetti, and so on)..
 Note: You can allow for up to a 5% difference in both length and width due to different solar ???



The nameplate ratings on photovoltaic (PV) panels and modules summarize safety, performance, and durability specifications. Safety standards include UL1730, UL/IEC61730, and UL7103, a recent standard for building integrated photovoltaics (BIPV). Safety standards ensure that PV modules demonstrate non-hazardous failure modes.