

PORT MORESBY SINO ENERGY STORAGE PROJECT



What is Port Moresby power station? The Port Moresby Power Station will provide reliable power to Port Moresby and is the lowest cost dedicated grid connected thermal generation in the country. Replacing heavy fuel oil and diesel, the gas-fired power plant also brings a material reduction in the environmental impact from power generation in PNG.



Is png negotiating a power purchase agreement for Port Moresby? According to Andrew Ogil, chairman of PNG Power, the state is currently negotiating a power purchasing agreement to supply Port Moresby starting in 2020. It is being financed by the Hunan Provincial Government and the Export-Import Bank of China, along with AG Investment Group.



Where does the Port Moresby system come from? The Port Moresby system's generation comes from four hydropower stations; the 62.2-MW Rouna system, located along the Laloki River; the controlled water storage in the Sirinumu Reservoir; the 30-MW diesel and gas turbine thermal power station at Moitaka; and the generator located at the Sirinumu Dam.



What is png hydro development Limited doing in Port Moresby? The company PNG Hydro Development Limited has invested K650 million in the project which is one of Central Province's biggest assets that will supply electricity not only to Port Moresby but the whole Southern region in the near future.



How many turbines does Port Moresby powerhouse have? The powerhouse has four turbines with a total installed capacity of 50 MW. Once fully operative, the plant will provide electricity to about 40 per cent of homes and help PNG's Nation's Capital, Port Moresby, to meet its growing energy demands.

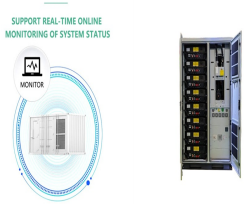
PORT MORESBY SINO ENERGY STORAGE PROJECT



Are oil-based power stations the future of PNG? Oil-based power stations also serve isolated communities in the region, according to APEC. According to the Asian Development Bank (ADB), PNG's hydropower resources could have the potential for up to 10,000 MW of generation capacity, although at present that number is closer to 215 MW.



The impact of the Project will be increased economic activity for PPL residential and business customers. The outcome of the Project will be improved power supply for Port Moresby. 3. Outputs. The outputs of the project are as follows: (i) Hydropower upgrade and rehabilitation, consisting of (a) upgrade of Rouna 1



The Port Moresby system's generation comes from four hydropower stations; the 62.2-MW Rouna system, located along the Laloki River; the controlled water storage in the Sirinumu Reservoir; the 30-MW diesel and gas turbine thermal power station at ???



expand its energy sector in the Port Moresby Power Grid Development Project (PPGDP) through a sovereign loan fund. The designated implementing agency is PNG Power Ltd (PPL), a fully integrated power authority responsible for the generation, transmission, distribution and retailing of electricity throughout Papua New Guinea.



Papua LNG Project is a planned Liquefied Natural Gas (LNG) production project in Papua New Guinea. Set to be located adjacent to the existing PNG LNG processing facilities, the project will have four LNG trains with a combined capacity of 4 million tonnes per year (Mt/y). TotalEnergies operates the project with 40.1% interest.

PORT MORESBY SINO ENERGY STORAGE PROJECT



It is also the only terminal in Port Moresby that offers mobile cranes (non-ship geared) and caters to vessels with drafts under 12.5m. Considered to be in an optimal location???benefiting from access to both Southeast Asia and the South Pacific regions??? PNG's continuing growth makes the Port of Motukea a vital development.



Located in the nation's capital city, Port Moresby Power Station is Papua New Guinea's first dedicated, grid-connected, gas-fired power plant. The 58.7-megawatt facility was ???



PNG Prime Minister James Marape unveiled the government's intention to construct vital infrastructure for fuel storage in the country. Cooperation Agreement to potentially establish fuel bunkering in key locations such as Port Moresby, Lae, and Manus. disclosed ongoing considerations regarding the acquisition of Puma Energy's facilities



fossil fuel consumption, increasing access to energy supply and improving network reliability in the Port Moresby power grid. 2.0 BACKGROUND OVERVIEW The Port Moresby Power Grid Development Project (PPGDP) is funded by ADB loan L2998/29991. The PPGDP agreement was signed between ADB, the Independent Public



AG Investment are Leaders in Quality Civil engineering, infrastructure and Energy development in Papua New Guinea. AG Investment are Leaders in Quality Civil engineering, infrastructure and Energy development in Papua New Guinea. Finschhafen Limestone Project: Paving the Way for Local Development. Aug 23 2 min read.

PORT MORESBY SINO ENERGY STORAGE PROJECT



access to energy and improving network reliability in the grid. 2.0
BACKGROUND OVERVIEW The Port Moresby Power Grid Development Project is funded by ADB loan 2998/2999-PNG 1. The Project Agreement was signed between ADB, the Independent Public Business Corporation (IPBC) 2, and PPL on the 28th of May 2013. The ADB loan and counterpart funding



The Papua New Guinea liquefied natural gas (PNG LNG) project is a new gas project championed by ExxonMobil, to realise the potential of three large gas discoveries in the southern and western highlands of the country. The integrated project includes gas production, processing and liquefaction facilities, as well as offshore and onshore pipelines.



Senior Project Manager, IICA-3, Port Moresby, Papua New Guinea Organization. UNOPS; Posted 11 Jun 2024 Closing date 20 Jun 2024. (Battery energy storage system) with backup from the existing



Home / About / Our operations / LNG Plant. LNG Plant. The LNG Plant is located 20 kilometres northwest of Port Moresby, at Caution Bay on the south coast of PNG's Central Province. The LNG Plant receives natural gas from the Hides Gas Conditioning Plant through a ???



AG Investment started working on the Edevu-Moitaka 132kV Transmission Line Project at the end of 2022, this ambitious undertaking involves building 104 towers to connect the grid and bring clean and reliable energy to the region. This project will connect the Edevu Hydropower Station to the Port Moresby grid. Leading the charge is Mr. Phillip Stagg, an ???

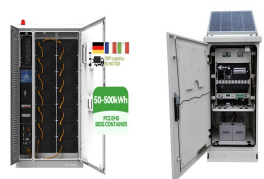
PORT MORESBY SINO ENERGY STORAGE PROJECT



hydropower plants. It is aimed at reducing fossil fuel consumption, increasing access to energy supply and improving network reliability in the Port Moresby power grid. 2.0 BACKGROUND OVERVIEW The Port Moresby Power Grid Development Project (PPGDP) is ???



The LNG project is located 20km northwest of Port Moresby, at Caution Bay on the south coast of Papua New Guinea's (PNG's) Central Province. It is being developed under a JV between Total E& P PNG (TEP PNG) with a 40.13% stake, which is also the operator, ExxonMobil with a 37.03% stake and Oil Search with a 22.84% stake.



The Edevu Hydro Power Plant is expected to produce 50 Megawatt at the completion of the project which account for 40% of the demand in Port Moresby. The power plant is located in the Kariku District of Central Province. The ???



Brunel provided skilled professionals and trades craft labour for the full life cycle of the Papua LNG Project. Learn more about the services Brunel provided. Port Moresby, Southen and Western Highland, Brisbane and Houston which includes a gas conditioning plant in hides and liquefaction and storage facilities near Port Moresby with a



hydropower plants. It is aimed at reducing fossil fuel consumption, increasing access to energy supply and improving network reliability in the Port Moresby power grid. 2.0 BACKGROUND OVERVIEW The Port Moresby Power Grid Development Project (PPGDP) is funded by ADB loan L2998/29991. The PPGDP agreement was signed between ADB, the Independent Public

PORT MORESBY SINO ENERGY STORAGE PROJECT



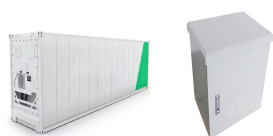
Today's top 23 Project Manager jobs in Port Moresby, National Capital District, Papua New Guinea. Leverage your professional network, and get hired. New Project Manager jobs added daily. Puma Energy Port Moresby, National Capital District, Papua New Guinea Actively Hiring 5 days ago Branch Manager - Retail - Based in Papua New Guinea



The project will upgrade and extend the transmission and distribution grid, improve substation capacity, as well as upgrade and rehabilitate two hydropower plants. It is aimed at reducing ???



Perth-based LNG engineer Clough said the natural gas-fueled Port Moresby power station in Papua New Guinea has been officially opened. The power station is the first-ever utility-scale gas engine project in the country. The facility, developed by NiuPower, a partnership between Oil Search and Kumul Petroleum, uses natural gas supplied by

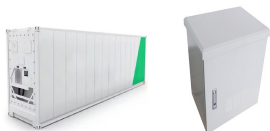


InterOil is building a fully-integrated energy company in PNG, with its core asset being the refinery. piling operations for the jetty and the procurement of steel for the storage tanks. The construction project included a 1.9 million barrel storage tank farm, a 32,500bpd crude distillation unit, a 5,000bpd hydrodesulphurisation (HDS) unit



access to energy and improving network reliability in the grid. BACKGROUND OVERVIEW The Port Moresby Power Grid Development Project is funded by ADB loan 2998/2999-PNG1. The Project Agreement was signed between ADB, the Independent Public Business Corporation (IPBC)2, and PPL on the 28th of May 2013. The ADB loan and counterpart funding

PORT MORESBY SINO ENERGY STORAGE PROJECT



The total area of Port Moresby is 267.6 km² with a total coastline length of 88.14 km that extends from Fairfax Harbour to the Bootless Bay and is enclosed by the Central Provinces land boundaries (Fig. 4.1). The coastal resources of Port Moresby (in Fig. 4.7) contain high biodiversity locations including the mangroves, the coral reefs and bays.



Detailed Design (Phase 2) on Port Moresby Sewerage System Upgrading Project Final Report 5-1 CHAPTER 5 DETAILED DESIGN 5.1 Design Policy and Methodology 5.1.1 Basic concept for facility design A sewerage project has a long operation life and the facilities of sewerage system are required its sustainability.



The first phase of the proposed project which is the feasibility study of a) different renewable energy options, such as solar PV and BESS (Battery energy storage system) with backup from the existing network electricity supply through the Ramu grid and b) the upgrade of the potable water, wastewater and solid waste systems, for Sopas District



The upgrade and rehabilitation project will reduce cost and fossil fuel consumption, increase access, connectivity and improve network reliability on the Port Moresby power grid. The project will assist PNG Power to expand renewable energy generation, connect currently unserved customers and significantly improve the quality of electricity supply.



hydropower plants. It is aimed at reducing fossil fuel consumption, increasing access to energy supply and improving network reliability in the Port Moresby power grid. II. BACKGROUND OVERVIEW The Port Moresby Power Grid Development Project (PPGDP) is funded by ADB loan L2998/29991. The PPGDP agreement was signed between ADB, the Independent Public

PORT MORESBY SINO ENERGY STORAGE PROJECT



Head Office ??? Port Moresby Portion 3793, Napanapa Road, Motukea, National Capital District, PNG. P O Box 211, Konedobu, NCD. P: +675 7411 1833 | E: info@pcspng . Area and Facilities: Bonded Storage and Warehouse and Lay Down Yard ??? 8,000sqm. Other Locations Pacific Cargo Services have locations servicing the following regions. Lae | Kimbe