

# POWER PLANT ENERGY STORAGE BOX



Pumped storage hydropower can provide energy-balancing, stability, storage capacity, and ancillary grid services such as network frequency control and reserves. This is due to the ability of pumped storage plants, like other hydroelectric plants, to respond to potentially large electrical load changes within seconds.



In addition, several other supplementary components are necessary for this integration, including storage and processing capabilities for hydrogen. Chen et al. [29] suggested implementing battery energy storage along with a nuclear power plant (NPP) in order to solve the problem of grid stability. An economic analysis was performed to determine



Jiang et al. consider those two renewable energy sources, geothermal and solar, each of them individually coupled to a sCO<sub>2</sub> recompression cycle, but with an integrated operation: the base-load power is supplied by the geothermal plant whereas the solar thermal plant generates supplementary power to cover the peak electricity demand.



10 ? In a special meeting Tuesday night, the Blue Lake City Council heard from a company that wants to demolish the Blue Lake power plant and replace it with energy storage batteries. The council chose ???



This article provides a comprehensive guide on battery storage power station (also known as energy storage power stations). These facilities play a crucial role in modern power grids by storing electrical energy for later use. The guide covers the construction, operation, management, and functionalities of these power stations, including their contribution to grid stability, peak ???

# POWER PLANT ENERGY STORAGE BOX



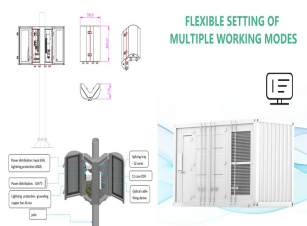
Technically, we showed that thermal energy storage could be coupled with supercritical power plant for grid energy storage based on electrical resistive heating technology, solar salt sensible heat storage, molten salt-water/steam heat exchangers, etc. Thermodynamic analysis showed the integrated system has the advantage in terms of thermal



A residential energy storage system is a power system technology that enables households to store surplus energy produced from green energy sources like solar panels. This system beautifully bridges the gap between fluctuating energy demand and unreliable power supply, allowing the free flow of energy during the night or on cloudy days.



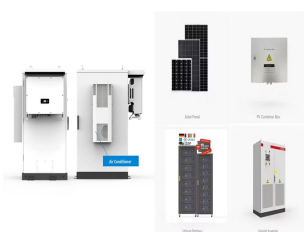
Thermal energy storage is most commonly associated with concentrated solar power (CSP) plants, which use solar energy to heat a working fluid that drives a steam turbine to generate electricity. In some cases, reservoirs of the heated working fluid can be stored and used by the steam generation system minutes or even hours after solar



Overview Construction Safety Operating characteristics Market development and deployment See also



"When it comes to actual costs, energy storage is not cheap," says Imre Gyuk. We can see where costs stand today, but they'll drop as more storage goes onto the grid. Let's start with storage at power plants. As we learned earlier, an electric company may store energy at a power plant to supply power on high-demand days.



The rapid increase of BESS and hybrid projects on the bulk power system (BPS) warrants a look at where this technology started and how it can positively impact the BPS. This article will ???

# POWER PLANT ENERGY STORAGE BOX



A battery energy storage system (BESS) is an electrochemical device that charges (or collects energy) from the grid or a power plant and then discharges that energy at a later time to provide electricity or other grid services when needed. Several battery (see text box below) and system reliability. 3. Operating Reserves and Ancillary Services:



Since supplying the main components for the Gangneung Hydroelectric Power Plant (41MW x 2 units), we have participated in all the modernization and new build projects of hydroelectric and pumped-storage hydro power plants in Korea, including the ones in Muju (300MW x 2 units), Samyangjin (300MW x 2 units), Sancheong (350MW x 2 units), Yangyang (250MW x 4 units) ???



Virtual power plants (VPPs) provide energy balance, frequency regulation, and new energy consumption services for the power grid by integrating multiple types of flexible resources, such as energy storage and flexible load, which develop rapidly on the distribution side and show certain economic values [3, 4].



The Riedl energy store (ESR) is an important element for climate protection and a sustainable energy future. As owner of Donaukraftwerk Jochenstein AG, VERBUND is planning an ultra-modern pumped storage power plant at Untergriesbach in the ???



Bioenergy is used as primary fuel for Thermal Storage Power Plants in order to guarantee firm power capacity at any time just on demand in order to close the residual load gaps of the power sector. ??? PV and energy storage integrated to TSPP save as much biofuel as possible in order to reduce the pressure on the limited available bioenergy

# POWER PLANT ENERGY STORAGE BOX



The benefits of energy storage are, like renewable energy itself, unlimited: lower costs, zero CO2 emissions, with untold benefits for both the environment and humanity. And, as is the case with renewable energy, BESS can create jobs. According to an article that was published on LinkedIn in October 2023 "The growth of the BESS industry has led to the development of new ???



The development of the wind energy industry is seriously restricted by grid connection issues and wind energy generation rejections introduced by the intermittent nature of wind energy sources. As a solution of these problems, a wind power system integrating with a thermal energy storage (TES) system for district heating (DH) is designed to make best use of the wind power in the ???



At the time of this writing, utility-scale molten salt power tower concentrating solar plants are a relatively new technology with the ability to be coupled with comparatively cost-efficient thermal energy storage (Madaeni et al. 2011; Denholm and Mehos 2014; McPherson et al. 2020); a major drawback lies in their high upfront capital cost, though this has been falling ???



Thermal energy storage (TES) is increasingly important due to the demand-supply challenge caused by the intermittency of renewable energy and waste heat dissipation to the environment. [37] and solar power plants [38]. The scope of this review paper is to provide an extensive and detailed overview of TES materials mainly the PCMs. It covers



Start, stop or move energy service; Wisconsin electric services and programs; Michigan electric services and programs; Natural gas services and programs; Power Plants and Storage Facilities. Blue Sky Green Field Wind Energy Center | PDF; Bluff Creek Liquefied Natural Gas Storage Facility | PDF;

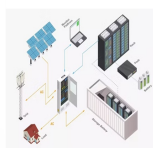
# POWER PLANT ENERGY STORAGE BOX



With the increasing participation of wind generation in the power system, a wind power plant (WPP) with an energy storage system (ESS) has become one of the options available for a black-start power source. In this article, a method for the energy storage configuration used for black-start is proposed. First, the energy storage capacity for starting a single turbine was ???



power plants with synchronous generators to variable generation decreases with increasing penetrations of renewables, future power systems will be more dynamic. With fewer is a combination of energy storage (storing potential energy) and a conventional power plant. This report covers the electrical systems of PSH plants, including the



Virtual Power Plant for trading flexibilities. As a digital platform, the Virtual Power Plant allows numerous application cases and business models with distributed energy resources. This also includes tapping the flexibility potential by digitally connecting solar and wind parks with other generation technologies, storage systems and energy



Throughout 2019???2020, Idaho National Laboratory (INL) worked closely with Argonne and NREL to demonstrate the technical potential and economic benefit of co-locating and coordinating multiple run-of-river hydropower plants with different types of energy storage devices, creating "virtual reservoirs" with potential to function similarly to conventional reservoir ???



For conventional power plants, the integration of thermal energy storage opens up a promising opportunity to meet future technical requirements in terms of flexibility while at the same time

# POWER PLANT ENERGY STORAGE BOX



Box 1. What is plant power? (Salicaceae) are used in thermal power plants. Besides primary energy and electricity, biomass can also produce heat and transport fuels, as well as bio-based materials and biochemicals. 2020), they do positively impact carbon draw-down and storage within the plant, but choice of species is critical to



For both the United States and the rest of the world, reaching renewable energy targets depends on hybrid power plants featuring battery storage. And Enel Green Power is leading the way in this field, particularly in the Lone Star State of Texas. As renewable energy continues to grow in the US and Canada, so does the demand to install



Example - Hydro-power. The theoretically power available from a flow of 1 m<sup>3</sup>/s water with a fall of 100 m can be calculated as.  $P = (1000 \text{ kg/m}^3) (1 \text{ m}^3/\text{s}) (9.81 \text{ m/s}^2) (100 \text{ m}) = 981\,000 \text{ W} = 981 \text{ kW}$  Efficiency. Due to energy loss the practically available power will be less than the theoretically power.