

# POWER STATION AND PHOTOVOLTAIC SUPPORT INSTALLATION SPECIFICATIONS



What are the specifications for a PV module? r the specifications for the PV Module is detailed below: The PV modules must be PID compliant, salt, mist & ammonia resistant and should withstand weather conditions for the project life cycle. The back sheet of PV module shall be minimum of three layers with outer layer



What are the guidelines for solar PV system sizing? ms. 4. Guidelines for Grid Connected System Sizing Solar PV system sizing will be limited by two factors, the amount of physical space available for the installation and the electricity consumption profile of the building (load profile). Current regulations do not provide favourable incentives for systems to be



What are the certification requirements for solar PV modules? The PV modules shall conform to the following standards: IS 14286: Crystalline silicon terrestrial photovoltaic determine the resistance of PV Modules to Ammonia (NH<sub>3</sub>) The PV module should have IS 14286 qualification certification for solar PV modules (Crystalline silicon terrestrial photovoltaic)



Who is required to install a solar PV system? All installation work must be performed by accredited CEC installers and documentation proving such accreditation must be submitted to the University. Electrical design of the system must be completed and signed off by an accredited solar PV designer accredited with the CEC.



What is a solar PV power plant system? Self Government Buildings, State Government buildings. 3. Definition Solar PV power plant system comprises of C-Si (Crystalline Silicon)/Thin Film Solar PV modules with intelligent Inverter having MPPT technology and Anti-Islanding feature and associated power

# POWER STATION AND PHOTOVOLTAIC SUPPORT INSTALLATION SPECIFICATIONS



What is the installation phase of a photovoltaic system? The installation phase of photovoltaic (PV) systems is a critical step that involves several key activities to ensure the system operates effectively and safely. Here's a more detailed look at what this phase entails:



The report presents these guidelines according to the following topics: O&M performance indicators and standard O&M operator services, guidelines for monitoring, forecasting, and analysis of PV



Technical specifications for solar PV installations 1. Introduction The purpose of this guideline is to provide service providers, municipalities, and interested parties with minimum technical ???



For China, some researchers have also assessed the PV power generation potential. He et al. [43] utilized 10-year hourly solar irradiation data from 2001 to 2010 from 200 representative locations to develop provincial solar availability profiles was found that the potential solar output of China could reach approximately 14 PWh and 130 PWh in the lower ???



650kW. The red line represents the peak output of a Solar PV system with peak power 650kWp. Demand peaks and solar PV generation peaks align well in the case of typical office buildings. In sizing a PV system designed only to provide for own use with minimal excess energy fed into the

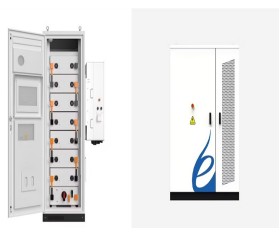
# POWER STATION AND PHOTOVOLTAIC SUPPORT INSTALLATION SPECIFICATIONS



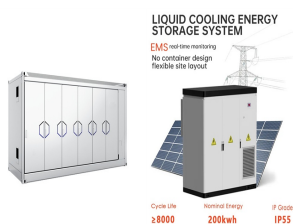
3.2 PV-Powered charging station for EVs: power management with integrated V2G 4. Societal impact and social acceptance of PV-powered infrastructure for EV charging and new services 4.1 Case study in France: survey on the social acceptance of PV-powered infrastructure and new



1. Introduction. Traditionally, power systems spread over onshore terrain to meet the demand of residential, commercial, and industrial consumers [1]. More recently, though, they have been impelled towards the sea and into the deep sea [2]. They have even been umbilically connected to offshore platforms and have provided power access points for power ???



he installation of rooftop solar PV systems raises issues related to building, fire, and electrical codes. Because rooftop solar is a relatively new technology and often added to a building after it is constructed, some code provisions may need to be modified to ensure that solar PV systems can be accommodated while achieving the goals of the



The Head of Solar Power Naija, Ms. Barbara Izilein while addressing the attendees, on behalf of the REA's Managing Director/CEO, Engr. Ahmad Salihijo Ahmad appreciated the developers for engaging actively at the Agency's Roundtables, assuring them of the Agency's continued commitment towards providing the necessary support needed for a vibrant, private sector ???



The results show that the power generation during the operation and maintenance of the photovoltaic power station studied exceeds the theoretical level, confirming the feasibility of the

# POWER STATION AND PHOTOVOLTAIC SUPPORT INSTALLATION SPECIFICATIONS



2. Establish Support Rails: Install the support rails that will retain the mounting system after the roof hooks are firmly set. There are numerous techniques to install support rails. They can be positioned on short rails, cross rails, or in a parallel arrangement. This is dependent on the requirements and design.



Modeling results showed that the total net present value of a photovoltaic power charging station that meets the daily electricity demand of 4500 kWh is \$3,579,236 and that the cost of energy of



Solar photovoltaic bracket is a special bracket designed for placing, installing and fixing solar panels in solar photovoltaic power generation systems. The general materials are aluminum alloy, carbon steel and stainless steel. The related products of the solar support system are made of carbon steel and stainless steel. The surface of the carbon steel is hot-dip galvanized and will ???



Commercial and Industrial PV Weather Stations. The PVmet 200 is the most popular weather station for C&I solar. It includes 2 irradiance sensors, commonly used to measure global irradiance and plane of array. The weather station features sensors for wind speed and direction, as well as ambient air and panel temperature. Utility Solar PV Weather



Solar PV Guidebook Philippines support mechanisms, such as feed-in tariff (FIT) and net-metering, is a top priority for DOE. Most of the administrative and legal procedures for RE projects are taken from procedures for constructing traditional power stations and have not yet been fully adapted to the specific characteristics of RE

# POWER STATION AND PHOTOVOLTAIC SUPPORT INSTALLATION SPECIFICATIONS



The objective of Poland's energy policy is to guarantee energy security while enhancing economic competitiveness and energy efficiency, thus minimizing the power sector's environmental impact and optimizing the use of energy resources in the country. Poland is not the only European country to rely on coal for power generation. Historical factors and large coal ???



The PV array comprises: Bifacial modules, generating 540 W with maximum power usage; a rated voltage of 41.3 V, a maximum power point current of 13.13 A, a short-circuit current of 13.89 A, and 70



Remote sensing technology has the advantages of timely and efficient large-scale synchronous monitoring [], and efforts have been made to map PV power stations predominantly through visual interpretation, machine learning, and deep learning over the last few years [10,11,12,13,14]. Visual interpretation is an accurate and easy-to-implement approach ???



Overview: Technical Standards ???Key South African Documents  
 ???NRS 097 (Industry Specifications) ???SANS 10142-1-2 (Wiring Standard for SA) ???RPP Grid Code (Required by NERSA) ???NRS 052 / SANS 959 (Off Grid PV systems) ???NRS 048 (Power Quality)  
 ???International Documents ???IEC 62109: Safety of power converters for use in photovoltaic power systems



Therefore, State Grid Corporation of China (SGCC) has published two enterprise standards, Q/GDW 617-2011 "Technical specifications for photovoltaic power station connected to the grid" and Q/GDW

# POWER STATION AND PHOTOVOLTAIC SUPPORT INSTALLATION SPECIFICATIONS



In the photovoltaic (PV) solar power plant projects, PV solar panel (SP) support structure is one of the main elements and limited numerical studies exist on PVSP ground mounting steel frames to



4.4 System Installation 49 4.5 Testing and Commissioning 49 Chapter 5: Operation and Maintenance 51 A5.2 Inverter Specifications (Typical) ??? Electrical Characteristics (DC) 86 inputs to policy and decision makers in solar power development, and facilitate innovation in financing mechanisms.



Suppose the PV module specification are as follow.  $P_M = 160 \text{ W Peak}$ ;  $V_M = 17.9 \text{ V DC}$ ;  $I_M = 8.9 \text{ A}$ ;  $V_{OC} = 21.4 \text{ A}$ ;  $I_{SC} = 10 \text{ A}$ ; The required rating of solar charge controller is  $= (4 \text{ panels} \times 10 \text{ A}) \times 1.25 = 50 \text{ A}$ . Now, a 50A charge controller is needed for the 12V DC system configuration.



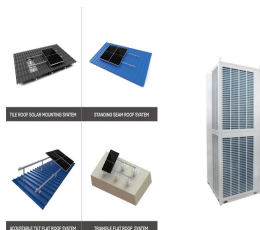
Solar photovoltaic (PV) is one of the prominent sustainable energy sources which shares a greater percentage of the energy generated from renewable resources. As the need for solar energy has risen tremendously in the last few decades, monitoring technologies have received considerable attention in relation to performance enhancement. Recently, the ???



Cost advantages - Solar power systems lower your utility bills and insulate you from utility rate hikes and price volatility due to fluctuating energy prices. They can be used as building materials. They can increase character and value of the building. Purchase of a solar power system allows you to take advantage of available tax and financial

# POWER STATION AND PHOTOVOLTAIC SUPPORT INSTALLATION SPECIFICATIONS

---



??? Design of the solar PV system in accordance with CEC guidelines and appropriate Australian standards including solar PV modules, grid connect solar inverters, solar mounting systems, ???



Roof orientation is another critical factor in site assessment. The system, implemented across an area of 8 square meters, can generate an annual net exergy of 2195.81 kWh, operating at an efficiency of 11.8%. The angle and direction of the roof influence the system's overall performance.