

# PRE-BURIED PANELS SOURCE PHOTOVOLTAIC CURTAIN WALL ACCESSORIES



Combining different materials like glass, metal, stone, or concrete, hybrid curtain walls merge various curtain wall types. It offers a blend of aesthetics, functionality, and structural performance tailored to specific project requirements. 9. ???



Find your solar control curtain wall easily amongst the 11 products from the leading brands (WICONA, M?o, ) on ArchiExpo, the architecture and design specialist for your professional purchases. prefabricated panel curtain wall. BETSINOR COMPOSITES performance benchmarks.

\*Prices are pre-tax. They exclude delivery charges and



with photovoltaic panel (1) metal (1) Submit. Options. transparent (13) decorative (8) with integrated insulation (7) The stick construction line, with the Poliedra Sky Tech 50 and 60 series, offers a system for curtain walls and sky lights, capable of offering extraordinary freedom of configuration, \*Prices are pre-tax. They exclude



Rated 5 out of 5 by Faux Decor Solar from Faux Decor Solar In& #45;lit Pink Blossom Trellis 1 Very good quality Date published: 2024-09-03 Faux Decor Solar In-lit Pink Blossom Trellis 180 x 60cm Reviews - page 2



DOI: 10.1016/j.applthermaleng.2022.119845 Corpus ID: 254708538; Multi-objective optimization of a photovoltaic thermal curtain wall assisted dual-source heat pump system @article{Chang2022MultiobjectiveOO, title={Multi-objective optimization of a photovoltaic thermal curtain wall assisted dual-source heat pump system}, author={Shasha Chang and Guohui ???

# PRE-BURIED PANELS SOURCE PHOTOVOLTAIC CURTAIN WALL ACCESSORIES

,??? 3. . ? 1/4 ?, , ???



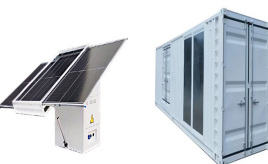
In this study, a novel high-efficient energy-saving vacuum BIPV (building integrated photovoltaic) curtain wall, which combines photovoltaic curtain wall and vacuum glazing technologies, was



An advanced exhausting airflow photovoltaic curtain wall system coupled with an air source heat pump for outdoor air treatment: Energy-saving performance assessment systems have emerged as a promising solar technology that integrates PV panels into the building envelope, generating electricity while serving structural and architectural



A multiple-inlet configuration assisted by a flow deflector behind the PV panel was found to enhance the thermal performance by up to 16% and reduced the peak PV temperatures by 3.5 °C, with a



Long-lasting experience in providing customized solar solutions (PV panels, spandrel panels and dummy modules) for various BIPV projects provides limitless options for panel customization. The advantages of choosing solar modules for energy active buildings empower future cities to move towards energy consumption efficiency while greatly reducing the carbon footprint and ???

# PRE-BURIED PANELS SOURCE PHOTOVOLTAIC CURTAIN WALL ACCESSORIES



1.2 Active Solar Systems. Active solar energy methods primarily involve transforming incoming radiation into heat, cooling, or electricity. An active solar system includes solar devices like photovoltaic panels, collectors, and associated accessories like voltage controllers, blowers, and heat pumps that work together to process the Sun's usable heat.



Download scientific diagram | Examples facade PV walls for building: (a) Facade PV glazing, (b) Curtain PV wall, (c) Rain-screen facade PV, and (d) PV Accessories [19]. from publication: Facade



The photovoltaic curtain wall (roof) system is a comprehensive integrated system combining multiple disciplines such as photoelectric conversion technology, photovoltaic curtain wall construction technology, electrical energy ???



Multi-objective optimization of a photovoltaic thermal curtain wall assisted dual-source heat pump system many scholars have investigated the combination of solar energy and ASHPs. The PVT panel can be integrated as an evaporator [20], [21], [22] or condenser [23] for the heat pump unit, or the PVT collector on the roof can be connected to



At Onyx Solar we provide tailor-made photovoltaic glass in terms of size, shape, transparency, and color for any curtain wall design. Photovoltaic curtain walls transform any building into a self-sufficient energy infrastructure and enhance the building's architectural design. For an optimal balance between energy generation and design, our

# PRE-BURIED PANELS SOURCE PHOTOVOLTAIC CURTAIN WALL ACCESSORIES



The panels become an integral part of the building structure and as such, they have to provide the necessary resistant characteristics and protect them from external agents. With regard to architectural design, the facade acquires a ???



The Poliedra 50 Photovoltaic system is a clean energy source with the lowest environmental impact, as its use does not generate any kind of emission, neither polluting nor acoustic. The panels are made up of silicium cells with a size of 125x125x0.35 mm. If you would like to know more about our Photovoltaic Curtain Wall Facade System



The construction industry plays a crucial role in achieving global carbon neutrality. The purpose of this study is to explore the application of photovoltaic curtain walls in building models and



CURTAIN WALL ACCESSORIES PHOTOVOLTAICS ACCESSORIES catalogues Services. Color service Mid preassembled aluminium RLS PV clamp for panels H=30-32, with spring, screw, cam and washer. View product HE-MIR-35. Pre-order successfully completed



Through a carbon emissions calculation and economic analysis of replacing photovoltaic curtain walls on a large public building in Zhenjiang, China, the results showed that after replacing glass

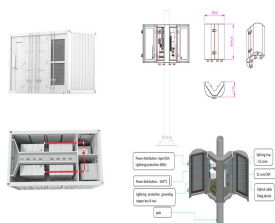
# PRE-BURIED PANELS SOURCE PHOTOVOLTAIC CURTAIN WALL ACCESSORIES



Find your prefabricated panel curtain wall easily amongst the 7 products from the leading brands (ArcelorMittal, Trimo, ) on ArchiExpo, the architecture and design specialist for your professional purchases. Unique concept of prefabricated facades, D2B(R) (Designed to Build) Promisol(R) is a waterproof curtain wall constructive system that



An advanced exhausting airflow photovoltaic curtain wall system coupled with an air source heat pump for outdoor air treatment: Energy-saving performance assessment (BIPV) systems have emerged as a promising solar technology that integrates PV panels into the building envelope, generating electricity while serving structural and



Materials. The standard material for a photovoltaic facade is thin film glass (see picture below). Poly- / mono- crystalline solar glass or panels can also be used (for example we installed these as part of the refurbishment of Oxford Council's Hockmore Tower, pictured above).. Polysolar PS-A opaque series panels (4.6 kWp), Future Business Centre, Cambridge.



However, a shortcoming of the current PV curtain wall with common double-glazed PV modules lies in the poor thermal insulation performance due to the high solar heat gain coefficient (SHGC) and U-Value [11]. BIPV modules can still have a thermal conductivity of 1.1 W/m K, even when inert gas filled up the gap within a double-glazing unit [12].



Photovoltaic double-skin glass is a low-carbon energy-saving curtain wall system that uses ventilation heat exchange and airflow regulation to reduce heat gain and generate a portion of electricity.

# PRE-BURIED PANELS SOURCE PHOTOVOLTAIC CURTAIN WALL ACCESSORIES

---



Photovoltaic double-skin glass is a low-carbon energy-saving curtain wall system that uses ventilation heat exchange and airflow regulation to reduce heat gain and generate a portion of electricity. By developing a theoretical model of the ventilated photovoltaic curtain wall system and conducting numerical simulations, this study analyzes the variation ???



PDF | On Oct 29, 2020, Y H Zhong and others published Research on a New Type of Solar Photovoltaic Solar Thermal Integrated Louver Curtain Wall | Find, read and cite all the research you need on



Wall Mounted Solar Photovoltaic System (Facade / Cladding Application) ??? BIPV & BIPV. More and more high-rise buildings have been installed with Solar facades / cladding Photovoltaic System or Curtain Wall Photovoltaic System to generate free and clean energy and injected into the ???