

PRIMARY DESIGN OF FACTORY ENERGY STORAGE



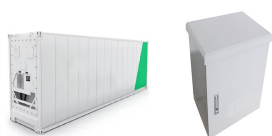
Energy Storage Systems are structured in two main parts. The power conversion system (PCS) handles AC/DC and DC/AC conversion, with energy flowing into the batteries to charge them or being converted from the battery storage into AC power and fed into the grid. Suitable power device solutions depend on the voltages supported and the power flowing.



2 The most important component of a battery energy storage system is the battery itself, which stores electricity as potential chemical energy. Although there are several battery technologies in use and development today (such as lead-acid and flow batteries), the majority of large-scale electricity storage systems



A battery energy storage system (BESS) contains several critical components. This guide will explain what each of those components does. must have a Battery Management System (BMS). The BMS is the brain of the battery system, with its primary function being to safeguard and protect the battery from damage in various operational scenarios



Thermal energy storage is a family of technologies in which a fluid, such as water or molten salt, or other material is used to store heat. This thermal storage material is then stored in an insulated tank until the energy is needed. The energy may be used directly for heating and cooling, or it can be used to generate electricity.



A microgrid system is developed in the PSCAD to verify the hybrid energy storage design with the new droop control method. The Uligam Island in Maldives is selected as the case to build the microgrid. The battery lifetime extension is one of the key indicators, evaluating the hybrid energy storage system.

PRIMARY DESIGN OF FACTORY ENERGY STORAGE



BMS configurations differ from simple devices for small consumer electronics to high-power solutions for large energy storage systems. Within our power electronics design services, we created battery management solutions of varying difficulty, ranging from a simple BMS to a state-of-the-art device integrated into a larger energy storage system.



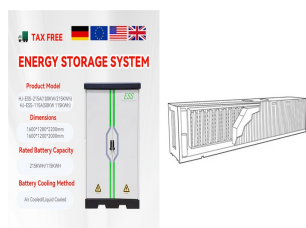
PHD Energy offers a comprehensive lineup of primary batteries, from coin cells to Li-SOCI2 3.6V, serving global markets with technical support in the USA and EU. Our coin cell factory has over 20 years of manufacturing experience specifically on coin cells. The factory has 50 production lines with 1000+ employees, which produce over 500



Adapted from a news release by the Department of Energy's Argonne National Laboratory.. Today the U.S. Department of Energy (DOE) announced the creation of two new Energy Innovation Hubs. One of the national hubs, the Energy Storage Research Alliance (ESRA), is led by Argonne National Laboratory and co-led by Lawrence Berkeley National ???



1. Energy Storage Systems (ESS) 1 1.1 Introduction 2 1.2 Types of ESS Technologies 3 Appendix A. Design and Installation Checklist 25 Appendix B. Contact Information 27 Appendix C. Examples of ESS Deployments in Singapore 28 Energy Storage Systems ESS Factory Acceptance Test FAT Hertz Hz Intermittent Generation Sources IGS

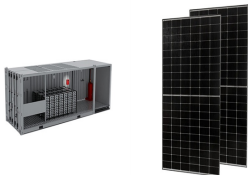


4 UTILITY SCALE BATTERY ENERGY STORAGE SYSTEM (BESS) BESS DESIGN IEC - 4.0 MWH SYSTEM DESIGN This documentation provides a Reference Architecture for power distribution and conversion ??? and energy and assets monitoring ??? for a utility-scale battery energy storage system (BESS). It is intended to be used together with

PRIMARY DESIGN OF FACTORY ENERGY STORAGE



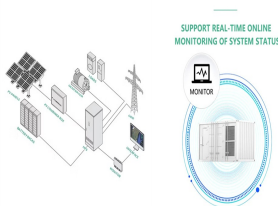
Keywords: low-inertia systems, energy storage, inertial control, primary control, frequency stability, power system design. Citation: Alves EF, Mota DdS and Tedeschi E (2021) Sizing of Hybrid Energy Storage Systems for Inertial and Primary Frequency Control. Front. Energy Res. 9:649200. doi: 10.3389/fenrg.2021.649200



Significant advances in battery energy . storage technologies have occurred in the . last 10 years, leading to energy density increases and battery pack cost decreases of approximately 85%, reaching . \$143/kWh in 2020. 4. Despite these advances, domestic



The battery energy storage system's (BESS) essential function is to capture the energy from different sources and store it in rechargeable batteries for later use. Often combined with renewable energy sources to accumulate the renewable energy during an off-peak time and then use the energy when needed at peak time. This helps to reduce costs and establish benefits ???



Capacitors exhibit exceptional power density, a vast operational temperature range, remarkable reliability, lightweight construction, and high efficiency, making them extensively utilized in the realm of energy storage. There exist two primary categories of energy storage capacitors: dielectric capacitors and supercapacitors. Dielectric capacitors encompass ???



1. The new standard AS/NZS5139 introduces the terms "battery system" and "Battery Energy Storage System (BESS)". Traditionally the term "batteries" describe energy storage devices that produce dc power/energy. However, in recent years some of the energy storage devices available on the market include other integral

PRIMARY DESIGN OF FACTORY ENERGY STORAGE



primary purposes: 1. TO STABILIZE THE GRID Factory/Commercial BESS 0.8 3.6 +35% Residential BESS 1.4 5.6 +31% 2021 2026 Source: Industry ARC Market Report, February 2022. BATTERY ENERGY STORAGE SYSTEMS (BESS) / PRODUCT GUIDE 10 Brian Lineberry Brian is a senior field application



By developing and deploying converters for advanced energy storage, fuel cells and green hydrogen electrolyzers, We are helping to accelerate the energy transition to a more sustainable future. As a world-leading provider of energy storage converters, We are perfectly positioned to support the integration of renewable energy sources.



Energy storage systems providing primary reserve and peak shaving in small isolated power systems: an economic assessment. Int. J. Electr. Integrating life cycle assessment and electrochemical modeling to study the effects of cell design and operating conditions on the environmental impacts of lithium-ion batteries. Renewable and

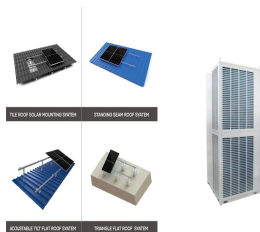


Such a methodology allows the factory operators to optimally size the flexibility capacity (the battery energy storage in this application) needed to operate their industrial facility as a net-zero energy factory. Results show that an optimally controlled stationary energy storage system allows a reduction of energy exchange with the grid up to



Battery Energy Storage Systems are electrochemical type storage systems defined by discharging stored chemical energy in active materials through oxidation???reduction to produce electrical energy. Typically, ???

PRIMARY DESIGN OF FACTORY ENERGY STORAGE



Primary Audience. Utility project managers and teams developing, planning, or considering battery energy storage system (BESS) projects. Secondary Audience. technical specification, procurement process, factory acceptance testing, on-site commissioning and testing, operations and maintenance, contingency planning, decommissioning, removal



Tehachapi Energy Storage Project, Tehachapi, California. A battery energy storage system (BESS) or battery storage power station is a type of energy storage technology that uses a group of batteries to store electrical energy. Battery storage is the fastest responding dispatchable source of power on electric grids, and it is used to stabilise those grids, as battery storage can ???



K) G Acceleration of gravity (m/s^2) Among the various techniques for enhancing the storage and consumption of energy in a thermal energy storage system, the establishment of thermal Stratification



*Recommended practice for battery management systems in energy storage applications IEEE P2686, CSA C22.2 No. 340 *Standard communication between energy storage system components MESA-Device Specifications/SunSpec Energy Storage Model Molded-case circuit breakers, molded-case switches, and circuit-breaker enclosures UL 489



In power systems, high renewable energy penetration generally results in conventional synchronous generators being displaced. Hence, the power system inertia reduces, thus causing a larger frequency deviation when an imbalance between load and generation occurs, and thus potential system instability. The problem associated with this increase in the ???

PRIMARY DESIGN OF FACTORY ENERGY STORAGE



Manufacturing facilities are one among the largest consumers of energy. Efforts to improve energy efficiency are an increasing concern for many manufacturing facility engineering managers. This can be achieved by evaluating energy end uses (e.g., lighting, processing equipment, and heating, air conditioning, and ventilation (HVAC) systems), and by ???



Frequency is a crucial parameter in an AC electric power system. Deviations from the nominal frequency are a consequence of imbalances between supply and demand; an excess of generation yields an increase in frequency, while an excess of demand results in a decrease in frequency [1]. The power mismatch is, in the first instance, balanced by changes in ???



It's important for solar + storage developers to have a general understanding of the physical components that make up an Energy Storage System (ESS). This gives off credibility when dealing with potential end customers to have a technical understanding of the primary function of different components and how they inter-operate



Figure 2. An example of BESS architecture. Source Handbook on Battery Energy Storage System Figure 3. An example of BESS components - source Handbook for Energy Storage Systems . PV Module and BESS Integration. As described in the first article of this series, renewable energies have been set up to play a major role in the future of electrical