

PRINCIPLE OF LITHIUM IRON ENERGY STORAGE BATTERY



What are lithium-ion batteries used for? Not only are lithium-ion batteries widely used for consumer electronics and electric vehicles, but they also account for over 80% of the more than 190 gigawatt-hours (GWh) of battery energy storage deployed globally through 2023.



What are lithium ion batteries? Lithium-ion batteries (LIBs) have nowadays become outstanding rechargeable energy storage devices with rapidly expanding fields of applications due to convenient features like high energy density, high power density, long life cycle and not having memory effect.



What is a lithium-ion battery and how does it work? The lithium-ion (Li-ion) battery is the predominant commercial form of rechargeable battery, widely used in portable electronics and electrified transportation.



Should lithium-ion batteries have a solid or hybrid electrolyte system? It might very well be, however, that also for lithium-ion batteries the incorporation of solid or hybrid electrolyte systems might enable a great push forward regarding performance, cycle life, and safety.



Which lithium insertion material is used for advanced lithium-ion batteries? Ohzuku T, Makimura Y (2001) Layered lithium insertion material of $\text{LiCo } 1/3 \text{ Ni } 1/3 \text{ Mn } 1/3 \text{ O } 2$ for lithium-ion batteries. Chem Lett 30:642 Yabuuchi N, Ohzuku T (2003) Novel lithium insertion material of $\text{LiCo } 1/3 \text{ Ni } 1/3 \text{ Mn } 1/3 \text{ O } 2$ for advanced lithium-ion batteries. J Power Sources 119:121:171

PRINCIPLE OF LITHIUM IRON ENERGY STORAGE BATTERY



Are lithium-ion batteries the future of battery technology? Conclusive summary and perspective Lithium-ion batteries are considered to remain the battery technology of choice for the near-to mid-term future and it is anticipated that significant to substantial further improvement is possible.



Eco-friendly energy resources are naturally variable, with their output changing depending on climatic conditions and the time of day. Battery storage space systems smooth out these fluctuations, storing excess energy when manufacturing is high and releasing it when manufacturing is low.



Basic Research Needs for Next Generation Electrical Energy Storage; Materials Project and Electrolyte Genome; The Hidden Architecture of Energy Storage; Peering into Batteries: X-Rays Reveal Lithium-Ion's Mysteries; Charging Up the Development of Lithium-Ion Batteries; Science Highlight: A Cousin of Table Salt Could Make Energy Storage Faster



Li-ion batteries are highly advanced as compared to other commercial rechargeable batteries, in terms of gravimetric and volumetric energy. Figure 2 compares the energy densities of different commercial rechargeable batteries, which clearly shows the superiority of the Li-ion batteries as compared to other batteries 6. Although lithium metal ???



Lithium-ion battery (LIB) is one of rechargeable battery types in which lithium ions move from the negative electrode (anode) to the positive electrode (cathode) during discharge, and back ???

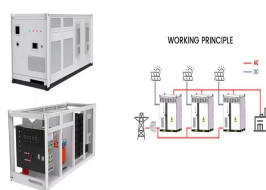
PRINCIPLE OF LITHIUM IRON ENERGY STORAGE BATTERY



2.1 Working Principle Analysis of Energy Storage Batteries. In practical engineering applications, the type of lithium energy storage battery is lithium iron phosphate battery. The active material for the negative electrode of an energy storage lithium battery is generally graphite, petroleum coke, or amorphous carbon, while the active material



Moreover, grid-scale energy storage systems rely on lithium-ion technology to store excess energy from renewable sources, ensuring a stable and reliable power supply even during intermittent



This comprehensive review delves into recent advancements in lithium, magnesium, zinc, and iron-air batteries, which have emerged as promising energy delivery devices with diverse applications, collectively shaping the landscape of energy storage and delivery devices. Lithium-air batteries, renowned for their high energy density of 1910 Wh/kg ???



A. Physical principles A Lithium Ion (Li-Ion) Battery System is an energy storage system based on electrochemical charge/discharge reactions that occur between a positive electrode (cathode) that contains some lithiated metal oxide and a negative Energy Storage Technology Descriptions - EASE - European Association for Storage of Energy



Lithium-ion battery (LIB) is one of rechargeable battery types in which lithium ions move from the negative electrode (anode) to the positive electrode (cathode) during discharge, and back when charging. It is the most popular choice for consumer electronics applications mainly due to high-energy density, longer cycle and shelf life, and no memory effect.

PRINCIPLE OF LITHIUM IRON ENERGY STORAGE BATTERY



A Lithium-Ion Battery Charging (Image Let's Talk Science) Lithium-Ion Batteries Are Ideal for Mobile Applications. Battery size and weight are important for mobile devices like smartphones and wearables. Lithium-ion technology currently has the greatest charge density (stored energy) per weight and volume: Lithium is the most electro-positive



battery, cell design, energy density, energy storage, grid applications, lithium-ion (li-ion), supply chain, thermal runaway . 1. Introduction This chapter is intended to provide an overview of the design and operating principles of Li-ion batteries. A more detailed evaluation of their performance in specific applications and in relation



Diagram illustrates the process of charging or discharging the lithium iron phosphate (LFP) electrode. As lithium ions are removed during the charging process, it forms a lithium-depleted iron phosphate (FP) zone, but in between there is a solid solution zone (SSZ, shown in dark blue-green) containing some randomly distributed lithium atoms, unlike the ???



Lithium iron phosphate battery also has its disadvantages: for example, low-temperature performance is poor, the positive material vibration density is small, the volume of lithium iron phosphate battery of the same capacity is larger than lithium cobalt acid lithium-ion battery, so it does not have the advantage in the micro battery.



Lithium-ion batteries power the lives of millions of people each day. From laptops and cell phones to hybrids and electric cars, this technology is growing in popularity due to its light weight, high energy density, and ability to recharge. So how does it work? This animation walks you through

PRINCIPLE OF LITHIUM IRON ENERGY STORAGE BATTERY



While lithium-ion batteries only provide about four hours of energy storage capacity, iron-air batteries could provide up to one hundred hours of storage, which is around four days. Therefore, iron-air batteries can act as a bridging technology during energy gaps, such as cloudy days, which would otherwise limit solar power plants.



In a lithium-ion battery, which is a rechargeable energy storage and release device, lithium ions move between the anode and cathode via an electrolyte. Graphite is frequently utilized as the anode and lithium metal oxides, including cobalt oxide or lithium iron phosphate, as the cathode.



Conventional energy storage systems, such as pumped hydroelectric storage, lead-acid batteries, and compressed air energy storage (CAES), have been widely used for energy storage. However, these systems face significant limitations, including geographic constraints, high construction costs, low energy efficiency, and environmental challenges.



Lithium-ion battery technology is rapidly being adopted in transportation applications and energy storage industries. Safety concerns, in particular, fire and explosion hazards, are threatening



A lithium-ion or Li-ion battery is a type of rechargeable battery that uses the reversible intercalation of Li^+ ions into electronically conducting solids to store energy. In comparison with other commercial rechargeable batteries, Li-ion batteries are characterized by higher specific energy, higher energy density, higher energy efficiency, a longer cycle life, and a longer

PRINCIPLE OF LITHIUM IRON ENERGY STORAGE BATTERY



In the electrical energy transformation process, the grid-level energy storage system plays an essential role in balancing power generation and utilization. Batteries have considerable potential for application to grid-level energy storage systems because of their rapid response, modularization, and flexible installation. Among several battery technologies, lithium ???



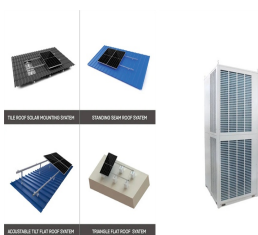
Because of their elevated power compression, low self-discharge feature, practically zero-memory effect, great open-circuit voltage, and extended longevity, lithium-ion batteries (LIBs) have resumed to attract a lot of interest as a probable power storage technology.



The most typical type of battery on the market today for home energy storage is a lithium-ion battery. Lithium-ion batteries power everyday devices and vehicles, from cell phones to cars, so it's a well-understood, safe technology. Lithium-ion batteries are so called because they move lithium ions through an electrolyte inside the battery.



Flywheel energy storage technology is an emerging energy storage technology that stores kinetic energy through a rotor that rotates at high speed in a low-friction environment, and belongs to mechanical energy storage technology. It has the characteristics of high power, fast response, high frequency and long life, and is suitable for transportation, emergency power supply, ???



Lithium-ion batteries are the state-of-the-art electrochemical energy storage technology for mobile electronic devices and electric vehicles. Accordingly, they have attracted ???

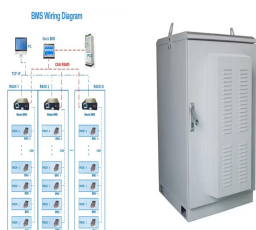
PRINCIPLE OF LITHIUM IRON ENERGY STORAGE BATTERY



Parts of a lithium-ion battery ((C) 2019 Let's Talk Science based on an image by ser_igor via iStockphoto).. Just like alkaline dry cell batteries, such as the ones used in clocks and TV remote controls, lithium-ion batteries provide power through the movement of ions. Lithium is extremely reactive in its elemental form. That's why lithium-ion batteries don't use elemental ???



Lithium iron phosphate (LFP) and lithium nickel manganese cobalt oxide (NMC) are the two most common and popular Li-ion battery chemistries for battery energy applications. Li-ion batteries are small, lightweight and have a high capacity and energy density, requiring minimal maintenance and provide a long lifespan.



Lithium-ion Battery. A lithium-ion battery, also known as the Li-ion battery, is a type of secondary (rechargeable) battery composed of cells in which lithium ions move from the anode through an electrolyte to the cathode during discharge and back when charging.. The cathode is made of a composite material (an intercalated lithium compound) and defines the name of the Li-ion ???



Iron-air batteries could solve some of lithium's shortcomings related to energy storage.; Form Energy is building a new iron-air battery facility in West Virginia.; NASA experimented with iron



Introduction to Lithium-Ion Battery Energy Storage Systems 3.1 Types of Lithium-Ion Battery A lithium-ion battery or li-ion battery (abbreviated as LIB) is a type of rechargeable battery. All lithium-ion technologies today are based on the same principle. Lithium is stored in the anode (or negative electrode) and transported during the

PRINCIPLE OF LITHIUM IRON ENERGY STORAGE BATTERY



The lithium iron phosphate battery (LiFePO₄ battery) or LFP battery (lithium ferrophosphate) is a type of lithium-ion battery using lithium iron phosphate (LiFePO₄) as the cathode material, and a graphitic carbon electrode with a metallic backing as the anode. Due to their low cost, high safety, low toxicity, long cycle life and other factors, LFP batteries are finding a number of roles.



Benefits of Battery Energy Storage Systems. Battery Energy Storage Systems offer a wide array of benefits, making them a powerful tool for both personal and large-scale use: **Enhanced Reliability:** By storing energy and supplying it during shortages, BESS improves grid stability and reduces dependency on fossil-fuel-based power generation.