

PRISM ENERGY HONG KONG



Prism provides in-house one-stop services of company incorporation for both Hong Kong and other offshore jurisdictions, accounting services, auditing, tax filing and payroll services. Prism has more than two decades of experience in serving expatriates moving to Hong Kong. Bringing exceptional and satisfactory client service is not an easy task in today's complex and ???



Prism provides in-house one-stop services of company incorporation for both Hong Kong and other offshore jurisdictions, accounting services, auditing, tax filing and payroll services. Prism has more than two decades of experience in ???



Energy studies on 20 existing common commercial buildings were reported earlier [5]. An initial analysis revealed that some correlations between the building envelope heat gain and the electrical energy use for MVAC systems might be worked out using the Princeton Scorekeeping Method (PRISM) [6], [7], [8] and a four-parameter change-point model [9].



PRISM SOLUTIONS TRADING LIMITED was incorporated on 23-FEB-2023 as a Private company limited by shares registered in Hong Kong. The date of annual examination for this private company limited is between Feb 23 and Apr 06 upon the anniversary of incorporation. The company's status is listed as "Live" now.



The energy performances of 20 commercial buildings, covering the common types found in Hong Kong, have been studied. The monthly electricity billing data as well as the results from computer modeling were analyzed. Energy signatures for the commercial buildings were found by a method similar to PRISM.

PRISM ENERGY HONG KONG



- T?n t?>>? ch?>>(C)c th?>>?c hi?>>?n giao d?>>?ch: PRISM ENERGY INTERNATIONAL HONG KONG LIMITED - M? ch?>>(C)ng kho?n: PCG - S?>>? IAE??>>?ng c?>>? phi???u n???m gi?>>? trAE??>>?c khi tr?>>? th?nh c?>>? ???ng l?>>?n: 0 CP (t?>>? l?>>? 0%) - S?>>? IAE??>>?ng c?>>? phi???u ??? mua: 943,500 CP



, Prism ??? „???????



PRISM TECHNOLOGIES LIMITED was incorporated on 30-NOV-2007 as a Private company limited by shares registered in Hong Kong. The date of annual examination for this private company limited is between Nov 30 and Jan 11 upon the anniversary of incorporation. PRISM ENERGY, INC. PRISM HYPNOTHERAPY, L.L.C. Advertisement Companies Name Start With



PCG: PRISM ENERGY INTERNATIONAL HONG KONG LIMITED kh?ng c?n l? c?>>? ???ng l?>>?n - T?n t?>>? ch?>>(C)c th?>>?c hi?>>?n giao d?>>?ch: PRISM ENERGY INTERNATIONAL HONG KONG LIMITED- M? ch?>>(C)ng kho?n: PCG - S?>>? IAE??>>?ng c?>>? phi???u n???m gi?>>? trAE??>>?c khi th?>>?c hi?>>?n giao d?>>?ch: 943,500 CP (t?>>? l?>>? 5%)



Under the laws of Hong Kong, Prism CPA Limited is required to conduct its annual Examination on the anniversary date of incorporation of the company so as to operate legally. Its annual dates are as follows? 1/4 ? Prism Energy International Hong Kong Limited; PRISM ENGINEERING CONSULTING LIMITED; Company Formation. Weiwan Trading Co., ???

PRISM ENERGY HONG KONG



Prism International Development Limited was incorporated on 01-NOV-2021 as a Private company limited by shares registered in Hong Kong. The date of annual examination for this private company limited is between Nov 01 and Dec 13 upon the anniversary of incorporation.



PRISM INDUSTRIES LIMITED is a live company incorporated on 1 December 2017 (Friday) in Hong Kong as a private company limited by shares entity. This private company limited by shares has been operating for 6 years 333 days.



Prism Energy International Hong Kong Limited is a business entity registered in the Hong Kong Special Administrative Region of the People's Republic of China. Incorporated on 01-03-2018, it is a Private company limited by shares and its company registration number is 2660085.



HONG KONG, Mar 5, 2018 - (Media 6828) is pleased to announce that PRISM ENERGY INTERNATIONAL PTE. LTD. ("PRISM"), a subsidiary of SK E& S Co., Ltd. ("SK E& S"), agreed to subscribe for BG Blue Sky's 2-year Convertible Bond in an aggregate principal amount of HK\$180 million with interest of 2% per annum. The Conversion Price is initially HK\$0.



PRISM ENERGY INTERNATIONAL PTE LTD. 72 Anson Road #05-02 Anson House Singapore 079911. Phone. Description. Nature of Business Trading in liquefied natural gas. Categories. Products & Services > LNG - LIQUEFIED NATURAL GAS; x. ???

PRISM ENERGY HONG KONG



Registration No.: 2660085 PRISM ENERGY INTERNATIONAL HONG KONG LIMITED is a live company incorporated on 1 March 2018 (Thursday) in Hong Kong as a private company limited by shares entity. This private company limited by shares has been operating for 6 years 212 days.



Prism Energy International Hong Kong Limited. Prism Energy International Hong Kong Limited was incorporated on 01-MAR-2018. This company is now Live. Their business is recorded as Private company limited by shares. As so far this company has running for 6 year(s) 241 days.



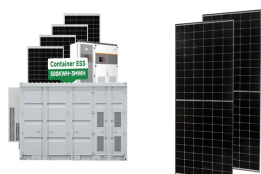
We have probably the busiest ship arrest practice in Hong Kong, with experience of arrests and release of vessels, including negotiating security guarantees and bail bonds, as well as taking action to obtain security for claims in many other jurisdictions via arrest or similar proceedings. Energy & Climate Change Show Energy & Climate



Yes. "Consequential loss" is a term frequently used in contractual exclusion of liability clauses, in many commercial sectors in Hong Kong, from land/property and construction to energy, oil and gas, shipping and other sectors. Example 1 4 General Terms and Conditions of Sea Trader International Ltd (a limited company registered in Hong Kong)



Prism Forge Limited was incorporated on 07-Nov-2024 as a Private company limited by shares registered in Hong Kong. The date of annual examination for this private company limited is between Nov 07 and Dec 19 upon the anniversary of incorporation.



Last Update : 25-11-2024: PRISM TECHNOLOGIES LIMITED is a Hong Kong enterprise registered on 30-NOV-2007. As of Q3-2022, PRISM TECHNOLOGIES LIMITED declared to conduct business in Medical and human health activities (excluding private hospitals, medical groups and

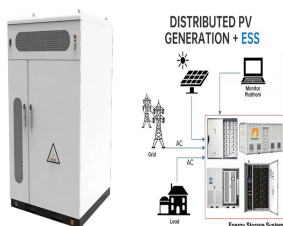
PRISM ENERGY HONG KONG

medical laboratories) category with a full-time headcount of 31

PRISM ENERGY HONG KONG



PRISM GLOBAL LIMITED was incorporated on 03-JAN-2013 as a Private company limited by shares registered in Hong Kong. The date of annual examination for this private company limited is between Jan 03 and Feb 14 upon the anniversary of incorporation. The company's status is listed as "Live" now.



(Incorporated in Hong Kong with limited liability) (Stock code : 00708)
China Evergrande New Energy Vehicle Group Limited Prism Hong Kong and Shanghai Limited (appointed with effect from 16 January 2023)
Certified Public Accountants and Registered PIE ???



Prism is a full-service independent accounting firm, offering comprehensive range of professional services of the highest standard to private and listed companies in Hong Kong, PRC and overseas. We specialise in handling highly complex accounting issues and committed to deliver quality service with tailor-made solution to help your business succeed.



Prism Energy International Hong Kong Limited 20180301???? 1/4
?2660085,,,680???? 1/4 ? ???